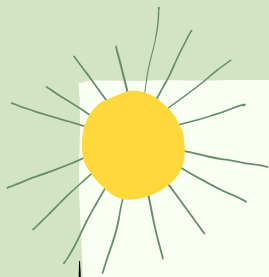


# COTTON

BY KATELYN SHEAN



## IDENTIFY YOUR SELECTED CROP LOCATION OF CROP. SPECIFIC LATITUDES SPECIFIC REGION

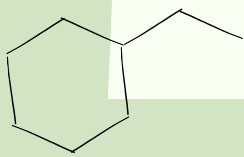
Cotton

Cotton is mostly grown in between latitudes 30N and 30S.

Most of the cotton grown in Australia is grown near rivers. The main cotton farming Australian is grown near the McIntyre River on Queensland border.

## CLIMATE FACTORS, SOIL TYPES

Cotton grows in tropical conditions. It needs to be 21 degrees and 30 degrees for cotton to grow well. The common soil types for cotton are grey, brown and black vertosols. Those 3 soil types have high clay content.



## DOES IT HARM THE ENVIRONMENT, HOWS THIS HAPPENING (HOW FAST) WHAT ARE THE CLIMATE FACTORS.

Cotton farming is harmful to the environment. It can cause soil erosion and degradation, pollution and water contamination. Water contamination is caused by runoffs from pesticides, fertilizers and minerals from the cotton fields, which then contaminates rivers, lakes, wetlands and underground aquifers. In cotton farming they use of fertilisers and pesticides cause pollution. Soil erosion



Cotton is very sensitive to cold weather. The cotton seeds can get damaged if they go through frosts. If it's too hot the cotton root absorbs all of the heat, which can then lead to death.

