

For more information visit ptv.vic.gov.au/frankston or call **1800 800 007**.

If you're deaf, or have a hearing or speech impairment, contact us through the National Relay Service – for more information, visit relayservice.gov.au



For information in other languages:

普通话	9321 5454	廣東話	9321 5441
Italiano	9321 5444	ਪੰਜਾਬੀ	9321 5445
Ελληνικά	9321 5443	हिन्दी	9321 5442
Việt-ngữ	9321 5449	සිංහල	9321 5446
عربي	9321 5440	Español	9321 5447

If your language isn't listed visit ptv.vic.gov.au/languages or call **9209 0147**.

Bikes and pets   

Bicycles, dogs (with the exception of animals identified by an Assistance Animal Pass) and surfboards are not allowed on train replacement buses.

Ticketing

Where possible, you should touch on and off at the beginning and end of your journey. When catching train replacement buses, you can touch on and off at your connecting train station.

Accessibility 

Most train replacement buses will be low-floor models to assist passengers.

If you need help or cannot board a replacement bus, please contact PTV prior to travelling on **1800 800 007** to arrange alternative transport at no cost. Staff will also be on-site during the day at certain locations.

SPA6506

Edithvale, Chelsea and Bonbeach station closures

Edithvale, Chelsea and Bonbeach stations are closed, and the new stations will open in **November 2021**.

During this time, Frankston Line trains are running express through the stations.

From **8.30pm Monday 13 September to last service Sunday 31 October**, buses will replace trains on sections of the Frankston and Stony Point lines.

Ticketing and station facilities

Ticketing and station facilities will be available at Edithvale, Chelsea and Bonbeach stations when the stations open in **November 2021**.

Until then, you should touch on and off at Mordialloc, Aspendale and Carrum stations. New myki card purchases or myki top ups can also be made at Mordialloc, Aspendale and Carrum stations.

To find your nearest retail outlet, go to ptv.vic.gov.au/myki

Pedestrian crossings update

From **early October 2021** pedestrians will be able to cross the Frankston Line where the new road connections are open at:

- Edithvale Road, Edithvale
- Thames Promenade, Chelsea
- Argyle Avenue, Chelsea
- Bondi Road, Bonbeach

As the new road connections listed above open, the following level crossings will be permanently closed to traffic and temporarily closed to pedestrians:

- Lochiel Avenue, Edithvale
- Swanpool Avenue, Chelsea

New pedestrian crossings at these locations will **open in late 2021**.

For more information on changes to pedestrian crossings, visit levelcrossings.vic.gov.au

Free community shuttle bus

During the closure of the pedestrian crossings, a free community shuttle bus is operating to connect locals to train services and local shops.

The shuttle bus will run as a loop service, with Mordialloc-bound stops located on Nepean Highway and Carrum-bound stops located on Station Street.

The shuttle bus will run until pedestrian access opens at the new road connections in **early October**.

Road disruptions and level crossing closures

There will be road and traffic disruptions on Nepean Highway and Station Street in Edithvale, Chelsea and Bonbeach.

Traffic management and signage will be in place to help guide you safely around the area.

For more information, visit levelcrossings.vic.gov.au

Changes to local buses

Changes to local bus services will remain in place until **early 2022**. These include, bus routes 706 and 902 in Edithvale and bus routes 706, 858 and 902 in Chelsea.

See the bus route changes and affected bus stops online at ptv.vic.gov.au/frankston



Buses replace trains on the Frankston and Stony Point lines

Monday 13 September to Sunday 31 October



Authorised by the Victorian Government, 1 Treasury Place, Melbourne.

We're busy removing level crossings

As part of Victoria's Big Build's \$3 billion upgrade of the Frankston Line, we're removing 20 level crossings and building 13 new stations, to improve safety, reduce congestion and allow more trains to run more often.

This year, we're removing five dangerous and congested level crossings from Edithvale to Bonbeach by lowering sections of the Frankston Line into a trench. Three new stations will be built at Edithvale, Chelsea and Bonbeach as part of the project with improved connections between trains and local transport including buses, taxis and bike storage facilities. These changes will make it safer and easier for locals to access public transport, shops and the beach.

For more information, visit levelcrossings.vic.gov.au

Planning your journey

We're here to help you travel during major construction and get you to and from your destination as quickly and easily as possible. We'll continue to keep you updated on works and advise you of the best way to travel.

Plan your journey at ptv.vic.gov.au/frankston or call 1800 800 007.



Find out how these disruptions affect you.

Visit ptv.vic.gov.au/frankston or use your phone's camera or QR reader to scan the code

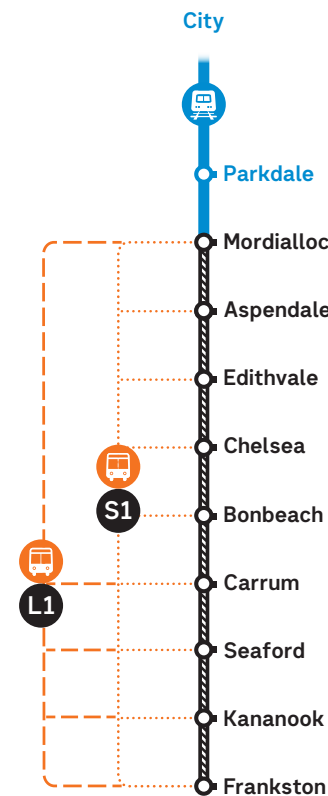


Buses replace trains

Between Mordialloc and Frankston

8.30pm Monday 13 September to last service Wednesday 6 October

Wednesday 13 October to last service Sunday 31 October



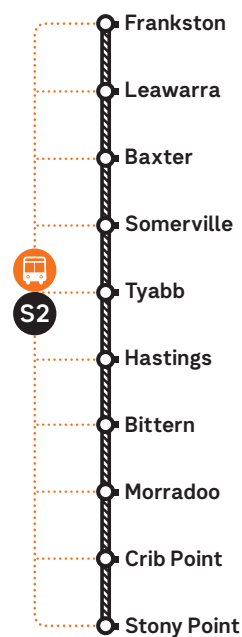
L1 Will only operate from Monday 4 October to Sunday 31 October

Train replacement bus services

S1 S2 Stopping all stations **L1 L2** Limited Express

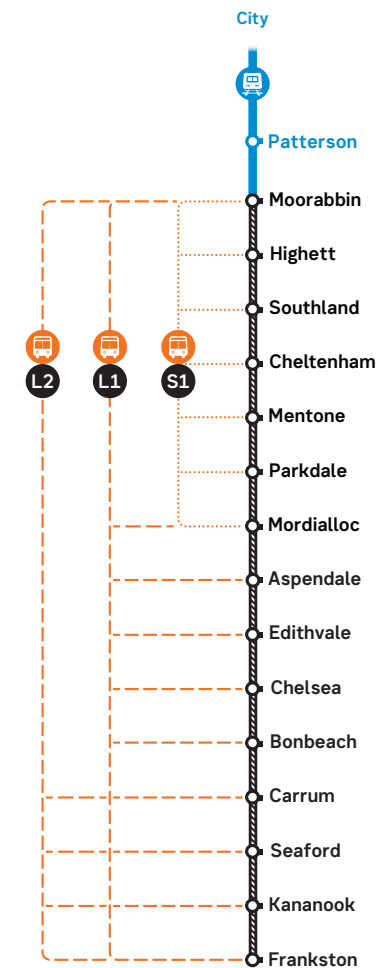
Between Frankston and Stony Point

8.30pm Monday 13 September to last service Sunday 31 October



Between Moorabbin and Frankston

Thursday 7 October to last service Tuesday 12 October



L2 Only operates on weekdays from first service to 9.30am, and from 2.30pm to 6.30pm.

Other rail disruptions

There will also be weekend and night works on other sections of the Frankston and Stony Point lines in September and October.

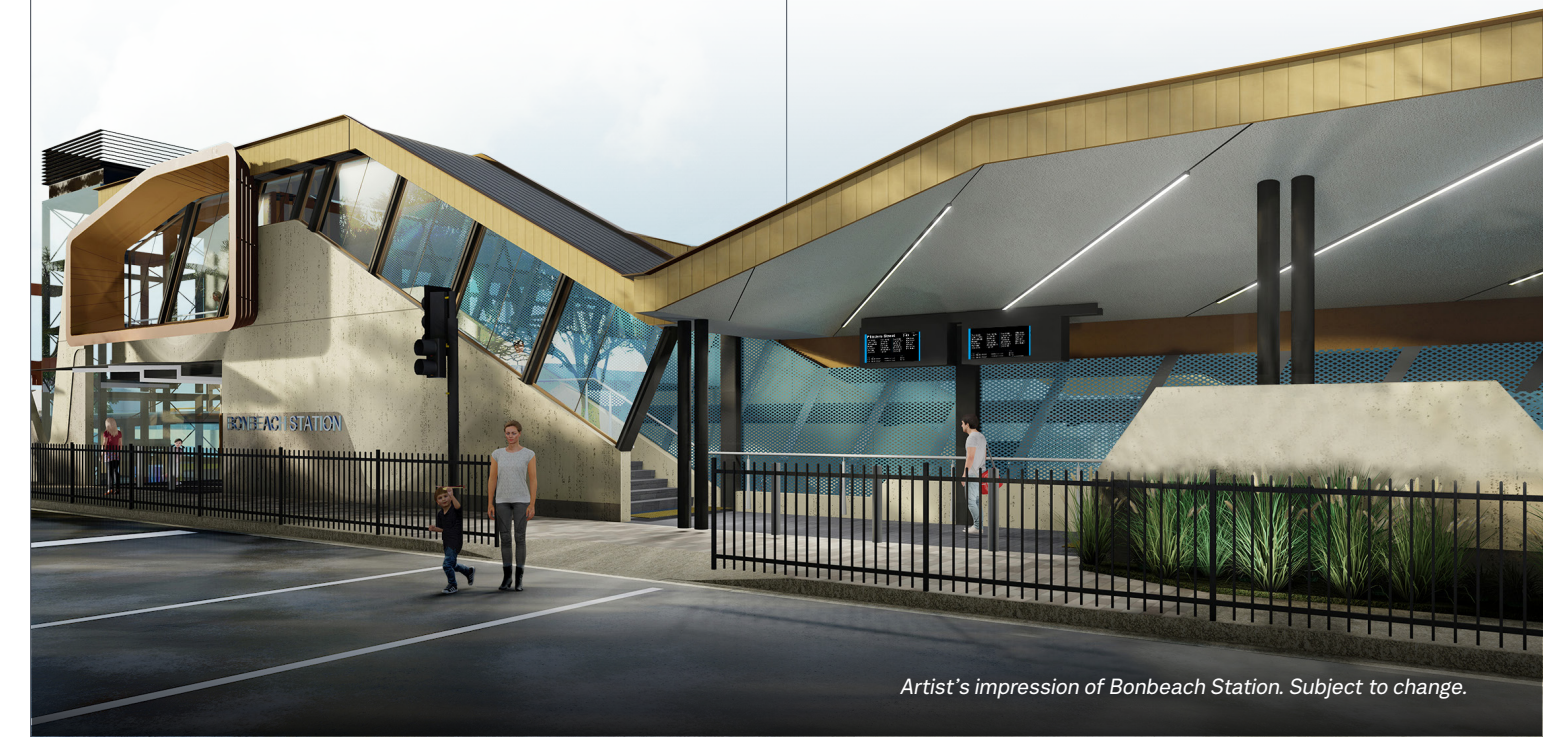
Health and safety

Keeping our workers and the community safe is our priority as we deliver major infrastructure works across Victoria. Victoria's Big Build has implemented strict health and safety policies, including increased cleaning across the public transport network and replacement buses.

Everyone must wear a face mask, unless an exemption applies and passengers are being asked to practise good hygiene and physical distancing. If you are unwell, stay at home.

QR codes have been rolled out in more than 440 key public transport locations and on trains, trams and buses. Please check in every time you see QR codes at stations and stops and while you travel on the public transport network.

For more information on coronavirus, visit coronavirus.vic.gov.au



Artist's impression of Bonbeach Station. Subject to change.