

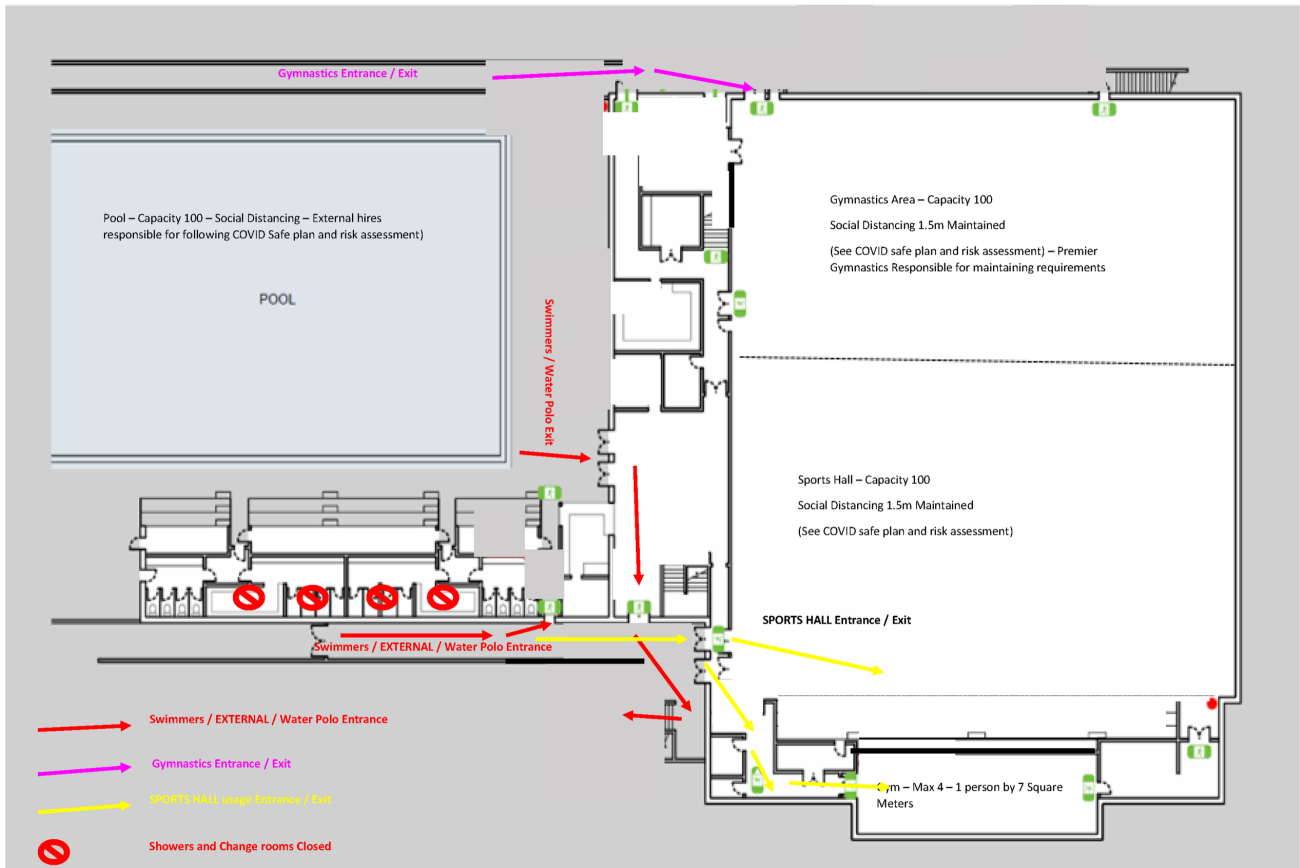


# ST LAURENCE'S COLLEGE

## SOMERVILLE HOUSE SPORTS & AQUATIC CENTRE

### COVID SAFE SITE PLAN

STAGE 3 – Centre Plan



#### PLAYERS AND SPECTATORS

- Players, coaches and officials are permitted to enter the venue. There will be NO spectators permitted in the venue.
- Parents and school buses are to drop-off and pick-up at the designated areas during the specified times.
- Players are not to arrive more than 15 minutes prior to the start time. At the conclusion of the match all players must vacate the venue immediately via the Exit.

#### SITE REGISTRATION

- All players, coaches, officials and first aid officers must register their attendance at the registration desk.

#### HYGIENE

- Utilise the hand sanitiser before, during and after the game. These are located at the many sanitiser stations at the venue.
- Shower at home both pre and post-game.
- Come to the venue dressed in playing uniform. There will be no access to changerooms. Toilet facilities will be available.
- Players are not to bring any unnecessary equipment e.g. basketballs.

- Follow the displayed signage at the venue and social distance at 1.5m always. If you are displaying signs and symptoms of feeling unwell STAY AT HOME and seek appropriate medical advice.
- Those who display symptoms will not be permitted entry.

#### CANTEEN FACILITIES

- No canteen facilities are available.
- All players, coaches and officials are required to bring their own water bottles to the venue. Two full water bottles per player is recommended. Water fountains will be closed.

#### VENUES

- There will be an appointed COVID Officer at each venue.

#### DOWNLOAD THE APP

- We encourage all members of the community to download the COVID Safe App to assist with contact tracing in the event of a contracted case whilst at any AIC sporting event.