



# SCHOOL HOLIDAY ACTIVITIES

NSW SCHOOL HOLIDAY DATES:  
SATURDAY 26 SEPTEMBER TO SUNDAY 11 OCTOBER  
2020



FOR MORE  
INFORMATION  
PLEASE CONTACT  
TOURISM MOREE

Phone: (02) 6757 3350

Email: [info@moreetourism.com.au](mailto:info@moreetourism.com.au)

[www.moreetourism.com.au](http://www.moreetourism.com.au)

**THE TEAM AT TOURISM  
MOREE WISH EVERYONE A  
SAFE AND HAPPY SCHOOL  
HOLIDAYS.**

The logo for Bank Art Museum Moree features a grey circle with blue dots and a solid blue circle to the left of the text.

# BANK ART MUSEUM MOREE

**Address:** 25 Frome Street, Moree

**Phone:** (02) 6757 3320

**Event Name:** Unveiled: Love, Lace and Longing

**Date:** Friday 18th September - Saturday 14th November 2020

**Cost:** Adults \$15, Under 18s Free

**Details:** Bank Art Museum Moree, in collaboration with The Moree Gallery, presents a joint exhibition of new nostalgic paintings by Jo White and a 20-year retrospective of designer Melinda O'Donoghue's couture bridal fashion. Fall in love with our first fashion exhibition at BAMB, featuring a collection of O'Donoghue's couture bridal gowns on display and supported by photographs of the brides from their wedding days. Be drawn back in time with a series of artworks by White responding to, and inspired by, vintage photographs and scenes of courtship and couples in love. All Jo White artworks will be available for sale. Sales open 10am, Friday 18th September at BAMB. View artworks online at our exhibition partner's webpage, The Moree Gallery.

**Event Name:** Art on Holidays: Holiday Workshops

**Date:** Monday 28th September & Tuesday 29th September 2020

**Time:** 9am - 11:30pm

**Cost:** \$15

**Details:** Ages 6-12. Book now for Art On Holidays! Join us for fun, messy and creative art classes these school holidays. Each day will be a different art making activity. To book go to: [www.trybooking.com/BLIDS](http://www.trybooking.com/BLIDS)

**Event Name:** Teens Workshop: Acrylic Painting Class

**Date:** Wednesday 7th October 2020

**Time:** 9am - 12pm

**Cost:** \$ 30 (Creative kids Vouchers can be used). All materials supplied.

Please book online & contact BAMB to pay. To book go to:

<https://www.trybooking.com/BLEUJ>

**Details:** Ages 13-18. Held by professional artist Murray Bird, the workshop will be aimed at year 11 and 12 students or those wanting to enhance their painting skills. Murray will lead you through composition, drawing and acrylic painting.



# CENTACARE NEW ENGLAND NORTH WEST

**Address:** 48 Auburn Street, Moree

**Phone:** (02) 6750 8500

**Event Name:** Mindful Art For Ages 7 - 14

**Date:** Every Monday

**Time:** 10am - 12pm

**Cost:** Free

**Details:** Mindful art is a program which aims to improve the happiness and wellbeing of participants by engaging their creativity and imagination.

Please contact Centacare if you will be attending as they will have a limited amount.

**Event Name:** Mindful Art For Ages 6 - 12

**Date:** Every Thursday

**Time:** 3pm - 4pm

**Cost:** Free

**Details:** Mindful art is a program which aims to improve the happiness and wellbeing of participants by engaging their creativity and imagination.

Please contact Centacare if you will be attending as they will have a limited amount.



# MOREE COMMUNITY LIBRARY

**Address:** 36, Balo Street, Moree

**Phone:** (02) 6757 3374

Moree Community Library is holding a Star Wars Festival from September 28th to October 10th 2020 for the school holidays. On display will be Star Wars movie memorabilia and costumes, and the Library's Star Wars collection items. Activities on offer include a Where's Wookiee hunt and take-home crafts available throughout the festival, and movie screenings on select days. Children must be accompanied by an adult.



## *Join us* **MOVIE SCREENINGS**

- |   |  |
|---|--|
| LEGO Star Wars: Droid Tales (PG)                                    | 10am - Tuesday 29 September and 6 October  |
| Star Wars: The Rise of Skywalker (M)                                | 2pm - Wednesday 30 September and 7 October |
| Solo: A Star Wars Story (M)<br>(Spaces Limited, bookings essential) | 2pm - Thursday 1 October and 8 October     |



Star Wars Display



Take-Home Crafts



Where's Wookiee Hunt





# MOREE FAMILY SUPPORT INC

Address: 233 Balo Street, Moree NSW 2400

Phone: (02) 6752 4536



**Event Name:** Kidz Club

**Date:** Monday 28th September - Friday 9th October 2020

**Time:** 8:30am - 5:30pm

**Cost:** \$40 per day, per child. Child care subsidy available.

The poster features a bright yellow background with radiating lines. At the top left is the 'Moree Family Support Inc.' logo. The word 'KIDZ' is written in large, colorful, block letters (pink, blue, orange, green). Below it, 'CLUB' is written in purple. A white banner with purple text reads '28th Sept - 9th Oct'. Three polaroid-style photos show children engaged in activities: playing cards, growing plants, and holding up cards. Below the photos are three colored boxes labeled 'Play' (yellow), 'Grow' (blue), and 'Fun' (green). At the bottom, text provides pricing, address, and contact information.

Moree Family Support Inc.

# KIDZ CLUB

28th Sept - 9th Oct

Play Grow Fun

Only \$40 per day pp  
Childcare Subsidy Available

233 BALO STREET MOREE

Entolment Forms Available  
Moree Family Support  
21 Auburn Street Moree

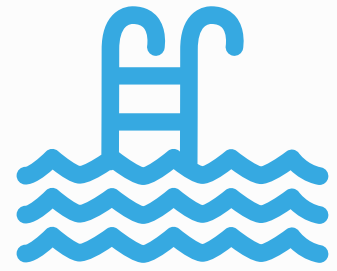
Operating hours  
Monday - Friday  
8:30am - 5:30pm

HURRY UP CALL NOW 02 6752 4536 [www.morfss.org.au](http://www.morfss.org.au)

# MOREE ARTESIAN AQUATIC CENTRE

**Address:** 20 Anne St, Moree NSW 2400

**Phone:** (02) 6752 2272



**Event Name:** MAAC Learn to Swim 5 Day Intensive

**Date:** Monday 28th September - Friday 2nd October 2020

**Time:** 8am - 11am

**Cost:** \$80

**Details:** MAAC Learn to swim 5 days intensive.

Ages 3 to 5/6 year old. Dory & Snapper levels.

Enrolment close 9am Thursday 24th September 2020.

COVID Conditions will apply.



**Moree Artesian Aquatic Centre**

SEPTEMBER 2020

**MAAC  
LEARN TO  
SWIM  
5 DAY  
INTENSIVE**

\$80.00  
MON 28 SEP to FRI 2 OCT  
3 to 5/6 year old  
Dory & Snapper levels

Lessons between  
8 to 11 am

ENROLMENTS CLOSE  
9 am Thursday 24 SEP 2020

COVID Conditions will apply

**COVID STYLE**

# WHERE TO PLAY

**Apex Park:** The play equipment includes a flying fox, spider rings, swings, climbers & a mini rock wall. There is also a double slide. The park also includes a number of covered tables.



**Jellicoe Park:** A great place for a picnic or for a walk. The park has a rose garden, which features a covered pergola area and a variety of trees.



**Moree Skate Park:** It's designed for skate and BMX users and caters for all ability levels. The equipment includes a permanent concrete small bowl with flat banks, corner bowl, ramps & grind rails on a concrete surface.



**Kirkby Park:** "Home of the Big Rocket". The park contains a 14 metre Rocket and a "space" themed command centre playground and the towns iconic Band Rotunda.



# WHERE TO PLAY

**Spilsbury Park :** The play equipment includes a flying fox, swings, a mini rock wall, mini sand pit & two slides. Tables and chairs are provided at the park.



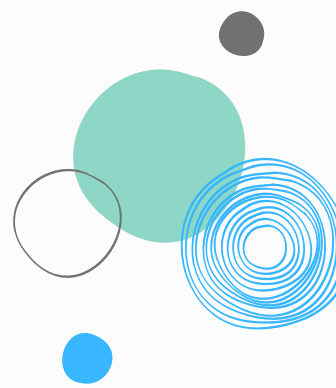
**Mary Brand Park:** Nestled in a gentle curve of the Mehi River, Mary Brand Park is an historically significant spot as it was the location of the second general store in the Moree District. You can reflect on this fascinating history as you rest under the gracious canopies of the century-old Moreton Bay fig trees.



**Anzac Centenary Park:** Located in an area of historical significance and as you take a stroll, you will discover plaques explaining the history of the area including the Victoria Hotel, Moree Artesian Aquatic Centre, Moree Train Station, Moree Station Weigh Bridge and the Tennis Club.



Information supplied by: Moree Plains Shire Council Website  
[www.mpssc.nsw.gov.au](http://www.mpssc.nsw.gov.au)







# PECAN NUT FARM TOUR INFORMATION



## O'DEMPSEY CHARTERS AND LOCAL TOURS

### COVID-19 REQUIREMENTS FOR TOURS TO BE CONDUCTED:

- Limited seating available to allow for social distancing.
- Face mask **MUST** be worn on the bus. Masks can be purchased on the bus for \$2.00 each.
- Correct payment requested until our EFTPOS is up and running.
- Details will be collected for contact tracing.
- Hand sanitiser provided.
- If feeling **UNWELL** please **CANCEL**.

## PECAN NUT FARM TOUR




Featuring Stahmann's Pecan Nut Farm, 'Trawalla' the largest and most productive Pecan Nut plantation in the Southern Hemisphere (access is strictly by guided tour). Tour includes courtesy pickup and return service to your accommodation. Enjoy a light morning tea at Pallamallawa.

**Duration:** 3 hours (approximately)

**Cost:** Adult \$30 per person, Child \$20 per person (under 14).

**To book or enquire please call:**  
Tourism Moree on (02) 6757 3350 or  
O'Dempsey's on 0400 527 445.



# ART TRAILS IN THE MOREE PLAINS



The trails showcase a collaboration of unique Art Galleries & incredible Murals in Moree's CBD & our business precincts.

A copy of the Art Trails pamphlet can be picked up at the Moree Visitor Information Centre or downloaded at [www.moreetourism.com.au](http://www.moreetourism.com.au)

# SELF - GUIDED MOREE HERITAGE WALK



## SELF GUIDED MOREE HERITAGE WALK



Tourism Moree  
67 Alice Street, Moree  
P: (02) 6757 3350  
[www.moreetourism.com.au](http://www.moreetourism.com.au)

Moree's self-guided Heritage Walk is an easy walk highlighting many historical buildings for you to enjoy.

A copy of the Self-Guided Moree Heritage Walk pamphlet can be picked up at the Moree Visitor Information Centre or downloaded at [www.moreetourism.com.au](http://www.moreetourism.com.au)



# SELF - GUIDED DRIVES



Spot some magnificent wild life



Waa Gorge - Walking Track

## SELF-GUIDED DRIVES



Rocky Creek Glacial Area



Experience a Sunset in the Moree Plains

### CHECKLIST PRIOR TO DEPARTING:

- \* Please stick to the routes specified & do not enter any private properties.
- \* Check [www.nationalparks.nsw.gov.au](http://www.nationalparks.nsw.gov.au) for local Alerts before embarking.
- \* We highly recommend enquiring about road conditions or updates before setting off on any drive—as some roads are dry weather access only.
- \* There is limited mobile reception on a number of these tours.
- \* Pack plenty of water, sun protection & insect repellent.

Our staff can provide you with the most recent updates received from appropriate authorities, and have no control or responsibility for the road condition changes or inaccurate information that's been provided to Tourism Moree.



Tourism Moree | Ph: (02) 6757 3350 | 67 Alice Street, Moree | [www.moreetourism.com.au](http://www.moreetourism.com.au)

Explore the Moree Plains region on a self-guided driving tour.

Many spots feature beautiful natural sites and picnic spots.

This booklet which can be picked up at the Moree Visitor Information Centre or downloaded at [www.moreetourism.com.au](http://www.moreetourism.com.au), features a Farming Land Drive through Pallamallawa, Terry Hie Hie Aboriginal Area, Waa Gorge Picnic Area, Rocky Creek Glacial Area, Cranky Rock, Boomi and Mungindi.

# MOREE ARTESIAN AQUATIC CENTRE



## OUR NEW USUAL....

\* FROM MONDAY SEPTEMBER 7, 2020

### ARTESIAN WATER ACCESS

#### OUTDOOR POOLS SESSIONS - no bookings

MONDAY TO FRIDAY:

Mornings 6 to 9 am & 9 to 11 am; Evenings 3 to 5 pm & 5 to 7 pm;

SATURDAY & SUNDAY:

8 am to 6 pm with two hour sessions (8-10, 10-12, 12-2, 2-4 & 4-6)

Currently we have a capacity of 40, \$8 entry,  
Memberships available, NO Concessions, NO bookings.

Please note that the Waterslide and Kids Waterpark are not in operation &  
the Olympic Pool has been decommissioned for repairs

#### WELLNESS RETREAT - online bookings available

Mon - Fri 6 to 11 am & 3 to 7 pm Sat & Sun 8 am to 6 pm

Max of 15 people, \$10 hour session, 16 years & over only, walk-ins welcome  
online bookings available at [www.trybooking.com/BKTUJ](http://www.trybooking.com/BKTUJ).

### GYM ACCESS

#### GYM AVAILABLE - 7 days

Mon - Fri 6 to 11 am & 3 to 7 pm Sat & Sun 8 am to 6 pm

Currently we have a capacity of 48, \$5 casual visit, Memberships available.



MOREE ARTESIAN AQUATIC CENTRE  
02 6752 2272  
[WWW.MAACLTD.COM](http://WWW.MAACLTD.COM)

WELLNESS BOOKINGS



<https://www.trybooking.com/BKTUJ>

# BOOMI HOT POOLS

Before visiting Boomi pool patrons should be mindful of the following:

- Boomi Pool will be open for public use from Monday 29th June 2020 operating under normal winter hours of 9am - 12pm & 2pm - 5pm, 7 days a week.
- All patrons must register their attendance upon entry leaving their name, contact details and phone number for contact tracing.
- A maximum of 16 people can access the facility at any one time.
- 6 people only may use the hot pool at any time.
- Change rooms and toilet facilities will be open HOWEVER patrons are encouraged to shower and change prior to arrival.
- Entry is \$5 - adult and \$4 - concession.
- There will be increased cleaning inline with Covid-19 standards.
- We will introduce/trial a booking schedule to allow folk the best available pool time.
- Patrons are reminded to maintain social distancing measures at all times.
- At this point in time only the hot pool will be available due to work being carried out on the other pools.



# MUNGINDI HOT POOL

Before visiting the Mungindi pool patrons should be mindful of the following:



- The Mungindi Pool will be open for public use from Monday 29 June 2020 = operating under their usual winter season business hours Monday to Saturday: 7.30 am – 12.00 pm and Sunday: 2.00pm – 5.00pm.
- All patrons must register their attendance upon entry, leaving their name and phone number for contact tracing purposes.
- A maximum of 5 patrons can access the facility at any time.
- Only 2 people may use the hot pool at any time.
- Change rooms and toilet facilities will be open however patrons are encouraged to shower and change at home.
- Entry is \$3.00.
- Patrons are reminded to maintain social distancing measures at all times.



# THINGS TO DO IN THE MOREE PLAINS

- > Rest, Relax & Rejuvenate in the Natural Hot Artesian Water.
- > O'Dempsey's Guided Tours featuring the Pecan Nut Farm Tour (Contact Tourism Moree to see when the next tour is).
- > Self-Guided Motoring tours featuring Waa Gorge, Cranky Rock, Glacial Area, Farming Land Drive, Boomi and Mungindi.
- > Visit BAMB (Bank Art Museum Moree), The Moree Gallery, Yaama Ganu Gallery and The Mehi Art Gallery.
- > Self-Guided Moree Heritage Walk.
- > Visit the Moree Botanical Gardens.
- > Fishing, bird watching, camping & nature walks.
- > Visit the Big Rocket at Kirkby Park.
- > Indulge in some retail therapy.
- > Take in the stunning murals.
- > Perhaps treat yourself to a massage or treatment.
- > A day trip to one of the wonderful Towns & Villages in the Moree Plains Shire
- > Explore the local produce range at the Moree Visitor Information Centre.

