



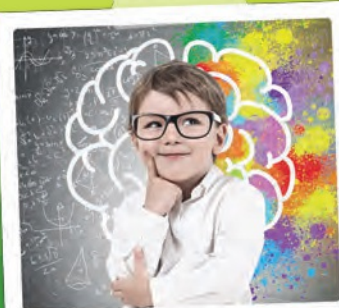
TheirCare
Where Kids love to be!

**Unleash their imagination
these Autumn holidays!**



Autumn Holiday Program

When I Grow Up!



Brain Games



Off to the Movies!



Creative Crafts



TheirCare's
Got Talent

Book Now at www.theircare.com.au

Save up to 85% with the Child Care Subsidy

Pascoe Vale North Primary School

Hours of operation: 7:00 am - 6:00 pm

Call us on: 0476 003 636

Service Address: Kent Rd Derby Street, PASCOE VALE VIC 3044



TheirCare

Where Kids love to be!

Super Excursion



Excursion



Incursion / Special Activity



In House Fun



Galaxy Explorers - Monday 11 April



3.. 2.. 1.. Blast Off! Today we will be taking a trip to explore outer space onboard the TheirCare rocket. While on the trip, we will make blow paint aliens, explore propulsion using hands-on experiments and avoid the meteors (balls) in a game of dodgeball.

Feature Activity: Blow Art

Additional Activities: Blow art, space games, dodgeball, science experiments, plus plenty of time to choose your own adventure.

As low as \$9.81 with the Child care Subsidy.

Full fee \$65.39. Suburb Avg \$12.42.



Glow up - Tuesday 12 April



Today we will be constructing and decorating our own light up lanterns. The fun continues with slime, cloud dough, science experiments, cricket and time to choose your own adventure.

Feature Activity: Lanterns

Additional Activities: Slime, cloud dough, science experiments, cricket, plus plenty of time to choose your own adventure.

As low as \$10.24 with the Child care Subsidy.

Full fee \$68.25. Suburb Avg \$12.97.



Zoo Keeper for a Day - Wednesday 13 April



We're off to the Melbourne Zoo, home to over 320 different species of animals from around Australia and around the world, including tigers, koalas, elephants, snakes, seals, orangutans and more.

Feature Activity: Melbourne Zoo Excursion

Additional Activities: Mini volleyball, music games, splat art, mindfulness activities, plus plenty of time to choose your own adventure.

Please be at the service by 8:30 am. Pick up after 3:00 pm.

As low as \$14.74 with the Child care Subsidy.

Full fee \$98.25. Suburb Avg \$18.67.



Pro Racer - Thursday 14 April



Build then race one another in this skillful, energetic trip down memory lane. First, we will learn to build using tools and materials to make awesome billy carts, then test your driving on the crazy billy cart course.

Feature Activity: Billy Carts Incursion

Additional Activities: Sporting games, scavenger hunt, nature crafts, plus plenty of time to choose your own adventure.

As low as \$11.74 with the Child care Subsidy.

Full fee \$78.25. Suburb Avg \$14.87.



Public Holiday - No Service - Friday 15 April



TheirCare
Where Kids love to be!

Super Excursion



Excursion



Incursion / Special Activity



In House Fun



**PUBLIC
HOLIDAY**

Public Holiday - No Service - Monday 18 April



Lights, Camera, Action - Tuesday 19 April

Today we will explore the technique of stop motion and clay animation as we make our own short movie. You'll even get to show your friends and family at home.

Feature Activity: Clay Animation

Additional Activities: Sporting games, animal craft, messy art and time to choose your own adventure.

As low as \$11.74 with the Child care Subsidy. Full fee \$78.25. Suburb Avg \$14.87.



Making Music - Wednesday 20 April

Get ready to rock with today's awesome music-based activities before showing off your talents in our battle of the bands talent show! We'll make music using upcycled materials, play some fun drama games and cook maple snickerdoodle popcorn.

Feature Activity: Battle of the Bands Talent Show

Additional Activities: Upcycled musical instruments, drama games, maple snickerdoodle popcorn, beading, plus plenty of time to choose your own adventure.

As low as \$9.81 with the Child care Subsidy. Full fee \$65.39. Suburb Avg \$12.42.



Fluffy Friends - Thursday 21 April

The best things in life are fluffy! Today we will make our own plush toys or pillows to take home. The fun continues with a picnic outside, team games, challenges and mindfulness drawing.

Feature Activity: Pillow or Toy Designs

Additional Activities: Team games, challenges, mindfulness drawing, lego, plus plenty of time to choose your own adventure.

As low as \$10.24 with the Child care Subsidy. Full fee \$68.25. Suburb Avg \$12.97.



The Bad Guys - Friday 22 April

Based on the hugely popular book series by Aaron Blabey, The Bad Guys follows five infamous friends who attempt their most challenging job yet?..going good. Nobody has ever failed so hard at trying to be good as The Bad Guys. Popcorn & Drink Included.

Feature Activity: Movie: The Bad Guys

Additional Activities: Rally games, origami, drawing, plus plenty of time to choose your own adventure.

Please be at the service by 8:30 am. Pick up after 3:00 pm.

As low as \$14.74 with the Child care Subsidy. Full fee \$98.25. Suburb Avg \$18.67.

Using the service



What to Bring

✓ Food and Drink

- Breakfast and an afternoon snack will be provided.
- Families need to supply a healthy morning tea, lunch (such as wholemeal sandwiches and dips) and a drink bottle just like you would pack for on a normal school day.
- For lunchbox ideas visit <http://heas.health.vic.gov.au/schools/healthy-lunchboxes>.
- Due to the risk of anaphylaxis items containing nuts should not be included in the lunchbox.
- Please do not include items which need to be reheated.
- Water will be available all day to refill drink bottles.

✓ Medical Management Plan & Medication

All children who has been diagnosed with a medical condition, including all allergies, food/chemical intolerances, anaphylaxis, asthma, epilepsy or any other medical condition which may effect the child must have a completed medical management plan with a colour photo in order to attend.

It is a legal requirement under the Education & Care National Regulations and the Term & Conditions for bookings that these are provided, along with any medication listed on the plans where required.

These can usually be sourced from your doctor or can be found in the FAQs at www.theircare.com.au/holidayprograms.

In the interests of the child's safety, care may be refused on the day should the appropriate documentation or medication not be supplied or is incomplete.

If you have any questions, please feel free to speak with one of our friendly educators at the service or call us on 1300 072 410.

✓ Appropriate Clothing & Hats

- Clothing suitable for an active day, including closed toe shoes and a jacket if it is predicted to be wet or cold.
- A Sun Smart hat similar to the one worn at school is required. Children who do not bring a hat will be unable to play outside.
- Sunscreen will be provided throughout the day.
- For more information about being Sun Smart visit www.sunsmart.com.au.
- We recommend that all items are labeled with the child's name in case they are left behind at the end of the day.

✗ Personal Belongings & Devices

Personal belongings including electronic devices such as phones, iPads, laptops, game consoles, money and valuables should be left at home. If brought to the service, these remain the responsibility of the family. We can not accept responsibility for loss or damage.

Reminders

Keeping Everyone Safe - COVID-19

We have implemented strict infection prevention and control measures to reduce the risk of spreading communicable diseases such as COVID-19. We are guided by the Health & Education Departments in your state, along with advice from professionals.

- Families who are unwell, are showing symptoms of the virus or have been directed to isolate by the health authority are not to attend the service.
- Regular cleaning of all high touch areas.
- Everyone will wash their hands at least every 30 minutes .
- Social distancing of adults, including limits to the number of adults in the service.
- Hand sanitiser is available at the sign in desk for families.
- Modifying activities to promote physical distancing, including using multiple rooms/spaces where available.
- All staff have received additional training in infection control and supporting children through the pandemic.
- VIC - Masks: All adults are to wear masks when picking up or dropping of their children in line with government directions. We follow the same rules as the classroom teachers in relation to educators wearing masks.

Changes to your booking

We understand that your needs may change in the lead up to your attendance at the Holiday Program. Whether you need to add an additional day to keep the kids busy or cancel a day to suit your schedule, we're here for you.

Simply log into your account anytime to make the relevant changes or give us a call on 1300 072 410 between 6:30 am to 6:00 pm on weekdays.

As we plan our programming, suppliers and educators in advance to the day to ensure that the children have lots of fun, all changes to bookings, including new bookings and cancellations made within the 5 days of the booking (120 hours from the start of the session) will incur a \$10.00 charge.

When making additional bookings, the \$10.00 is eligible for the Child Care Subsidy, which means you may only need to pay the gap, depending on your families' circumstances.

Changes to your booking

Activities and times are subject change due to unforeseen circumstances such as severe weather and provider availability. In the rare event that an activity will unable to be run, an alternative activity will be provided where possible. If an alternative can not be sourced, we will automatically update your invoice to reflect the lower fee.