

STUDENT PICK UP GUIDELINES – MAIN CAMPUS AFTER SCHOOL

With our growing enrolments and an ongoing commitment to student safety, some measures are being introduced for the BDISC (Gymnasium) carpark pick up in the afternoon from 3:00pm – 3:30pm to ensure a safer and efficient process.

Students in Years 3-12 can utilise this area from the commencement of the year. Year 2 students transition to this area later in the year and parents/carers will be contacted with more information by the Early Years Coordinator.

- Students need to move promptly to the BDISC carpark for collection at the end of the school day.
- Students will need to wait sensibly under the shelters along the 'Kiss n Drive' slip road.
- If the shelters are too crowded, students may wait, seated on the terraced area near the shelters.
- No students are permitted to wait on the BDISC embankment.
- Secondary students are permitted to wait under the BDISC verandah.
- Students are not permitted to play on the playground, oval, under the shelters, basketball courts or terraced area.
- Students are expected to sit and wait for their parents/carers to collect them.

Parents collecting Primary Students from the classroom and waiting for the carpark to clear are asked to ensure that students are well-supervised and not permitted to play in the areas listed above. We ask these parents ensure any children that are not travelling with them are respectfully reminded of the relevant areas listed above. Please seek assistance from a staff member, if required.

Additional duty staff have been allocated to support the implementation of these new measures. Talking to your child/ren at home to reinforce expectations would be greatly appreciated.

At 3:30pm, as is usual practice, Primary students without Secondary siblings will be escorted to Primary Reception to await collection.

We thank you for your support with these new measures as we work together to ensure a safe and efficient collection of students in the afternoons.

PARKING GUIDELINES

The following arrangements apply for School parking in 2026 and are in place to prioritise the safety of the students, families and staff of the School:

Early Learning Centre

- Please follow directional arrows through the carpark.
- Use paths and crosswalks where possible.
- We encourage the use of the Kiss 'n' Drive for Pre-Primary and Year 1 students. Staff are on duty from 8:00am to 8:30am for drop off and from 3:00pm to 3:30pm for pick up. Any students who have not been collected by this time will be taken to Primary Administration.
- Please notify the class teacher through the School Diary if you wish your child to be brought to Kiss 'n' Drive at the end of the day.
- Please assist with traffic flow in the Kiss 'n' Drive by doing a lap if your child has not yet been brought out.
- Between 3:00pm and 3:20pm is the busiest period of carpark use. During this time, we request your patience and respect for others in our school community. Please do not approach other people in their cars and ask them to do a lap if they are waiting to turn into the Kiss and Drive, as this can often also be congested. There is a queue; however, the traffic moves fairly quickly.
- There are several things that families can do to help alleviate congestion in the afternoons:
 - Do not arrive too early. If you are using Kiss and Drive, we recommend arriving at, or shortly after, 3:00pm. This allows for the majority of our Kindy and Little Wollies families to depart before the Pre-Primary and Year 1 students are released.
 - Little Wollies and Kindergarten parents are asked to leave promptly after collection at 2:45pm if not collecting older siblings.
 - On many occasions, the main congestion starts to ease from 3:15pm. If using the Kiss 'n' Drive, arriving at this time may result in a quicker pick-up. Students are supervised by staff until 3:30pm
- Staff bays are marked.
- Exit via Centre Road, left turn only.
- No parking in the New Spring Church Carpark which is designated Permit Holder Only.

Main carpark behind the BDISC

- The drop off/pick up zone (the Zone) is separate from the carpark and is available for use from 8:00am for drop off and from 3:00pm for pick up. Please only queue in the Zone if your child is ready for collection.
- Those using the Zone need to keep left and travel the perimeter of the carpark.
- Travel up the Zone as far as possible and only use this area for immediate pick up and drop offs. For stays longer than two minutes, please utilise the carpark.
- Please be aware of the pedestrian crossing and approach with caution. The crosswalk is supervised by staff in the morning between 8:00am and 8:30am and in the afternoon between 3:00pm and 3:30pm.

- Those wishing to utilise the carpark need to access via the third row. The exit is via an opening where drivers must give way and then exit as normal.
- Exit via Centre Road, left turn only unless visiting the ELC.

Student Parking

- Student drivers must complete a Student Driver Application Form available on SEQTA
- Student drivers are required to park in the carpark located off Inverness Circle.
- Parents are not permitted to access this carpark or enter school grounds through the Inverness Circle gate.

No parking or Student Drop Off/Pick Up Areas

Staff will be monitoring the following locations:

- In front of the BDISC or anywhere on the slip road.
- Across Lake Road, The New Spring Church driveway/carpark and the bus bays opposite the School.
- In front of the School Administration building or Chapel.
- On road verges where No Standing signs are in place.
- Any of the other car bays, carparks or driveway unless the student is taking part in afterhours activities.

Crosswalks must be used and please do not cross Centre Road between or at the rear of school buses.

We understand that congestion does occur in our carparks and peaks at the beginning of each year. The safety of all members of the school community is paramount. All drivers must exercise caution when on School grounds especially when approaching pedestrian crossings. Pedestrians must use pedestrian crossings. Drivers are also encouraged to have patience whilst giving way to other vehicles (zipper merging).

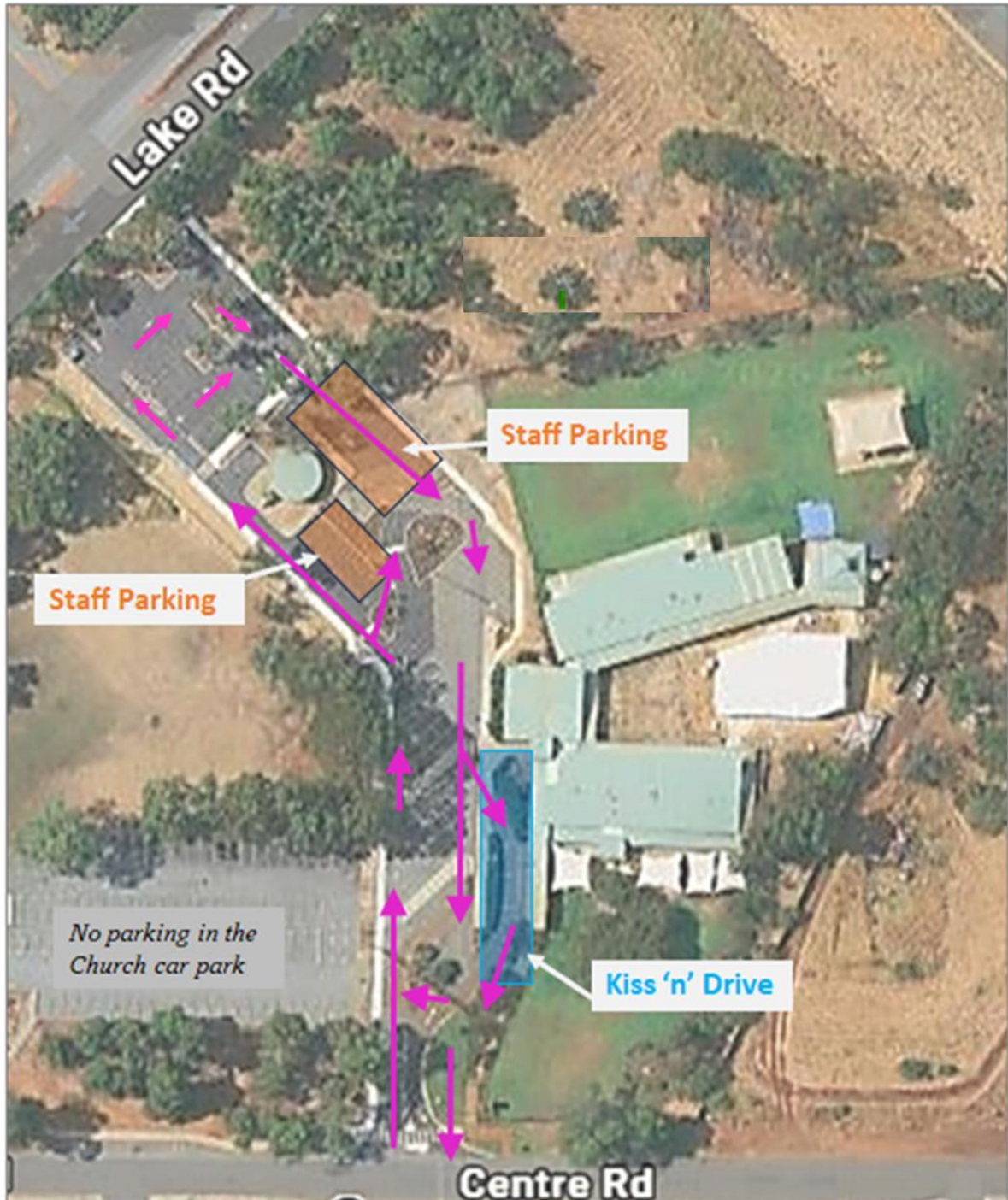
These parking guidelines are subject to change as the School strives for continuous improvement.

If you have any concerns, please do not hesitate to contact a member of staff.

28 January 2026

Enc: ELC and Main Campus Parking Maps

John Wollaston Anglican Community School Early Learning Centre Access and Parking



John Wollaston Anglican Community School

Main Campus Access and Parking

