

**Our Wellbeing Representatives
have helped organise a whole
school science experiment.**

How can we show everyone how important it is to
look after the wellbeing of our environment?

If we filled a pumpkin with a different piece of rubbish from each class and buried it, then dug it up during Science week, what would we find?







We buried our pumpkin on the 30th April and will be digging it up in Science Week on the 20th August.

- What rubbish did your class put into the pumpkin?
- What did your class predict we will find?
- How many days until we dig the pumpkin up, can you work it out?



Class	Item of rubbish	On the 20th August we predict we will find.....
Foundation	crayons	candy & corn
1/2D	cardboard	candy & chocolate
1/2R	plastic vegetable bag	candy & trash
1/2E	tissue	Old rubbish dissolved, treats, pumpkin will be rotten and have exploded
3/4K	clear plastic packaging	Pumpkin will break down. The rubbish will go yucky and the pumpkin will be mouldy.
3/4Y	Glad Wrap	The glad wrap will be the same. The pumpkin will rot and there will be dirt and it will change colour.
4F	Cherry Ripe Wrapper (foil lined sweet wrapper)	Rotten pumpkin with holes from worms. Lots of ants and worms. The rubbish will smell, be dirty but otherwise the same
5/6H	Zooper Dooper wrapper	Mould & dirt but pumpkin will decompose. Bugs will be in it. Items inside will rot.
5/6Y	Plastic	Plastic will turn yellow. Worms and dirt inside decomposing pumpkin.
5/6C	Plastic	Pumpkin will rot and have holes in it. Bugs and dirt inside and the pumpkin will be beginning to decompose.
5/6E	Paper	The paper is biodegradable it will start to break down. It will be moist.

We buried our pumpkin on the 30th April and will be digging it up in Science Week on the 20th August.

- What rubbish did your class put into the pumpkin?
- What did your class predict we will find?
- How many days until we dig the pumpkin up, can you work it out?



We started to dig up our pumpkin on Friday 20th August.

- and dig.....

We found lot's of worms, I wonder why?



We started to dig up our pumpkin on Friday 20th August.

- and dig.....



- until...
- we saw the first piece of rubbish from the Foundation class.
- But, where is the pumpkin?



- Then we saw some pieces of plastic from the 3/4 and 5/6 classes.
- But, where is the pumpkin, tissue and the cardboard?



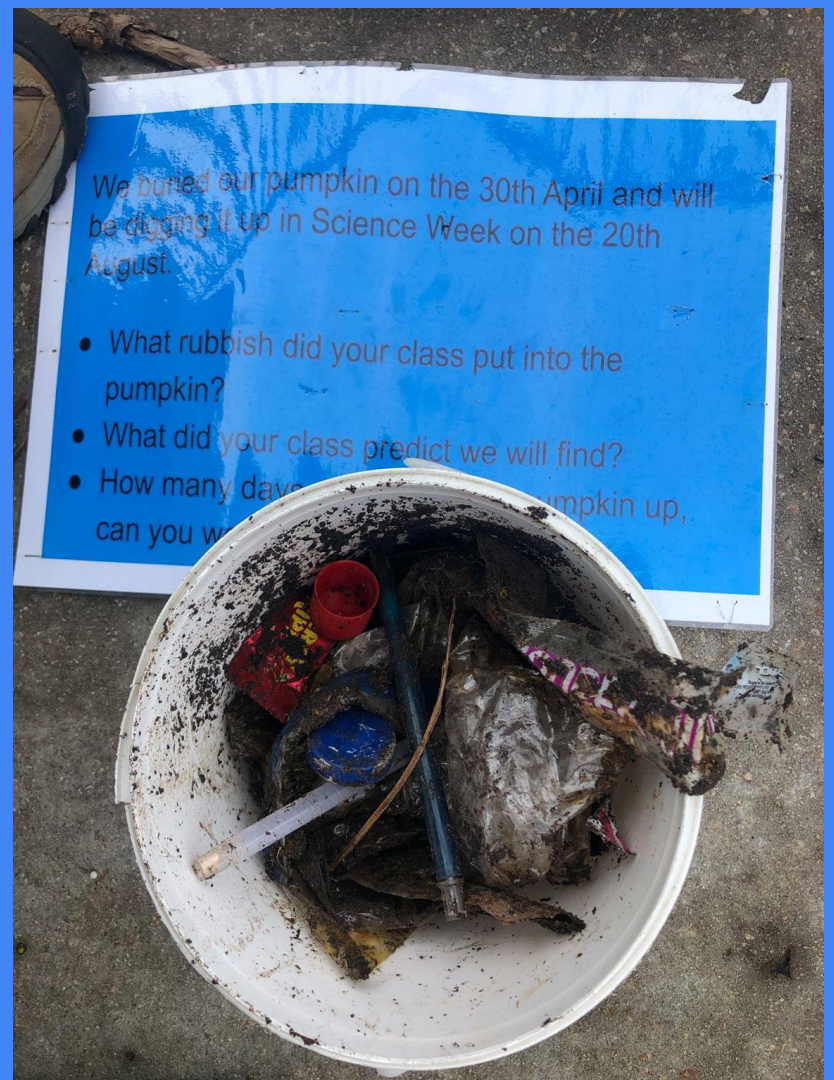
- Then we saw some pieces of plastic from the 3/4 and 5/6 classes.
- But, where is the pumpkin, tissue and the cardboard?
- Do you think you might know the answer?



Look at all of the rubbish that did not decompose (break down) after 112 days.

What does this tell us?

How many days would it take for these items to decompose, let's find out?





The Lifecycle of Plastics



Plastic bag
20 years



Coffee cup
30 years



Plastic straw
200 years



6-pack plastic rings
400 years



Plastic water bottle
450 years



Coffee pod
500 years



Plastic cup
450 years



Disposable diaper
500 years



Plastic toothbrush
500 years

- What does this tell us about the plastics that we throw away every day?
- What can we do about this, to help our planet?
- Have a chat and share your ideas, every change we make can help our planet?

