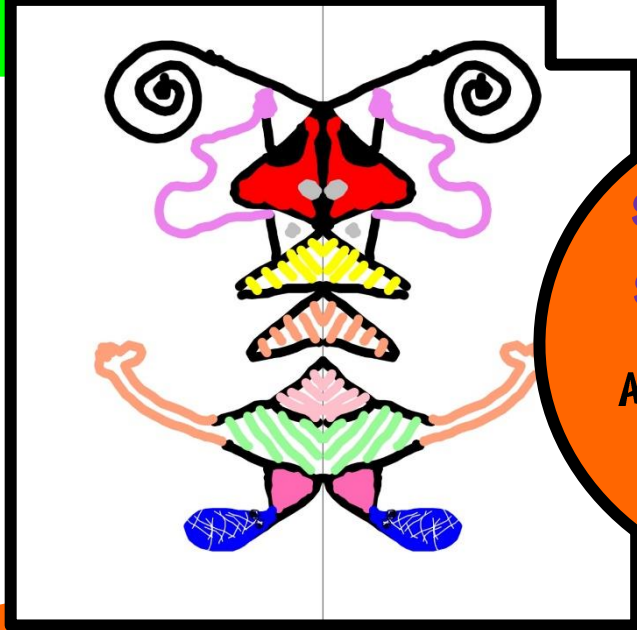
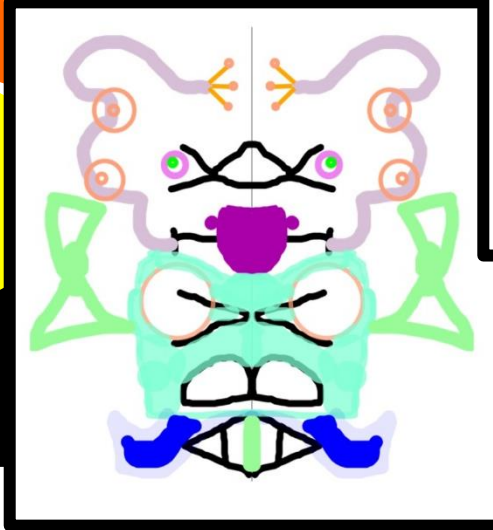
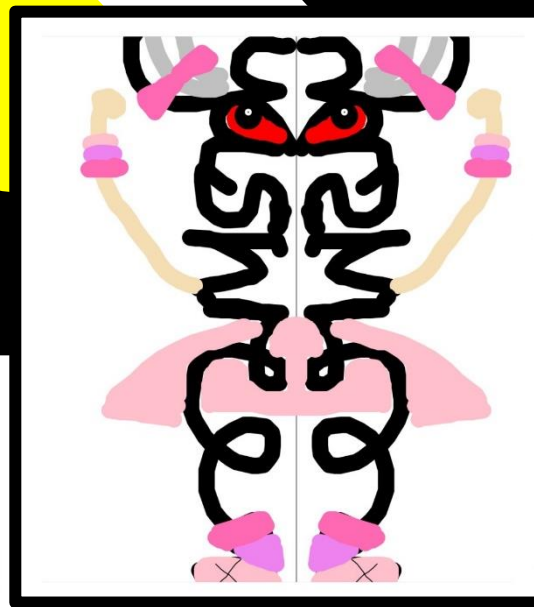
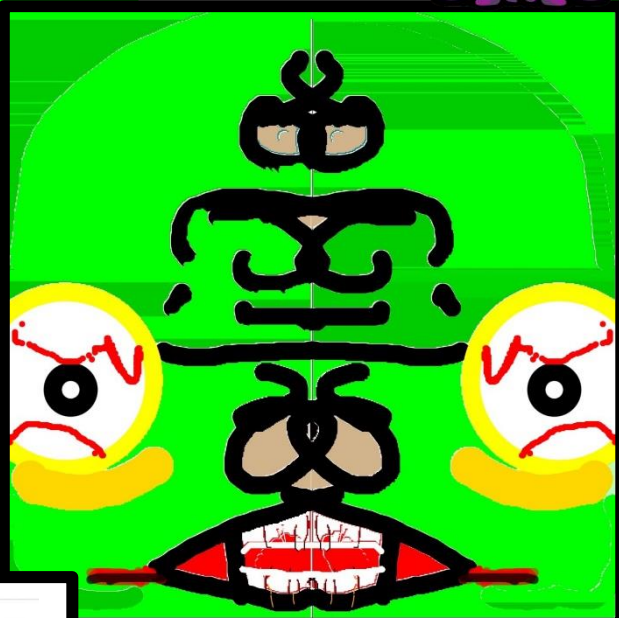
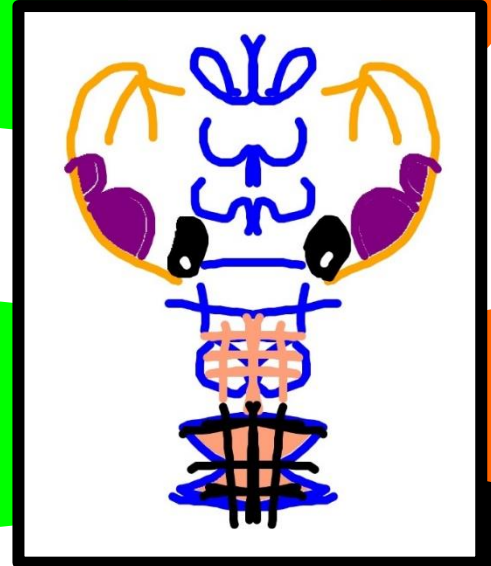


SYMMETRY MONSTERS

During remote learning, Grade 5C explored the idea of Symmetry. Something is symmetrical when it is the same on both sides.

5C explored this by creating **SCARY** Symmetry Monsters using their **NAMES**! Here are some of their creations:



SEE IF YOU CAN FIND THE FOLLOWING STUDENTS MONSTER:

KAMLE	AANYA
ADVIK	BIANCA
AALIYA	
YASHREE	MATISSE

