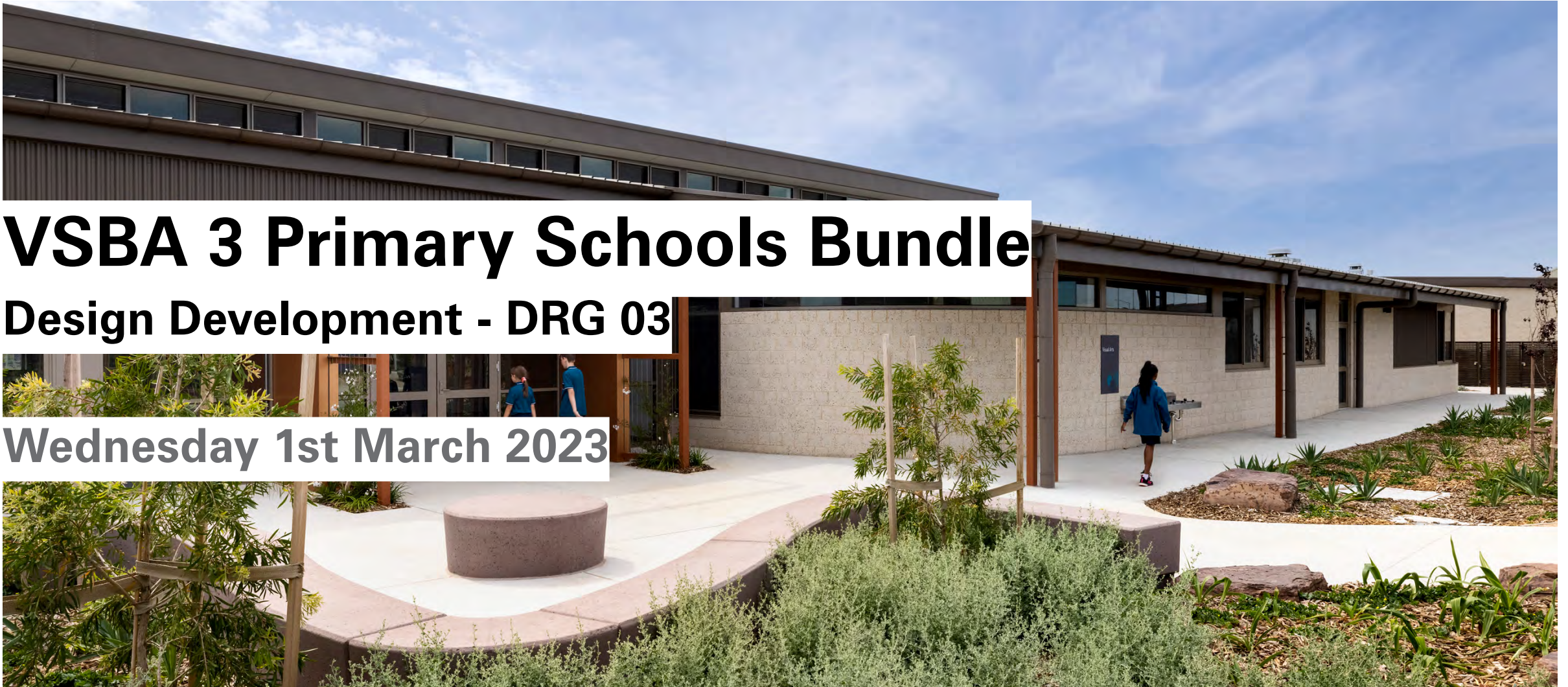




# **VSBA 3 Primary Schools Bundle**

**Design Development - DRG 03**

**Wednesday 1st March 2023**



## Contents

1. Design Development Timeline Summary
2. Project Status
3. AV Provision
4. Storage Arrangement
5. Hearing Inclusion Kit With Juno
6. 3D Views
7. Paths of Travel
8. Specialists Space Design Options
9. Tender Options
10. Next weeks DRG

# 01

## Design Development Timeline Summary

Stages	Weeks													
	1	2	3	4	5	6	7	8	9	10	11	12	13	14
DRG 1 - Design Review + Tender Option / VM Recap		●												
DRG 2 - Develop Floor Plan / 3D's			●											
DRG 3 - Teaching Wall & AV				●										
DRG 4 - Design Principles + Internal / External Materials Palette					●									
DRG 5 - FFE and Loose Furniture						●								
Aboriginal Consultation Workshop	●													
Tender Options + Special Factors Workshop				●										
BQSH Departure Workshop					●									
Safety in Design Workshop						●								
School Approval								●						

## 02

### Project Status

#### Project Update

- Development of teaching wall locations and AV integration
- Hearing Augmentation selection for discussion
- Issue of draft AV layout for Principals to consider
- Review of storage capacity within building
- Review of what VM items can be brought back into project to bring each school back up to budget
- Each VM item brought back in as a tender option to help meet 10% requirement
- Development of additional 3D renders inclusive of Staff work, Seminar room and Withdrawal space.



# 03

## Learning Neighbourhood AV Provision Ground Floor



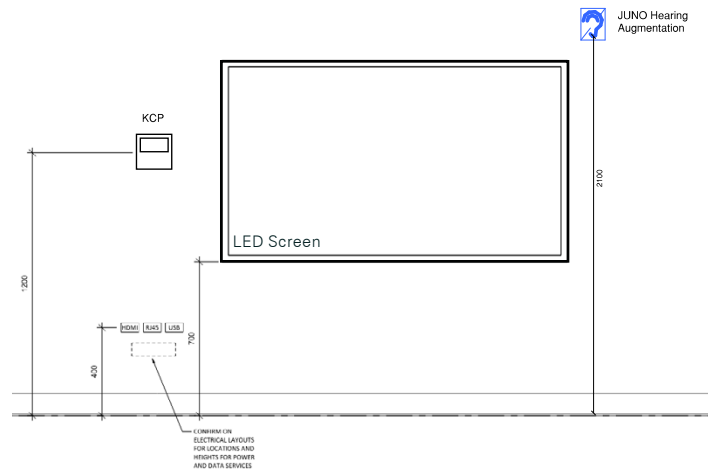
# 03

## Learning Neighbourhood AV Provision First Floor



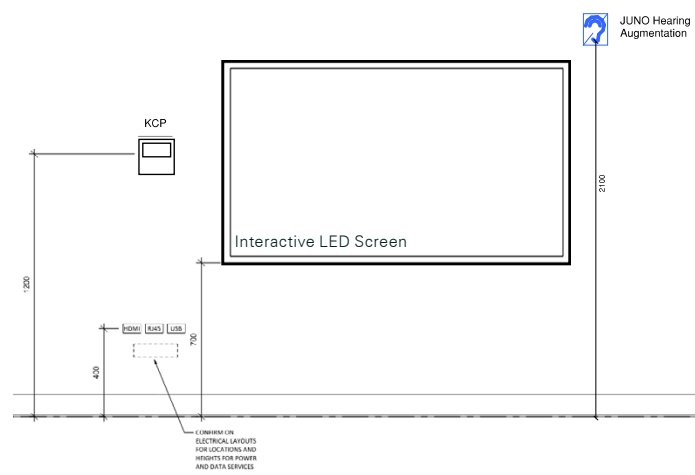
# 03

## Learning Neighbourhood AV Provision



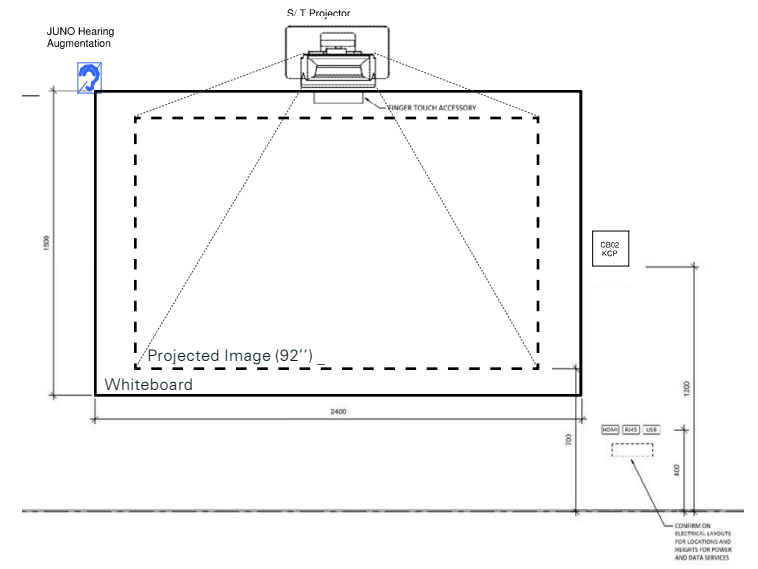
**Option 1**

LED Screen as per current AV setup



**Option 2**

Interactive LED Screen

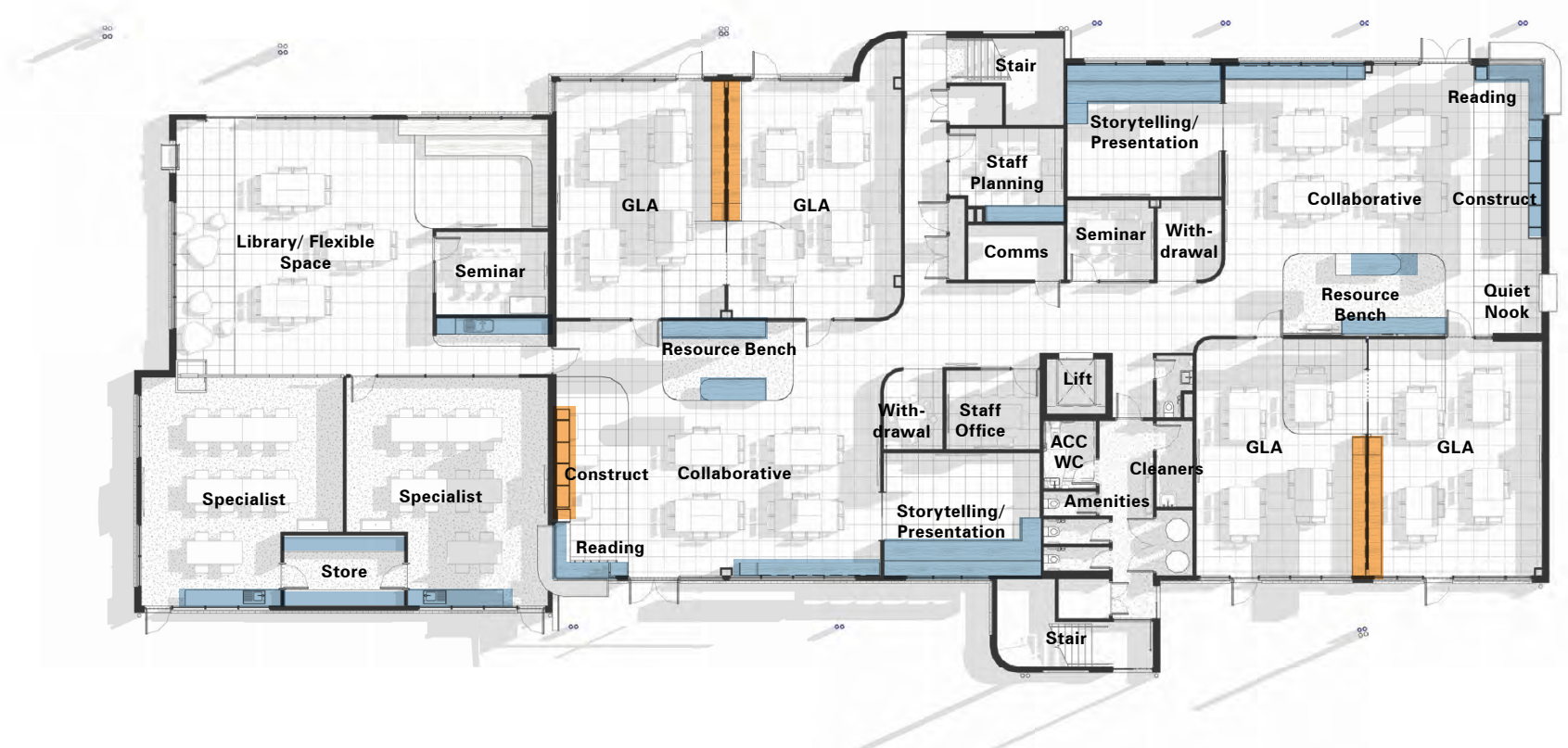


**Option 3**

Short Throw Projector onto Whiteboard

# 04

## Learning Neighbourhood Storage Arrangement Ground Floor

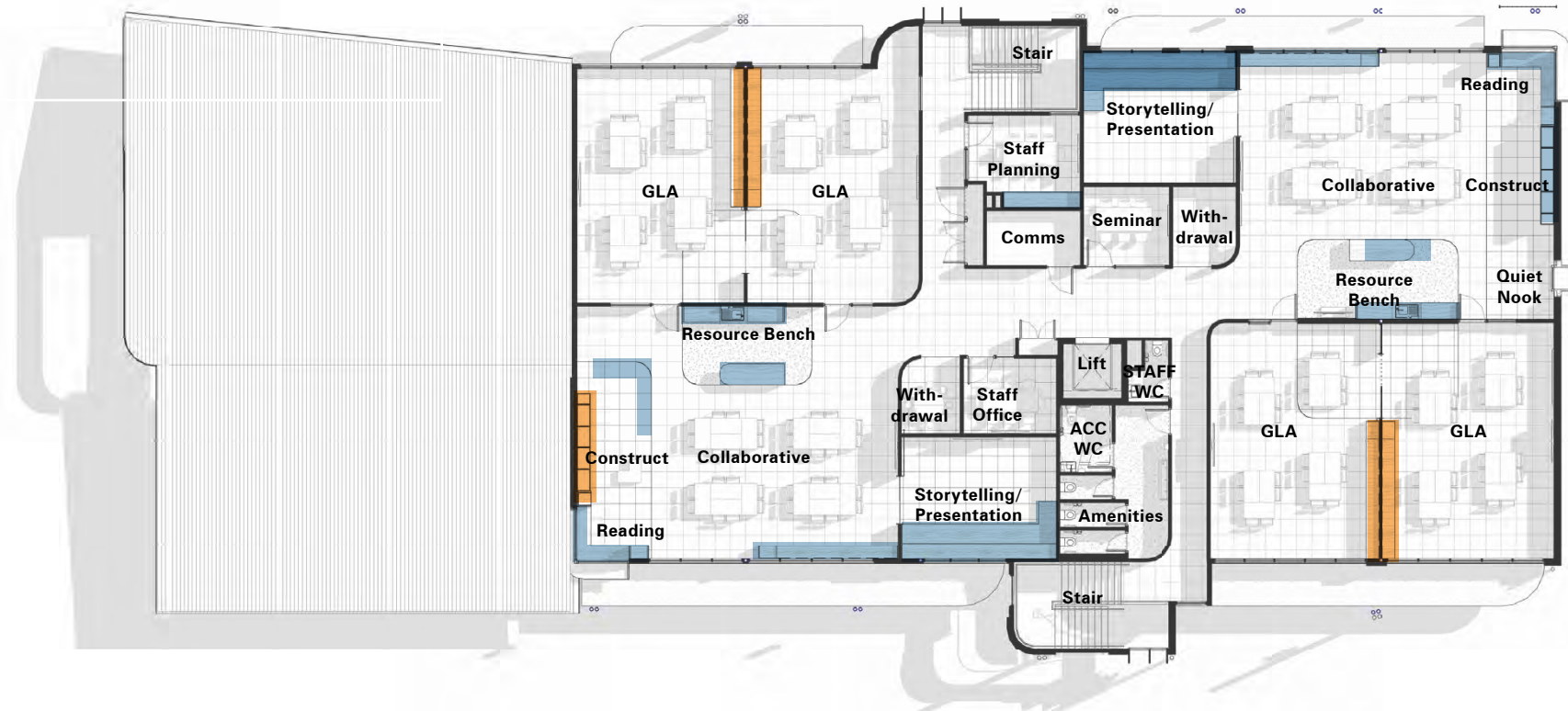


- Fixed Storage
- Mobile Storage



# 04

## Learning Neighbourhood Storage Arrangement First Floor



- Fixed Storage
- Mobile Storage

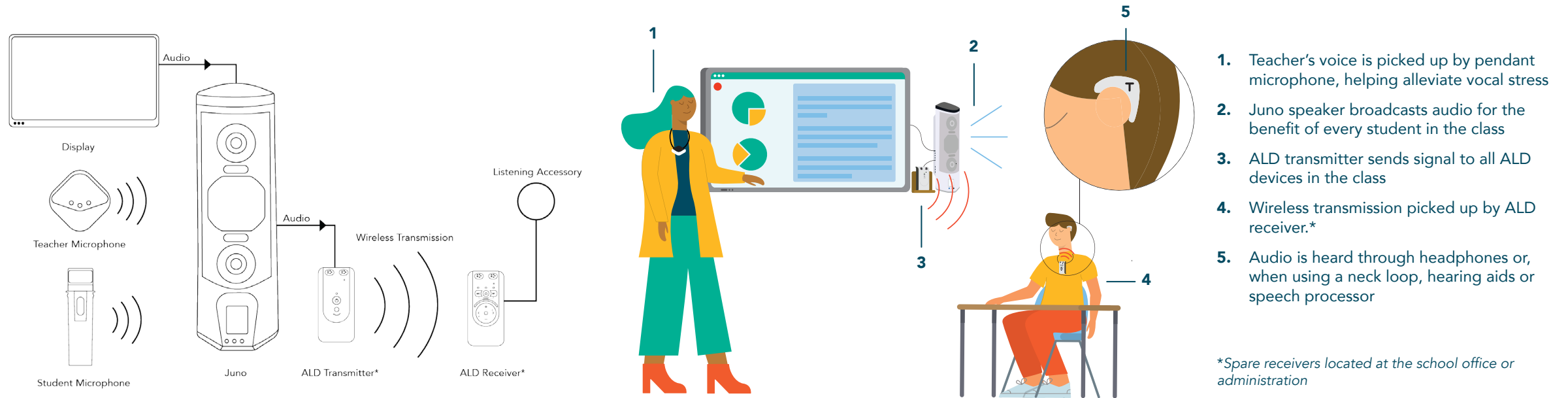
# 04

## AV Procurement

- Contractor as part of scope of work will install the AV Infrastructure. School to receive grant from VSBA for AV equipment.
- Group 2 - Items supplied by the Principal and installed by the contractor
- Group 3 - Items supplied by the Principal and installed by the Principal
- Schools to advise which AV equipment items to fall in Group 2 or 3

## 05

## Hearing Inclusion Kit with Juno



\*FrontRow recommends Bellman audio devices. However, other assistive listening devices are compatible.

**Figure 1.** Technical drawing showing how the Hearing Inclusion Kit works with Juno

**Figure 2.** Illustration to demonstrate how the Hearing Inclusion Kit works in a classroom with Juno

\*Spare receivers located at the school office or administration

# 06

## Seminar



# 06

## Staff Work



# 06

## Withdrawal



# 07

## Paths of Travel



# 07

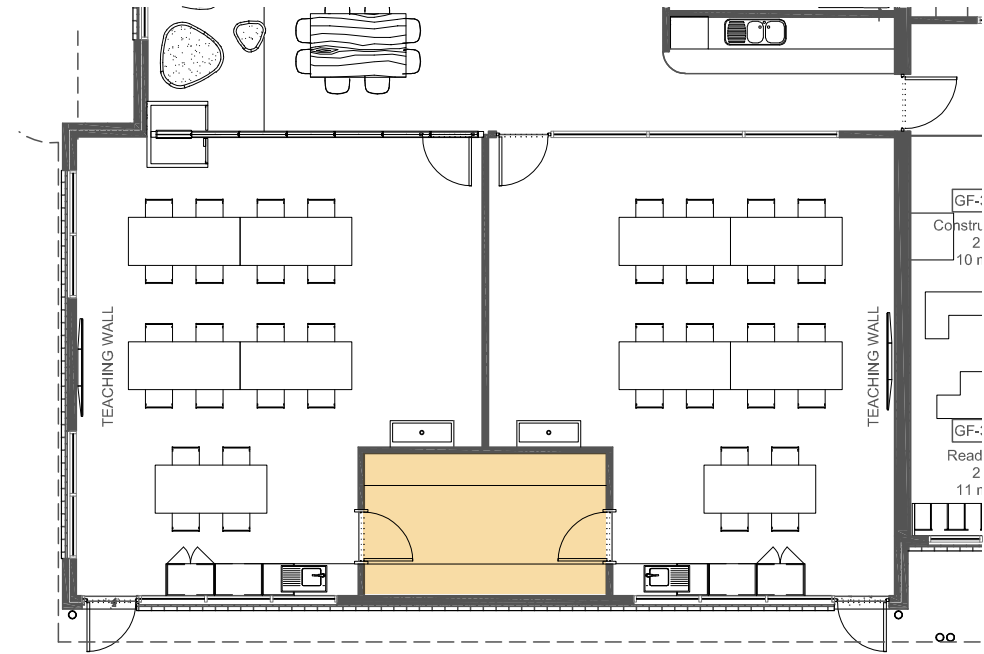
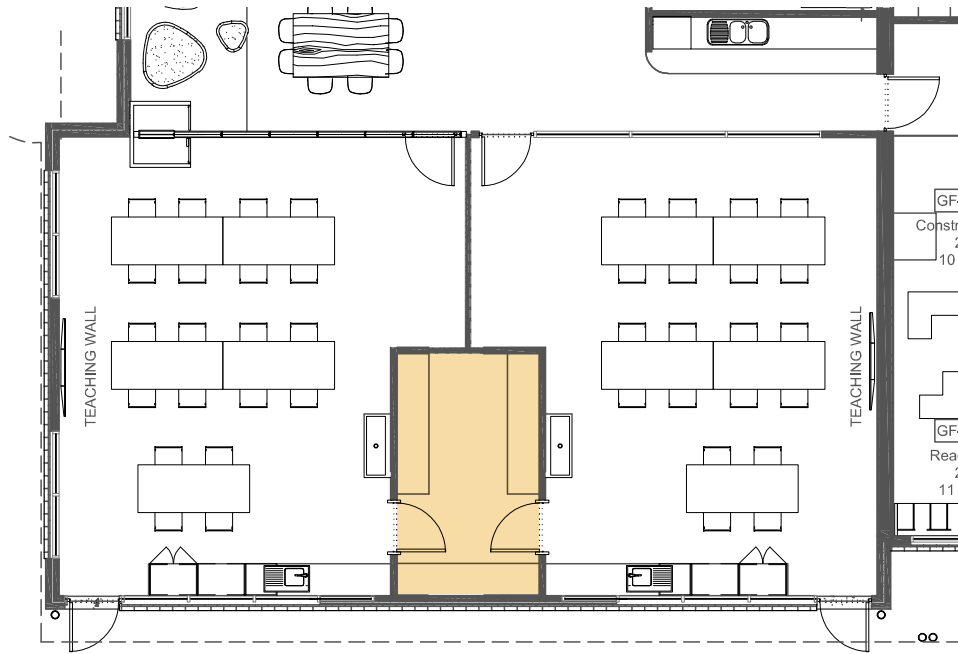
## Paths of Travel





# 08

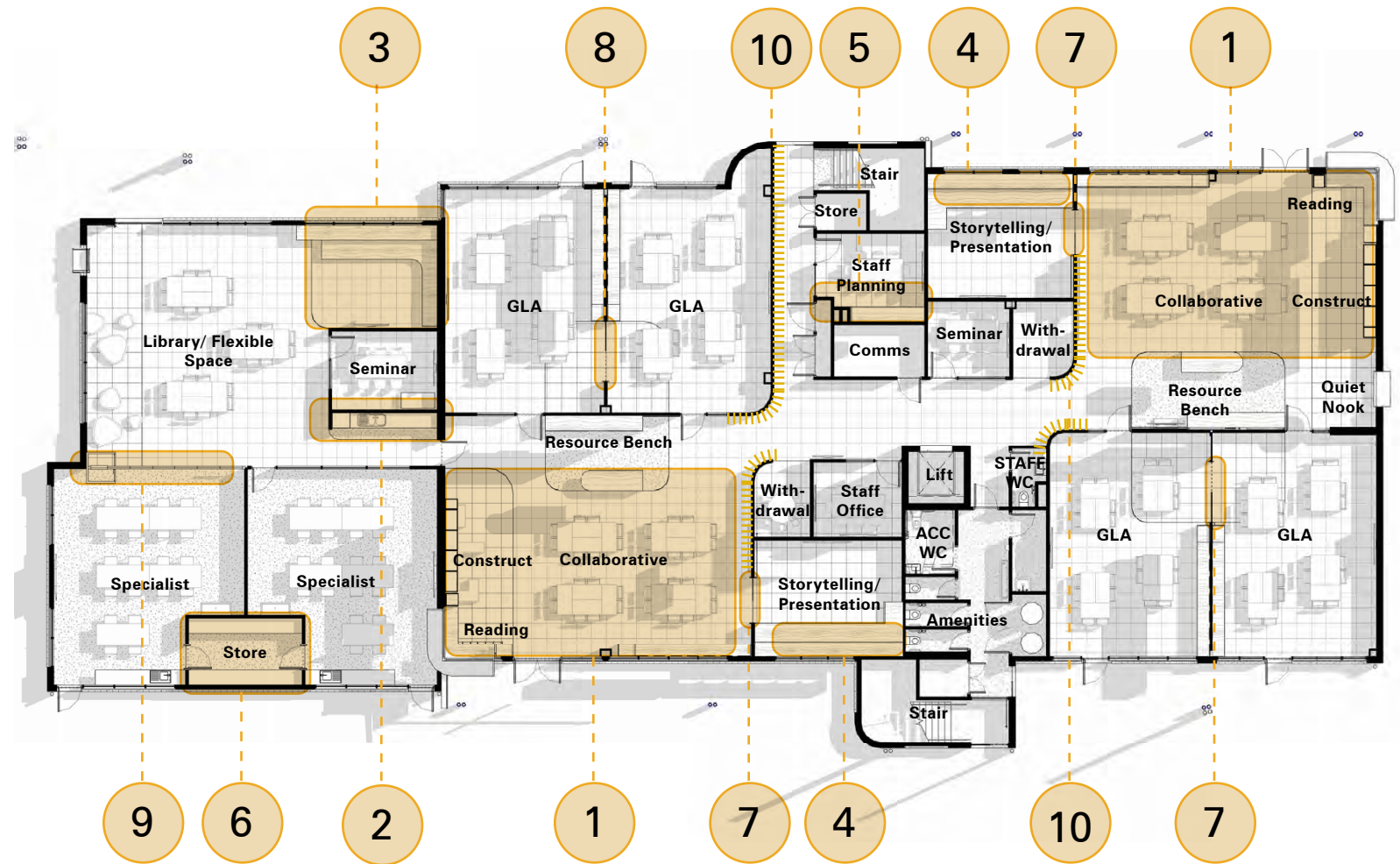
## Specilist Space Design Options



## 09

## Tender Options

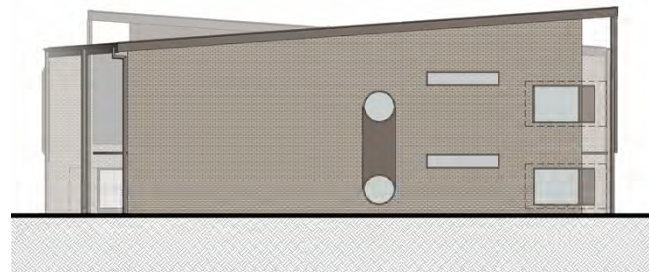
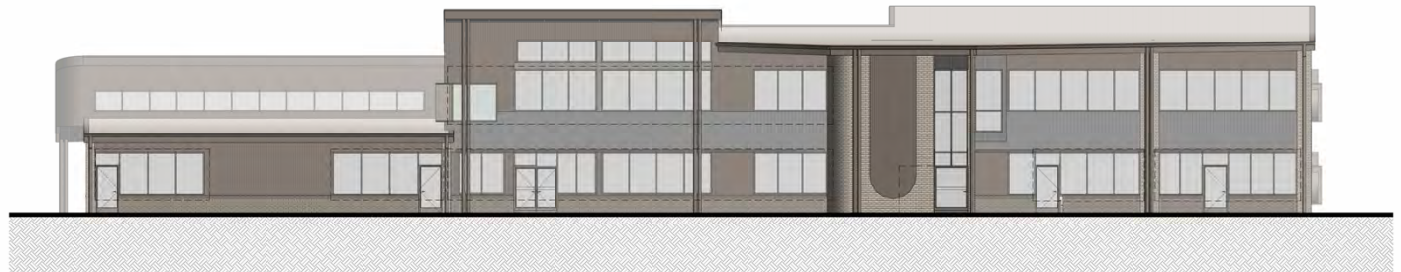
1. Supply and Install Joinery to Construction and reading area in Collaborative space
2. Supply and Install kitchenette to library space
3. Supply and Install tiered seating to library
4. Supply and Install tiered seating to 4 x presentation/storytelling spaces
5. Supply and install joinery to staff work.
6. Supply and install joinery to Specialist Store.
7. Supply and install Glazed cavity slider into Presentation space (4No. In total)
8. Supply and install Glazed cavity slider between classrooms as documented.
9. Supply and install Operable wall as shown on drawings
10. Supply and install feature wall finishes (Eco panel pinboard) as shown in architectural documentation with base scheme as pinboard only in selected paint finish



# 09

## Tender Options

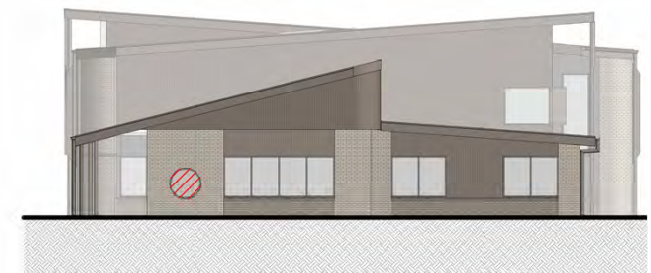
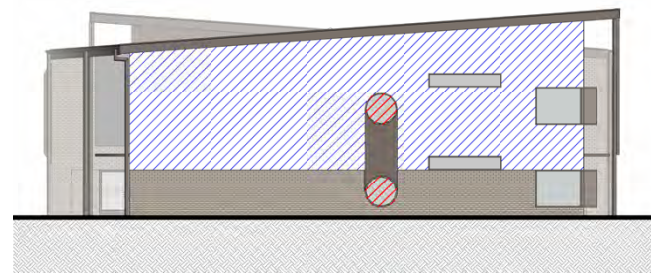
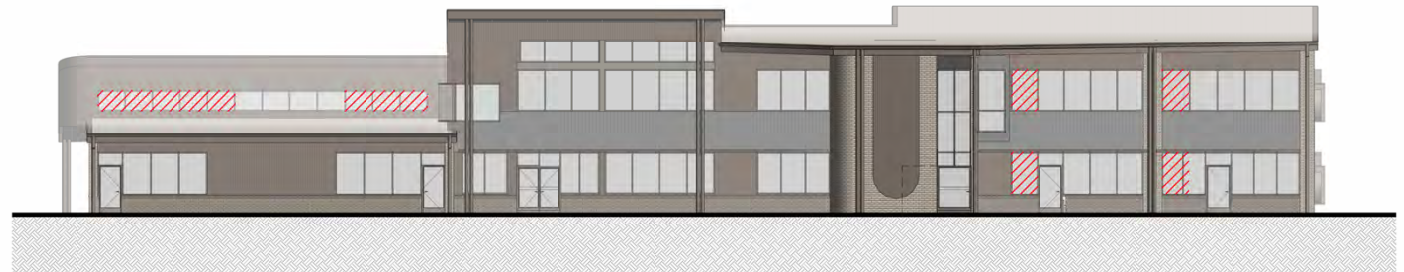
1. Supply and install 100% brickwork as documented with base scheme providing metal cladding in lieu of 30% of brickwork.
2. Supply and install 100% Honed brickwork as documented as specified with base scheme as 100% shotblasted brickwork as alternate specification.
3. Supply and install 3 x Circular Windows as per documentation with base scheme as brickwork only.
4. Supply and install glazing as documented with base scheme reduced to NCC requirements only.
5. Supply and install sunscreen shelves to ground floor level as documented with base scheme providing internal blinds only



# 09

## Base Scheme

1. Supply and install 100% brickwork as documented with base scheme providing metal cladding in lieu of 30% of brickwork.
2. Supply and install 100% Honed brickwork as documented as specified with base scheme as 100% shotblasted brickwork as alternate specification.
3. Supply and install 3 x Circular Windows as per documentation with base scheme as brickwork only.
4. Supply and install glazing as documented with base scheme reduced to NCC requirements only.
5. Supply and install sunscreen shelves to ground floor level as documented with base scheme providing internal blinds only



# 09

## Tender Options

1. Supply and install 100% of pinboard as shown on architectural drawings with base scheme as 50% pinboard to that documented
2. Supply and install fixed whiteboards as documented with no fixed whiteboard to base scheme
3. Supply and install blinds to all external windows as shown on architectural drawings
4. Supply and install perforated plasterboard as shown on architectural drawings with base scheme as mineral fibre tiles

# 10

## Next Weeks DRG

**08/03/23**

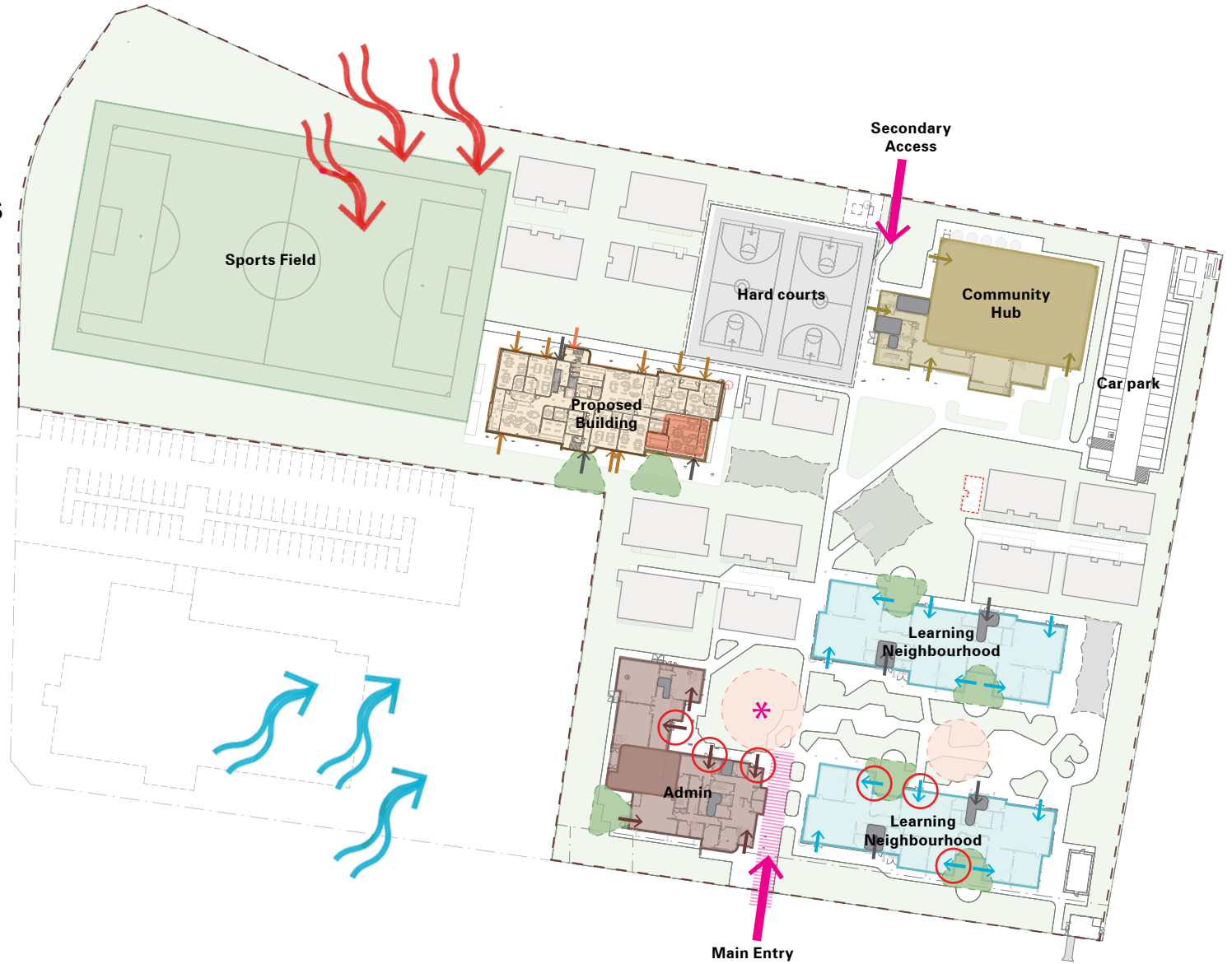
- Developed Floor Plans
- Design Principles/Strategies/Narrative
- External Materials Palette
- Internal Materials Palette
- BQSH Departures



**Questions?**

# 03

## Gaayip-Yaglia Primary School Site Connections & Key Relationships

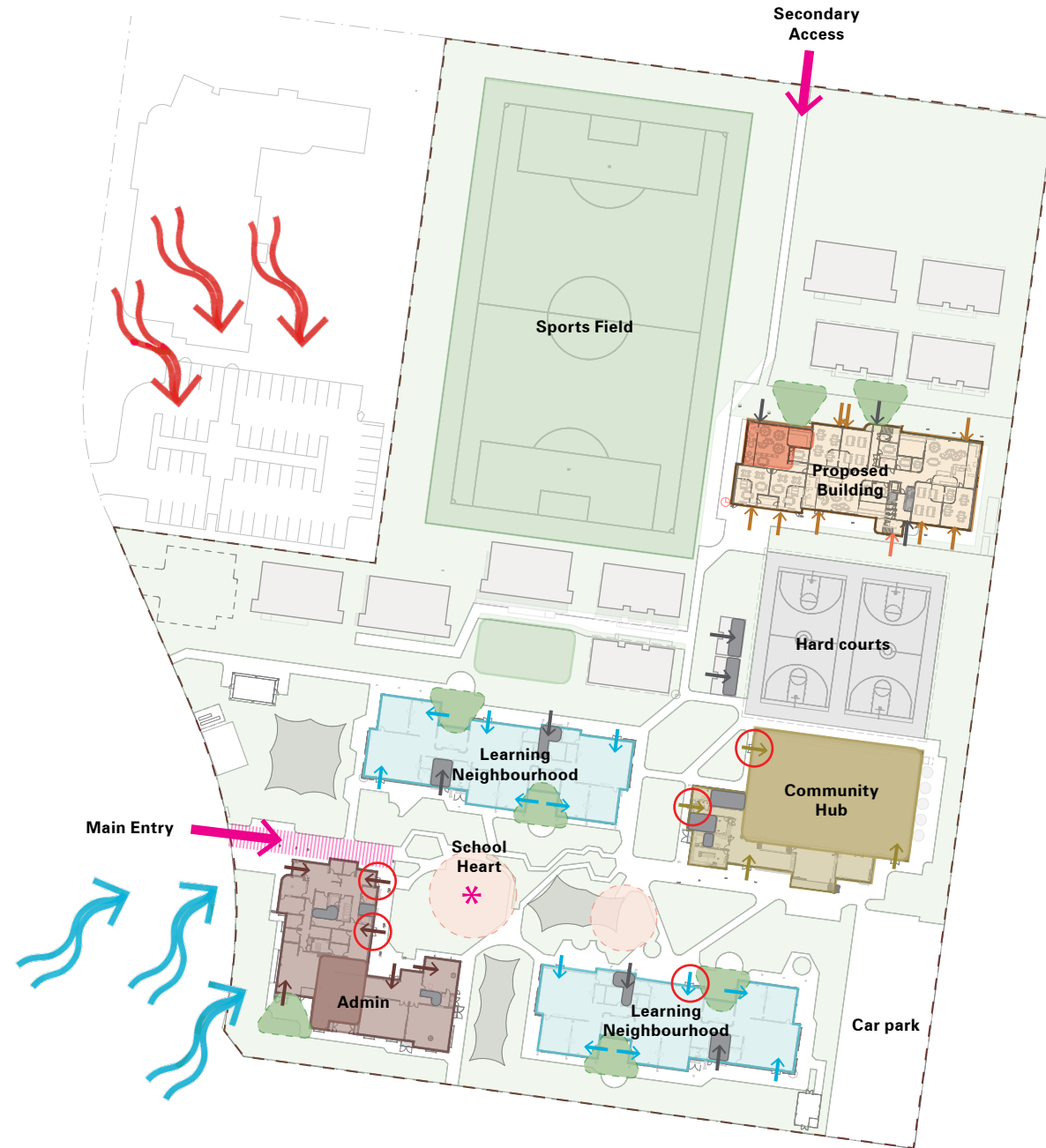


- Site Boundary
- Landscape
- Outdoor Learning
- Proposed Building
- Proposed Library/ Flexible
- Amenities
- Community Hub/Gym
- Learning Neighbourhood
- Administration/ Ex. Library
- School Heart
- Main Access
- Building Access
- Doors affected by prevailing winds



# 03






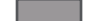







## Aintree Primary School Site Connections & Key Relationships

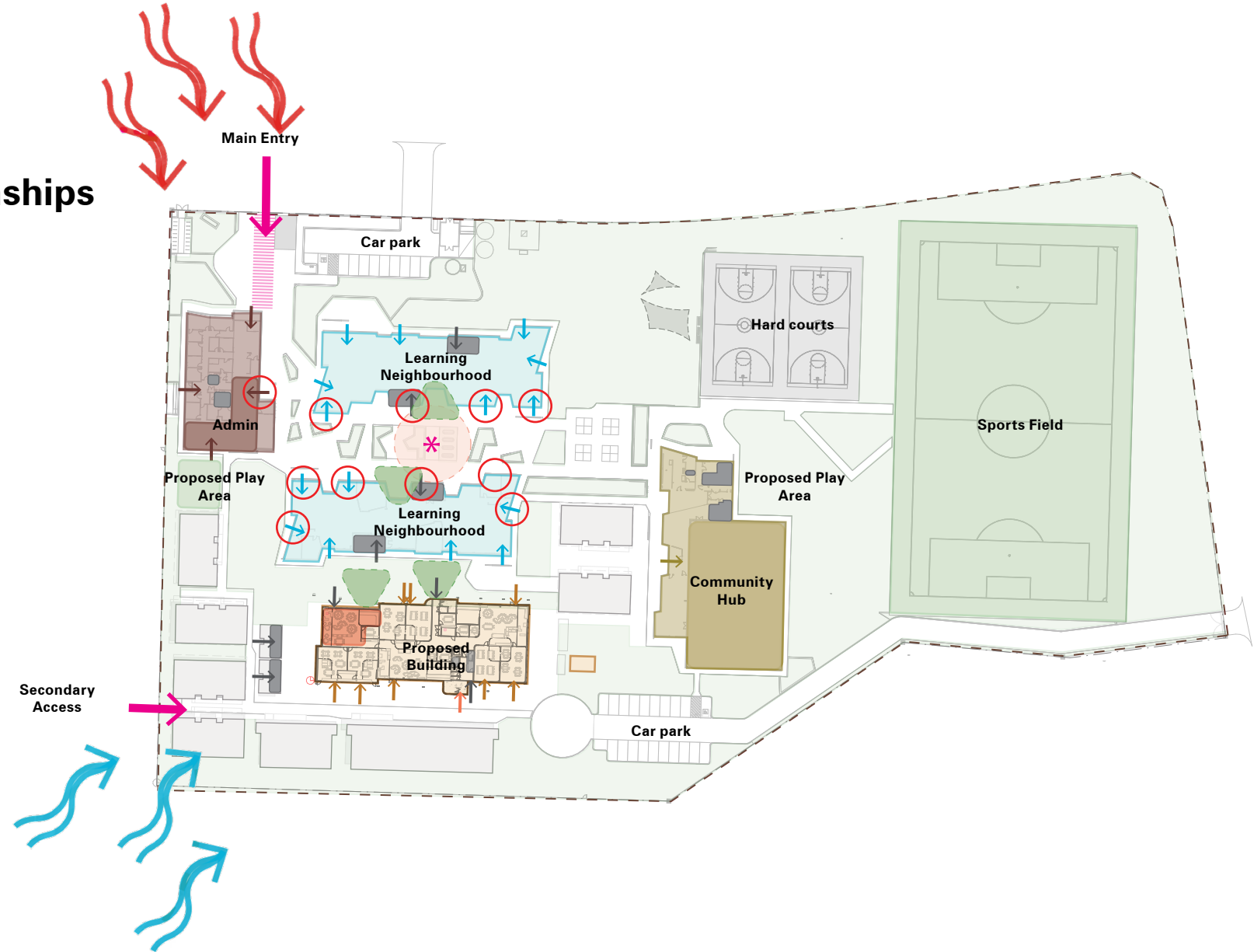


- Site Boundary
- Landscape
- Outdoor Learning
- Proposed Building
- Proposed Library/ Flexible
- Amenities
- Community Hub/Gym
- Learning Neighbourhood
- Administration/ Ex. Library
- \* School Heart
- Main Access
- Building Access
- Doors affected by prevailing winds

# 03

## Aitken Hill Primary School Site Connections & Key Relationships

-  Site Boundary
-  Landscape
-  Outdoor Learning
-  Proposed Building
-  Proposed Library/ Flexible
-  Amenities
-  Community Hub/Gym
-  Learning Neighbourhood
-  Administration/ Ex. Library
-  School Heart
-  Main Access
-  Building Access
-  Doors affected by prevailing winds



# 04

## Collaborative Learning



# 04

## Collaborative Learning



# 04

## Storytelling / Presentation



# 04

## Storytelling / Presentation



# 04

## General Learning Area



# 04

## Library / Flexible Space

Teaching Mode





# 04

## Library / Flexible Space

### Collaborative Group Mode

- Operable wall enables large open space for Collaborative group working



# 04

## Library / Flexible Space

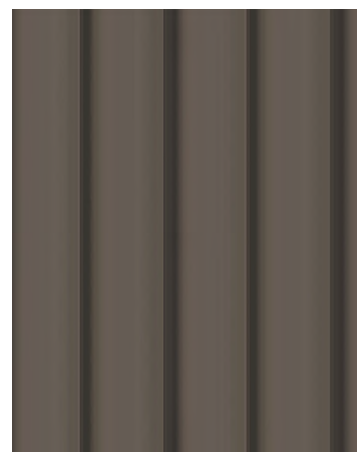
### Presentation Mode

- Operable wall to allow additional people
- AV enabled staff centre to allow for presentation for staff/events



# 05

## External Materials Strategy



Aitken Hill Primary School	Gaayip-Yaglia Primary School	Aintree Primary School	
			Base Brick
			Base Brick
			Metal Trim Colour
			Feature Screen Colour

# 05

## 3D Studies Entry

