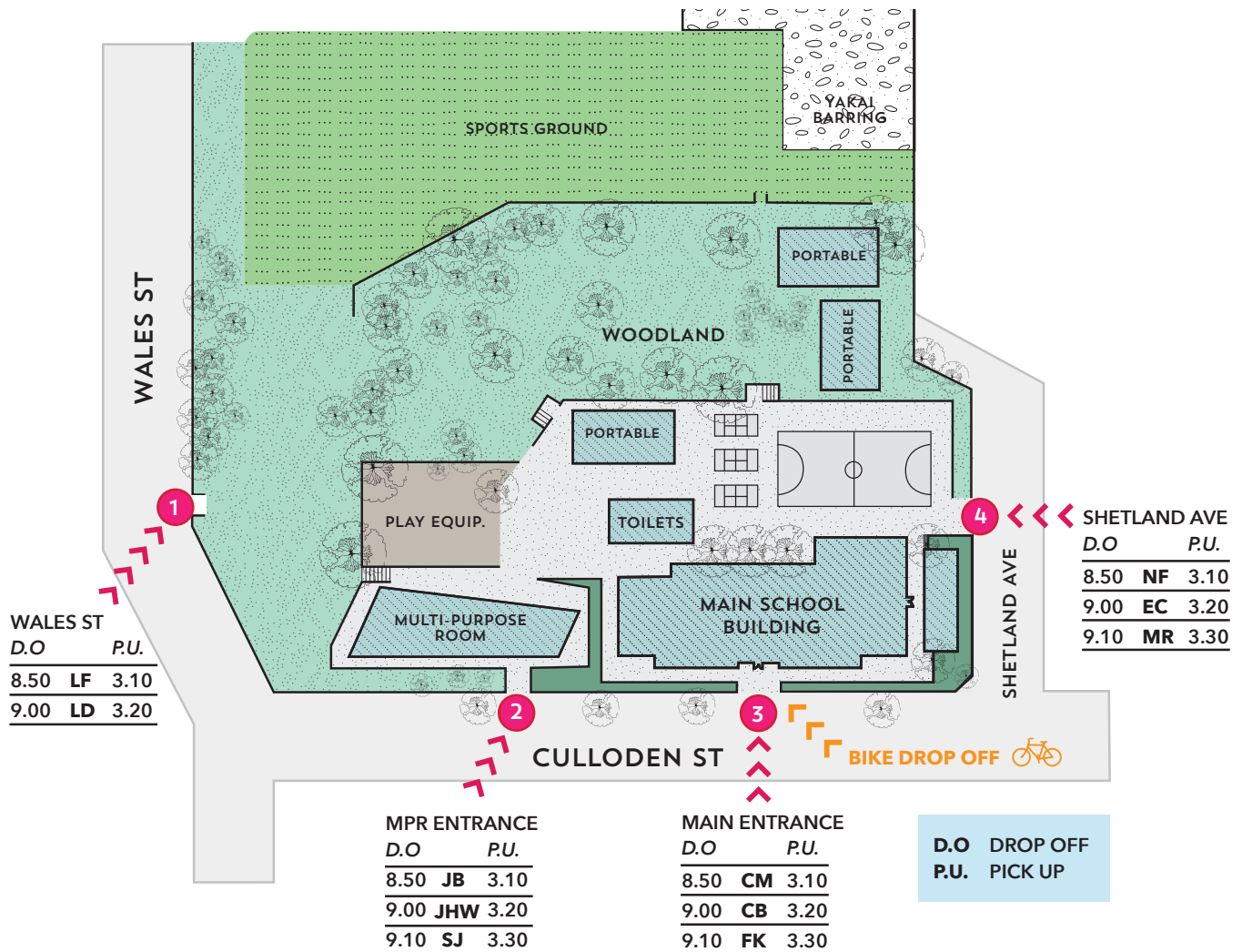


# PICK UP / DROP OFF

Tuesday 26th May - Friday 5th June

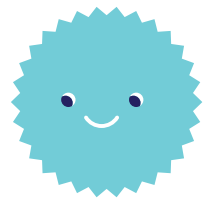


BRUNSWICK  
NORTH WEST  
PRIMARY SCHOOL



## Please note:

- This plan is only for the first phase (26th May - 5th June) when F-2 students are on-site. When the grade 3-6 children return, we'll ensure that families with more than one child meet at a **single drop off / pick up point**. We will communicate the plan with you in due course.
- Grade 3-6 children of essential workers already attending on-site learning should enter at **4** SHETLAND AVE at 8.50am
- Teachers will meet you at drop off and pick up points, and will wait until parents arrive. Please do your best to be on time to support this process and our staff. If you are unable to make these times, remember that **OSHC is available** for before and after school. OSHC staff will both drop off and pick up your children from their classrooms. For the rest of this term, it is free to families. You must however, enrol your children.
- Bikes** need to be dropped off by children at the bike racks as always, then go with their families to their drop off point. A staff member will be there to help.
- Late pick up / drop off procedure.** If for whatever reason you miss your drop off or pick up time please **CALL** the office, and a staff member will come out to greet you. **PARENTS AND CARERS ARE NOT PERMITTED IN THE SCHOOL GROUNDS UNTIL FURTHER NOTICE.**



For any concerns  
or queries please  
contact the office  
(03) 9386 4624