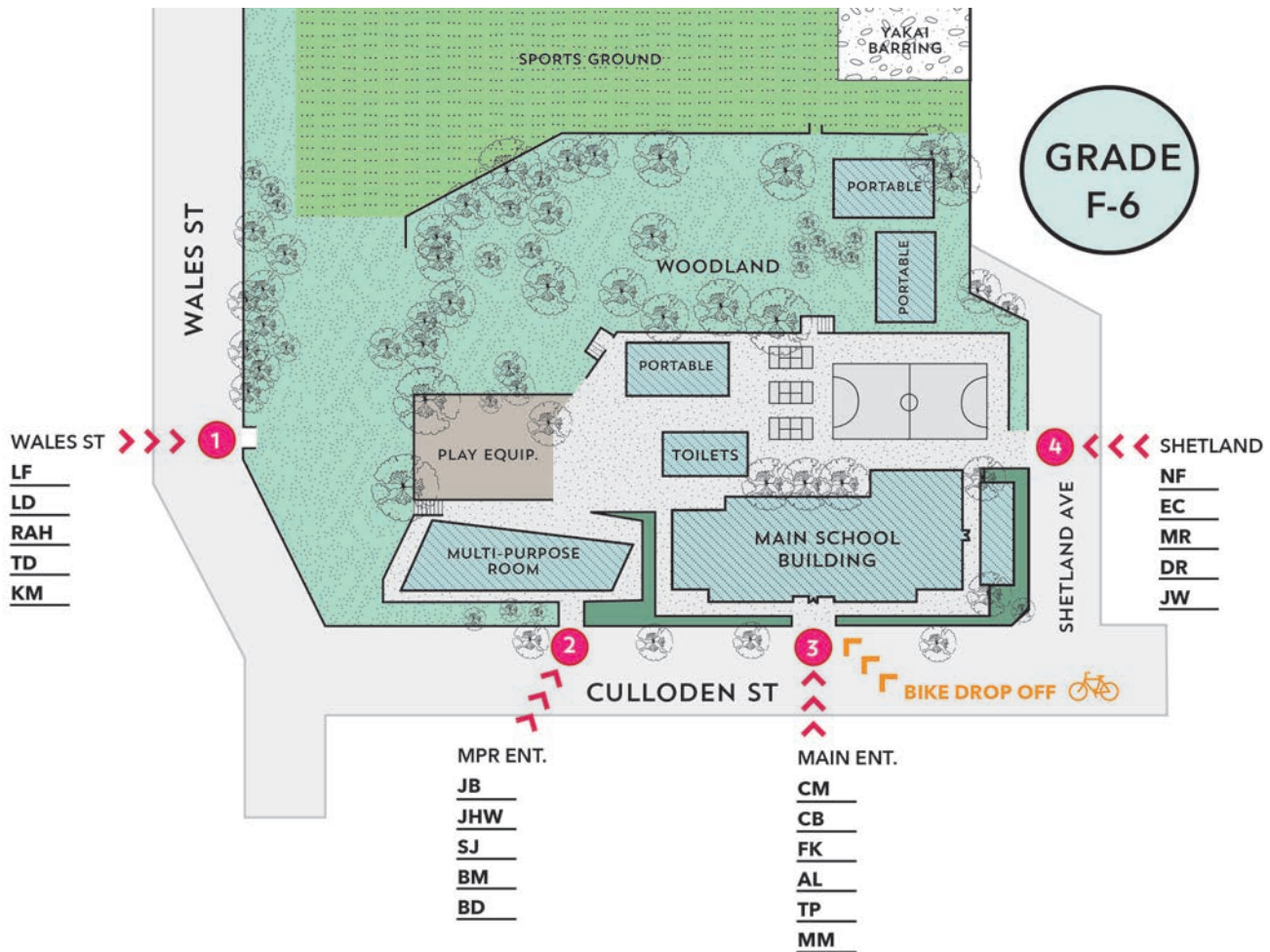


PICK-UP / DROP-OFF

Monday 12th October - *further notice.*



BRUNSWICK
NORTH WEST
PRIMARY SCHOOL



DROP-OFFS

Teachers will be waiting at the designated gates to greet your children. When ready they will enter the building together. Please refer to the above diagram.

9.00am: All students

PICK-UPS

Teachers will take their classes to the pick-up points, and will wait until parents arrive. Please do your best to be on time to support this process and our staff. To support social distancing, students are being released as follows:

3.15pm: Senior school (5/6) students plus siblings (Exit at senior student's gate)

3.20pm: Middle school (3/4) students plus siblings (Exit at middle student's gate)

3.30pm: Foundie and Juniors (F/1/2) students.

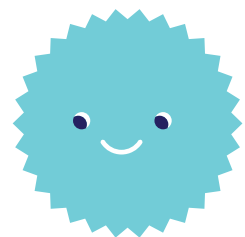
If you have an alternate pick up arrangement with another school family (for example, a neighbour), please inform the school office.

BIKES

Bikes need to be dropped off by children at the bike racks as always, then go with their families to their drop-off point. A staff member will be there to help.

LATE PICK UP / DROP OFF PROCEDURE.

If for whatever reason you miss your drop off or pick-up time please call the office, and a staff member will come out to greet you. **Parents and carers are not permitted in the school grounds until further notice.**



For any concerns
or queries please
contact the office
(03) 9386 4624