

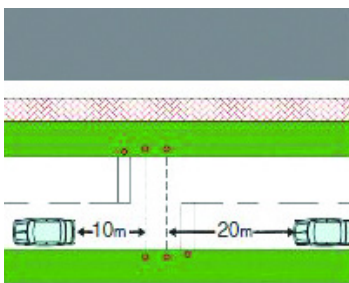
## School zones

Drivers must slow their vehicles to 25km/h in a school zone at any time, day or night, when a child is present. A zigzag white line is also usually marked on the road to let drivers know they are approaching a school zone.



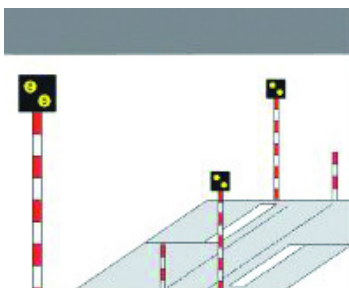
## School crossings

You cannot stop within 20m of the approach side or 10m of the departure side of a school crossing. This rule applies to all pedestrian crossings.



## Koala crossings

A Koala crossing consists of two yellow flashing lights mounted on red and white striped poles.

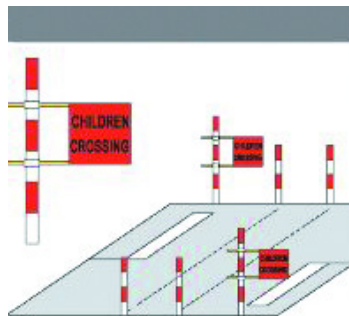


A 25km/h speed limit applies when the lights are flashing.

A driver must give way to any pedestrian.

## Emu crossings

An Emu crossing has a red 'Children Crossing' flag displayed on red and white striped posts.



The speed restriction of 25km/h applies at any time when a child is present so slow down to be safe and take care of children.

## Bicycle lanes

Bicycle lanes run alongside kerbs or next to parking lanes. They are indicated by painted lines, bicycle symbols and bicycle lane signs, or the word 'lane' painted in white. Some bicycle lanes (or sections of lanes) are painted green.



Some bicycle lanes operate around the clock. Others only operate during peak travel times (as specified on the signs) to allow parking for local businesses and residents.

It is illegal to drive, park or stop your vehicle in a bicycle lane and fines apply.



# SAFETY AROUND SCHOOLS



CITY OF  
TEA TREE GULLY  
*Naturally Better*

We want to ensure the safety of children, pedestrians and motorists around our streets and schools.

Parents and caregivers have a great responsibility to ensure children stay safe in school zones and have a key role in educating children about road safety.

## Helpful tips for parking around schools

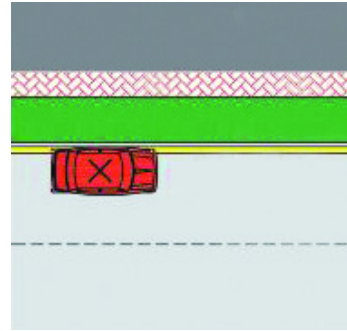
- Allow enough time to take the child to the school gate safely without rushing
- Always observe parking signs and speed limits in and around school zones. They are designed to keep children safe
- Talk about signs and traffic lights with your child. Identify and discuss places where it is safe to get in and out of the car
- Teach your child how to cross the road using the 'stop, look and listen' process – stop at the kerb, look and listen for traffic and then decide whether it is safe to cross
- Park a few streets away and walk your child to school. This is also good exercise and helps teach your child road safety rules.

Note – Council officers patrol school parking in the morning and afternoon during school terms.

## Common parking problems

### No Stopping

You must not park or stop in a No Stopping Zone for any reason. A continuous yellow line marked on the edge of the road has the same meaning as a No Stopping zone.



### No Parking

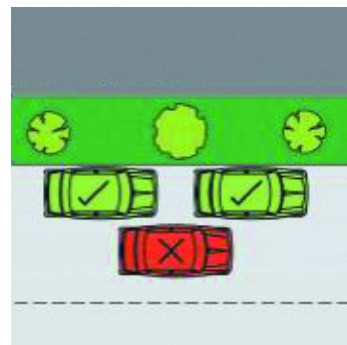
You can only stop in a No Parking area for the immediate purpose of picking up or dropping off passengers or goods. You must not leave the vehicle unattended (no more than three metres away).



You can wait in this location no more than two minutes (without moving).

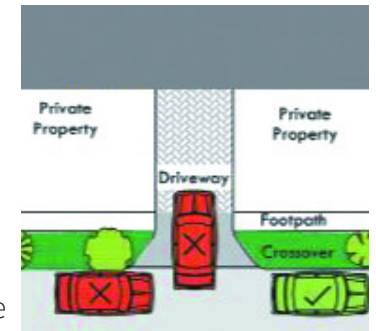
### Double parking

Drivers must not stop next to a parked vehicle when picking up or dropping off children, not even for a few seconds. This practice is illegal and creates dangerous situations at any time on any street.



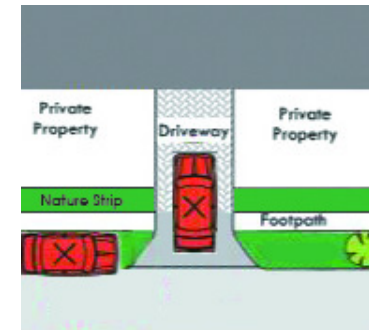
## Driveways

You may park so that the front of your vehicle is level with the approach or the back is level with the departure side of a driveway to any private or public property so that vehicles can enter and depart.



## Footpaths or nature strip

Parking is prohibited at all times. It creates dangerous situations for pedestrians and other vehicles in the vicinity.



## Bus zones

You must not stop or park in a bus zone at any time.



## Kiss and drop

This is an area near the school gates for you to drop your child off safely and quickly. The intention is that drivers do not wait in these zones and that they stay in the vehicle so queues are minimised.

**CHILD SAFETY AREA**

**Drop Off & Pick Up Only**

Drivers must not leave vehicles unattended

2 minute limit  
8am - 9am & 2pm - 4pm  
School Days

SCHOOL PRECINCT SAFETY