



Work Safe Policies

LCS: Parking and Windsor Park Policy

LCS Drop-Off/Pick-up and Parking	<p>For safety reasons, the turning circle cannot be used for any dropping off or picking up of students before school and after school.</p> <p>At all times, West Tamar Highway or Windsor Park must be used for the purpose of picking students up from and dropping them off for school.</p>
LCS Car Park	<ul style="list-style-type: none">• All staff and students must park at school and not at Windsor Park.• Staff and Students may not park on the West Tamar Highway.• All vehicles must reverse park for safety reasons.• (If you are unable to reverse park, please drive past the gym to the end of the car park & forward park near the fence)• Please honour the school's parking signage as to where and where not to park and strictly hold to the speed limit of 10km/h on the school grounds.

- For those using the West Tamar highway as a pick-up and drop-off zone, please be mindful not to park in front of residents' driveways.
- Strictly no parking, drop-off, or pick-up in the turning circle, please. It creates safety hazards and traffic issues for us.
- People with disabilities and have a disc displayed in their vehicle, are allowed to park in the visitor car park at any time.
- Some parents have received a special LCS Parking Pass to park in the school's Gymnasium Car Park or any of the "Visitor" spots in the long car park. These vehicles must display the pass when they park in these areas.
- To obtain such a pass, a written application must be submitted to the Business Manager.

Windsor Park

STRICTLY NO PARKING in the "No Parking" zone.

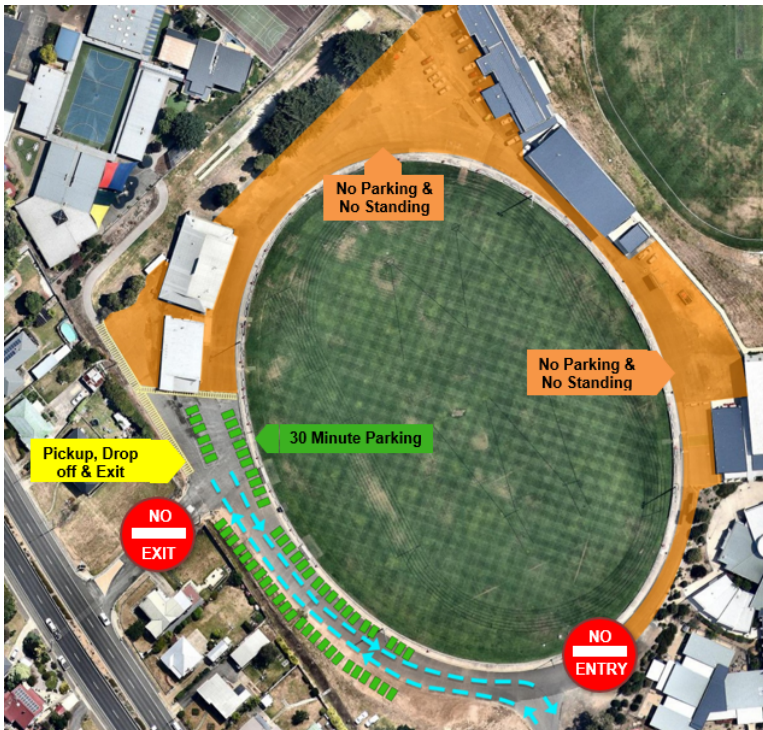
STRICTLY NO PARKING in the "Pick-up and Drop-off" zone.

If Parents need to park and accompany their child(ren) to class, they should park in the DESIGNATED Parking areas.

All traffic through the Windsor Park Precinct must honour the **speed limit of 10km/h**.

It is important to remember that Windsor Park itself is a pick-up and drop-off zone. If you are going to be at school for longer than 30 minutes, please use the LCS Car Park.

Please note that the back gate from Windsor Park into the Junior School is locked daily from 9.30am to 2:45pm.



- 30 Minute Parking
- No Parking & No Standing
- Driving
- Walk Way

