

# Traffic Safety Around Schools

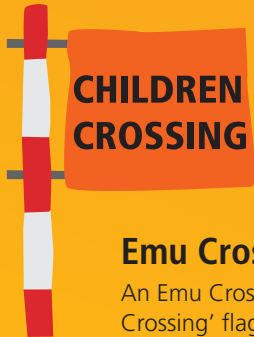


## School Zones

School zones are installed on most roads around schools - as shown by these signs. A zigzag white line is also usually marked on the road to let drivers know they are approaching a School Zone.

Drivers must not exceed 25km/h at any time of the day or night when a child is in the zone. This includes children walking or riding a bicycle either on the road, footpath or median strip.

The lower speed limit applies whenever children are in the zone, including weekends and school holidays.



## Emu Crossings

An Emu Crossing has a red 'Children Crossing' flag displayed on red and white striped posts.

When the flags are displayed drivers must give way to pedestrians crossing or about to cross the road.

Emu crossings are located within School Zones, which have a speed limit of 25km/h when children are on the road or footpath.

If the 'Children Crossing' flags are not up, the 25km/h school zone speed limit still applies if there are children present.

## COMMON OFFENCES

**AVOID THE FINE... READ THE SIGNS!**

NATURE OF OFFENCE	PENALTY
Parking for longer than indicated (timed parking)	<b>\$56</b>
Failing to park in road related area (verge)	<b>\$70</b>
Parking against the flow of traffic	<b>\$73</b>
Stopping where no parking sign applies	<b>\$85</b>
Stopping in, on or across a driveway	<b>\$85</b>
Stopping where no stopping sign applies	<b>\$102</b>
Double parking	<b>\$102</b>
Stopping on or near a children's crossing	<b>\$102</b>
Stopping on road with continuous yellow line	<b>\$104</b>
Stopping on, path, dividing strip or nature strip	<b>\$104</b>
Stopping in a bus zone	<b>\$140</b>

*These fees may be subject to change as of 1 July annually.*

## FOR FURTHER INFORMATION

### Alexandrina Council Community Safety Team

**Telephone:** (08) 8555 7000  
**Website:** [www.alexandrina.sa.gov.au](http://www.alexandrina.sa.gov.au)  
**Facebook:** [facebook.com/alexandrinacouncil](https://facebook.com/alexandrinacouncil)  
**Email:** [alex@alexandrina.sa.gov.au](mailto:alex@alexandrina.sa.gov.au)  
**In Writing:** Alexandrina Council  
PO Box 21, Goolwa SA 5214



## PARKING AROUND ALEXANDRINA



## No Stopping Zones

### Australian Road Rule 167

A vehicle must not stop in an area where a no stopping sign is placed even if you are only letting someone out of the car and regardless of whether you leave the engine running and stay in the car.

These are usually installed in areas that need clear sight for safety reasons such as crossings and schools.



## No Parking Zones

### Australian Road Rule 168

There is a two-minute passenger loading limit on a no parking zone. The driver cannot leave the vehicle unattended unless the driver is within three metres of the vehicle and must move on within two minutes after stopping.

These zones are generally around schools and the idea of them is a 'kiss and drop'.



## Bus Zone

### Road Rule 195

You must not stop your vehicle in an area that is indicated as a bus zone.

Community Safety Officers will be doing patrols throughout the year in particular at school zones to re-enforce correct parking.



## Permissive Parking

### Australian Road Rule 205

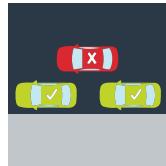
Drivers are only allowed to park & not exceed the time period indicated on the sign. Permissive parking signs are used to help with the regular turn over of vehicles so that more people get a chance to park. These signs usually show the times and days to which these restrictions apply.



## Yellow Lines

### Australian Road Rule 169

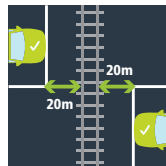
You must not park your vehicle, even partially on a yellow line.



## Double Parking

### Australian Road Rule 189

A driver must not stop on the road next to a parked vehicle.



## Crossings

You may not park or stop within 20 metres coming into a children crossing or within 10 metres exiting a children crossing.

A driver must not stop on a level crossing, or on a road within 20 metres before the nearest rail or track to the driver approaching the crossing and 20 metres after the nearest rail or track to the driver leaving the crossing.



## Driveways

### Australian Road Rule 198 (2)

You must not park your vehicle on or across a driveway, even if this driveway is to your own property. You are allowed to stop across a driveway only if you are dropping off, or picking up passengers and do not leave the vehicle unattended and complete the dropping off, or picking up within 2 minutes of stopping.



## Parking on the Council Verge (Nature Strip)

### Australian Road Rules no. 197 (1)

For the safety of pedestrians, and to not cause property damage to the environment, you must not park even partially on footpaths or the nature strip.

Expiation notices will be given to vehicles that park on the Council Verge.

# Traffic Safety Around Schools



## Wombat Crossings

A Wombat Crossing consists of a wide road hump marked with thick white stripes.

A 40km/h speed limit applies at all times within 30-40 meters of the crossing as shown on signs.

When a pedestrian is crossing or about to cross the road, drivers must stop and give way.



## Koala Crossings

A Koala Crossing consists of two yellow flashing lights mounted on red and white striped poles.

Koala Crossings operate only when the yellow lights are flashing. A 25km/h speed limit applies between signs on the approaches to the crossing when the lights are flashing, and drivers must stop and give way to anyone using the crossing or about to cross the road.

School monitors may be present at the crossings and it is important to obey the Stop signs used by the monitors.