

# School Performance Report 2021

## Warrandyte Primary School

29 November 2021



## WARRANDYTE PRIMARY SCHOOL (12)

Domains: 6 out of 6  
Measures: 16 out of 16

### Overall Performance Group



Current Level: High

Change Level: Increased

Performance is high or very high. This level of performance is maintained consistently over three years or is on a positive improvement trajectory with the school acting as an influencer and system leader.

As an overall performance group, this indicates that the majority of domains and measures have positive results.

A school's overall performance group represents its combined performance on the Achievement, School Climate, Student Attitudes, Engagement, Participation and Senior Secondary (for secondary, Pri/Sec schools only) domains.

### Domain Performance Group

#### Achievement (Reading)

INFLUENCE

The Achievement (Reading) domain measures performance on NAPLAN assessments in Reading; which includes achievement in top two bands, lifting low performers and positive change in benchmark growth.

#### Achievement (Numeracy)

INFLUENCE

The Achievement (Numeracy) domain measures performance on NAPLAN assessments in Numeracy; which includes achievement in top two bands, lifting low performers and positive change in benchmark growth.

#### School Climate

INFLUENCE

The School Climate domain measures staff endorsements of Collective Efficacy and Academic Emphasis from the School Staff Survey.

#### Student Attitude

TRANSFORM

The Attitudes to School domain measures students engagements in Stimulating Learning, Learning Confidence and Student Safety from the Attitudes to School Survey.

#### Engagement

RENEW

The Engagement domain focuses on students attendance.

#### Participation

STRETCH

The Participation domain measures students participation in NAPLAN assessments, responses to School Staff Survey and responses to Attitudes to School Survey.

For a more in-depth look at the data in this report, including five-year trends and comparisons with Similar Schools, see the [Panorama Dashboards](#).



## WARRANDYTE PRIMARY SCHOOL (12)

Domain	Domain Performance Group	Measure	Measure Performance Group	Current Result (Year)	Current Result (Latest year)	Current Level	Change result (Last 3 years)	Change Level
Achievement (Reading)	Influence (High, Increased)	% of students in Top two bands (Year 5)	Influence	2021	57.9%	Very High	7.1%	Increased Significantly
		% of students in Bottom two bands (Year 5) <sup>1</sup>	Renew	2021	5.3%	Low	1.1%	Maintained
		% of students meeting or above benchmark growth (Years 3 to 5) <sup>2</sup>	Influence	2021	86.7%	High	1.8%	Increased
Achievement (Numeracy)	Influence (Very High, Increased Significantly)	% of students in Top two bands (Year 5)	Influence	2021	42.1%	High	5.8%	Increased
		% of students in Bottom two bands (Year 5) <sup>1</sup>	Influence	2021	0.0%	Very Low	-4.2%	Decreased
		% of students meeting or above benchmark growth (Years 3 to 5) <sup>2</sup>	Influence	2021	100.0%	Very High	8.4%	Increased Significantly
School Climate	Influence (High, Increased Significantly)	% of positive endorsement in Collective Efficacy	Influence	2021	89.7%	High	7.4%	Increased Significantly
		% of positive endorsement in Academic Emphasis	Stretch	2021	77.3%	Medium	16.3%	Increased Significantly
		% of positive endorsement in Instructional Leadership	Influence	2021	90.1%	Very High	16.5%	Increased Significantly
Student Attitude	Transform (Very Low, Maintained)	% of positive endorsement in Stimulated Learning (Years 5-6)	Transform	2021	47.1%	Very Low	-12.0%	Decreased Significantly
		% of positive endorsement in Sense of Confidence (Years 5-6)	Transform	2021	72.1%	Very Low	0.1%	Maintained
		% of positive endorsement in Managing Bullying (Years 5-6)	Stretch	2021	76.5%	Low	8.5%	Increased Significantly

<sup>1</sup> a low Current Result and a decrease in Change Result is desirable for this measure

<sup>2</sup> this measure is a weighted average of two years (for Current Result) or more (for Change Result)



## WARRANDYTE PRIMARY SCHOOL (12)

Domain	Domain Performance Group	Measure	Measure Performance Group	Current Result (Year)	Current Result (Latest year)	Current Level	Change result (Last 3 years)	Change Level
Engagement	Renew (Medium, Maintained)	Attendance Rate	Renew	2020	92.8%	Medium	0.1%	Maintained
Participation	Stretch (Low, Increased)	% of students participating in NAPLAN (Year 5, Reading)	Stretch	2021	95.0%	Medium	5.4%	Increased Significantly
		% of students participating in ATOS (Years 5-6)	Transform	2021	87.2%	Very Low	0.3%	Maintained
		% of staff participating in Staff survey	Stretch	2021	68.4%	Very Low	12.8%	Increased Significantly

For additional information see: [Frequently Asked Questions](#)



# How to read your School Performance Report

# Differentiated School Performance Groups



The Differentiated School Performance Groups (Figure 1) complement the revised approach to school review and differentiated approach to school improvement.

Five performance groups are identified.

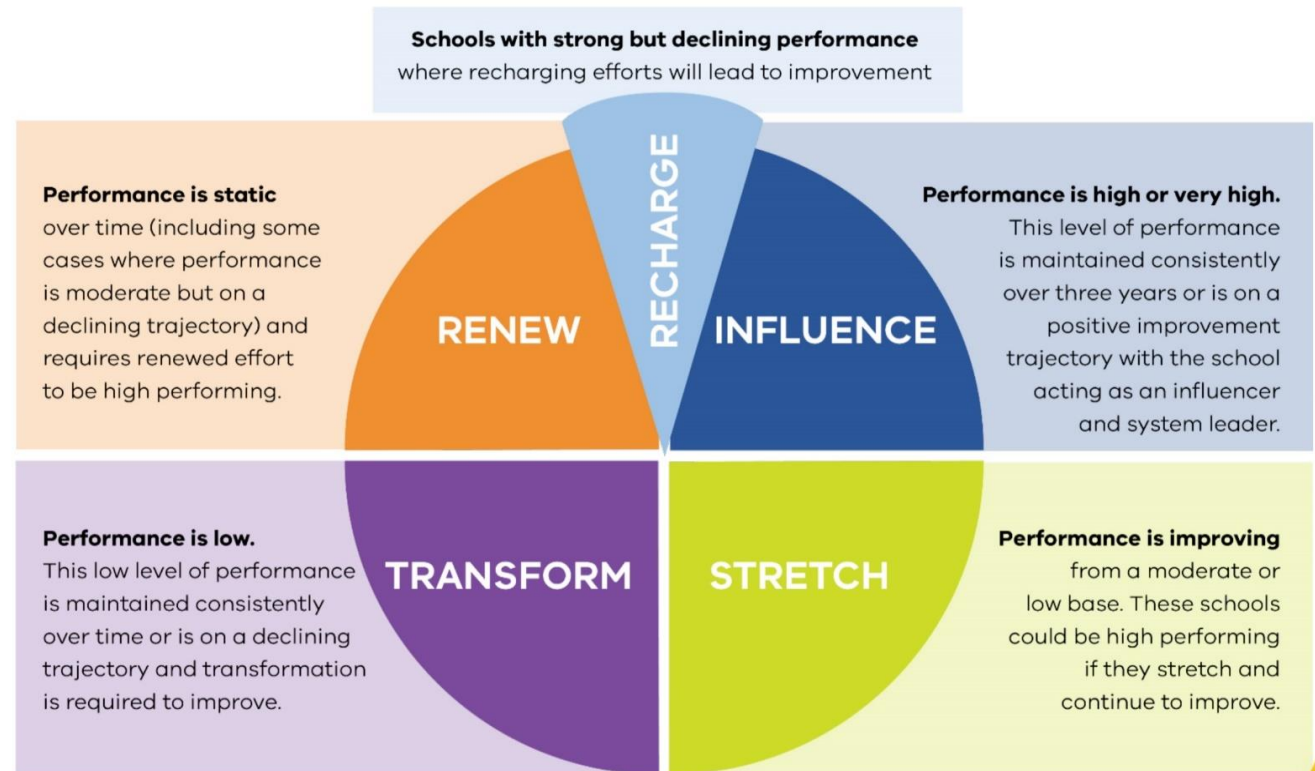


FIGURE 1: THE FIVE SCHOOL PERFORMANCE GROUPS

# Determining Your School's Performance Group



Current Level	Change Level				
	1 (Decreased Significantly)	2 (Decreased)	3 (Maintained)	4 (Increased)	5 (Increased Significantly)
5 (Very High)	Light Blue	Light Blue	Dark Blue	Dark Blue	Dark Blue
4 (High)	Light Blue	Light Blue	Orange	Dark Blue	Dark Blue
3 (Medium)	Orange	Orange	Orange	Yellow-Green	Yellow-Green
2 (Low)	Purple	Purple	Orange	Yellow-Green	Yellow-Green
1 (Very Low)	Purple	Purple	Purple	Yellow-Green	Yellow-Green

FIGURE 2: SCHOOL PERFORMANCE TABLE

- To determine your school's performance group, the 'current level' and 'change level' of all schools in the state are segmented into five performance levels to create a five-by-five table (25 segments) for each measure
- Your school's placement within this table, based on your school's 'current level' and 'change level' for each applicable measure, determines the performance group to which your school belongs
- Measures are aggregated to the domain level and an overall performance group level to provide an overall summary of your school's performance

MEASURES			DOMAINS			
Top two bands of NAPLAN	+	Bottom two bands of NAPLAN	+	NAPLAN Benchmark Growth	=	ACHIEVEMENT (Reading/Numeracy)
Collective efficacy (% of positive survey responses)	+	Academic emphasis (% of positive survey responses)	+	Instructional leadership <sup>1</sup> (% of positive survey responses)	=	SCHOOL CLIMATE
Stimulated learning (% of positive survey responses)	+	Sense of confidence (% of positive survey responses)	+	Managing Bullying (% of positive survey responses)	=	STUDENT ATTITUDE
Primary to Secondary <sup>2</sup> (% of positive transitions)	+	Attendance Rate		=	ENGAGEMENT	
Mean VCE English score <sup>3</sup> (study group)	+	Senior Secondary completion <sup>3</sup>		=	SENIOR SECONDARY	
NAPLAN participation	+	Attitudes to School (survey participation rate)	+	School Staff Survey (survey participation rate)	=	PARTICIPATION

The **six domains** and associated **measures** shown at left form the basis of the differentiation method.

These have been selected based on their alignment to FISO school improvement objectives and Education State targets.

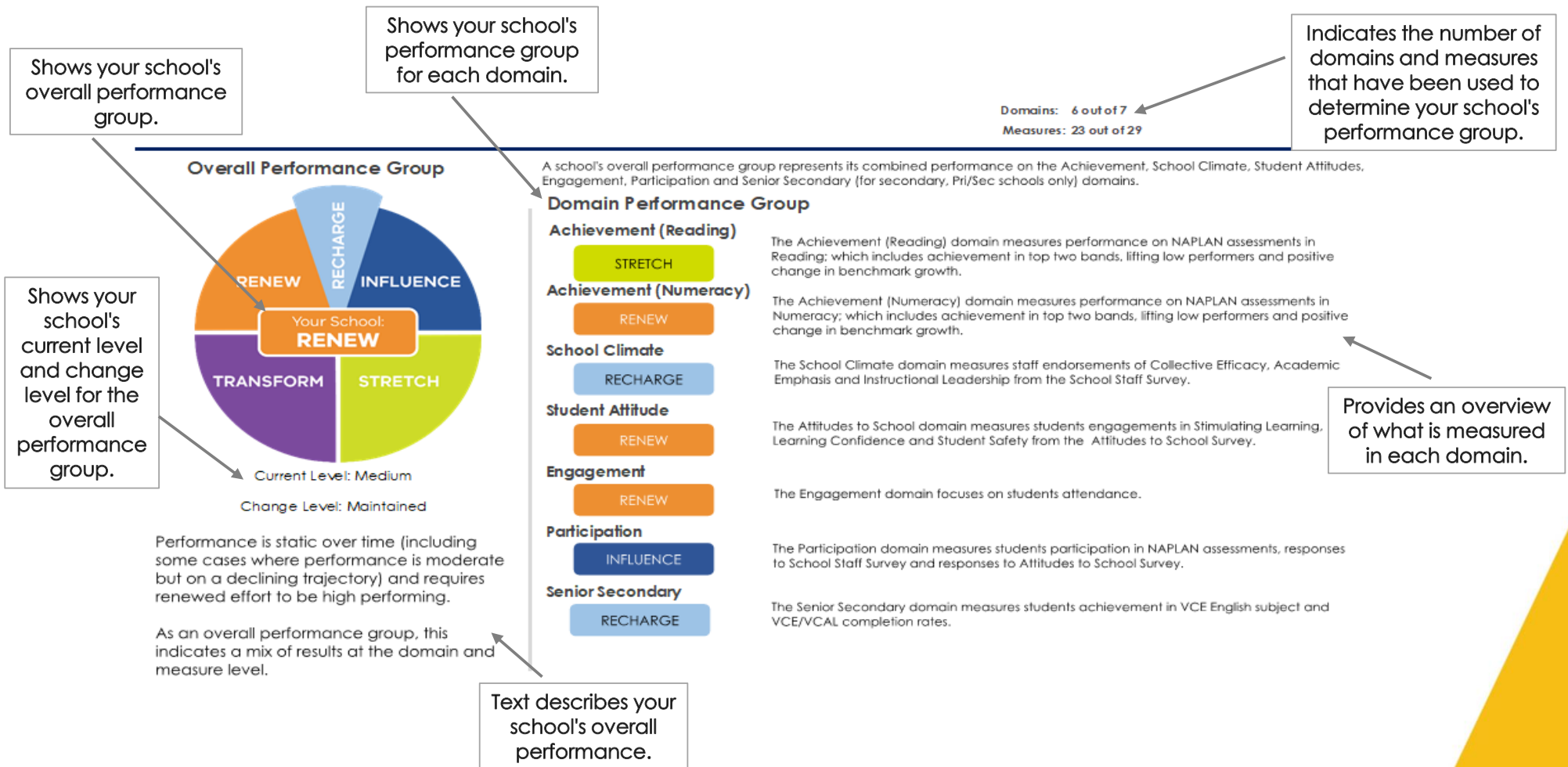
<sup>1</sup> The Instructional Leadership Measure in the School Climate Domain was introduced in 2021.  
<sup>2</sup> The Primary to Secondary Measure in the Engagement Domain will be introduced in the future.  
<sup>3</sup> Only applicable to schools that offer senior secondary program

FIGURE 3: MEASURES AND DOMAINS

# Reading your school performance report: Summary page



The summary page provides a graphical summary of your school's overall performance group and your performance in each applicable domain.





# How to read your school performance report: Detail pages



Your school's domain performance group, current level and change level for each domain.

The measures that are used to determine your school's performance in each domain.

Your school's performance group for each measure.

Your school's most recent performance result for each measure.

Shows your school's current level for each measure.

The change in your school's performance over the last 3 years for each measure.

Domain	Domain Performance Group	Measure	Measure Performance Group	Current Result (Year)	Current Result (Latest year)	Current Level	Change result (Last 3 years)	Change Level
Achievement (Reading)	Recharge (High, Decreased)	% of students in Top two bands (Year 9)	Influence	2021	45.4%	Very High	1.3%	Increased
		% of students in Bottom two bands (Year 9) <sup>1</sup>	Recharge	2021	12.7%	Low	2.1%	Increased
		% of students meeting or above benchmark growth (Years 7 to 9) <sup>2</sup>	Recharge	2021	77.6%	High	-2.2%	Decreased
Achievement (Numeracy)	Renew (Medium, Decreased)	% of students in Top two bands (Year 9)	Recharge	2021	51.7%	Very High	-2.4%	Decreased
		% of students in Bottom two bands (Year 9) <sup>1</sup>	Influence	2021	2.5%	Very Low	-1.8%	Decreased
		% of students meeting or above benchmark growth (Years 7 to 9) <sup>2</sup>	Transform	2021	67.7%	Low	-7.6%	Decreased Significantly
School Climate	Renew (Medium, Maintained)	% of positive endorsement in Collective Efficacy	Renew	2021	57.1%	High	-0.7%	Maintained
		% of positive endorsement in Academic Emphasis	Renew	2021	60.8%	High	0.9%	Maintained
		% of positive endorsement in Instructional Leadership	Stretch	2021	37.1%	Very Low	3.2%	Increased
Student Attitude	Transform (Low, Decreased)	% of positive endorsement in Stimulated Learning (Years 7-12)	Renew	2021	55.6%	Medium	-0.8%	Maintained
		% of positive endorsement in Sense of Confidence (Years 7-12)	Renew	2021	62.2%	Medium	-3.9%	Decreased
		% of positive endorsement in Managing Bullying (Years 7-12)	Transform	2021	54.3%	Very Low	-2.6%	Decreased

Shows your school's change level for each measure.