

## CAREER NEWS

Friday 13 August



### Dates to Diarise in Term 3

- **University / TAFE Open Days 2021** – throughout August
- **Year 12 VTAC timely applications** – throughout August and September
- **VTAC SEAS and Scholarship applications** – throughout August and September



### Apprenticeships and Employment

*MEGT is an Australian not-for-profit organisation that has been supporting local employers, apprentices, trainees, job seekers and students for over 35 years.*

*Our experienced local consultants work across every state in Australia, and in the ACT helping Aussie businesses, apprentices and trainees get the most from the Australian Apprenticeships programme.*

MEGT has over 35 years of experience in matching job seekers and employers, and they have a higher than the national average apprenticeship completion rate.

MEGT has a [Career Hub](#) packed full with tools and information for potential apprentices and trainees, and students considering an apprenticeship or traineeship are encouraged to register on the Career Hub and receive support in searching for an apprenticeship or traineeship. Once registered, job seekers have access to a range of tools and information to assist them in their search for an apprenticeship or traineeship, including our Career Quiz, Skills Assessment, and job seeker toolkit.

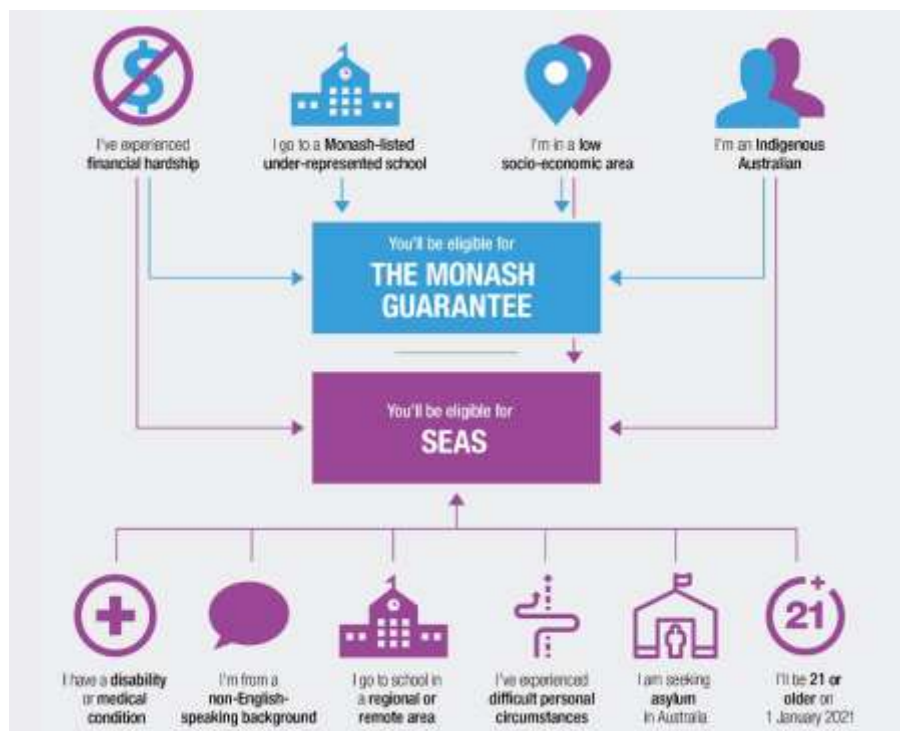
The Career Hub Team will chat with job seekers about any questions they might have about becoming an apprentice or trainee or connect them with one of the MEGT Career Advisors, who can provide guidance on appropriate training and development pathways. [Register here.](#)

## Monash Entry Schemes

At Monash, we know that a student's ATAR might not accurately reflect their ability. Life can be a bumpy road, and there are all sorts of circumstances that can get in the way of a student's academic achievement.

We operate two schemes – the Monash Guarantee and the Special Entry Access Scheme (SEAS) – that can help students enter their preferred course, even if their ATAR is below the lowest selection rank. By having two schemes, Monash wants to create a level playing field for everyone who aspires to an exceptional education. By operating both schemes, Monash can also help as many students as possible reach their full potential.

Students do not have to choose between the two schemes – depending on their situation and background, they could be eligible for one or both.



### 1. The Monash Guarantee

The Monash Guarantee can get a student into a Monash course even if they do not reach the course's lowest selection rank. Students could be eligible for the Monash Guarantee if they:

- have experienced [financial disadvantage](#)
- live in a [low socio-economic area](#)
- are an [Indigenous Australian](#)
- attend a [Monash list under-represented school](#)

Every Monash undergraduate degree has a [Monash Guarantee ATAR](#), which is lower than the expected selection rank for that course. For most courses, if a student meets the [eligibility criteria](#), achieves the Monash Guarantee ATAR (starting at 70.00), and completes all course prerequisites, they will be eligible for a place at Monash. To be considered for the Monash Guarantee, Year 12 students must *submit a VTAC course application, complete a Special Entry Access Scheme (SEAS) application including any required documentation, and complete a VTAC Scholarship application.*

Find out more at [The Monash Guarantee](#).

## 2. Special Entry Access Scheme (SEAS)

SEAS adjusts a student's ATAR in recognition of circumstances that may have affected their education. This gives students a better chance of getting an offer for the course they want. Monash uses this adjusted ATAR for selection into a course.

Find out more at [Monash SEAS](#).



### News from the University of Melbourne

#### ➤ Guaranteed Entry Scheme

The University offers four types of guaranteed entry pathways to its professional entry graduate courses. For each pathway, students must enrol in an undergraduate degree at the University of Melbourne to be eligible. A guaranteed entry is available for most graduate degrees, depending on the ATAR a student achieves:

<b>ATAR of 99.90+ Melbourne Chancellor's Scholarship</b>	A Guaranteed Commonwealth Supported Place in one of the <a href="#">Graduate Course Guarantee Courses</a> for students who meet the prerequisite course and entry requirements for the master degree. <b>Visit <a href="#">Melbourne Chancellor's Scholarship</a> to find out more specific details about the exact value of the scholarship for domestic and International students.</b>
<b>ATAR of 95.00 – 99.85</b>	<u>Domestic students</u> will be guaranteed a CSP place in a professional entry master's (coursework) degree from a select list if they satisfy the course prerequisites. In most cases they need to achieve a particular weighted average mark (GPA) in their undergraduate degree as well. <u>International students</u> will be guaranteed an international fee place in a professional entry master's (coursework) degree from a select list if they satisfy the course prerequisites. In most cases they need to achieve a particular weighted average mark (GPA) in their undergraduate degree as well. <b>Visit <a href="#">Courses for ATARs 95 and above</a> to find out which courses apply and the exact GPA required.</b>
<b>ATAR below 95.00</b>	These guaranteed entry pathways into limited graduate courses are based on academic performance in a current University of Melbourne undergraduate degree and are not subject to any ATAR requirement. Eligibility will also be based on meeting the prerequisites for the graduate degree. <b>Visit <a href="#">Course Guarantees without an ATAR</a> to find out more.</b>

Find out more at [Guaranteed Entry to Graduate Degrees](#) and [Graduate Degree Packages](#) to learn more.

## ➤ **Access Melbourne**

**Access Melbourne** is special entry and access scheme offered by the University of Melbourne to domestic students. By applying through Access Melbourne, students can be assured that any circumstances that have affected their education will be considered when the university assesses their Year 12 results. Access Melbourne can assist eligible students to enter a course even if their ATAR is below the lowest selection ranked ATAR and to also be considered for a scholarship.

**Year 12 students can apply using one or more of the following categories:**

- Disadvantaged financial background
- Applicants from rural or isolated areas
- Under-represented school
- Difficult circumstances
- Disability or medical condition
- Non-English-speaking background
- Recognition as an Indigenous Australian

**Access Melbourne categories that provide a guaranteed entry are:**

1. Disadvantaged financial background
2. Applicants from rural or isolated areas

Students eligible to apply as a rural or financially disadvantaged student, and meet course prerequisites, may apply for guaranteed entry to the University of Melbourne with an –  
ATAR of 76.00 for a place in Arts, Design or Science  
ATAR of 82.00 for a place a place in Commerce  
ATAR of 88.00 for a place a place in Biomedicine

The University now also offers guarantees for [Indigenous students](#) who meet course prerequisites and apply with an ATAR of:

- 50.00 Arts (Extended)
- 55.00 Science (Extended)\*
- 70.00 Design
- 75.00 Science
- 75.00 Arts
- 75.00 Commerce
- 85.00 Biomedicine

\*Applicants for guaranteed entry to the Bachelor of Science (Extended) *also require a study score of 25 in at least one of:*  
*VCE unit 3/4 Biology, Chemistry, Physics, Further Mathematics, Mathematical Methods, Specialist Mathematics, or equivalent*

Even if a student's ATAR falls below these levels, they may still be considered for a place. To apply for the Access Melbourne scheme, students must make use of the *Special Entry Access Scheme (SEAS)* application on the VTAC website. There are also several *Melbourne Access scholarships* available through the University's scholarships program, so students are encouraged to browse [Melbourne Access Scholarships](#).

Visit [Access Melbourne](#) to find out more.

## **Carlton College of Sport**

*Get your foot in the door of the sports industry at the Carlton College of Sport, where you will combine your first year of tertiary study with real-world experience. A partnership between **Carlton Football Club** and **La Trobe University** – the leading university for career outcomes in sport – this unique tertiary program provides the ultimate learning experience in a high-performance environment.*

Courses on offer include:

**[Diploma of Sport Coaching and Development](#)** – this one-year course is for students interested in working on field with athletes. Subjects include a mixture of *sports and exercise science, sport coaching, talent identification, game development, sport management, human physiology, and anatomy subjects*.

Benefits are -

- ✓ Complete 100 hours of placement at the Carlton Football Club and industry partners
- ✓ 95% of graduates continue to second year tertiary study or full-time employment
- ✓ Four graduate roles offered for each cohort at the Carlton Football Club

Students who complete this diploma are able to proceed straight into the second year of a bachelor's degree. Former students have gone on to study:

- [Bachelor of Sport Coaching and Development](#)
- [Bachelor of Sport and Exercise Science](#)

**[Diploma of Elite Sport Business](#)** – this one-year course is for students interested in what happens behind the scenes of a professional sporting club, including how sport is managed, presented, and promoted. The program combines studies in a range of sport topics including management, marketing and media and is delivered at IKON Park, the home of the Carlton Football Club (six subjects) and the Melbourne campus of La Trobe University at Bundoora (two subjects).

Students who complete the Diploma of Elite Sport Business are able to proceed straight into the second year of a Bachelor of Business such as –

- [Bachelor of Business](#)
- [Bachelor of Sport Management](#)

### **Prerequisites for entry into either of these courses**

VCE: Units 3 and 4: a study score of at least 25 in English (EAL) or at least 20 in English other than EAL.

### **Admission criteria for both courses**

This course may use the ATAR as part of its selection considerations.

Applications are to be made directly to Carlton College. **To find out more, or register your interest visit [Carlton College of Sport](#).**



## YEAR 12 STUDENTS IT IS TIME TO START PREPARING YOUR U.S. COLLEGE APPLICATIONS

August 1 has arrived and that means that the U.S. university and college application sites are open for this year's applicants who will plan to start in 2022.

EducationUSA has teamed up with Common App and Meredith Lombardi, Associate Director, Outreach and Education who will provide information on how you can lodge your applications using the Common App college application platform that is used by over 900 U.S. college and universities.

Join us to learn how to better navigate the system while understanding the steps required. When registering please include any questions you would like answered - and we will do our best.



### SESSION DETAILS

**When:** Thursday August 19

**Time:** 8pm - 9pm AEST

**Virtual via zoom:** Register via the QR code or [click here](#).



### SOME ITEMS THAT WILL BE COVERED

- ✓ Navigating and using the platform
- ✓ Resources available to help you
- ✓ Applying to multiple institutions
- ✓ Managing different closing dates
- ✓ How to upload documents
- ✓ Working with your Careers Advisor and your recommenders

**IF YOU HAVE NOT ALREADY SET-UP YOUR  
COMMON APP ACCOUNT TRY TO DO SO BEFORE THE SESSION!**



## Exercise Science & Sport Degrees in Victoria in 2021

UNIVERSITY	COURSES	VCE PREREQUISITE SUBJECTS IN 2021	ATAR 2021
<a href="#">ACU</a> M - Melbourne	<b>Exercise &amp; Sport Science</b>	Units 3 and 4: a study score of at least 30 in English (EAL) or at least 25 in English other than EAL; Units 3 and 4: a study score of at least 25 in one of Biology, Chemistry, any Mathematics, Physical Education, Physics or Psychology.	<b>58.60 (M)</b>
	<b>High Performance Sport</b>	Units 3 and 4: a study score of at least 30 in English (EAL) or at least 25 in English other than EAL; Units 3 and 4: a study score of at least 25 in one of Biology, Chemistry, any Mathematics, Physical Education, Physics or Psychology	<b>58.75 (M)</b>
<a href="#">DEAKIN</a> M – Melbourne G – Geelong Waurin Ponds	<b>Business (Sport Management)</b>	Units 3 and 4: a study score of at least 25 in English (EAL) or at least 20 in English other than EAL.	<b>78.25 (M)</b>
	<b>Exercise &amp; Sport Science</b>	Units 3 and 4: a study score of at least 30 in English (EAL) or at least 25 in English other than EAL.	<b>62.20 (G)</b> <b>70.00 (M)</b>
	<b>Sport Development</b>	Units 3 and 4: a study score of at least 25 in English (EAL) or at least 20 in English other than EAL.	<b>65.25 (M)</b>
<a href="#">FEDERATION</a> Mt.H – Mt. Helen, Ballarat	<b>Exercise &amp; Sport Science</b>	Units 1 and 2: satisfactory completion in two units (any study combination) of Maths: General Mathematics, Maths: Mathematical Methods or Maths: Specialist Mathematics or Units 3 and 4: any Mathematics; Units 3 and 4: a study score of at least 20 in any English.	<b>37.05 (Mt H)</b>
<a href="#">LA TROBE</a> B – Bendigo M - Melbourne	<b>Business (Sport Development &amp; Management)</b>	Units 3 and 4: a study score of at least 25 in English (EAL) or at least 20 in English other than EAL.	<b>55.20 (B)</b>
	<b>Business (Sport Management)</b>	Units 3 and 4: a study score of at least 25 in English (EAL) or at least 20 in English other than EAL.	<b>55.10 (M)</b>
	<b>Exercise Science</b>	Units 3 and 4: a study score of at least 30 in English (EAL) or at least 25 in English other than EAL; Units 3 and 4: a study score of at least 20 in two of Biology, Chemistry, any Mathematics, Physical Education or Physics.	<b>71.55 (B)</b>
	<b>Exercise and Master Physiology</b>	Units 3 and 4: a study score of at least 30 in English (EAL) or at least 25 in English other than EAL; Units 3 and 4: a study score of at least 20 in two of Biology, Chemistry, any Mathematics, Physical Education or Physics.	<b>66.65 (B)</b>
	<b>Sport and Exercise Science</b>	Units 3 and 4: a study score of at least 30 in English (EAL) or at least 25 in English other than EAL; Units 3 and 4: a study score of at least 20 in two of Biology, Chemistry, Health And Human Development, any Mathematics, Physical Education or Physics.	<b>60.80 (M)</b>
	<b>Sport Coaching &amp; Development</b>	Exercise prescription, Health sciences, Sport and exercise physiology, Sport and exercise science, Sport coaching and development, Sport management, Sports analytics.	<b>55.15 (M)</b>
<a href="#">RMIT</a> Bu - Bundoora	<b>Exercise &amp; Sport Science</b>	Units 3 and 4: a study score of at least 30 in English (EAL) or at least 25 in English other than EAL; Units 3 and 4: a study score of at least 20 in one of Biology, Chemistry, Maths: Mathematical Methods, Maths: Specialist Mathematics, Physical Education or Physics.	<b>62.60 (Bu)</b>
<a href="#">SWINBURNE</a> H - Hawthorn	<b>Exercise and Sport Science</b>	Units 3 and 4: a study score of at least 30 in English (EAL) or at least 25 in English other than EAL; Units 3 and 4: a study score of at least 20 in any Mathematics.	<b>60.85 (H)</b>
<a href="#">VIC UNI</a> F – Footscray F/S.A – Footscray / St. Albans	<b>Biomedical &amp; Exercise Science</b>	Units 3 and 4: a study score of at least 25 in English (EAL) or at least 20 in English other than EAL; Units 3 and 4: a study score of at least 20 in two of Biology, Chemistry, Health And Human Development, any Mathematics or Physical Education.	<b>71.55 (F/ S.A)</b>
	<b>Exercise Science - Clinical Practice</b>	Units 3 and 4: a study score of at least 25 in English (EAL) or at least 20 in English other than EAL.	<b>n/a (F)</b>
	<b>Exercise Science – Sport Practice</b>		<b>62.50 (F)</b>
	<b>Sport Management</b>	Units 3 and 4: a study score of at least 25 in English (EAL) or at least 20 in English other than EAL.	<b>n/a (F)</b>
	<b>Sport Science</b>	Units 3 and 4: a study score of at least 25 in English (EAL) or at least 20 in English other than EAL.	<b>n/a (F)</b>

For a comprehensive list of courses, including double degrees, on offer at both TAFEs and universities, visit [VTAC](#).

## **Snapshot of the University of Queensland (UQ) in 2021**

- UQ is one of Australia's leading research and teaching institutions.
- UQ is consistently ranked well inside the top 50 of more than 10,000 universities worldwide - [International Rankings](#).
- UQ is located in and around Brisbane, and the university has teaching and research sites throughout Queensland, and its major campuses are at St Lucia, Gatton and Herston - [Campuses & Locations](#)
- There are six faculties at UQ, which are responsible for academic programs and decisions regarding a student's pursuit of their academic program - [Faculties](#)
- At UQ students can choose from an extensive range of undergraduate programs, many of which can be "customised" by major – and minor – fields of study. Programs are organised through schools and faculties, but sometimes a student can "mix and match" between them with electives and dual degrees - [Undergraduate Courses & Programs](#)
- UQ has a diverse student exchange program, and students can study overseas for up to one year while gaining credit towards their UQ degree. UQ has over 180 exchange partners in over 40 countries - [UQ Abroad](#)
- Students keen on learning another language can enrol in one of over 30 different language courses through UQ's Institute of Modern Languages - [Institute of Modern Languages](#)
- There are over 200 clubs and societies at UQ, all aimed at expand a student's social life, playing an important role in the UQ student experience - [Clubs and Societies](#)
- The [Employability Award](#) program is a structured program that recognises the personal and professional development a student gains from their involvement in activities above and beyond academic studies.
- UQ has a dedicated website designed for future students to find answers to all the questions they might have about studying at UQ - [UQ Answers](#)
- UQ has some excellent facilities including -
  - \* a state-of-the-art multi-purpose learning space for first-year engineering students called the Engineering Learning Centre - [First Year Engineering Learning Centre](#)
  - \* the School of Veterinary Science complex - [Veterinary Science](#)
  - \* the Pharmacy Australia Centre of Excellence (PACE) precinct which houses the School of Pharmacy - [Pharmacy](#)
- UQ has 10 residential colleges - [Accommodation](#)
- UQ offers a range of scholarship options to make university study more affordable, ranging in value up to \$12,000 per year for the VC Scholarship - [Scholarships](#)





## Inspire your most talented students

In the [2022 Course Guide](#), you can see there is much more to NIDA than actors' training.

NIDA supports talented students in any creative, design, entertainment or technical course, to discover exciting career pathways in the performing and creative arts including **stage managers, costume makers, set designers, scenic artists, set builders, make-up artists, crew members, and more!**

Applications to study at NIDA in 2022 are now open and will close:

- **30 September 2021:** for all [undergraduate](#) and [vocational](#) courses
- **31 August 2021:** Master of Fine Arts ([Directing](#)) and ([Writing for Performance](#))
- **31 August 2021:** Master of Fine Arts ([Cultural Leadership](#))

Teachers and students can register now for an [online info session](#) with our Heads of Courses to find out more.

This year there will be **NO APPLICATION FEE**, giving more people the opportunity to apply, and **over \$600,000** in [scholarships](#) will be available to our students in 2022. We want to break down barriers to ensure talented individuals all around Australia feel represented, welcomed and supported.

**We are here to help!** If you have any questions about the application or interview process, get in touch with us via email at [applications@nida.edu.au](mailto:applications@nida.edu.au)



and

find  
This



### NIDA online info sessions

Jump on an online info session and meet NIDA Course Leaders to get more information about each course and application requirements.

[Register Now](#)



### NIDA quiz

Which NIDA course is right for you? Share or do this fun quiz with your students and discover the breadth of study options at NIDA.

[Start the Quiz](#)



### NIDA Scholarships

NIDA Scholarships are open to future students (applicants) and enrolled students. Most scholarships are allocated based on financial need.

[See all Scholarships](#)



# OPEN DAY

**SATURDAY 14 AUGUST**  
**10AM-4PM**

## VIRTUAL EVENT

Want to turn your ideas into a creative career you'll love? Join us for a Virtual Open Day to find out how you can start your career in Film, 2D Animation, 3D Design, Games or Mobile App Development with our Higher Education Bachelors and Diplomas.

**REGISTER NOW**

[info.ait.edu.au/open-day-2021](http://info.ait.edu.au/open-day-2021)



