

**YOU** to the power of us

#MQOPENDAY

#YOUTOTHEPOWEROFUS

# (OPEN DAY) *us*

**17 AUGUST 2019**

[openday.mq.edu.au](http://openday.mq.edu.au)



**MACQUARIE**  
University

# Get the most out of Open Day

Did you know that studying at Macquarie will multiply your potential for success? That our campus has been specifically built for collaboration? And that our location in Australia's premier innovation hub means you can connect with future employers while you're studying? By attending lectures and talking to our staff on Open Day, you'll find out all about this and much more. While you're here, you can:

- discover why our degrees will make your dream career a reality
- learn about our amazing leadership and international exchange initiatives
- find out about our unique PACE (Professional and Community Engagement) program
- speak to our experienced academics about the degrees and units that interest you most
- explore our state-of-the-art facilities
- attend lectures on some of our most popular degrees
- find out about our unique entry options
- learn more about scholarships
- find out how you can get a head start on your career while you're studying
- discover more about our student and sport groups
- learn about our health and wellbeing services.

shuttle bus



**Need to get around our amazing campus on Open Day? Then hop on our free shuttle bus. Bus stops are at seven locations – check out the map on page 18 for more info.**

## Contents

Arts and social sciences	4
Business	5
Education	6
Engineering	7
Information technologies	8
Languages and linguistics	9
Law	10
Media, communications and performing arts	11
Medicine and health	12
Psychology and cognitive science	13
Science	14
Security, intelligence and criminology	15
General lectures and activities	16
Still got questions?	17
Open Day map	18



**\$50 gift card**

**SHARE YOUR OPEN DAY EXPERIENCE WITH US FOR A CHANCE TO WIN.**





[openday.mq.edu.au/survey](https://openday.mq.edu.au/survey)  
#mqopenday

**While on campus, use our free wifi  
PASSWORD: openday2019**

# Arts and social sciences

Ancient history | Anthropology | Archaeology | Cultural and global studies | English literature | Environment and society | Geography | Indigenous studies | International relations | Modern history | Philosophy | Politics | Sociology and social policy | Urban planning

 **Speak to an academic at the Marquee, 18 Eastern Road (map D27)**


 <b>Lectures</b> Lectures run for 30 minutes					
10.30AM	11.30AM	12.00PM	12.30PM	1.30PM	2.00PM
<div><div> Bachelor of Arts Lotus Theatre, 27 Wally's Walk (map K13)</div><div>Bachelor of Planning and Master of Planning Theatre 2, 23 Wally's Walk (map K16)</div></div>	<div>Ancient history Theatre 1, 29 Wally's Walk (map K12)</div> <div>Bachelor of Social Science Price Theatre, 23 Wally's Walk (map K16)</div> <div>Philosophy Theatre 2, 23 Wally's Walk (map K16)</div>	<div>Bachelor of Archaeology Theatre 1, 29 Wally's Walk (map K12)</div> <div>Geography, human geography and urban studies Theatre 2, 23 Wally's Walk (map K16)</div>	<div>English and creative writing Theatre 2, 23 Wally's Walk (map K16)</div> <div>Sociology Mason Theatre, 14 Sir Christopher Ondaatje Avenue (map H24)</div>	<div>Political economy Theatre 2, 23 Wally's Walk (map K16)</div>	<div><div> Bachelor of Arts Lotus Theatre, 27 Wally's Walk (map K13)</div><div>Gender studies Theatre 2, 23 Wally's Walk (map K16)</div></div>
11.00AM			1.00PM		
<div>Anthropology Rooms 110 and 120, 11 Wally's Walk (map K25)</div> <div>Modern history Theatre 2, 23 Wally's Walk (map K16)</div>			<div>Politics and international relations Theatre 1, 17 Wally's Walk (map K19)</div> <div>Tackling global challenges in social and environmental justice Active Learning Space, 21 Wally's Walk (map K17)</div>		
<div> Repeated lecture</div>					

 <b>Activities</b>		
11.00AM	12.00PM	12.30PM
<div>Ancient history museum and archaeology fieldwork labs Level 3, 29 Wally's Walk (map K12) 11am – 2pm</div> <div>Australian History Museum Level 3, 29 Wally's Walk (map K12) 11am – 2pm</div>	<div>Australian History Museum: Tour Tour departs from Level 3, 29 Wally's Walk (map K12) <i>Tour runs for 30 minutes</i></div>	<div>Ancient history museum and archaeology fieldwork laboratory: Tour Tour departs from Level 3, 29 Wally's Walk (map K12) <i>Tour runs for 60 minutes</i></div>

# Business

Accounting | Actuarial studies | Business administration | Business analytics | Commerce | Economics | Finance | Human resources | International business | Management | Marketing


 **Speak to an academic or visit the Macquarie Business School Lounge at Level 3, 18 Wally's Walk (map H19)**

 <b>Lectures</b> Lectures run for 30 minutes unless otherwise noted				
10.30AM	11.00AM	12.00PM	12.30PM	1.30PM
<div><div> Accounting + Co-op Program Theatre 4, 14 Sir Christopher Ondaatje Avenue (map H24)</div><div> Actuarial studies + Co-op Program Theatre 5, 14 Sir Christopher Ondaatje Avenue (map H24)</div><div> Economics Price Theatre, 23 Wally's Walk (map K16)</div><div>Entrepreneurship and innovation Forum, 17 Wally's Walk (map K19)</div></div>	<div><div> Bachelor of Commerce Lotus Theatre, 27 Wally's Walk (map K13)</div><div>Business analytics Theatre 1, 17 Wally's Walk (map K19)</div></div> <div><b>11.30AM</b><div><div> Marketing Macquarie Theatre, 21 Wally's Walk (map K17)</div><div>Women in economics: Industry panel Active Learning Space 21 Wally's Walk (map K17)</div><div><i>Session runs for 60 minutes</i></div></div></div>	<div><div> Studying Business at Macquarie: Macquarie Business School launch Lotus Theatre, 27 Wally's Walk (map K13)</div></div>	<div>Bachelor of Business Administration Theatre 1, 17 Wally's Walk (map K19)</div> <div>Bachelor of Marketing and Media Lotus Theatre, 27 Wally's Walk (map K13)</div> <div><div> Economics Forum, 17 Wally's Walk (map K19)</div><div>Management and leadership Theatre 2, 14 Sir Christopher Ondaatje Avenue (map H24)</div></div> <div><b>1.00PM</b><div><div>Applied finance Price Theatre, 23 Wally's Walk (map K16)</div><div>Human resources Theatre 4, 14 Sir Christopher Ondaatje Avenue (map H24)</div></div></div>	<div><div> Actuarial studies + Co-op Program Forum, 17 Wally's Walk (map K19)</div><div> Marketing Macquarie Theatre, 21 Wally's Walk (map K17)</div></div> <div><b>2.00PM</b><div><div> Accounting + Co-op Program Forum, 17 Wally's Walk (map K19)</div><div> Bachelor of Commerce Macquarie Theatre, 21 Wally's Walk (map K17)</div><div> Studying Business at Macquarie: Macquarie Business School launch Theatre 1, 17 Wally's Walk (map K19)</div></div></div>
<div> Repeated lecture</div>				

 <b>Activities</b>				
10.30AM	11.00AM	11.30AM	12.00PM	1.30PM
<div><div> MQBSuccessful: Experience business at Macquarie: Tour Tour departs from Finance Decision Lab, Level 1, 4 Eastern Road (map O27) <i>Tour runs for 60 minutes</i></div></div> <div> Repeated activity</div>	<div><div> MQBSuccessful: Experience business at Macquarie: Tour Tour departs from Finance Decision Lab, Level 1, 4 Eastern Road (map O27) <i>Tour runs for 60 minutes</i></div></div>	<div><div> MQBSuccessful: Experience business at Macquarie: Tour Tour departs from Finance Decision Lab, Level 1, 4 Eastern Road (map O27) <i>Tour runs for 60 minutes</i></div></div>	<div><div> Finance Decision Lab: Tour and interactive workshop Finance Decision Lab, Level 1, 4 Eastern Road (map O27) <i>Tour runs for 60 minutes</i></div></div>	<div><div> Finance Decision Lab: Tour and interactive workshop Finance Decision Lab, Level 1, 4 Eastern Road (map O27) <i>Tour runs for 60 minutes</i></div></div>

## Education

Early childhood education | Educational leadership | Indigenous education | Primary education | Secondary education | Special and inclusive education | Teacher professional development | Teaching English to Speakers of Other Languages

 **Speak to an academic at Foyer, Level 3, 18 Wally's Walk (map H19)**

🕒 <b>Lectures</b> Lectures run for 30 minutes		
12.30PM	1.00PM	1.30PM
<b>Early childhood education</b> Theatre 1, 29 Wally's Walk (map K12)	<b>Primary teaching</b> Theatre 1, 29 Wally's Walk (map K12)	<b>Secondary teaching</b> Theatre 1, 29 Wally's Walk (map K12)



🕒 <b>Activities</b>			
11.00AM	12.00PM	1.00PM	2.00PM
<b>Technological advancements for classroom teaching</b> Conference room A, Level 3, 18 Wally's Walk (map H19) 11am – 12pm	<b>R Mia Mia Child and Family Study Centre: Tour</b> Tour departs from 29 Wally's Walk (map K12) <i>Tour runs for 30 minutes</i>	<b>R Mia Mia Child and Family Study Centre: Tour</b> Tour departs from 29 Wally's Walk (map K12) <i>Tour runs for 30 minutes</i>	<b>R Mia Mia Child and Family Study Centre: Tour</b> Tour departs from 29 Wally's Walk (map K12) <i>Tour runs for 30 minutes</i>
<b>R</b> Repeated activity			

## Engineering

Civil and environmental engineering | Electrical engineering | Electronics engineering | Mechanical engineering | Mechatronic engineering | Software engineering

 **Speak to an academic at 14 Sir Christopher Ondaatje Avenue (map H24)**

🕒 <b>Lectures</b> Lectures run for 30 minutes				
11.00AM	11.30AM	12.00PM	1.30PM	2.00PM
<b>R Software engineering</b> Theatre 4, 14 Sir Christopher Ondaatje Avenue (map H24)	<b>R Civil engineering</b> Mason Theatre, 14 Sir Christopher Ondaatje Avenue (map H24)  <b>R Electrical and electronics engineering</b> Theatre 2, 14 Sir Christopher Ondaatje Avenue (map H24)	<b>R Mechanical and mechatronic engineering</b> Theatre 2, 14 Sir Christopher Ondaatje Avenue (map H24)	<b>R Electrical and electronics engineering</b> Theatre 4, 14 Sir Christopher Ondaatje Avenue (map H24)  <b>R Mechanical and mechatronic engineering</b> Theatre 2, 14 Sir Christopher Ondaatje Avenue (map H24)	<b>R Civil engineering</b> Mason Theatre, 14 Sir Christopher Ondaatje Avenue (map H24)  <b>R Software engineering</b> Theatre 5, 14 Sir Christopher Ondaatje Avenue (map H24)
<b>R</b> Repeated lecture				

🕒 <b>Activities</b>			
ALL DAY	10.00AM	11.30AM	1.00PM
<b>Engineering interactive zone</b> <ul style="list-style-type: none"> <li>FIRST® Robotics</li> <li>Hands-on demonstrations</li> <li>MQ Orbital</li> <li>MQ Speed</li> </ul> Corner of Wally's Walk and Eastern Road (map J26)	<b>R Engineering facilities: Tour</b> Tour departs from outside Engineering interactive zone, corner of Wally's Walk and Eastern Road (map J26). You'll be transported by bus to our engineering facilities at Waterloo Road and returned to campus on completion of the tour. <i>Tour runs for 75 minutes</i>	<b>R Engineering facilities: Tour</b> Tour departs from outside Engineering interactive zone, corner of Wally's Walk and Eastern Road (map J26). You'll be transported by bus to our engineering facilities at Waterloo Road and returned to campus on completion of the tour. <i>Tour runs for 75 minutes</i>	<b>R Engineering facilities: Tour</b> Tour departs from outside Engineering interactive zone, corner of Wally's Walk and Eastern Road (map J26). You'll be transported by bus to our engineering facilities at Waterloo Road and returned to campus on completion of the tour. <i>Tour runs for 75 minutes</i>
<b>R</b> Repeated activity			





## Law

Commercial law | Criminal law | Environmental law | Governance |  
Human rights and social justice | International law | Law and the media | Public policy and law



**Speak to an academic at the Marquee, 18 Eastern Road (map D27)**

🕒 <b>Lectures</b> Lectures run for 30 minutes	
12.00PM	1.30PM
<b>R</b> Bachelor of Laws Macquarie Theatre, 21 Wally's Walk (map K17)	<b>R</b> Bachelor of Laws Lotus Theatre, 27 Wally's Walk (map K13)
<b>R</b> Repeated lecture	



A new purpose-designed Macquarie Law School building will open in 2022. The Michael Kirby Building – named in honour of The Hon Michael Kirby AC CMG, former Justice of the High Court of Australia and former Macquarie University Chancellor – will provide unparalleled facilities for contemporary modes of learning and teaching.

🕒 <b>Activities</b>	
11.00AM	1.00PM
A day in the life of a law student Rooms 170 and 180, 11 Wally's Walk (map K25) 11am – 11.30am	Law Society activity: Witness examination Rooms 170 and 180, 11 Wally's Walk (map K25) 1pm – 1.30pm

## Media, communications and performing arts

Communications | Creative writing | Dance and performance | Film | Interactive Design |  
International communications | Journalism | Media and society | Music | Screen production |  
Social media | Sound production



**Speak to an academic at the Marquee, 18 Eastern Road (map D27)**

🕒 **Lectures** Lectures run for 30 minutes

11.00AM	11.30AM	12.00PM	1.30PM	2.00PM
Bachelor of Music Theatre 1, 10 Hadenfeld Avenue (map Q7)	<b>R</b> Bachelor of Media and Communications Theatre 1, 10 Hadenfeld Avenue (map Q7)	Creative arts Theatre 1, 10 Hadenfeld Avenue (map Q7)	<b>R</b> Bachelor of Media and Communications Theatre 1, 10 Hadenfeld Avenue (map Q7)	Communication, culture and society Theatre 1, 10 Hadenfeld Avenue (map Q7)
		<b>12.30PM</b> Bachelor of Marketing and Media Lotus Theatre, 27 Wally's Walk (map K13)		
<b>R</b> Repeated lecture				

🕒 <b>Activities</b>
TOUR
<b>R</b> Media and performing arts studios and facilities: Tour Tour departs from Foyer, 10 Hadenfeld Avenue (map Q7) 11am, 11.30am, 12pm, 12.30pm, 1.30pm, 2pm, 2.30pm <i>Tour runs for 30 minutes</i>
<b>R</b> Repeated activity



# Medicine and health

Chiropractic | Community services | Human sciences | Medical sciences | Medicine |  
Physiotherapy | Public health | Speech and hearing

 **Speak to an academic at 14 Sir Christopher Ondaatje Avenue (map H24)**

🕒 <b>Lectures</b> Lectures run for 30 minutes				
10.30AM	11.00AM	12.30PM	1.30PM	2.00PM
<p><b>R</b> Bachelor of Human Sciences Theatre 1, 29 Wally's Walk (map K12)</p> <p><b>R</b> Bachelor of Clinical Science: Careers in medicine and health Macquarie Theatre, 21 Wally's Walk (map K17)</p> <p><b>R</b> Chiropractic science Theatrette 100, 14 Sir Christopher Ondaatje Avenue (map H24)</p>	<p><b>R</b> Bachelor of Medical Sciences and human biology Mason Theatre, 14 Sir Christopher Ondaatje Avenue (map H24)</p> <p>Postgraduate: Doctor of Medicine, Doctor of Physiotherapy, Master of Public Health Macquarie Theatre, 21 Wally's Walk (map K17)</p>	<p>Bachelor of Speech and Hearing Sciences Price Theatre, 23 Wally's Walk (map K16)</p> <p><b>R</b> Bachelor of Clinical Science: Careers in medicine and health Macquarie Theatre, 21 Wally's Walk (map K17)</p>	<p><b>R</b> Bachelor of Medical Sciences and human biology Mason Theatre, 14 Sir Christopher Ondaatje Avenue (map H24)</p>	<p><b>R</b> Bachelor of Human Sciences Theatre 1, 29 Wally's Walk (map K12)</p>
<b>1.00PM</b>				
<p><b>R</b> Chiropractic science Theatrette 100, 14 Sir Christopher Ondaatje Avenue (map H24)</p>				
<b>R</b> Repeated lecture				

🕒 <b>Activities</b>			
ALL DAY	TOUR	TOUR	TOUR
<p><b>Hearing awareness: How to achieve optimum hearing health</b> Room 163, 14 Sir Christopher Ondaatje Avenue (map H24)</p> <p><b>Hearing awareness: Screening tests</b> Forecourt, 18 Wally's Walk (map H19)</p> <p><b>MQ Health activities</b> Room 163, 14 Sir Christopher Ondaatje Avenue (map H24)</p> <p><b>Wonders of the human body</b> Science interactive zone, Atrium, 12 Wally's Walk (map J24)</p>	<p><b>R</b> Anechoic Chamber, MQ Health Speech and Hearing Clinic and 3D Printing: Tour Tour departs from Room 163, 14 Sir Christopher Ondaatje Avenue (map H24) 10.30am, 11.30am, 12.30pm Tour runs for 45 minutes</p>	<p><b>R</b> Medicine and health sciences facilities: Tour Tour departs from corner of Wally's Walk and Eastern Road (map J26) 11.15am, 11.45am, 1.15pm Tour runs for 30 minutes</p>	<p><b>R</b> Chiropractic lab: Tour Tour departs from outside Theatrette 100, 14 Sir Christopher Ondaatje Avenue (map H24) 11am, 1.30pm Tour runs for 30 minutes</p>
<b>R</b> Repeated activity			

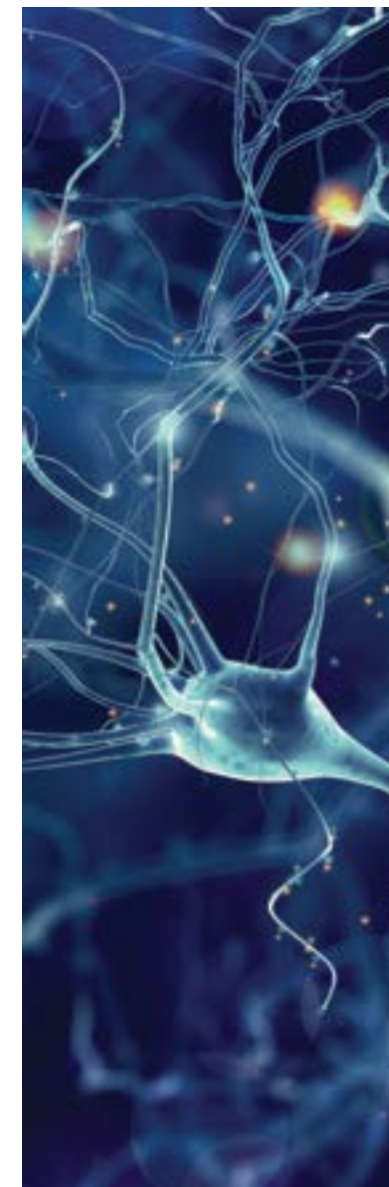
# Psychology and cognitive science

Cognitive and brain sciences | Psychology

 **Speak to an academic at 14 Sir Christopher Ondaatje Avenue (map H24)**

🕒 <b>Lectures</b> Lectures run for 30 minutes		
11.30AM	1.00PM	1.30PM
<p><b>R</b> Psychology Lotus Theatre, 27 Wally's Walk (map K13)</p>	<p><b>R</b> Psychology Macquarie Theatre, 21 Wally's Walk (map K17)</p>	<p>Bachelor of Cognitive and Brain Sciences Theatre 1, 17 Wally's Walk (map K19)</p> <p>Postgraduate: Psychology Active Learning Space 21 Wally's Walk (map K17)</p>
<b>R</b> Repeated lecture		

🕒 <b>Activities</b>	
ALL DAY	TOUR
<p>Cognitive and brain sciences: Virtual reality and the brain Room 163, 14 Sir Christopher Ondaatje Avenue (map H24)</p> <p>Psychology activities centre Room 318, 12 Second Way (map M18)</p>	<p><b>R</b> Simulation Hub: Tour Tour departs from corner of Wally's Walk and Eastern Road (map J26). You'll be transported by shuttle bus to the Simulation Hub at 10 Hadenfeld Avenue. 10.30am, 11am, 11.30am, 12pm, 12.30pm, 1.30pm, 2pm Tour runs for 30 minutes</p>
<b>R</b> Repeated activity	



# Science

Astronomy and astrophysics | Biological sciences | Biotechnology | Chemistry | Conservation, marine biology and sustainability | Earth and environmental sciences | Mathematics and statistics | Molecular sciences | Palaeobiology | Physics

 **Speak to an academic at 14 Sir Christopher Ondaatje Avenue (map H24)**

🕒 Lectures Lectures run for 30 minutes unless otherwise noted				
10.30AM	11.30AM	12.00PM	12.30PM	2.00PM
<b>R</b> Bachelor of Science Theatre 2, 14 Sir Christopher Ondaatje Avenue (map H24)	<b>R</b> Bachelor of Marine Science Theatrette 100, 14 Sir Christopher Ondaatje Avenue (map H24)	<b>R</b> Bachelor of Advanced Science Theatrette 100, 14 Sir Christopher Ondaatje Avenue (map H24)	<b>R</b> Biology and paleobiology Theatre 5, 14 Sir Christopher Ondaatje Avenue (map H24)	<b>R</b> Bachelor of Marine Science Theatrette 100, 14 Sir Christopher Ondaatje Avenue (map H24)
11.00AM	Chemistry and biomolecular sciences Theatre 4, 14 Sir Christopher Ondaatje Avenue (map H24)	Bachelor of Biodiversity and Conservation Theatre 4, 14 Sir Christopher Ondaatje Avenue (map H24)	Geology and earth sciences Theatrette 100, 14 Sir Christopher Ondaatje Avenue (map H24)	<b>R</b> Biology and paleobiology Theatre 4, 14 Sir Christopher Ondaatje Avenue (map H24)
<b>R</b> Bachelor of Advanced Science Theatrette 100, 14 Sir Christopher Ondaatje Avenue (map H24)	Statistics, mathematics and Bachelor of Mathematical Sciences Theatre 5, 14 Sir Christopher Ondaatje Avenue (map H24)	Physics and chemistry live show Theatre 3, 14 Sir Christopher Ondaatje Avenue (map H24) <i>Session runs for 60 minutes</i>	1.00PM	<b>R</b> Repeated lecture
<b>R</b> Environmental sciences Theatre 2, 14 Sir Christopher Ondaatje Avenue (map H24)			<b>R</b> Bachelor of Science Theatre 2, 14 Sir Christopher Ondaatje Avenue (map H24)	
Physics and astronomy Theatre 5, 14 Sir Christopher Ondaatje Avenue (map H24)			<b>R</b> Environmental sciences Theatre 4, 14 Sir Christopher Ondaatje Avenue (map H24)	

🕒 Activities				
ALL DAY	TOUR	TOUR	TOUR	TOUR
Science interactive zone <ul style="list-style-type: none"><li>Be rocked by geoscience</li><li>GeoQuest challenge</li><li>Get down and dirty with environmental science</li><li>Maths and stats in action</li><li>Reactions and solutions the molecular sciences way</li><li>Spotlight on physics and astronomy</li><li>World of biology</li></ul> Atrium, 12 Wally's Walk (map J24)	<b>R</b> Biological sciences lab: Tour 12.30pm: Tour departs from outside Theatre 4, 14 Sir Christopher Ondaatje Avenue (map H24) 1pm: Tour departs from outside Theatre 5, 14 Sir Christopher Ondaatje Avenue (map H24) <i>Tour runs for 30 minutes</i>	<b>R</b> Chemistry and biomolecular sciences lab: Tour 12pm: Tour departs from outside Theatre 4, 14 Sir Christopher Ondaatje Avenue (map H24) 1pm: Tour departs from outside Theatre 3, 14 Sir Christopher Ondaatje Avenue (map H24) <i>Tour runs for 30 minutes</i>	Earth and environmental sciences lab: Tour 1pm: Tour departs from outside Theatrette 100, 14 Sir Christopher Ondaatje Avenue (map H24) <i>Tour runs for 30 minutes</i>	<b>R</b> Physics and astronomy lab: Tour 11.30am: Tour departs from outside Theatre 5, 14 Sir Christopher Ondaatje Avenue (map H24) 1pm: Tour departs from outside Theatre 3, 14 Sir Christopher Ondaatje Avenue (map H24) <i>Tour runs for 30 minutes</i>
				<b>R</b> Repeated activity

# Security, intelligence and criminology

Counterterrorism | Criminology | Cybersecurity analysis | Intelligence | Security, strategic and defence studies

 **Speak to an academic at the Marquee, 18 Eastern Road (map D27)**

🕒 Lectures Lectures run for 30 minutes			
11.00AM	11.30AM	1.00PM	2.00PM
<b>R</b> Criminology Theatre 1, 29 Wally's Walk (map K12)	<b>R</b> Bachelor of Security Studies Theatre 1, 17 Wally's Walk (map K19)	<b>R</b> Bachelor of Security Studies Theatre 2, 23 Wally's Walk (map K16)	<b>R</b> Criminology Price Theatre, 23 Wally's Walk (map K16)
<b>R</b> Repeated lecture			

🕒 Activities
12.00PM
Meet the students: Simulation in security studies and criminology Rooms 170 and 180, 11 Wally's Walk (map K25) 12pm – 1pm





# General lectures and activities

Find out about our entry and pathway programs, scholarships, recognition of prior learning, how you apply and what studying at Macquarie is like. Also learn valuable HSC tips and tricks, and how to study without stress.

 <b>Lectures</b> Lectures run for 30 minutes				
10.30AM	11.30AM	12.00PM	1.00PM	1.30PM
<div><div><div></div></div><div><b>R</b> Macquarie and (You)<sup>us</sup> Theatre 1, 17 Wally's Walk (map K19)</div></div> <div><div><div></div></div><div><b>R</b> Undergraduate scholarships Rooms 110 and 120, 11 Wally's Walk (map K25)</div></div>	<div><div><div></div></div><div><b>R</b> Applying through UAC: What you need to know Rooms 110 and 120, 11 Wally's Walk (map K25)</div></div> <div><div><div></div></div><div><b>HSC Live: HSC exam tips and strategies</b> Rooms 170 and 180, 11 Wally's Walk (map K25)</div></div>	<div><div><div></div></div><div>Applying as a mature-age student Forum, 17 Wally's Walk (map K19)</div></div> <div><div><div></div></div><div>Study without stress Theatre 1, 17 Wally's Walk (map K19)</div></div>	<div><div><div></div></div><div><b>R</b> Macquarie and (You)<sup>us</sup> Lotus Theatre, 27 Wally's Walk (map K13)</div></div> <div><div><div></div></div><div><b>R</b> Undergraduate scholarships Rooms 110 and 120, 11 Wally's Walk (map K25)</div></div>	<div><div><div></div></div><div><b>R</b> Applying through UAC: What you need to know Rooms 110 and 120, 11 Wally's Walk (map K25)</div></div> <div><div><div></div></div><div><b>HSC Live: Five secrets to HSC success</b> Rooms 170 and 180, 11 Wally's Walk (map K25)</div></div>
11.00AM	<div><div><div></div></div><div><b>R</b> Your pathway to a degree: Diploma, Foundation and Intensive Programs Rooms G22 and G23, 8 Sir Christopher Ondaatje Avenue (map M24)</div></div>	12.30PM	<div><div><div></div></div><div><b>R</b> Macquarie Entry: Explore your entry options Price Theatre, 23 Wally's Walk (map K16)</div></div> <div><div><div></div></div><div><b>R</b> Your pathway to a degree: Diploma, Foundation and Intensive Programs Rooms G22 and G23, 8 Sir Christopher Ondaatje Avenue (map M24)</div></div>	<div><div><div></div></div><div><b>R</b> Macquarie Entry: Explore your entry options Price Theatre, 23 Wally's Walk (map K16)</div></div> <div><div><div></div></div><div><b>R</b> Your pathway to a degree: Diploma, Foundation and Intensive Programs Rooms G22 and G23, 8 Sir Christopher Ondaatje Avenue (map M24)</div></div>
<div><div><div></div></div><div><b>R</b> Macquarie Entry: Explore your entry options Price Theatre, 23 Wally's Walk (map K16)</div></div> <div><div><div></div></div><div><b>R</b> Parent information session Forum, 17 Wally's Walk (map K19)</div></div>	<div><div><div></div></div><div><b>R</b> Parent information session Rooms 110 and 120, 11 Wally's Walk (map K25)</div></div> <div><div><div></div></div><div>Recognition of Prior Learning (RPL): What you need to know Forum, 17 Wally's Walk (map K19)</div></div>			
<div><div><div></div></div><div><b>R</b> Repeated lecture</div></div>				

🕒 Activities			
ALL DAY	TOUR	TOUR	TOUR
<div><div><div></div></div><div>Art Gallery 19 Eastern Road (map B25)</div></div> <div><div><div></div></div><div>Sport and Aquatic Centre 10 Gymnasium Road (map C13)</div></div> <div><div><div></div></div><div>Numeracy Centre Room 188, 12 Wally's Walk (map J24)</div></div> <div><div><div></div></div><div>Macquarie University Sport and sports clubs Forecourt, 18 Wally's Walk (map H19)</div></div> <div><div><div></div></div><div>Student groups Corner of Wally's Walk and Sir Christopher Ondaatje (map K23)</div></div>	<div><div><div></div></div><div>Macquarie campus: Tour Forecourt, 18 Wally's Walk (map H19) 10am – 3pm <i>Tours run every 30 minutes</i></div></div>	<div><div><div></div></div><div>See the library's book-fetching robots in action: Tour Library, 16 Macquarie Walk (map O21) 11am – 2pm <i>Tours run every 10 minutes</i></div></div>	<div><div><div></div></div><div>Macquarie University pathway college: Tour Tour departs from Room G22, 8 Sir Christopher Ondaatje Avenue (map M24) 12pm and 2pm <i>Tour runs for 30 minutes</i></div></div> <div><div><div></div></div><div>Repeated activity</div></div>

# Still got questions?

As well as attending lectures and talking to academics about degrees and majors, you can find out about accommodation, student and sport groups, wellbeing services and much more.

## STUDENT SERVICES

Once you're a student, Student Connect will be your first point of contact. We offer administration services designed to answer a huge range of student enquiries, and we support many of the processes or services you might need to access while at Macquarie.

**Foyer, Level 2, 18 Wally's Walk (map H19)**

## STUDENT WELLBEING

Uni can be life-changing, but it can also be challenging, so we offer a suite of health and wellbeing services. Speak to our staff for tailored advice.

**Level 2, 18 Wally's Walk (map H19)**

## STUDENT GROUPS

Student groups are a great way to connect with people and experience different cultures. Speak to us about our many and varied groups and find your perfect fit.

**Corner of Wally's Walk and Sir Christopher Ondaatje (map K23)**

## ACCOMMODATION

Looking for an all-inclusive housing option, a private studio, great housemates to share your uni experience with or something private and off campus? Speak to us about finding the perfect home while you study.

**Forecourt, 18 Wally's Walk (map H19)**

## MACQUARIE UNIVERSITY SPORT AND SPORT CLUBS

Find out about our fantastic facilities – some of the best university facilities in the country – as well as about our social sports, sport scholarships and partnerships.

**Forecourt, 18 Wally's Walk (map H19)**

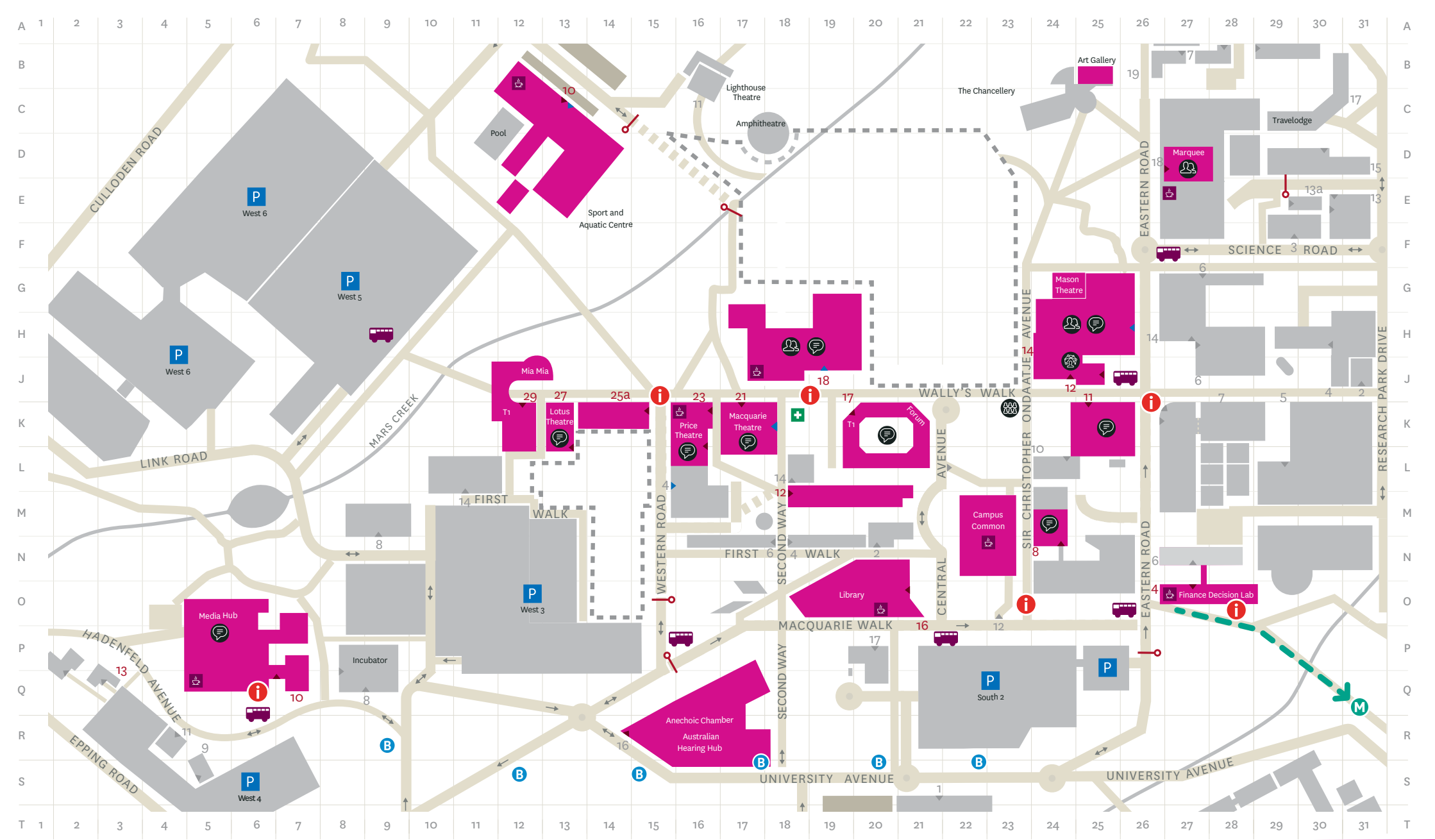
## HSC LIVE

In partnership with Macquarie, HSC Live is running interactive workshops – hosted by senior HSC teachers and markers – in the October school holidays. Come and talk to us for more information.

**Forecourt, 18 Wally's Walk (map H19)**

## COME AND SPEAK TO OUR FRIENDLY STAFF ANYTIME BETWEEN 10AM AND 3PM

18 WALLY'S WALK (MAP H19), 10AM – 3PM	
LEVEL 2	LEVEL 3
• Applying and enrolling	• Aboriginal and Torres Strait Islander Entry Pathway
• Careers	• Diploma, foundation and intensive programs
• Domestic fees and scholarships	• Entry programs
• Exchange and Study Abroad	• Macquarie Leaders and Achievers Early Entry Scheme
• Global and leadership opportunities	• Next Step and Open Universities Australia pathways
• Industry experience opportunities	FORECOURT
• International student enquiries	• UAC advising



- |   |  |  |   |
|---|--|--|---|
|  <b>ADVISING VENUE</b>   |  <b>INTERACTIVE ZONES: ENGINEERING, INFORMATION TECHNOLOGIES, MQ HEALTH AND SCIENCE</b> |  <b>FOOD AND DRINK</b>    |  <b>PARKING</b>                            |
|  <b>LECTURE VENUE</b>    |  <b>STUDENT GROUPS</b>  |  <b>FIRST AID</b>         |  <b>MACQUARIE UNIVERSITY METRO STATION</b> |
|  <b>OPEN DAY VENUE</b>   |  <b>OPEN DAY SHUTTLE BUS STOP</b>   |  <b>FRONT DOOR</b>        |  <b>BUS STOP</b>                           |
|  <b>INFORMATION TENT</b> |  |  <b>ACCESSIBLE ACCESS</b> |  <b>BOOM GATE, RESTRICTED ACCESS</b>       |

Macquarie University  
North Ryde NSW 2109  
**T:** (02) 9850 6767  
**[mq.edu.au](http://mq.edu.au)**



**MACQUARIE**  
University

When your potential is multiplied by  
a university built for collaboration,  
anything can be achieved.

*That's **YOU** to the power of us*