



Student payments from Centrelink

Centrelink has payments if you're studying after secondary school.

Youth Allowance for students and Australian Apprentices is for people studying an approved course full time at an approved provider. For example, a course at a university or TAFE or an Australian Apprenticeship. Most people become eligible once they start study after secondary school, or turn 18. Some people can get it from the age of 16, depending on their circumstances.

ABSTUDY is a group of payments for Aboriginal and Torres Strait Islander students and Australian Apprentices. There are payments for tertiary students as well as secondary students.

How much you can get

Some things that affect if you can get a payment, and how much, are:

- your age
- your parents' income
- if you rent
- how much you earn
- if you have a partner or children.

Use the **Payment and Service Finder** to find out how much your fortnightly payment might be.

Dependent or independent

If you're 21 or younger, we consider you dependent. This means your parents' income may impact your payment.

You automatically become independent when you turn 22. We may consider you independent earlier if you meet certain criteria. For example:

- you've supported yourself through work
- you've been living in a de facto relationship for at least 12 months.


Moving from a regional or remote area

We have extra payments for students who move from regional and rural areas for higher study. These include up to \$5,000 to go towards the cost of moving.

Find a list of payments at servicesaustralia.gov.au/studentpayments

Questions?

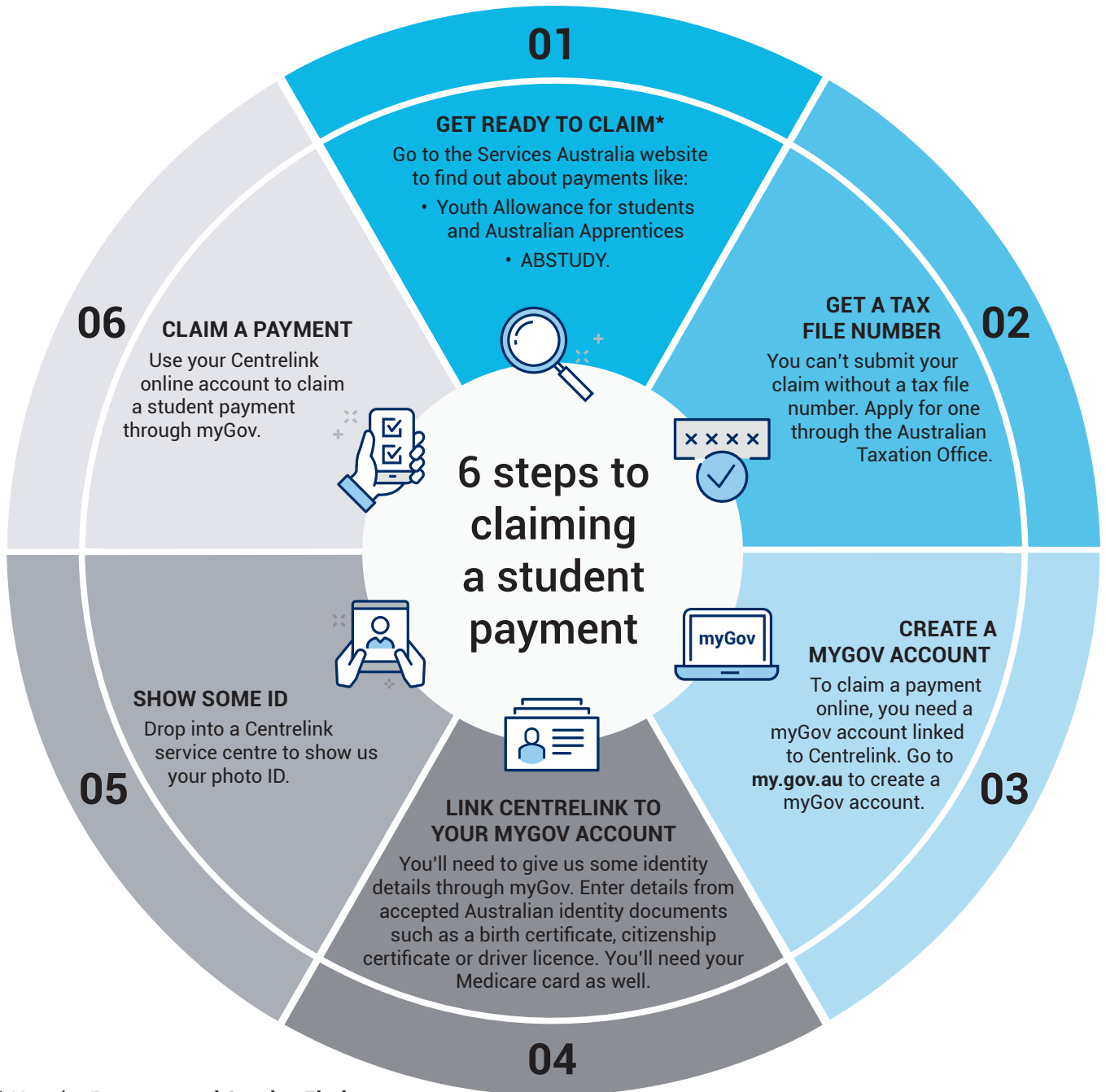
 find more useful information at servicesaustralia.gov.au/leavingschool

 call the Youth and students line on **132 490** or the ABSTUDY line on **Freecall™ 1800 132 317**

 ask us at facebook.com/servicesaustralia

 visit a Service Centre

Start early so you can have your payment when you need it. Claim a student payment up to 13 weeks before your course starts.



* Use the **Payment and Service Finder** to check if you can get one of these or if another payment is right for you.

Claim early! Lots of students apply at the beginning of the year which can make payments slower to process.