

27 October 2022

Dear families and students,

## Hall Road Upgrade – Evans Road closure

**We're upgrading Hall Road between McCormicks and Cranbourne-Frankston roads to ease congestion and make your journey safer and more reliable.**

As part of the project, we'll realign the intersections of Hall, Evans and Cranbourne-Frankston roads to create a single, safer and more efficient intersection. You can view an artist's impression of the upgraded intersection on our website at [bigbuild.vic.gov.au/projects/mrpv/hall-road-upgrade](http://bigbuild.vic.gov.au/projects/mrpv/hall-road-upgrade).

### What we'll do and when

On 6 November, we'll start work to upgrade Evans Road between Strathlea Drive and Hall Road. We'll:

- excavate and bring in materials to build Evans Road up to the new intersection levels
- install drainage
- relocate utility services
- widen the road to build the extra lanes
- build new kerbs and centre medians
- install public lighting.

To complete these works safely, we'll close Evans Road between Strathlea Drive and Hall Road from **6 November 2022 until mid-2023**. Detours will be in place via Strathlea Drive and Banyan Drive.

Navarre Road will also be closed at Hall Road during this time, with access via Elandra Way.

There will also be changes to the way you walk around in the area. Existing pedestrian access along Evans, Hall and Cranbourne-Frankston roads will be closed until mid-2023. Temporary pedestrian access will be provided via local roads including Strathlea Drive, Banyan Drive and Verve Circuit. Please refer to the detour maps over the page.

We'll mostly **work Monday to Friday from 7am to 6pm and Saturdays from 7am to 1pm** (subject to weather conditions).

We'll work at night from **6pm to 6am on Sunday 6 November** to install barriers and detour signage, in preparation for the closure.

We may need to carry our further night works between 6pm to 6am at times. If we do, we'll let you know in advance.

We may need to work at night between 7pm to 6am at times. If we do, we'll let you know in advance.



## What to expect

These works are expected to generate a low to medium level of noise, such as noise from the reversing beepers of our vehicles, equipment, and workers on site. We'll monitor noise from the works to ensure that impacts to local residents and businesses are minimised as much as possible.

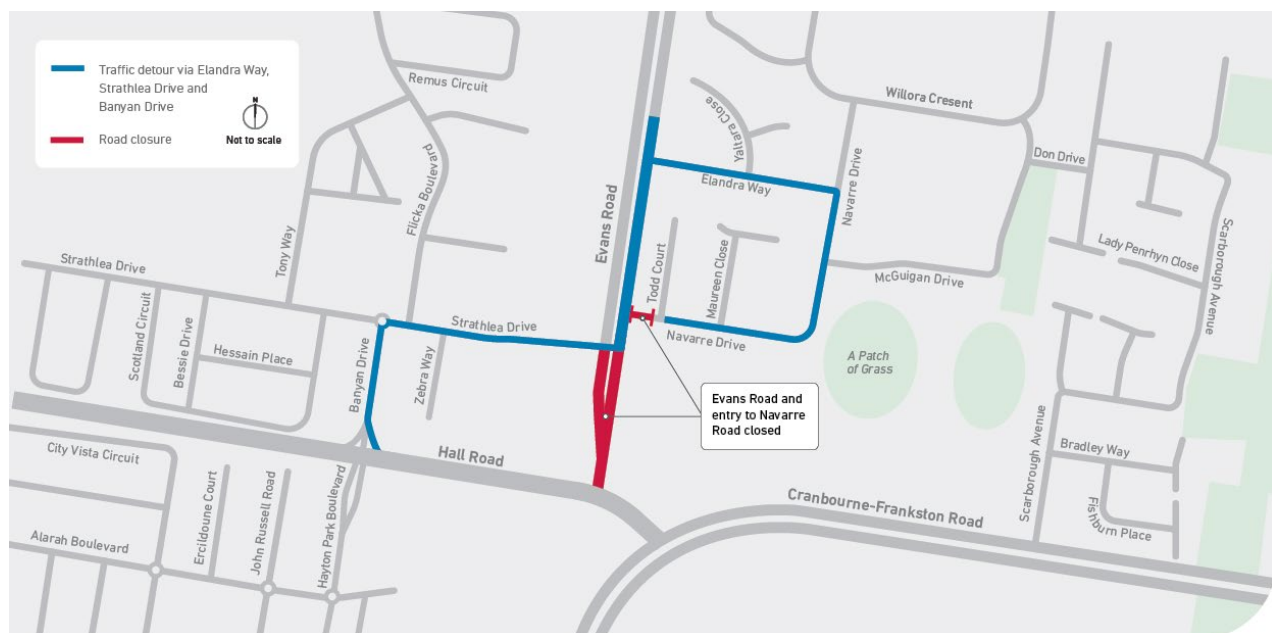
During works, there may be temporary interruptions to utility services. Service providers will be in touch regarding any disruptions to utilities ahead of time.

In preparation for these works, the bus stop at Navarre Drive and Evans Road has been relocated further north. There will be no impact to the 792 and 982 bus services.

There will be occasional changes in traffic conditions and speed limits in place around the works area. Please observe all traffic signage and allow extra time as you travel safely through the area.

To build the new intersection we'll need to raise the level of Evans Road. Once Evans Road is rebuilt, it will be more than 1.5 meters higher than the existing Hall Road. So we'll need to keep Evans Road closed until the new intersection is complete in mid-2023.

### Evans Road detour map



Please contact us if you would like this information in an accessible format

If you need assistance because of a hearing or speech impairment, please visit [relayservice.gov.au](https://relayservice.gov.au)



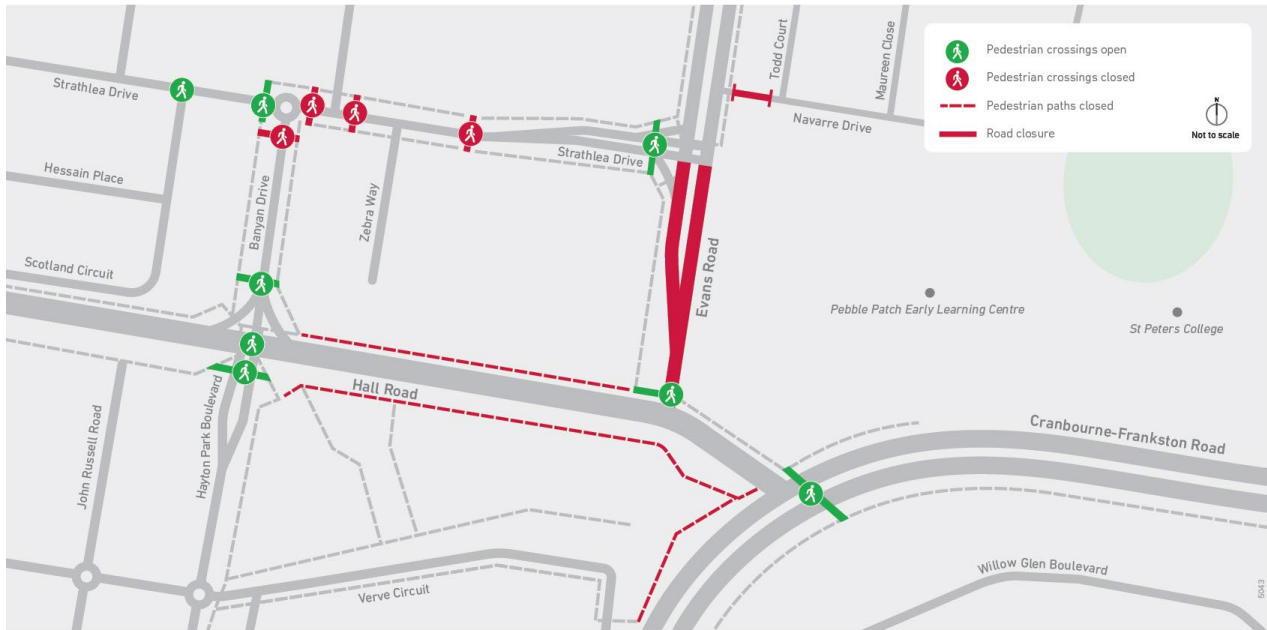
For languages other than English, please call 9209 0147

[roadprojects.vic.gov.au](https://roadprojects.vic.gov.au)  
[contact@roadprojects.vic.gov.au](mailto:contact@roadprojects.vic.gov.au)  
1800 105 105

[f](#) [t](#) [i](#) [v](#) [i](#) [n](#) @roadprojectsvic

Major Road Projects Victoria  
GPO Box 4509, Melbourne VIC 3001

## Evans Road pedestrian map



## For more information

For more information about the Hall Road Upgrade, please contact us on **1800 105 105** or email [contact@roadprojects.vic.gov.au](mailto:contact@roadprojects.vic.gov.au).

You can also sign up to receive project updates directly via email and SMS by visiting [roadprojects.vic.gov.au/subscribe](https://roadprojects.vic.gov.au/subscribe).

Regards,  
Hall Road Upgrade project team

**Major Road Projects Victoria**

Please contact us if you would like this information in an accessible format

If you need assistance because of a hearing or speech impairment, please visit [relayservice.gov.au](https://relayservice.gov.au)



For languages other than English, please call 9209 0147

[roadprojects.vic.gov.au](https://roadprojects.vic.gov.au)  
[contact@roadprojects.vic.gov.au](mailto:contact@roadprojects.vic.gov.au)  
1800 105 105

     @roadprojectsvic

Major Road Projects Victoria  
GPO Box 4509, Melbourne VIC 3001