

AN UPDATE FROM THE PRINCIPAL

OUR NEW CITY CAMPUS

SUCCESS ON EVERY LEVEL



ST GEORGE'S
ANGLICAN GRAMMAR SCHOOL

A SCHOOL OF THE ANGLICAN
SCHOOLS COMMISSION (INC)





From the Principal - 441 Murray Street Update

Dear St George's Anglican Grammar School Parents, Guardians and Carers,

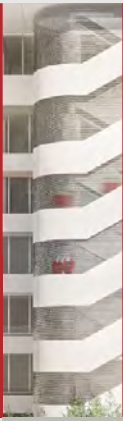
It is with much excitement that I write to advise we have now received confirmation that the transition to our new site at 441 Murray Street will commence from the beginning of Semester Two 2025 for all St George's students.

One of Australia's largest and most trusted private construction groups, Built, has been formally appointed by the CEO of the Anglican Schools Commission, The Reverend Peter Laurence OAM, to manage the construction, fit out and refurbishment phases of the build.

The state-of-the-art vertical campus - just a short 700m from our current site - will house St George's Anglican Grammar School, the Anglican Schools Commission corporate office and the Anglican Schools Commission International School.

The construction and refurbishment of our new campus will be undertaken in two distinct stages and will cater for the growth of our school, providing sophisticated new spaces and outstanding learning opportunities from the start of Semester Two 2025.

STAGE ←



COMPLETION BY SEMESTER TWO 2025



Mathematics and Science

The first stage of the transition to the new site will see our Mathematics Department relocate to 441 Murray Street. We will also operate from five spacious state-of-the-art new Science Laboratories. Each laboratory will be connected to a fully fitted Laboratory Preparation Area to cater for our incredible new range of Science electives and Science subjects across Years 7-12.



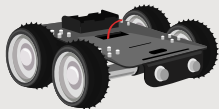
Performing Arts

We will access a new Performing Arts Centre, including a new Drama Studio, Dance Studio and open performance spaces, allowing us to further expand our diverse Performing Arts Curriculum. Our new site will also include a recording studio interconnected to eight music practice rooms and several classroom spaces dedicated to the ever-increasing needs of our Performing Arts Department. This area will ultimately allow us to host performances within the School as well as continue to be out and about in the city, just as we are now.



Cafeteria

A fully operational canteen floor will be located on Level 2 of the Stage One build, with a large outside terrace that will enable St George's students to relax and unwind in the outdoors during recess and lunchtime.



New Electives: Food Technology, Woodwork, Mechatronics

We can't wait to see the new Food Technology, Woodwork and Mechatronics suites and our aim is to develop a range of new elective opportunities for our students inside these new learning areas from the beginning of 2026.

Four Streams in Year 7 by 2025

Stage One will see St George's Anglican Grammar School take occupancy of six floors of the 441 Murray Street campus while retaining our use of 50 William Street. This additional space will allow us to expand to four streams in Year 7 from the beginning of 2025.



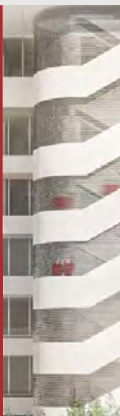
Taking What We Love

441 Murray Street has been designed by Hassell Architects to maintain the features of St George's Anglican Grammar School that we already love, such as the contemporary glass-styled classrooms, the variety of spill-out spaces on each floor that provide essential choice to our students linked to their learning needs, as well as the colourful lockers which add such vibrancy to the layout of each floor.

Easier and Breezier

The new facility will give us the opportunity however to offer much more outside space to our students, with a variety of dedicated outdoor areas. Students will also experience an easier transition between each of the floors as there will be three large student lifts, as well as a wide staircase between each of the school floors.

STAGE
2



COMPLETION BY TERM 1, 2030

Sports Facilities, Rooftop Terrace, Library

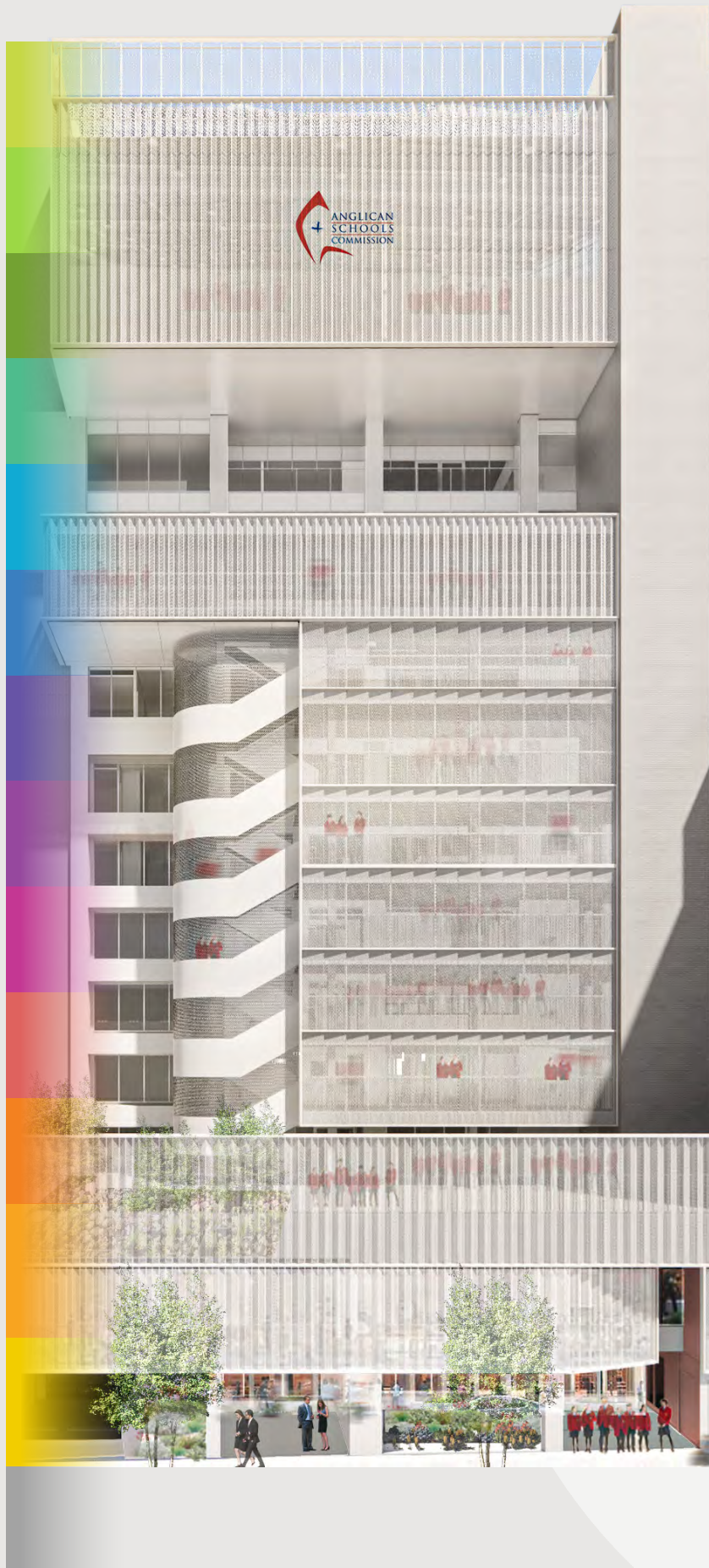
Stage Two will include a library on the ground floor with a rear-terraced garden and courtyard. Our second stage will also deliver a double storey gymnasium with a basketball court and seated viewing gallery, an adjacent rock climbing wall, fully equipped fitness centre and an architecturally designed rooftop terrace. These incredible features will complete our build and be available to the School as we move to 441 Murray Street as a single campus from the start of 2030.

Success on Every Level

STAGE 2 - 2030

STAGE 1 - 2025

- 12 Rooftop Terrace
Ball Sports Area
- 11 Double storey Gymnasium with full-sized Basketball Court and Viewing Gallery
- 10 Multiple Changerooms
Rock Climbing Walls
Fitness Centre
- 9 Laurence Library Extension
Extra Classrooms
Art, Design and Textiles Centre
- 8
- 7 Anglican Schools Commission Corporate Offices
- 6
- 5 Anglican Schools Commission International School
- 4 Five state-of-the-art Science Laboratories connected to a Laboratory Preparation Area
- 3 Five Mathematics Classrooms
A classroom-sized Chapel off the Pastoral Care Lounge
- 2 School Café with Outdoor Terrace
- 1 Performing Arts Centre - Drama Studio, Dance Studio, Recording Studio, eight Music Rooms, Performance Area and Reception
Food Technology Centre
- GROUND**
Reception
Terraced Garden and Courtyard
Laurence Library
Three large Student Lifts
- LOWER GROUND**
Woodwork and Mechatronics



SUCCESS ON EVERY LEVEL

5

“We are taking everything we love about St George’s but improving our facilities and opportunities for the future”

Tina Campbell, Principal of St George’s Anglican Grammar School

Onwards and Upwards

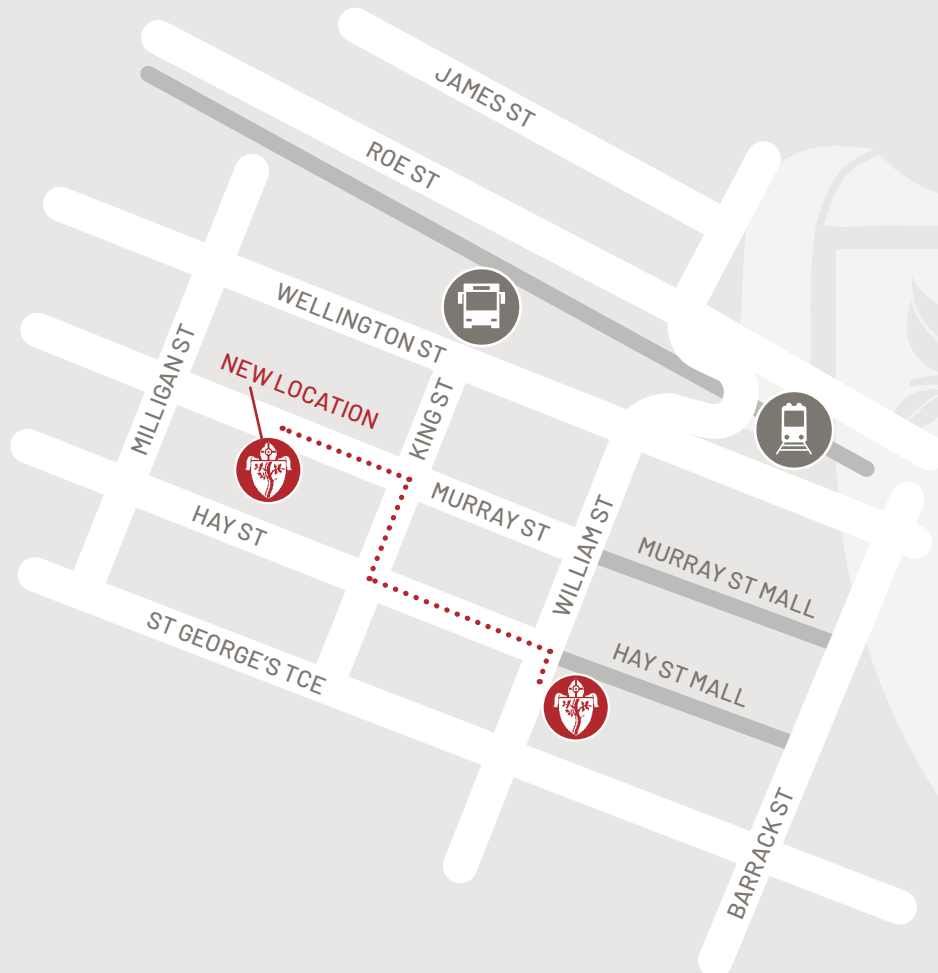
441 Murray Street will provide St George’s Anglican Grammar School with a beautiful new permanent home in the centre of the City of Perth. From 2025 we will be based across two campuses - at 50 William Street and 441 Murray Street. From 2030, 441 Murray Street will be our single-campus permanent home.

These are wonderfully exciting times for our school community and I look forward to continuing to keep you up to date as we move closer our 2025 transition.

Kindest regards



Tina Campbell | PRINCIPAL



ST GEORGE'S
ANGLICAN GRAMMAR SCHOOL
A School of the Anglican Schools Commission Inc.

50 WILLIAM STREET, PERTH WA 6000
P: +61 8 9312 0800 E: INFO@STGEORGES.WA.EDU.AU
STGEORGES.WA.EDU.AU