

TENTATIVE ITINERARY

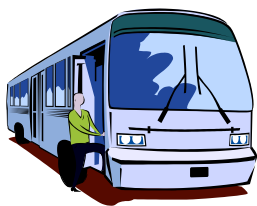
9 DAY CENTRAL AUSTRALIA TOUR (COACH/AIR)

SCHOOL: LILYDALE HIGH SCHOOL – GROUP A

DEPARTURE: MONDAY 18TH APRIL, 2016

**MON 18TH
APRIL**

SCHOOL/EXPRESS TO COOBER PEDY



At **10.00am** this morning the group assembles at school for a **10.30am** departure aboard our express coach to **Coober Pedy**. We travel through the night via Port Augusta (*no meals supplied whilst on express*).

**TUE 19TH
APRIL**

COOBER PEDY/MARLA

(D)

We head into the desert country and arrive into **Coober Pedy** mid morning. Famous for its opals and its population as most live underground, we enjoy a town tour and witness an **opal cutting and polishing demonstration** and visit an **underground home and mine**. We also enjoy lunch and visit the **Breakaway Reserve**, which is famous for several movies which have been filmed here (*subject to road conditions*). We continue to **Marla Traveller's Rest Campground**, arriving late afternoon to set up camp before dinner (*breakfast and lunch at own expense today*).



WED 20TH
APRIL

MARLA/Alice Springs

(BLD)

Enjoy the tranquility of the vast outback as we head for **Alice Springs**. Here we set up for two nights' camp at the **MacDonnell Range Holiday Park**. The rest of the afternoon is free at our campsite.

THU 21ST
APRIL

ALICE SPRINGS

(BLD)

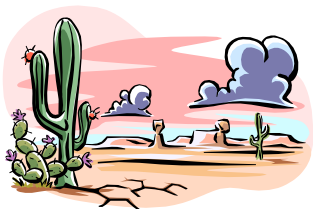
This morning we head south of Alice Springs to enjoy an **Aboriginal Dreamtime & Bushtucker Tour**. Here we enjoy a 9.00am, 3-3.5 hour program, to learn about real Aboriginal culture in a natural bush setting. Be introduced to topics such as Dreamtime and spiritual beliefs, bush survival, and the marriage and social system. Sample a **witchetty grub**, as we learn about **bushtucker, hunting and gathering and weaponry**. There's also a rare opportunity to meet and interact first hand with traditional people from the **Walpiri tribe**. After lunch, we are split into 2 groups, with Group 1 visiting the **School of the Air** for a guided tour, whilst Group 2 visits the **Royal Flying Doctors Base** for a guided tour. Groups then swap activities. We then enjoy a self guided visit of the **Old Telegraph Station**, before returning to our campsite for dinner. Tonight we take a drive up **Anzac Hill**.



FRI 22ND
APRIL

ALICE SPRINGS/WATARRKA

(BLD)



After breakfast we stop at **Simpsons Gap** on route to **Watarrka National Park**, where set up for our two nights' camp at **Kings Canyon Frontier Resort Campground**. The remainder of the day is free to explore our new surrounds.

SAT 23RD
APRIL

WATARRKA

(BLD)

Watarrka National Park is the largest Canyon in Central Australia, with over a mile of red sandstone walls plunging into lush vegetation and natural rock pools. Today we walk the Canyon and view the **"Garden of Eden"** and the domes of the **"Lost City"**. On visiting the Canyon we understand how the colours have made the area a photographer's paradise. We also have time for **optional helicopter flights** over the Canyon (*own arrangements and expense*).

SUN 24TH
APRIL

WATARRKA/ULURU

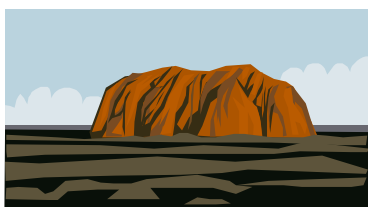
(BLD)

After breakfast we head to Uluru, passing **Mt Connor**, which is often mistaken for **Uluru**. We arrive into Yulara late this afternoon to set up for our two night's camp at the **Uluru Campground**. Before dinner we visit the "**Sunset Strip**" to witness the sunset over Uluru. *(Note:- entry into park is an additional cost per person over the age of 16 years – Trekset will pay entry for the teachers).*

MON 25TH
APRIL

ULURU- KATA TJUTA NAT. PARK

(BLD)



This morning, before breakfast, we head to **Uluru National Park** to view the sunrise from the viewing platform. The park is listed as a World Heritage Area and it is here we wonder at the enormity of the Australian Outback. We visit the **Cultural Centre** *(booked by the school)* before touring the base, viewing the aboriginal rock paintings and caves and learning about local Aboriginal culture and heritage. Later we explore **Kata Tjuta**, some 36 great domes which rival "Uluru" as a spectacle. Here we enjoy the **Valley of the Winds** walk through Kata Tjuta, revealing the spectacular beauty of this magnificent phenomenon.

TUE 26TH
APRIL

ULURU/FLY HOME TO MELBOURNE/SCHOOL

(BL)

This morning we have some free time around camp before packing up and heading to the Ayers Rock Airport. Here we check in for our **flight home to Melbourne**. On arrival, an awaiting coach will transfer the group back to school *(packed lunch may be provided today)*.



TENTATIVE ITINERARY

9 DAY CENTRAL AUSTRALIA TOUR (COACH/AIR)

SCHOOL: LILYDALE HIGH SCHOOL – GROUP B

DEPARTURE: WEDNESDAY 20TH APRIL, 2016

**WED 20TH
APRIL**

SCHOOL/EXPRESS TO COOBER PEDY



At **10.00am** this morning the group assembles at school for **10.30am** departure aboard our express coach to **Coober Pedy**. We travel through the night via Port Augusta (*no meals supplied whilst on express*).

**THU 21ST
APRIL**

COOBER PEDY/MARLA

(D)

We head into the desert country and arrive into **Coober Pedy** mid morning. Famous for its opals and its population as most live underground, we enjoy a town tour and witness an **opal cutting and polishing demonstration** and visit an **underground home and mine**. We also enjoy lunch and visit the **Breakaway Reserve**, which is famous for several movies which have been filmed here (*subject to road conditions*). We continue to **Marla Traveller's Rest Campground** arriving late afternoon to set up camp before dinner (*breakfast and lunch at own expense today*).



FRI 22ND
APRIL

MARLA/ULURU - KATA TJUTA NAT. PARK

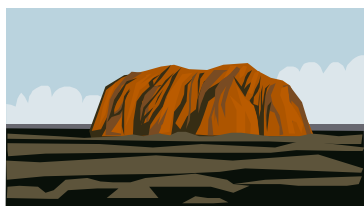
(BLD)

Enjoy the tranquility of the vast outback as we travel through country which almost defeated our intrepid explorers. We pass Mt Connor, often mistaken for **Uluru** and arrive into Yulara late this afternoon to set up for our two night's camp at the **Uluru Campground**. Before dinner we visit the "**Sunset Strip**" to witness the sunset over Uluru. *(Note:- entry into park is an additional cost per person over the age of 16 years – Trekset will pay entry for the teachers).*

SAT 23RD
APRIL

ULURU - KATA TJUTA NAT. PARK

(BLD)



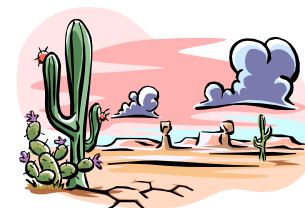
This morning, before breakfast, we head to **Uluru National Park** to view the sunrise from the viewing platform. The park is listed as a World Heritage Area and it is here we wonder at the enormity of the Australian Outback. We visit the **Cultural Centre** *(booked by the school)* before touring the base, viewing the aboriginal rock paintings and caves and learning about local Aboriginal culture and heritage. Later we explore **Kata Tjuta**, some 36 great domes which rival "Uluru" as a spectacle. Here we enjoy the **Valley of the Winds** walk through Kata Tjuta, revealing the spectacular beauty of this magnificent phenomenon.

SUN 24TH
APRIL

ULURU/WATARRKA

(BLD)

After breakfast we head to **Watarrka National Park** to set up for our two nights camp at **Kings Canyon Frontier Resort Campground**. The remainder of the afternoon is free to explore our new surrounds.



MON 25TH
APRIL

WATARRKA

(BLD)

Watarrka National Park is the largest Canyon in Central Australia, with over a mile of red sandstone walls plunging into lush vegetation and natural rock pools. Today we walk the Canyon and view the "**Garden of Eden**" and the domes of the "**Lost City**". On visiting the Canyon we understand how the colours have made the area a photographer's paradise. We also have time for **optional helicopter flights** over the Canyon *(own arrangements and expense).*

TUE 26TH
APRIL

ALICE SPRINGS

(BLD)

Today we travel to **Alice Springs**, enroute stopping at **Simpsons Gap**. On arrival in Alice Springs we set up for two night's camp at **MacDonnell Range Holiday Park**. The rest of the afternoon is free at our campsite.

WED 27TH
APRIL

ALICE SPRINGS

(BLD)

This morning we head south of Alice Springs to enjoy an **Aboriginal Dreamtime & Bushtucker Tour**. Here we enjoy a 9.00am, 3-3.5 hour program, to learn about real Aboriginal culture in a natural bush setting. Be introduced to topics such as Dreamtime and spiritual beliefs, bush survival, and the marriage and social system. Sample a **witchetty grub**, as we learn about **bushtucker, hunting and gathering and weaponry**. There's also a rare opportunity to meet and interact first hand with traditional people from the **Walpiri tribe**. After lunch, we are split into 2 groups, with Group 1 visiting the **School of the Air** for a guided tour, whilst Group 2 visits the **Royal Flying Doctors Base** for a guided tour. At 3.00pm, the groups swap activities. We then enjoy a self guided visit of the **Old Telegraph Station**, before returning to our campsite for dinner. Tonight we take a drive up **Anzac Hill**.



THU 28TH
APRIL

ALICE SPRINGS/FLY HOME TO MELBOURNE/SCHOOL

(BL)

This morning we have some free time around camp before packing up and heading to the Alice Springs Airport. Here we check in for our **flight home to Melbourne**. On arrival, an awaiting coach will transfer the group back to school (*packed lunch may be provided today*).



GENERAL INFORMATION REGARDING YOUR TOUR

CAMP GROUNDS:

Marla Travellers Rest Campground
Stuart Highway
Marla SA 5723
PH: (08) 8670 7001

Uluru Campground
Yulara Drive
Yulara NT 0872
PH: (08) 8957 7001

Kings Canyon Frontier Resort
Ernest Giles Road
Kings Canyon NT 0871
PH: (08) 8956 7442

MacDonnell Range Holiday Park
Palm Place
Alice Springs NT 0870
PH: (08) 8952 6111



WHAT TO BRING

CLOTHING: Underwear, Socks, Jeans/pants, Shorts, Jumper/Cardigan, Raincoat/Parka, Shirts/Tshirts, Tracksuit (ideal for sleeping), Bathers, Sandals/Thongs, Rubber Soled Walking Shoes, Handkerchiefs.

GENERAL: Towels and Tea Towel, Toilet Requisites, Sunglasses, Torch, Camera/Films, Clothes Pegs, Games/Cards, CD's, Bumbag and DVDs for the Coaches, plus extra money for bottled water.



EATING UTENSILS: Knife, Fork, 2 Spoons, Plastic Plate, Bowl and Mug.

SLEEPING GEAR: Sleeping Bag, Pillow and Pillow Case.

TENTS: Trekset will supply 3 man Pyramid style tents, Two (2) persons per tent.
TREKSET WILL ALSO SUPPLY SLEEPING MATS FOR THE ENTIRE GROUP SO NO NEED TO BRING A LILO.

PLEASE NOTE:



A luggage limit of one Sausage/Sports bag or medium size suitcase plus one school or travel bag applies per person. Sausage/Sports bags are the most suitable luggage for camping tours, as the sleeping bags can be packed inside, along with clothes. The school/travel bag is useful inside the coach for day to day items (e.g. lunch on first day, camera, towel, eating utensils, torch and games, etc.). Metal framed Rucksacks or Backpacks are not accepted.

LUGGAGE LIMIT:

Suitcase; one which should not exceed the total linear dimensions of 140cm (i.e. length and width and depth) and weight of **15kgss**.

Hand Luggage: One softsided bag no larger than:- Width 23cm, Height 34cm, Length 48cm and a sleeping bag where applicable. The hand luggage must be able to fit in the luggage racks above the seats, on the coach. If this is not possible, the hand luggage will need to be repacked to fit on the racks or placed in the luggage bins under the coach.

Please note that RED/WHITE/BLUE STRIPED SHOPPING BAGS, SWAGS & CRICKET BAGS will not be allowed on the tour. Any luggage that does not adhere to the above measurements & weight may not be accepted by the coach captain due to limited luggage space and weight allowance.



A TYPICAL DAILY MENU

BREAKFAST:

Continental selection includes a choice of cereals (Muesli, Corn Flakes, Weetbix, Rice Bubbles), tinned fruit, yoghurt, toast & spreads, with juice, tea, coffee & milo. Hot selection may include: sausages, bacon, poached or scrambled eggs, baked beans, spaghetti or pancakes.

Some mornings may only be a continental breakfast, due to travelling times

LUNCH:

Most days there will be a selection of cold meats and tuna with cheese and salads to make your own sandwich. Lunches include fresh fruit (*where available*), sweet biscuits, water and cordial. Hot lunches may include hamburgers, hot dogs, or toasted sandwiches.



DINNER:

Each night you will have 3 courses to fill you up after a hard days exploring.

Entrée will normally be a soup (chicken noodle, thick vegetable, tomato, pumpkin, creamy chicken) with sliced bread, or "nibbles": a selection of chips, shapes, cheese, kabana, cracker biscuits, vegetable sticks, etc.

Main course may include spaghetti bolognese, chicken schnitzels with potatoes and vegetables, a good old Sunday roast, BBQ meat & salads, chicken stir-fry, lasagna or fried rice with water & cordial (*other main meals may be supplied, than those listed*).

Dessert is always something yummy. May include chocolate mousse, ice cream & toppings, apple crumble & custard or fruit jellies.

SUPPER:

Sweet biscuits with tea, coffee and milo

GROUP DUTIES:

Students are requested to participate in the day to day running of camping tours: Duties are:-

- Erecting and Dismantling tents.
- Assisting cook with meal preparation & clearing up
- Washing and drying of personal dishes.
- Help with loading, unloading and cleaning coach

We would suggest groups of 4 students.

**WET WEATHER:**

Wet weather may affect a safari tour and conditions can become uncomfortable due to extended periods of rain. If this occurs, your coach captain will make every effort to find alternative accommodation. ie. church or scout hall or similar, or he may need to change the itinerary around to suit weather conditions. Should the group require accommodation in vans, bunkhouse, motels, etc or need to change destinations, this additional cost must be paid by the group. Some campsites will not give a refund, or may charge cancellation fees, for cancelling due to weather,

therefore the school will be required to pay the additional camping fees to camp or be accommodated elsewhere.

**EMERGENCY
NUMBERS:****ALICE SPRINGS (08)**

Police.....000

Fire.....000

Ambulance.....000

Alice Springs

Hospital.....8951 7777

ULURU (08)

Police.....000

Fire.....000

Ambulance.....000

Alice Springs

Hospital..... 8951 7990



Each of the above authorities stress that in the case of an emergency, please use the 000 number.