



RYDA THE MOST IMPORTANT DAY ON YOUR CHILD'S CALENDAR

Your child's school year is booked in to attend the award-winning RYDA workshop, an essential component of the RYDA Road Safety Education Program.

Whether they're learning to drive or not, here are the top reasons why every Australian student should attend RYDA.

1 Young Australians continue to be over-represented in road trauma statistics

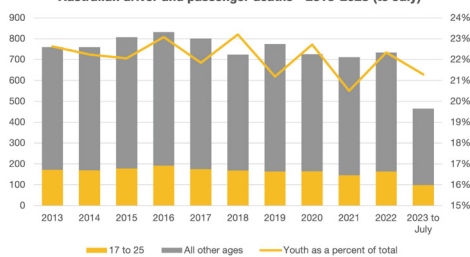
Australia has seen significant improvements in road safety over the past 2 decades, however the number of fatalities on our roads is failing to decline fast enough to meet the target of zero deaths by 2050. Young drivers and their passengers are over-represented, making up **22% of fatalities despite making up less than 10% of the population**. This makes road trauma the second highest cause of death for Australians aged 17-25.

The need is even more acute in regional and remote Australia. 3 in 4 youth driver and passenger fatalities occur on regional or remote roads. But only 1 in 4 Australia youths live in regional or remote areas, making them 8 times more likely to die on our roads than youths in major cities.

The challenge of road trauma is much bigger. For every young driver or passenger who dies in regional or remote Australia, 12 are seriously injured, requiring hospitalisation.

Nearly all of these deaths and injuries are preventable, with human error being a factor in over 90% of crashes. **RYDA is designed to reduce the margin of human error.**

Australian driver and passenger deaths - 2013-2023 (to July)



2 RYDA is specifically created for Australian students in years 10 to 12

Education programs are essential in providing a road safety intervention that address all the key risk areas and focus on developing higher order skills and critical thinking.

Since 2001, RYDA has been supporting youth development in a number of areas including **social resilience**, and **anticipating and managing risk**. This provides students a **unique opportunity to set road safety goals and build strategies alongside their friends, who they will most likely be riding with as drivers or passengers**. RYDA is an Australian program that draws on an international expert **Advisory Council** to ensure it meets best-practice in road safety education.

Focusing on the role of both drivers and passengers, **RYDA is essential wherever your child is on their journey**, whether that's starting to ride as passengers with newly licenced drivers, getting their own licence or starting to driving solo.

3 RYDA replaces shock tactics with strategy

All the evidence points to the fact that shocking depictions you might have seen as part of road safety messages decades ago don't change behaviour and attitudes. **Shock messages and graphic images have no place in best-practice road safety education.**

The focus must be on working amongst peers in small groups to build the resilience, knowledge, techniques and strategies to empower students to make better decisions to help them avoid being involved in crashes.

Teenage brains are still in development, so **RYDA develops practiced and rehearsed responses to challenging situations**, helping students avoid emotional and impulsive reactions.

In doing so, **RYDA adheres to best-practice guidelines in road safety education established by every state government in Australia.**



4 RYDA is supported by government, corporate and community partners

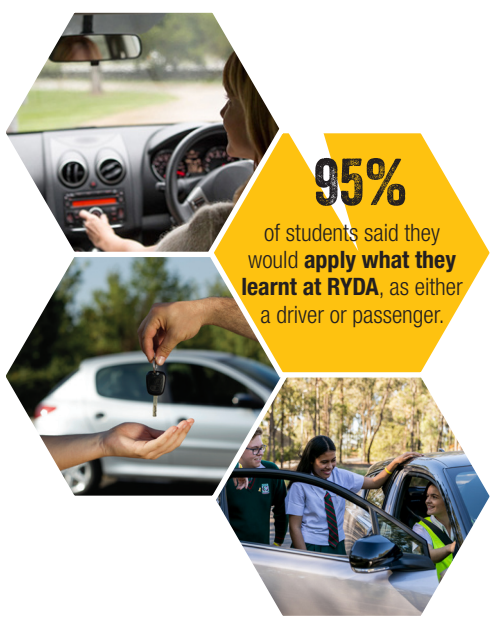
As Australia's **largest and only national road safety education program**, RYDA is developed and managed by the not-for-profit organisation Road Safety Education Limited (RSE).

RSE receives vital support from Corporate Partners (**BOC, Toyota, Bridgestone and Boral**), State and Local Governments, and our Community Partners, **Rotary**.

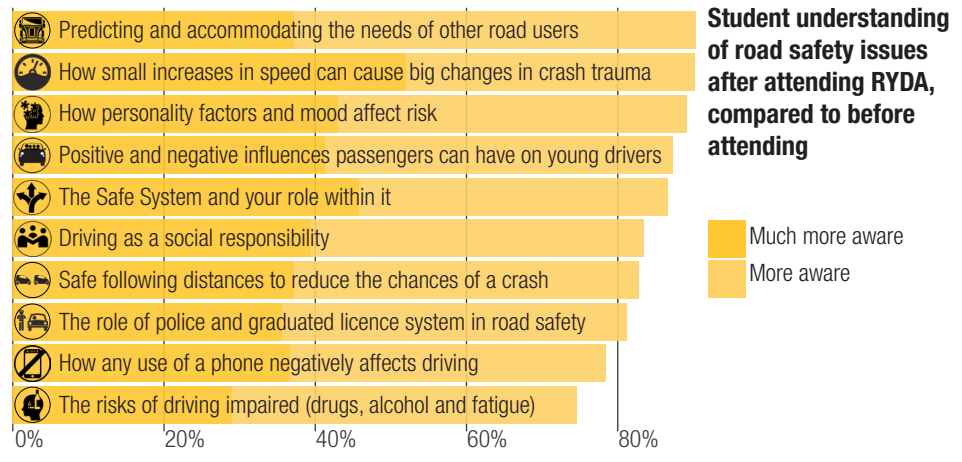
This helps make RYDA affordable and accessible to those who need it the most, with **every student in Australia receiving subsidised access to the RYDA program**.

5 RYDA creates knowledge with impact, developing practical skills and strategies

Analysis of student participants in RYDA shows that it is creating **knowledge with impact**. Students indicated a **high level of growth of understanding** across important fields, especially those unique to RYDA, such as understanding the needs of other road users, the impacts of personality and moods on driving decisions, the influence of passengers and the notion of **driving as a social responsibility**.



95% of students said they would **apply what they learnt at RYDA**, as either a driver or passenger.



Students generally feel far more equipped to deal with challenges on the road having attended RYDA, including **increased hazard perception skills**, their role in creating a **positive environment in the car as a passenger**, and **planning ahead of time** to make better decisions.

Teachers across Australia support RYDA, with over 99% rating the program as very worthwhile or worthwhile in its effect on students' road safety attitudes and intentions. **98% of teachers agree RYDA should be compulsory for senior high school students**.

6 The RYDA workshop is just one part of the road safety education program

RYDA features a full-day workshop featuring **six 30-minute sessions** of highly engaging practical demonstrations, real-life narratives, videos, quizzes and interactive role play. Sessions are designed to be held in **classroom-sized groups** and are led by a team of specially trained facilitators including police, driving instructors and other community sector specialists.

Supporting the workshop, RYDA's **online teachers' portal**, loaded with classroom and homework activities, gives educators everything they need to continue the learning throughout the school year, using road safety as an authentic context for classroom teaching and **creating a safety culture to support active, responsible road citizens**. Students are also given access to an **online revision course through our Learning Management System**.

The RSE website also features **dedicated resources for parents and carers**, helping you navigate a time of significant change and challenge in your teenager's lives. This includes everything from fact sheets on the major risk factors to tips on choosing driving instructors or setting parent-led driving lesson plans. Parents can also download a post-RYDA workshop dinner table conversation guide which pulls out the key learnings from the day and helps them support their teen in their new strategies.

WHAT STUDENTS SAY...
This road safety excursion was by far one of the best excursions I have ever been to. I have learned so much and found today so interesting that I couldn't wait to tell my family all that I learned.