

GRPS Photo Comp!

In this week's online assembly I told you about a Photography Competition that everyone is welcome to enter.

And entering is easy! All you have to do is


- ★ Think about & plan what photo you would like to take that matches this week's theme which is



- ★ Get your camera ready – it might be on your phone or ipad.
- ★ Take your photo
- ★ Upload your photo to the Padlet. To do this you need to go to this link ...

<https://padlet.com/anmareebosomworth/Bookmarks>

and follow these instructions ...

Take a close-up photo of your Bot. Open the padlet link. Drag and drop directly from your desktop, or click anywhere on the padlet. If you're on a mobile device, double tap anywhere or select the plus (+) button. A simple text post will appear. Title your work with your first name and your grade (eg. Erin 34C) so we know who created it. To attach a file, click on the upload button  below the text.

Please don't forget to Title the work with your name and class



This week's prize is a \$20 Eastland voucher
– available when we return to school!

The judges (Mrs Bosomworth and the Art Captains) will be looking for photos that are taken by you, clear, entertaining and clearly fit the theme.

A few tips ...

Good nature photography often means finding the right angle and maybe getting a little dirty to create an interesting image.

For example, lying or crouching down low can give a different perspective on your subject and lying on your back and looking up between branches can look good too.



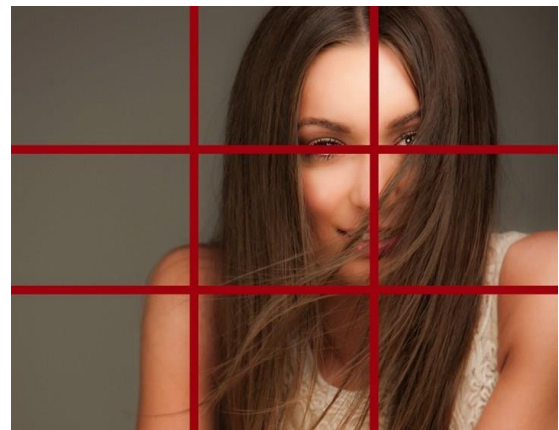
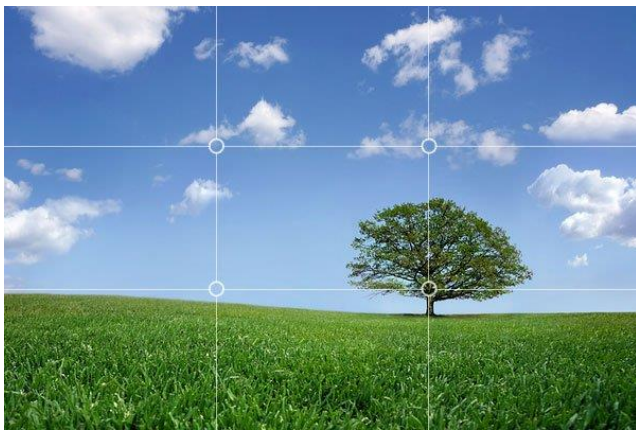
Creating a frame for your work with the objects in it is a fun idea to try too.



Also a bird's eye view from above your subject can be effective.



Plonking something in the middle of the screen is not always the most interesting way to present your photo. By imagining your photo split into thirds with objects placed along those lines, you are creating a more interesting artwork. In the image below, the grass meets the sky 1/3 of the way up from the bottom and the tree is 1/3 of the way in from the right edge of the frame. This is much better than having the tree right in the middle. You can also see in the second photo that having the lady off- centre is effective.



Unless it's for effect, try to not have too much 'dead space' in your photo – zooming in a little closer on your subject (especially when taking portraits) can be more effective. In the images below, the photo on the right is more interesting than the one on the left.

