



REGIONAL SCIENCE EXCHANGE PROGRAM 2024

Talented Year 10 students from across regional Victoria with a passion for science are invited to attend John Monash Science School (JMSS) in Melbourne for a three-week block as part of our 2024 Regional Science Exchange Program.



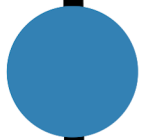
*Join us for Exchange Block 1:
*** 21st April - 10th May ****

APPLICATIONS NOW OPEN!



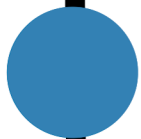
Applications open -

5th FEB 2024
9AM



Submissions due -

25th FEB 2024
4PM



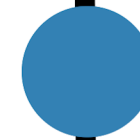
Teacher References due -

27th FEB 2024
4PM



Acceptance Notification -

1st MARCH 2024
4PM



Enrolment due -

15th MARCH 2024
4PM



Exchange -

21st APRIL - 10th MAY
2024

REGIONAL SCIENCE EXCHANGE PROGRAM 2024

Are you a Year 10 student with talent, interest, curiosity and enthusiasm in the areas of Science, Mathematics and/or Technology?

Apply to participate in every day life at JMSS, specialised incursions at Monash University Clayton, and a variety of unique and advanced STEM units, such as:

- Programming for Simulations and Machine Learning
- Aquatic Fieldwork Science
- Microbiology
- Astrophysics
- Nature and Beauty of Mathematics
- Terraforming Mars
- Introduction to Games Programming and Data Science
- Disease, Disorders, and Scientific Discovery
- Medical Physics
- Pharmaceutical Science

Need more information?

Check out the [RSEx info-book](#) or contact program coordinator Abby Goff on either: media@jmss.vic.edu.au or abigail.goff@jmss.vic.edu.au or call 9905 8062

Excited to apply?

Tell us how the program would benefit you in the application form below:

Apply now!





REGIONAL SCIENCE EXCHANGE PROGRAM

An immersion block for regional and rural Victorian Year 10 students with a passion for science, mathematics and technology



JOHN MONASH
SCIENCE SCHOOL

<https://www.regionalscienceexchange.com.au/>

Talented Year 10 students from across regional Victoria with a passion for science are invited to attend John Monash Science School (JMSS) in Melbourne for a three-week block as part of our Regional Science Exchange (RSEx) Program.

John Monash Science School is Victoria's first specialist secondary school focussed on science, mathematics and associated technologies.

The curriculum at JMSS challenges students to explore cutting-edge scientific knowledge in an immersive teaching and learning environment. JMSS is located within the grounds of Monash University and works in partnership with various faculties of the university to develop curriculum, and provide workshops and career directions for JMSS students.

Visiting students will have the opportunity to experience the unique learning environment offered through co-location with Monash University and benefit from working with a large group of keen scientifically-minded students, as well as inclusion in School Houses with Staff Mentors.

As JMSS is a bring your own device (BYOD) environment, students are encouraged bring two devices such as laptop/iPad/tablet/smartphone for daily use as part of lessons.

As part of their exchange experience, students will choose two Emerging Science subjects from a range of offerings including:

- Nature and Beauty of Mathematics
- Biotechnology
- Medical Physics
- Pharmaceutical Science
- Materials Science and Engineering
- FLEET Science
- Microbiology

Students will also have opportunity to explore Melbourne's diverse cultural landscape through curated excursions - forming a one-of-a-kind immersive educational experience.



INTERESTED?



Hear from previous Regional Science Exchange Students at <https://www.youtube.com/user/JMSSMelbourne>



Register your interest in participating in the next Regional Science Exchange Program: www.regionalscienceexchange.com.au



JOHN MONASH
SCIENCE SCHOOL

<https://www.regionalscienceexchange.com.au/>

Timeline*

*All dates to be confirmed

Applications

Applications open in week 2 of Terms one (for term 2 cohort) and two (for term 3 cohort). Students will apply directly, with their schools knowledge.

Submission

Students must submit applications to JMSS before the closing date (one month after applications open).

Notice

Applicants will be notified by email of their acceptance or otherwise one week after the closing date.

Exchange

Students will attend JMSS for a 3-week block:

Block 1 -

Term 2: Weeks 2, 3 and 4

Block 2 -

Term 3: Weeks 2, 3 and 4

Accommodation

Students will be billeted out as part of a home-stay arrangement with JMSS families.

A Welcome Lunch for parents, students and host families will be held at JMSS on Sunday of the Exchange blocks at 12pm. All families are welcome to attend, including brothers and sisters. Students will be encouraged to stay with the host family at least one weekend during their 3-week block to experience Melbourne. Weekends are to be negotiated directly with the homestay family.

Annual Science Fair

Students participating in the Regional Science Exchange are also invited to return to JMSS for our Science Fair in November where they will present their projects to an audience of their peers, teachers, academics and our parent community.

Curriculum

All students will enrol in JMSS Year 10 curriculum and will be able to continue their studies in core subjects like English and Mathematics while at JMSS. JMSS also offers a range of Unit 1 and 2 studies. Students work in both single and double classes with team teaching, and can benefit from sharing information and discussion with up to 50 peers.

Visiting students will also enrol in two of JMSS's Enrichment Science electives. These studies are only available at JMSS and have been co-constructed with assistance from Monash University Academics. Students will be able to nominate their preferences from subjects such as:

- **Nature and Beauty of Mathematics**
- **Analytical and Spectroscopic Science**
- **Biotechnology**
- **Diseases, Disorders, and Scientific Discovery**
- **Medical Physics**
- **Programming for Simulation and Machine Learning**
- **Pharmaceutical Science**
- **Astrophysics**
- **Aquatic Fieldwork Science**
- **Terraforming Mars**
- **Materials Science and Engineering**
- **Introduction to Games Programming and Data Science**
- **Future Low Energy Electronics Technology (FLEET) Science**
- **Microbiology**

The final class list will be published prior to applications opening. Allocation will depend on timetables and class numbers. Students will undertake three weeks of study in one of these electives.

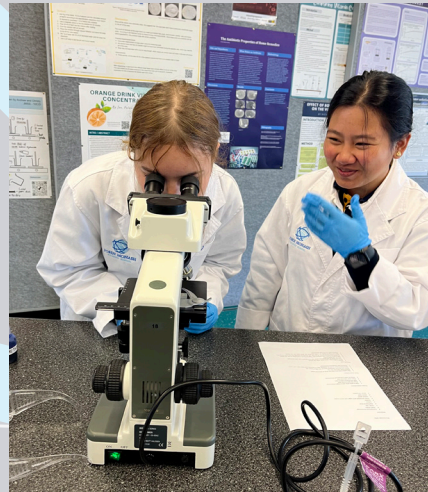
JMSS also run online classes through the Emerging Sciences Victoria (ESV) program, with more information available at: www.emsci.vic.edu.au

Any students (whether on exchange or not) are eligible to participate in ESV classes for a semester at a time.



"The elective classes are my favourite part about this exchange, the content is very interesting"
- Dylan

"EEI is interesting since we would never have the opportunity to do it at my school at home."
- Keeley



"I enjoy the double classes and how everyone is committed to learning and doing their own work. There is also no distractions which is good."

- Katherine

"The elective classes I am enrolled in are extremely interesting and never fail to engage me. The content of the lessons vary widely but overall are interesting and link to a good overall education path."





"It's an amazing experience for anyone who loves science. The classes are fun, and the other students are really kind. I learnt so many things I wouldn't have otherwise"



"I loved being in a school where the students want to learn and the teachers want to see the best from their students... I was able to be challenged and ask questions. I also loved how nice staff and students alike were to us... it made me feel welcome at JMSS and took out some of the nerves if starting at JMSS."



"I would recommend the program for students who has the passion for science and mathematics since the school focuses more on that topics, you will learn a lot and even have enjoy the stay in the school with very welcoming students and classmates."

Cost

The costs of this initiative is now covered by the Department of Education. JMSS recently received funding for the Regional Exchange program, thus making it FREE to all students applying. JMSS will also cover school-related costs such as supervision for all school and group activities, as well as a JMSS uniform rugby jumper.

Regional students will have access to JMSS academic and careers' support, counselling and pastoral care. Students will have homestay arranged for them either with JMSS families or identified families who have had experience with hosting international students. Students will also be paired up with a JMSS buddy to support them in their new learning environment.

Students will only need to organise their own transport from home to Melbourne and return, including car pooling and public transport options. It is hoped schools will assist with costs and travel arrangements. Applicants may wish to approach local service clubs, community groups and local businesses to sponsor their place on the program, or set up fundraising activities.



Selection Criteria

The Regional Science Exchange Program is open to Year 10 students who have talent, interest, curiosity and enthusiasm in the areas of Science, Mathematics and/or Technology.

To apply students need to answer the following questions within the application form which will be made available closer to the date (Week 1, Term 1 for RSEx Block 1 and Week 1, Term 2 for RSEx Block 2).

- Describe your interest in science/math/technology in one typed A4 page max.
- Describe in 200 words or less how you will use this opportunity back in your school and/or home town after the experience is over, or how it might impact your future subject or career choices.
- Please consider and list any possible issues regarding being away from home for 3 weeks. (These may include part-time work, sporting commitments, any relevant experiences or issues with staying away from home.) Please advise if you are studying any VCE (Year 11 and 12 subjects) in Year 10, and approximately how much work will be required during your 3-week block.
- Applications must include the name of the student, home address and names of parent/s, as well as contact details of the school, science teacher contact, and principal. Geographical location of students' homes and schools attended will also be taken into consideration. Indigenous students are encouraged to apply.

In support of student applications:

- Teachers are asked to provide a summary of students' academic performance over the period Year 7- 9 with particular reference to science, mathematics and technology capabilities. Please comment on student potential and the value of the program to the student and school. Maximum of one A4 typed page emailed to our exchange program team on:

media@jmss.vic.edu.au

Application Process

Applications are invited from students across regional Victoria. Students are asked to fill the out the application form by **the close date (upcoming RSEx dates tbc)**.

The final number of places available varies year to year, and is largely determined by available homestay places. As such, we may be unable to offer a place to each student that applies.

Students and their schools will be notified of success or otherwise one week after applications close.

Virtual School: Emerging Sciences Victoria (ESV)

All Year 9 and 10 students around Victoria are invited to study subjects such as Neuroscience, Indigenous Science, and Astrophysics for a whole semester with JMSS via Emerging Sciences Victoria (ESV).

Through ESV, students study with us in real-time and collaborate online with students around Victoria.

There are 2 x 50 minute classes per week with some additional preparation tasks and homework.

The subjects offered through ESV are a great extension for students with an interest or passion for science, or used as a science elective, and anywhere from 1 to 30 students may participate. To participate, all students require is a computer with headphones and a microphone, and access to the internet.

For more details, including registration and fee details, please visit www.emsci.vic.edu.au



For further details, and to register your interest for the next Regional Science Exchange, please visit:

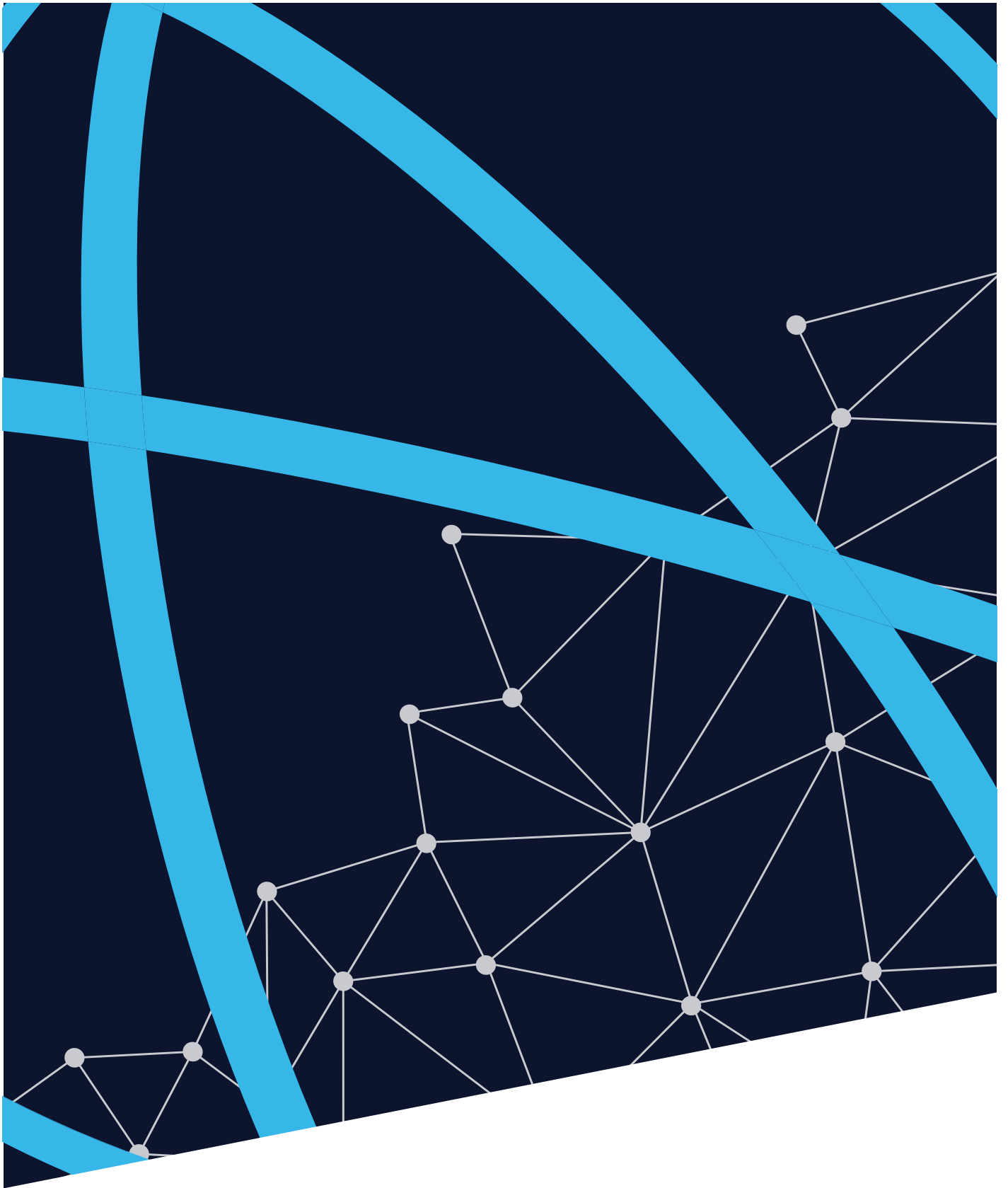
www.regionalscienceexchange.com.au

or phone +61 (03) 9905 1002



JOHN MONASH
SCIENCE SCHOOL

<https://www.regionalscienceexchange.com.au/>



JOHN MONASH
SCIENCE SCHOOL

<https://www.regionalscienceexchange.com.au/>