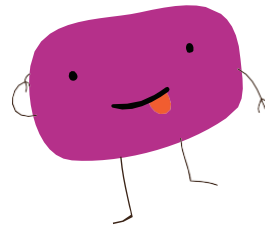
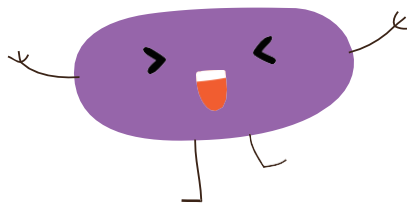
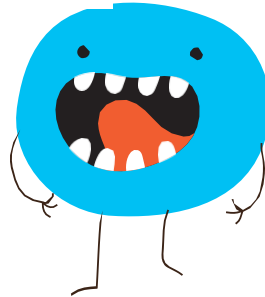




# LIVING WATERS OSHC Vacation Care

9<sup>th</sup> – 15<sup>th</sup> December 2022



**Bookings close  
Friday 25<sup>th</sup>  
November 2022**

**Friday 9  
December 2022**  
In-house

**Monday 12  
December 2022**  
In-house

**Tuesday 13  
December 2022**  
Excursion

**Wednesday 14  
December 2022**  
Incursion

**Thursday 15  
December 2022**  
Incursion



### CREATIVE PAINT DAY

Today we will be exploring a variety of creative painting mediums and activities including plaster Christmas moulds and a life size Christmas tree!

**BYO lunch**  
**\$75 GREEN**



### WATER PLAY DAY

Today we will be getting wet and refreshed with a variety of water play fun! Don't forget to bring rashies and spare clothes!

**BYO lunch**  
**\$75 AMBER**



### CINEMA EXCURSION

Today we will be heading off to the Alice Springs Cinema to watch a movie on the big screen! We will enjoy the movie with drinks and popcorn!

**BYO lunch**  
**\$85 AMBER**



### ACTIVE WHEELS DAY

Today we encourage everyone to bring their favourite set of wheels and safety gear for some wheels day fun! A fresh Subway lunch will be provided! We will also enjoy a surprise active session from a special guest in the afternoon!

**Lunch provided**  
**\$75 GREEN**



### CHRISTMAS DISCO

Today we will be celebrating Christmas with a disco! We will be visited by a Yoga instructor providing a Christmas themed Yoga session. Come dressed in your best Christmas outfit! We will celebrate with pizza for lunch!

**Lunch provided**  
**\$85 RED**

**YMCA Living Waters OSHC**  
Living Waters Lutheran School  
2 Kramer St, Larapinta  
**Jemma Smith**  
Alice Springs OSHC Coordinator

**P:** 0499 790 634  
**E:** livingwaters.oshc@ynt.org.au

For bookings visit [www.nt.ymca.org.au](http://www.nt.ymca.org.au) or email [livingwaters.oshc@ynt.org.au](mailto:livingwaters.oshc@ynt.org.au)



# LIVING WATERS OSHC Vacation Care 9<sup>th</sup> – 15<sup>th</sup> December 2022

## EXCURSION AUTHORISATIONS

Child/rens Name: \_\_\_\_\_

Date of Birth: \_\_\_\_\_ / \_\_\_\_\_ / \_\_\_\_\_

### ALICE SPRINGS CINEMA

Date: Tuesday, 13 October 2022

Departure: 10 am

Returning: 2pm

Transportation: Bus

Address: Todd Plaza, 11 Todd Street, Alice Springs NT 0871

Expected number of children: 15-30

Educator to child Ratios: 1 to 15 (school age)

I give permission for my child/children to attend the Excursion.

Date: \_\_\_\_\_

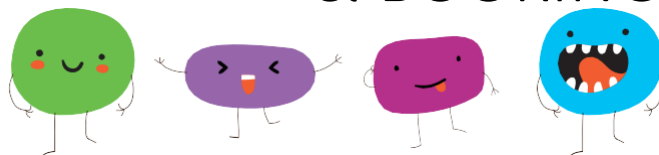
Signature: \_\_\_\_\_



**YMCA Bradshaw OSHC**  
Bradshaw Primary School,  
23 Adamson Ave, Gillen NT 0870  
**Donna Crichton**  
Braitling OSHC Coordinator

P: 0499 790 634  
E: [Bradshaw.oshc@ynt.org.au](mailto:Bradshaw.oshc@ynt.org.au)





### OSHC will be opened

7:30am – 6:00pm Mon – Fri

Please be sure to Sign your Children in and Out ☺

### How to book

1. If you are an existing Family at this centre, please book sessions using XPLOR, or by email or phone. This will mean you are already enrolled, and no new enrolment is required.

2. For New Families that wish to Enrol: <http://oshc.nt.ymca.org.au/families/>. Please note that if you have not yet applied for CCS with MyGov, that this can be a 4 week process and it is recommended you apply early.

3. Submit your completed excursion permission forms via one of the following options:

- by email to: [LivingWaters.oshc@ynt.org.au](mailto:LivingWaters.oshc@ynt.org.au)
- Hand into the centre.

4. Enrolments close Friday, 3 weeks prior to commencement of vacation care so please be quick to secure your child's place. Late and extra bookings will only be accepted if there are available spaces. Excursions are capped due to travel limited availability; please ensure you are quick to avoid disappointment. Late enrolments will incur a \$20 late fee administration charge.

### Fees

From \$70 a day

- Incursion and excursion fees are dependent on the particular activity and will be advertised for each vacation care period
- Late pick up fees is \$15 per 15 minute increments
- Commonwealth Child Care Subsidy (CCS) is available to eligible families
- Families must have entered their billing information on Xplor to attend the service. Fees will be deducted from the nominated account. All booked days will be charged 2 weeks in advance. All absent days will be charged. Please check your billing details are still correct if you have not attended the service for more than 3 months.
- All Term/Vac Care fees must be paid in full before care can be provided.
- A Payment Agreement form will need to be signed for Vac Care to be attended. If you are not sure, you can sign a new one or have the Coordinator check for you.
- Cancellations will be accepted with 5 days notice.

### Clothing and Footwear

- Please send children in clothes appropriate for the activity they will be participating in.
- Children will be required to wear **sun-smart hats** every day.
- Please ensure adequate footwear each day. **No bare feet or thongs.**

### Food and Drinks

Please provide a healthy packed lunch, snacks and drink bottle every day. Please provide enough food for the entire school day.

Morning and Afternoon tea will be provided.

**No spending money is permitted**

### Excursions

Children must be at the venue by 9am on excursion days.

### Electronic Devices

Hand held and all electronic devices i.e ipads, phones, ipods, PS2 etc. are not permitted at the centre. If a child brings an electronic toy or mobile device, staff will keep this in a safe place until families arrive.

### Medical Conditions

- Please provide all necessary medications, asthma inhalers, spacers, Epipens/ Anapens, etc. Speak to educators and complete necessary paperwork on arrival.
- Medical action plans and risk minimisation plans must be completed and submitted with enrolment forms.
- Individual Anaphylaxis Medical Action Plans will be displayed where all staff can readily access them.
- All families to be aware that children at risk of anaphylaxis will be attending the vacation care program. Please be aware of the various allergies that children suffer from, for example: peanuts, tree nuts, eggs, sesame seeds
- A risk minimization plan is required to be developed for all children who have been diagnosed with anaphylaxis, asthma, diabetes or any other medical condition in consultation with educators on enrolment.

### Behaviour Management Policy

YMCA has the right to remove or refuse further participation of any child whose behaviour is deemed to be inappropriate. Bullying, bad language and harassment of other children and educators will not be tolerated under any circumstances.

### Children with Additional Needs

In accordance with the application for enrolment procedure we may be able to provide additional educator support to include children with additional needs and children from culturally and linguistically diverse backgrounds.

Prior to booking, please discuss your specific circumstances with the service coordinator.

### Traffic Light System

Here at YMCA we understand that we cater for and support many families of children with additional needs and or sensory processing needs. We acknowledge that many of these can vary from child to child, some are diagnosed and others are not, this may also include anxiety.

To help families in deciding what activities are suitable for each individual child and their needs we have created the Traffic Light System.

The Traffic Light System is exactly as it sounds, a variation of coloured dots indicating what level of sensory difficulties that may be encountered in each programmed activity.

**RED:** indicating that throughout the activity a large amount of sensory difficulties may be encountered. Parents may decide at their own discretion upon consultation with the coordinator, if their child will be able to participate comfortably. Children attending on these days will require an Inclusion Support Plan.

**AMBER:** Indicating that there is a medium level of sensory difficulties that may be encountered, parents may decide at their own discretion upon consultation with the coordinator, if their child will be able to participate comfortably. Children attending on these days will require an Inclusion Support Plan.

**GREEN:** Indicating that this activity will be a wonderful opportunity for your child to participate comfortably.