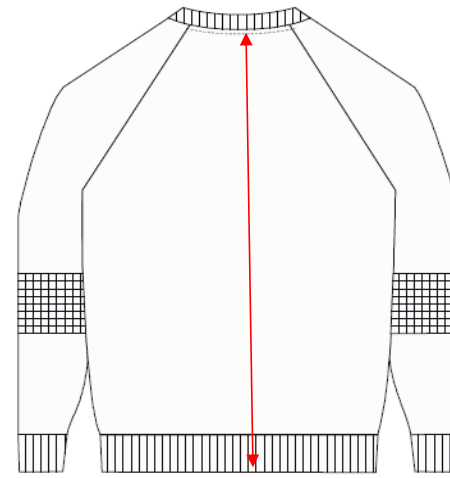
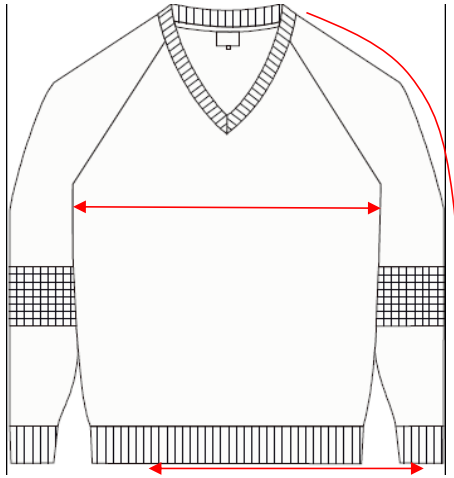




## Knitwear size chart



POM	Size	4	6	8	9	10	12	14	16	18
B1	CB Length	42.5	48.5	54.5	57	60	62	64	66	68
A1	Chest Circumference 2.5cm underarm	62	67	72	77	82	87	92	97	102
D2	Hem Circumference	48	52	56	60	60	65	70	75	80
J2	Overarm excl neck rib	49.5	55.5	61.5	64.5	67	69	71	75.5	79

POM	Size	20	22	24	26	28	30
B1	CB Length	70	72	74	76	78	80
A1	Chest Circumference 2.5cm underarm	107	112	117	122	127	132
D2	Hem Circumference	85	90	95	100	105	110
J2	Overarm excl neck rib	81	82	83	83.5	84.5	86

4/04/2017

All designs, text, graphics, information relating to garments, product specifications and size charts are Copyright to Trutex 2014 ©.