



**Fitzroy  
Primary  
School**

# **Information**

for prospective parents





# Welcome to Fitzroy Primary School.

Fitzroy Primary School is located on the fringe of the CBD in Melbourne and attracts families from the local area and surrounding Northern suburbs. Our school community is culturally, linguistically and socio-economically diverse and we are united by the school's values of respect, courage and empathy. The school delivers a differentiated curriculum that builds the students' strengths through scaffolded learning with a strong focus on student engagement and wellbeing.

We have highly experienced and dedicated teachers and we are well resourced, offering small class sizes and a range of specialist and intervention programs. At Fitzroy Primary School we celebrate diversity and have a strong commitment to improvement through our French bilingual program that maximises students' potential through excellence in teaching.

## A message from the principal.

Fitzroy Primary School is located in the densely populated inner northern suburb of Fitzroy on the fringe of the Melbourne Central Business District. We are proud of our well-established French bilingual and specialist programs that support and encourage children in the development of French and English, as first and second languages.

Our vision at Fitzroy Primary School is to value language and culture within a community of practice where students become life-long learners that are literate, numerate and curious. We strive to develop articulate, socially responsible and resilient individuals who are working towards achieving their full potential as global citizens.

The George St and Napier St buildings provide ample spaces for students to work in different learning environments and are set in attractive grounds that provide a range of active and passive play spaces for students. Our community work together on environmental sustainability projects, including the harmony garden and kitchen garden, composting units and water tanks.

The school caters for both local and international students from culturally and linguistically diverse families and there is a growing cohort of students whose families are employed in professional careers.

***Our three core values of respect, courage and empathy equip our students to meet the needs of their future.***

The school operates in multi-age groups across grade levels and is an inclusive community that fosters belonging, where staff and students are known to each other. This philosophy is expressed through the school's commitment to:

- A curriculum that is child centred with a strong commitment to multiculturalism and global citizenship, through our French bilingual program and English as a second language;
- Teaching strategies based in inquiry learning, differentiated teaching, student directed learning, cooperative and shared learning;
- Differentiated, personalised learning through combinations of flexible, multi-age, multicultural, mixed ability classrooms;
- Use of ICT, specialist teachers, extra-curricular opportunities, excursions and camps to extend learning to beyond the school boundaries;
- Teaching and learning in programs that are responsive to individual needs and differences.



# Learning at our school.

*Our French bilingual program delivers all areas of the Victorian Mathematics Curriculum in French. Students are exposed to mathematical language in French and English which develops their vocabulary and conceptual understandings within the context of a French bilingual classroom setting.*

## Overview of the French Bilingual Program Literacy

Fitzroy Primary School provides the opportunity for students to enhance their Literacy and Numeracy skills whilst developing their intercultural capabilities through a range of classroom activities where the Victorian Curriculum is delivered in French.

Learning French at Fitzroy Primary School:

- facilitates students' development of critical thinking, creativity and problem solving skills
- develops an understanding of how language is constructed teaches students about other people, their ideas and ways of thinking
- enhances employment and career prospects
- contributes to social cohesiveness through better communication and understanding
- contributes to economic, diplomatic and strategic development.

### *The Fitzroy Primary School model*

Fitzroy Primary School delivers an established French Bilingual Program for students to learn the Victorian Curriculum in French across three days per week. While the school transitions to bilingual instruction for all students, those in older year levels participate in one hour of French LOTE weekly. For students who are learning French for the first time, the school provides additional classroom support by native speaking staff.

Bilingual students who come to school speaking French fluently are extended through differentiated and personalised learning. We also provide French Literacy support for all students across F/1, delivered by classroom teachers in consultation with the school's Literacy support team. Developing the leadership capacity of our F/1 teaching team to coach and mentor each other, whilst enhancing key curriculum and assessment practices in French, is a strategic focus and will result in improved outcomes for all students.

Literacy is essential for deep learning in all curriculum areas through which shared beliefs and understanding about teaching and learning are developed. It contributes to the creation of confident communicators, imaginative thinkers and informed citizens.

Literacy refers to reading, writing, speaking, viewing and listening effectively in a range of contexts. In the 21st century, the definition of literacy has expanded to refer to a flexible, sustainable command of a set of capabilities in the use and production of traditional texts and new communications technologies, using spoken language, print and multimedia.

At Fitzroy Primary School our instructional model is consistently implemented across all F-6 classrooms. In Literacy, daily Reading and Writing workshops develop student outcomes through learning intentions and success criteria, explicit teaching, regular conferencing with the teacher and personalised learning goals. Every classroom is well resourced with a library of French and English texts and students are supported to select books that are engaging, whilst challenging their Reading skills.

Staff ensure that all students experience success by teaching students to analyse, understand, communicate and interact with others and the world around them.

Collaborative planning is utilised to develop authentic literacy learning experiences with cross-curricular connections. Student voice and agency is valued and utilised to support literacy instruction and acquisition, including the use of ICT skills as a vehicle to learn and share.

Additional assistance is provided by the Literacy Support team for students' learning in Reading, Writing and Oral Language through targeted small group work in both English and French.

## Numeracy

Numeracy is the knowledge, skills, behaviours and dispositions that students need in order to use mathematics in a wide range of situations. Number, measurement and geometry, statistics and probability are core aspects of mathematical experiences in everyday personal, study and work situations. Equally important are the essential roles that algebra, functions and relations, logic, mathematical structure and working mathematically play in students' understanding of their natural and human worlds, and their interaction between them.

At Fitzroy Primary School, our Numeracy program equips students for their future and supports them to reach their potential. Our students are exposed to increasingly sophisticated and refined mathematical understandings, fluency, reasoning, modelling and problem solving. These capabilities enable our students to respond to familiar and unfamiliar situations by employing mathematics to make informed decisions and solve problems efficiently.

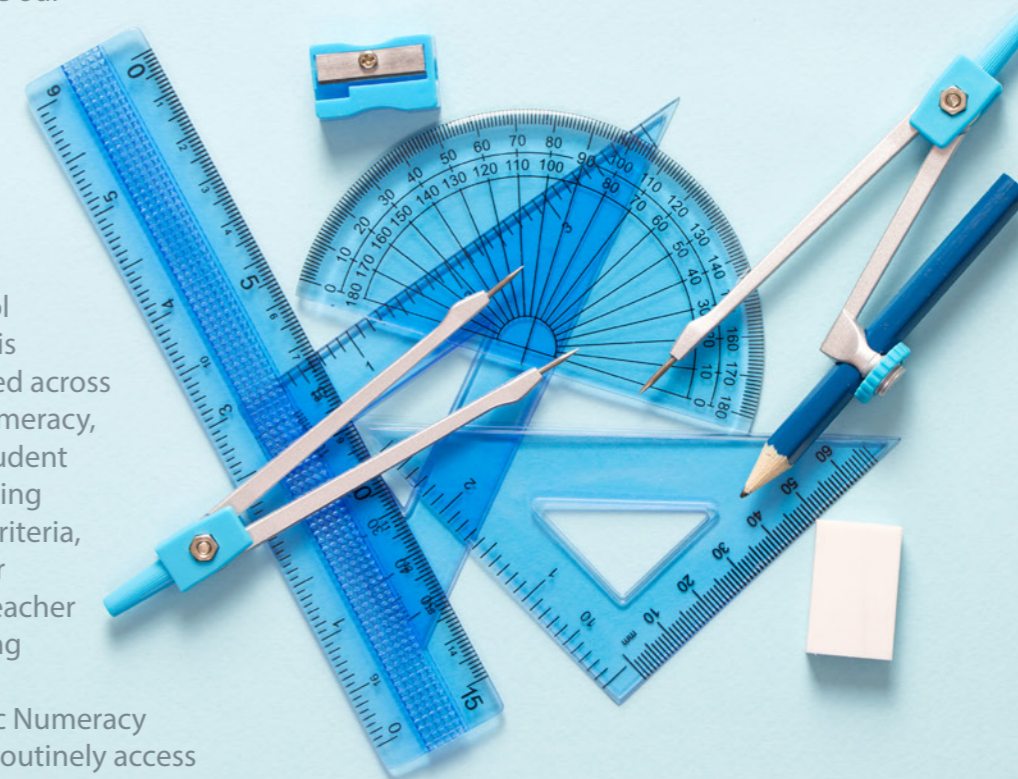
At Fitzroy Primary School our instructional model is consistently implemented across all F-6 classrooms. In Numeracy, daily lessons develop student outcomes through learning intentions and success criteria, explicit teaching, regular conferencing with the teacher and personalised learning goals. Each classroom is equipped with specific Numeracy materials that students routinely access to support their learning.

## Inquiry

Fitzroy Primary School implements inquiry based learning that is student centred, follows the natural process of inquiry, and builds on students' ability to gather and process information, and solve authentic problems within the context of global citizenship.

The focus is on 'how we know' rather than 'what we know' with students actively involved in the construction of their knowledge. Student voice drives the learning through questioning and follows the process of exploration, investigation and searching for answers.

**Students become lifelong learners who have a voice, can influence change and engage with their world in the 21st Century.**





# Specialist programs.

## French LOTE

The linguistic skills of listening, comprehension and conversation in the French language are emphasized in our LOTE program for students. This occurs through stories, games, songs and role plays. In the later years reading and writing in the language are added. We use a gesture-based methodology to teach vocabulary. It is a hands-on, engaging, verb-based method to teach French.

## Health and Physical Education

We pride ourselves on offering a broad range of health and sporting opportunities for students to develop their motor skills and increase their level of fitness. Students develop their movement capabilities, personal and social skills, sporting knowledge, motivation and confidence to engage in healthy activity throughout their lives. Through games based play, students learn to coach and mentor each other on the field and demonstrate the school's value of respect in a sporting context.

Participating in physical activity, games and sport contributes to a sense of community and social connectedness which are vital components of improved wellbeing. At Fitzroy Primary School we connect with local clubs and sports organisations to invite expert coaches in to run clinics throughout the term. This provides a pathway for students beyond the school who wish to pursue a particular sport or are showing a natural talent.

## Kitchen Garden and Sustainability

At Fitzroy Primary School our students discover the pleasures of hands on food education, through regular classes in a flourishing vegetable garden and a home style kitchen classroom.

Students learn to build and maintain a garden according to organic principles, and to grow and harvest a wide variety of vegetables, fruits and herbs. An abundant vegetable garden is created within the school grounds to provide edible, aromatic and beautiful produce for the school kitchen. The creation and care of the garden teaches students about the natural world, its wonders and how to cultivate and care for it in a sustainable way. For children who live in the inner city, working in a large garden provides the opportunity to experience the cycle of food from seed to plate.

In our kitchen, students prepare a range of delicious dishes from the seasonal produce they've grown. The finished meal is arranged with pride and care on tables and is a time for students to enjoy the fruits of their labour, and each other's company and conversation. Cleaning up and washing dishes is also part of the fun.

Experiences in the kitchen and garden classes support and extend learnings across subjects such as English, maths, science, history and languages through the inquiry curriculum. Students learn to calculate, measure, analyse and articulate their experiences in a real-life context as they engage with new cultures through enticing flavours, leading to intercultural understanding.



## Performing Arts

### Music

Music exists distinctively in every culture and is a basic expression of human experience. Students' active participation in music fosters understanding of other times, places, cultures and contexts. Students look

at music from around the world and how these different techniques and instruments have influenced the music they listen to now. They work in small groups to compose and record their own music. Students look at notes on a keyboard and how elements such as tempo and pitch can affect a piece of music.

### Dance

Students learn about why people dance and how dance can be used to tell a story. They look at Indigenous Stories and how people from different cultures express themselves through dance. Students use choreographic devices to assist them in portraying a message through dance. They work in small groups to choreograph, perform, revise and adapt dance sequences in time with the music. Students look at varying dance forms/genres and how they have contributed to the evolution of dance.

## Drama

Students are introduced to drama through games and improvisation. They learn about a number of drama elements including role, situation and focus. Students explore basic improvisation techniques and perform short improvisations based on familiar themes and topics. Students look at mime and comedy and how these elements also shape a character.

At the end of each year students perform in a whole school performance that ties all three of these elements together. This is an opportunity for every student to showcase their learning in our Performing Arts program.

## Visual and Media Arts

At Fitzroy Primary School teaching practice in the visual arts is explicit and purposeful. Learning is underpinned by the belief that all students can master the skills, knowledge and understandings from the content and outcomes of the curriculum.

Our well-equipped and resourced art room provides multiple opportunities for students to experience a range of visual arts options, including craft and design. Students create visual art works that communicate, challenge and express their own ideas. Our well regarded Art Show every year is testament to the quality of our Arts program.



## STEM – Science, Technology, Engineering and Mathematics

Development of STEM skills at all stages of life inspire curiosity and creativity. Through an exciting and engaging STEM education, students at Fitzroy Primary School acquire skills that will give them an edge in their future so they can be innovative and use new and emerging technologies to solve problems and extend their knowledge and understanding.

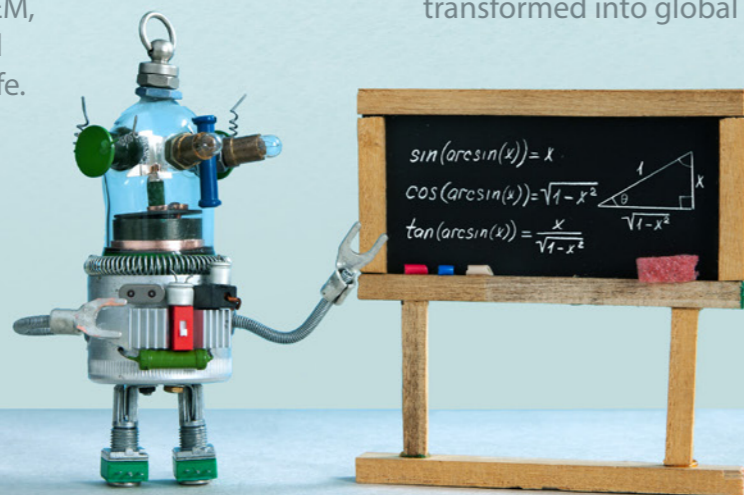
Across Victoria there is a greater need for STEM capabilities than ever before. At Fitzroy Primary School we nurture the next generation of innovative and critical thinkers, and experts in design and digital technologies.

STEM covers a wide range of disciplines across the Victorian Curriculum, which are increasingly in demand in a knowledge-based economy and a rapidly changing world.

Over time, our STEM program aims to prepare students to reach their potential and provide the opportunity to engage with the following fields:

- medical technology and pharmaceuticals
- new energy technologies
- transport, defence and construction technologies
- food and fibre
- international education
- professional services.

Young children experience rapid brain development and acquire skills at a faster rate than at any other time in life. Children are born curious and ready to explore the world around them. An emphasis on developing STEM skills in the early years can encourage children to feel positive and enthusiastic about STEM, leading to interest and achievement later in life.



## Technology and digital literacy

We live in a technological world where digital literacies are integral tools in the learning process and have the potential to extend student learning capabilities, engaging them in understanding concepts and processes in areas of learning and facilitating change in learning, thinking and teaching.

At Fitzroy Primary School, using digital literacies as tools for learning enables students to:

- efficiently and effectively access digital information to assist with investigating issues, solving problems and decision making
- produce creative solutions to support learning and develop new understandings in areas of learning
- communicate, share and work collaboratively in local and global environments
- understand the legal, ethical and health and safety implications of using digital literacies and their responsibilities as users and developers
- develop new thinking and learning skills to support learning.

Our vision for the use of digital technologies at Fitzroy Primary School is to actively respond to new opportunities and initiatives as they emerge and to develop the knowledge, understanding and capabilities of all students to become confident, competent and responsible users. Access to digital technologies is readily available within and beyond the school environment to allow for “anytime, anywhere” learning. It is embedded into every day activity; used to personalise the student learning experience towards improving student learning outcomes and with learning environments being transformed into global communities.

## Social and emotional learning

At Fitzroy Primary School our positive school culture is predicated on continually improving as a learning community, with the implementation of positive behaviour support and engagement strategies that enable improved student learning outcomes and enhance student health and wellbeing.

Opportunities that contribute to the school and effectively engage students in their learning include:

- pro-social behaviours which are promoted through programs such as: sports, art, cooking, gardening, science and music, dance and drama.
- student leadership programs such as: Junior School Council as well as other roles of responsibility for students to influence change within the school community
- proactively engaging families to be involved in the school's programs and community events
- intervening early to identify and respond to student needs for social, emotional and behavioural support
- students being engaged and feeling connected to the school community
- recognising and responding to the diverse needs of our students through the Program for Students with a Disability (PSD) program
- developing intensive literacy and numeracy improvement strategies and implementing such strategies as part of the school improvement agenda
- attending professional learning to ensure strategies and approaches are adopted and implemented

## School agreements and values

Six school agreements are implemented across the school community to promote pro-social behaviour and complement the school's values of respect, courage and empathy. The key focus is on rewarding effort, with teacher talk to develop student understanding. A visual chart that is displayed in every classroom enables students to manage their behaviour and make appropriate choices with the help of their teacher. The class tracking chart is also used in specialist programs.

In all classrooms these are linked to personal and communal responsibility within and outside the classroom. These six school agreements are underpinned by effort to learning and behavior being noticed and rewarded by staff.

1. Hands, feet and objects to yourself
2. Listen and participate attentively
3. Follow directions the first time
4. Be in the right place at the right time
5. Be safe, kind and honest
6. Persist with learning tasks

## Three step telling

Students are actively encouraged to use this strategy to manage themselves in difficult situations. By making the situation better, students are empowered to make good choices.

1. Stop it I don't like it
2. Stop it or I'll tell an adult or teacher.
3. I'm telling the adult or teacher now.

## Restorative practice

Restorative practice is an approach to dealing with inappropriate behaviour that empowers students to take responsibility for their behaviour and take action to repair any harm. At Fitzroy Primary School, restorative practice is used as a strategy for maintaining healthy relationships and to repair relationships that may have been damaged by making the situation worse. Students are supported by teachers throughout the restorative process and over time, independently use the techniques to maintain healthy and respectful relationships.

## Respectful Relationships

Respectful Relationships promotes and models respect, positive attitudes and behaviours. It teaches our children how to build healthy relationships, resilience and confidence. We use the Resilience, Rights and Respectful Relationships learning materials to explicitly teach social and emotional learning and positive social interactions in the classroom. This learning ties in with the Health and Physical Education, Critical and Creative Thinking and Personal and Social Capability areas of the Victorian Curriculum.



## Overview of School Council

Government school councils are established for the purposes of the Education and Training Reform Act 2006 (Act) and operate under the Act, their constituting Orders, the Education and Training Reform Regulations 2007 (Regulations) and Government policy.

Key responsibilities of School Council:

- finance: overseeing the development of the school's annual budget and ensuring proper records are kept of the school's financial operation
- strategic planning: participating in the development and monitoring of the school strategic plan
- policy development and review: developing, reviewing and updating policies that reflect a school's values and support the school's broad direction outlined in its strategic plan

The functions of School Council include:

- raising funds for school related purposes
- maintaining school grounds and facilities
- entering into contracts
- reporting annually to the school community and the Department
- creating interest in the school in the wider community
- representing and taking the views of the community into account
- regulating and facilitating after-hours use of school premises and grounds
- operating a children's service at the school.

### Subcommittees of School Council:

The council has four committees – Education, Buildings Grounds and Environment, Finance and Fundraising. Each committee meets regularly and meetings are open to all parents and carers.

#### *Education subcommittee*

This subcommittee oversees the development and review of school policies relating to teaching and learning, student welfare and school operations.

#### *Buildings and Grounds subcommittee*

The Buildings and Grounds subcommittee group takes responsibility for maintenance and development of the school buildings and grounds to enhance it's profile in the community.

#### *Finance subcommittee*

The Finance subcommittee considers budget submissions in the light of Council policies and priorities and makes recommendations to Council. In addition, this subcommittee monitors the school's budget processes, spending and income.

#### *Community Engagement and Fundraising subcommittee*

The Community Engagement and Fundraising subcommittee's main role is to build and strengthen relationships within the local community, seek new fundraising opportunities and establish Fitzroy Primary School as the destination school for both local families, and for families travelling to Fitzroy to access our quality French bilingual program.

### Before/After school care

Big Childcare is in partnership with Fitzroy PS where they offer before school, after school, holiday and curriculum day care onsite for all students. Their educators focus on the individual needs and interests of children, by offering stimulating activities such as craft, cooking, gardening, sports activities, indoor/outdoor play and much more. They are committed to ensuring that children in their care have fun and enjoy being part of an engaging and safe program. Big Childcare will operate before school, where breakfast is provided prior to 8am and after school, where a healthy but tasty afternoon snack is on offer. The morning session runs from 7 – 8:45am and the afternoon session from 3:30 – 6pm.

### School tours

School tours are held with the Principal to showcase student learning across a range of our classroom and specialist programs. Please contact the office if you wish to attend a tour.

## Transitioning to Fitzroy Primary School

Fitzroy PS offers three transition sessions for our enrolled children. We offer a comprehensive program for both parents and our future students to ensure there is a smooth transition from Kindergarten to Foundation.

During the first session the children will go to their new classrooms and participate in English literacy activities that will provide lots of opportunities for social interaction. For their second session, the children will gather together with their new friends for songs, action rhymes, movement games and stories in French. During the final session, students will experience our specialist programs via a tour of the school. Children will visit the Visual Arts room, Kitchen Garden, PE program and Napier St classrooms.

Over these three sessions, whilst your child is in their classroom, parents will experience presentations from the Principal, the current Foundation classroom teachers and have an opportunity to ask questions and socialise with other families.

We are proud of our transition sessions at Fitzroy PS and the teachers utilise this time to get to know your child and to gather information that will support their transition from Kindergarten to Foundation.

## Year 6-7 Transition

The year 6-7 transition program supports students and families with the next important step of your child's educational journey. The program begins in term four with the year 6 students covering topics related to high school transition, routines at high school, how to follow timetables and the nature of high school learning.

Our year six students visit local high schools to familiarise themselves with the facilities and experience a range of programs on offer. Students and their families are supported throughout the decision making process and graduate from Fitzroy PS equipped with the skills required to thrive in their new school. The transition program provides support for parents and carers when selecting a high school for their child. Grade six teachers have regular and ongoing communication with high school coordinators and support students who may need to go through an application process, including interview preparation. At the end of the year, all students spend a full day at their high school in preparation for the following year. We work closely with families and high schools to ensure a smooth transition to high school for our graduating students.





# Fitzroy Primary School

319 George St Fitzroy VIC 3065  
P 03 9417 4222 F 03 9419 3180  
[fitzroy.ps@edumail.vic.gov.au](mailto:fitzroy.ps@edumail.vic.gov.au)  
[fitzroyprimaryschool.vic.edu.au](http://fitzroyprimaryschool.vic.edu.au)

Proudly supported by:



Nelson  
Alexander