

# The elephant shrew

By Sienna Fitzallen

# context

.what it is

.appearance

.diet

.habitat

.lifespan

.Predator

.when it went extinct

.how long their pregnant

.as young

.funfacts

.special surprize



# What is a elephant shrew

Elephant shrews also known as jumping shrews or sengis are mini insectivorous mammal that are native to Africa this little animal belongs to the family macrosceiliddea in the order macrosceildea



# Appearance

Elephant shrews are small mammals with a compact body and large head. The long narrow snout moves in a circular motion and it is extremely sensitive. Nostrils are located at the tip of the nose and long vibrissae are present at the base of the snout. Eyes and ears are well developed and auditory bullae are large.



# Diet

The elephant shrew eats leaf litter invertebrates such as ants, termites, beetles, spiders, millipedes and earth worms. And unlike other small mammals the elephant shrews feeds during the daylight.



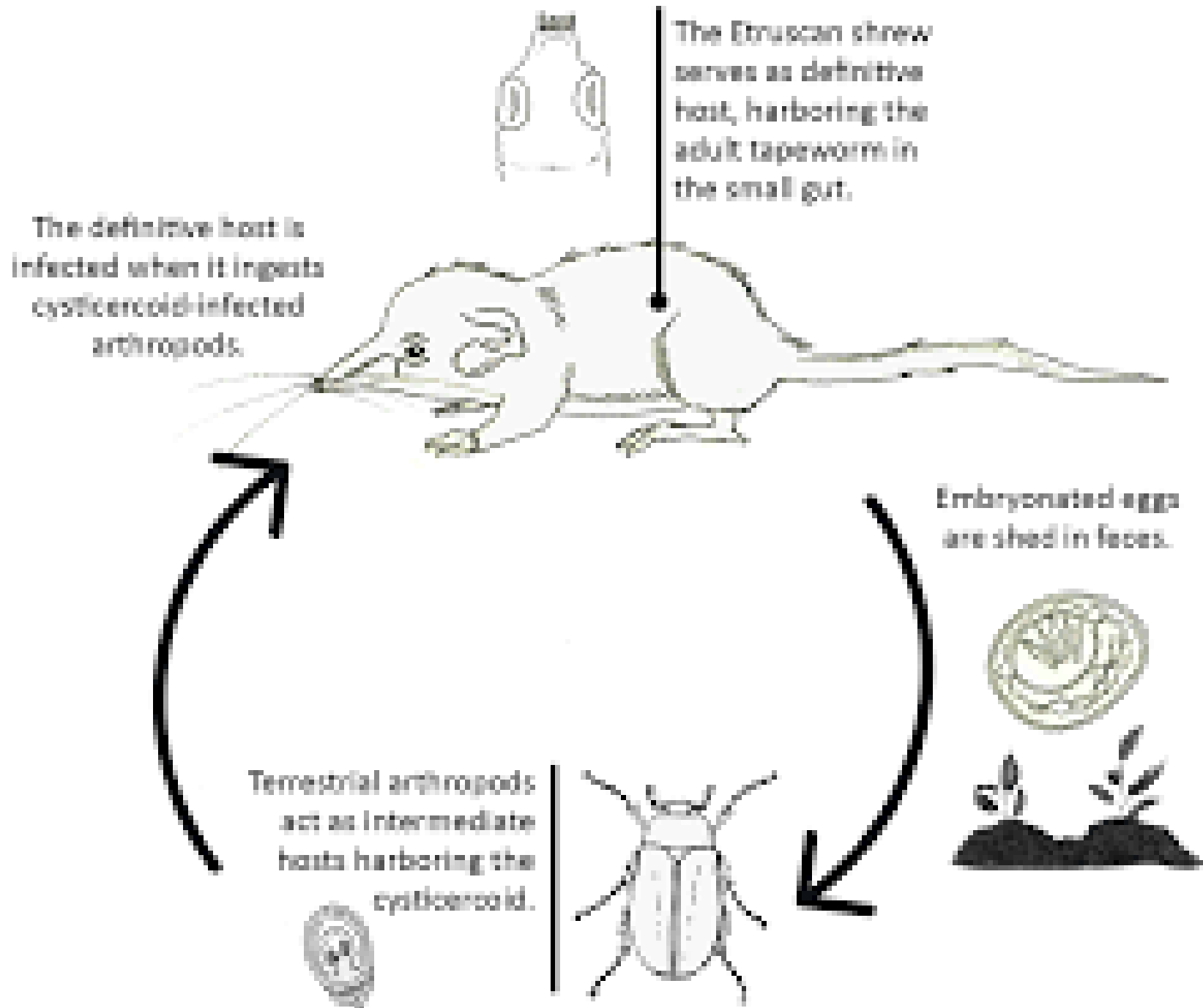
# habitat

Elephant shrews live in southern Africa in Namibia, Botswana and south Africa they prefer a habitat where they can burrow into sandy soil including arid semi-desert, dry grass and shrub land.



# Life span

These tiny little mammals have a very short lifespan making them live between 1 and two years in the wild and they can live 3-4 years in human care.



predators

Elephant  
shrews most  
common

predators are  
snakes and  
raptors





# When they went extinct

One species, the North African elephant shrew, remains in the semi-arid, mountainous country in the far northwest of Africa. The Somali elephant shrew went unobserved from 1968 to 2020 but was once again was founded by a group of scientists in Djibouti.



# How long are elephant shrews pregnant

After a gestation of 56 days, short-eared elephant shrews give birth to a litter of one or two during the wet season (August and September). Babies are born fully furred with their eyes open, like tiny miniatures of their parents. Mothers return from foraging several times a day to nurse young.



As young  
At birth they are  
slightly smaller  
than your finger  
tip



Fun facts  
.short-eared  
shrews clean  
themselves  
with dust  
.their long tails  
are lined with  
knobbed  
bristles



# Quiz time



What is the main predators of the elephant shrew

A. Snakes and raptors

B .Wild dogs

c. Other elephant shrews



Answer was  
snakes and  
raptors



Where do they prefer to burrow

A . dirt

B . Under trees

C . Sandy soil





Answer  
sandy oils



Last question how big are they at birth



A . As big as a cat

B . Slightly smaller than you thumb tip

C . As big as a mouse

The answer was  
slightly smaller  
the your finger tip



That is the end of my power point  
thank you for listening and I hope you  
learned some fun facts about this little  
mammal and now enjoy the rest of  
your day

