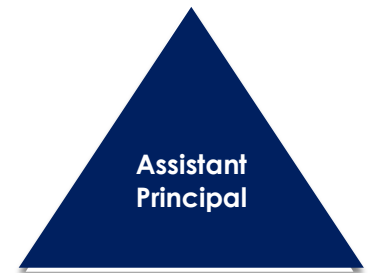
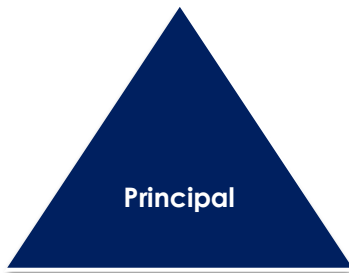


Principal Team



Senior Leadership / School Improvement Teams

Achievement SIT

Anthony - Principal

Kelly - LT (Curriculum & Assessment / 11-12 & Specialists T&L Support)

Gabi - LS (Professional Learning / P-10 T&L Support)

Engagement SIT

Anthony - Principal

Matt – Business & Operations Manager

Bern - LT (Transitions & Partnerships)

Wellbeing SIT

Robyn – Assistant Principal

Julie - LT (Disability Inclusion / P-4 Wellbeing Support)

Michelle - LT (Mental Health & Wellbeing / 5-8 Wellbeing Support)

Helena - LT (Community Engagement / 9-12 Wellbeing Support)

Leadership, Management & Support

Teaching & Learning

Kelly - LT (Curriculum & Assessment / 9-12 & Specialists T&L Support)

Gabi - LS (Professional Learning / P-8 T&L Support)

Jaclyn (P-2), Gabi (3-4), Uzer (4-6), Ben (Specialists) – Assistant LS (Primary PLT Leaders)

Eva (7-8), Gabby (9-10), Vu (VPC), Jo (ASDAN) – Assistant LS (Secondary PLT Leaders)

Sarah - Assistant LS (Literacy Specialist)

Jacqui - Assistant LS (Numeracy Specialists)

Administration & Operations

Halina - Principal EA

Karen - OHSC Project Manager (0.5) & Attendance Officer

Anna - Finance Manager

Kristina - HR Manager & SDTP/SSR/Uniform

Phil C - Facilities Manager

Graeme - Grounds & Maintenance

Pushp - IT Manager

Andy – IT Specialist Technician (TSSP)

Engagement & Wellbeing

Michelle - LT (Mental Health & Wellbeing / 5-8 Wellbeing Support)

Helena - LT (Community Engagement / 9-12 Wellbeing Support)

Alex - Social Worker / Child Safety Officer

Marg - Family Liaison Officer

Ian - Assistant LS (Mental Health & Fitness)

Jackie - Mental Health Practitioner

Sam - Youth Worker / Medical Officer

Cam - Hands On Learning

Tori & Laura - Art Therapists

Senior Secondary

Vu - Assistant LS (Jobs, Skills & Pathways)

Kathy - Offsite Learning (VET/SBAT)

Thana - Work Experience Coordinator

Christine - Admin & NDIS Navigator

Transitions & Partnerships

Bern - LT (Transitions & Partnerships)

VACANT - Assistant LS (PSD/DI Coordinator)

Ingrid - Enrolment/PSD Admin

Allied Health & Inclusion

Julie - LT (Disability Inclusion / P-4 Wellbeing Support)

Laura - Assistant LS (Inclusion Specialist)

Rachel & Briana - Speech Pathologists

Julia - Occupational Therapist



Collaborative Learning Communities

Primary



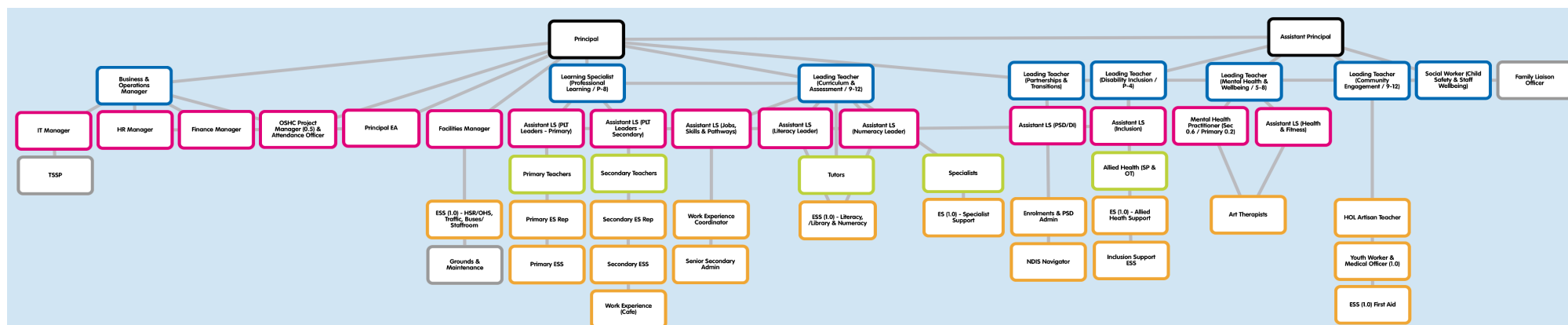
Secondary



Reporting Lines 2023

PDP Manager	Direct Reports
Principal	Principal Team, Leadership (Learning), Managers
Assistant Principal	Leadership (Wellbeing)
Business & Operations Manager	Admin Staff
Learning Specialist	Teachers (Groups)
Leading Teachers	ESS (Groups) & Other Positions of Responsibility (POR)

PDP Reporting Lines



School Council

Who	Office Held	Category
Nerida Auld	President	Parent
Joseph Lawrence	Vice-President & Treasurer	Parent
Anthony Jackson	Executive Officer	Principal / DET Representative
Robyn Procak	Assistant Principal	Non-Voting Guest
Matt Gravatt	Business Manager	DET / Staff
Halina O'Neill	Minute Taker / Secretary	DET / Staff
Sarah Jarman	Member	Parent / DET
Peter Auld	Member	Parent
Cathy Sama	Member	Parent
Lorretta Sultana	Member	Parent
Marg Keatley	Member	Community
VACANT	Member	Community
VACANT	School Captain	Student
VACANT	School Vice-Captain	Student

Positions to be held: President, Vice President, Treasurer & Executive Officer/Principal