

For Year 12 Leavers

Have a plan B

Worried you won't receive the ATAR to get into your desired course? It is important to always have a plan B just in case. Read over the following information to develop your plan and to understand your pathway options.

Options available at all universities

Articulated vocational pathways

You can gain access into eligible Bachelor degrees by completing a pathway course through a TAFE institute or private college (usually at Diploma or Advanced Diploma level).

You can often gain between .05 – 2 years credit towards your degree.

Single unit study

You can enrol in single units from the first year of your desired course.

When you complete the units and apply for the degree program, the university will take into consideration the marks you receive and may also give you credit. You can also apply to study single units through Open Universities Australia via distance - <http://bit.ly/1WakBAO>

Bonus points through special consideration

If you applied for the special consideration scheme when you completed your Tertiary Admission Centre application by the due date, you may be eligible for additional ATAR bonus points or additional consideration through the selection process.

This includes the Special Education Access Scheme (SEAS) via VTAC (closed) and the Educational Access Scheme (EAS) via UAC (open).

Internal transfer

You can start a degree related to the degree you would like to study that has a lower ATAR and then transfer to your desired degree at the same university with credit. There is no guarantee you will receive a place in the course you would like to transfer into.

Example:

- Bachelor of Arts (60.30) into the Bachelor of Laws/Bachelor of Arts (91.50) at La Trobe University, Melbourne campus (ATARs may change for the 2017 intake).

You may also be able to transfer between campuses, as often some will have lower ATARs for the same course.

External transfer

You can start a degree that has a lower ATAR at one university and then apply to transfer to your desired degree at the university you would like to study at.

You will be selected based on your Grade Point Average (GPA) from your first year of studies. There is no guarantee you will receive a place in the course you would like to transfer into.



WANGANUI CHANGE OF PREFERENCE

Results Mon. Dec. 12th

Cros, Greg Bristol and the HL's will be available from Mon 12th at 10am until the end of the week. Pop in and see us or phone 5820 9900

BBQ Wed. Dec 14th @ SLC from noon

Change of preference & catch up BBQ
Cros, Bristol, HL's and staff from La Trobe Shepparton as well as GOTAFE's Skills & Job Centre

Click on the University to go straight to that page

[Charles Sturt University](#)

[Monash University](#)

[University of Melbourne](#)

[Deakin University](#)

[Victoria University](#)

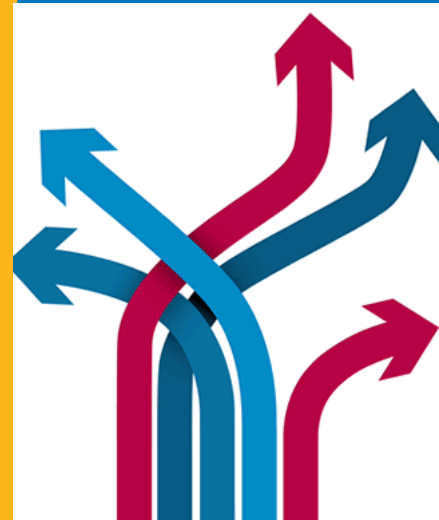
[RMIT](#)

[La Trobe University](#)

[Swinburne University](#)

[Australian Catholic University](#)

[Federation University Australia](#)



Charles Sturt University

Information

- Locations: Albury-Wodonga, Bathurst, Orange, Wagga Wagga, Dubbo, Port Macquarie, Wangaratta
- Contact: 1800 334 733, inquiry@csu.edu.au

TAFE to University

- CSU has articulation arrangements with 11 TAFE institutes
- Higher level TAFE study will be taken into consideration when applying for eligible Bachelor degrees, even if the TAFE study is in an unrelated field.
- For information about integrated and articulated TAFE to CSU programs, go to <http://bit.ly/2fDU7Eq>

Diploma of General Studies

- Students enrol in the CSU Pathway Program: Diploma of General Studies. This course is offered in Albury-Wodonga, Wagga Wagga, Bathurst and Port Macquarie and is run in partnership with TAFE NSW and Wodonga TAFE.
- The course is designed to prepare students for degree studies. Graduates of the Diploma gain guaranteed entry into most CSU degrees, <http://bit.ly/2g9tUii>

Single Subjects

- You can undertake single subjects through direct entry to CSU. Successful completion of the subjects may boost your chances of gaining entry into your desired CSU degree, <http://bit.ly/2ga4NyA>

Bonus Points

- Regional students receive 5 bonus points added to their ATAR, <http://bit.ly/2gxJvvg>

Flexible Degrees

- CSU offers five flexible degrees with lower ATARs that can lead to graduate level study - Arts, Business Studies, Education Studies, General Studies (Science), and Liberal Studies (Arts), <http://bit.ly/2gyxp1l>

Indigenous Access Program

- This is a three-day program for Indigenous students - there are spaces left for the Wagga Wagga campus program, <http://bit.ly/2frMXrR>



Monash University

Information

- Locations: Berwick, Clayton, Caulfield, Peninsula, Parkville, Malaysia, South Africa, China, India
- Contact: 1800 666 274, <http://bit.ly/1GHZ3tl>

University Diploma pathway courses

- Diploma of Tertiary Studies: One year course. Prepares students for pathways into selected Business, Education and Nursing degrees with credit, <http://bit.ly/2gxT2CQ>
- Diploma of Higher Education Studies: One year course. Prepares students for pathways into selected Science and Education degrees with credit, <http://bit.ly/2gBzbA3>
- Monash College: Completion of a one year Diploma in Arts, Arts, Design & Architecture, Business, Engineering or Information Technology will guarantee access to second year of the eligible Bachelor degree, <http://bit.ly/2fWtWdn>

Single Subjects

- Once you complete two single units of study, you can apply for a range of Bachelor degrees, <http://bit.ly/2fE8E34>

Monash Guarantee

- Applicants may be eligible for the Monash Guarantee if they have completed a SEAS application via VTAC (now closed). The Monash Guarantee provides guaranteed entry into selected courses with a lower ATAR (conditions apply), <http://bit.ly/2bablf6>

Law Pathway

- For eligible students. Can study the pre-law pathway through the Bachelor of Arts, Bachelor of Science or Bachelor of Commerce (you will need to select the correct courses via VTAC), <http://bit.ly/2flhLmz>

Indigenous Pathway Programs

- Information on the Monash Indigenous Access Program and Indigenous Non-Award Pathway, <http://bit.ly/2fs1cg2>

TAFE to university

- Completing a Certificate IV, Diploma or Advanced Diploma may boost your chance of entry into a Monash degree. You should ensure that the TAFE course you study is graded, <http://bit.ly/2fWv5kV>



University of Melbourne

Information

- Locations: Parkville, Burnley, Southbank, Creswick, Shepparton, Dookie, & Werribee
- Contact: 13 6352, <http://bit.ly/2gariDs>

Diploma in General Studies

- 12-month program, which can guarantee entry into selected Bachelor degrees. Suitable for students who don't meet the required ATAR or don't have the required prerequisites. Available at the Dookie campus and at partner institutions in Wodonga, Benalla, Shepparton, Wangaratta and Seymour. Minimum ATAR for 2017 is 50, <http://bit.ly/2gyWkSB>

Access Melbourne

- If you have completed a SEAS application via VTAC (now closed) you may be eligible for Access Melbourne, which provides guaranteed entry into selected courses with a lower ATAR (conditions apply), <http://bit.ly/2gBAqPD>

Bridging Programs

- Online maths subject - taught by University of Melbourne academics and can be used to meet the Mathematical Methods pre-requisite for courses, <http://bit.ly/2fTmNMY>. You can also achieve the Mathematical Methods equivalent through the UniLearn program, <http://bit.ly/2gnGLOk>
- Community Access Program: you can complete prerequisites through other subjects such as Biology, Chemistry and Physics, <http://bit.ly/2fWCC3f>

Indigenous Pathway Programs

- Information on Indigenous pathway programs including the Bachelor of Arts (Extended) and the Bachelor of Science (Extended), <http://bit.ly/2flkL2x>



Deakin University

Information

- Locations: Burwood, Geelong Waurm Ponds, Geelong Waterfront, Warrnambool and several regional locations
- Contact: 1800 693 888, <http://bit.ly/2gl1gVf>

Associate Degrees

- Associate Degree in Arts: This two-year course has a lower ATAR and can provide entry into the Bachelor of Arts or Bachelor of Criminology with credit, <http://bit.ly/2gOyC9h>
- Associate Degree in Education: This two-year course has a lower ATAR and can provide entry into eligible education degrees with credit, <http://bit.ly/2garlKb>

Indigenous Pathway Programs

- Learn about the Institute of Koori Education, <http://bit.ly/2fsmHgT>

TAFE to university

- Deakin has partnerships with several TAFE institutes, which allow you to articulate between approved TAFE Diplomas to eligible Bachelor degrees. You can also apply for recognition of prior learning for TAFE Diplomas from other institutions, <http://bit.ly/2fWC7Ge>

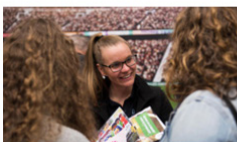
Deakin College

- Deakin has an agreement with Deakin College (a private college) where you can articulate from a 12-month Diploma in areas such as business, management, communication, communication, information technology, engineering, science, and health sciences, into the second year of an eligible Bachelor degree at Deakin, www.deakincollege.edu.au

Single Unit

- For information on studying single units and how this can improve your chances of gaining access to Bachelor degrees at Deakin, go to <http://bit.ly/2fln9WR>

Events



Events

Information evenings at Melbourne Burwood and Geelong Waurm Ponds



Events

Walk and talk tours at Geelong Waterfront and Warrnambool



Events

Drop-in session at Werribee Learning Centre



Victoria University

Information

- Locations: City (King, Queen, Flinders, Flinders Lane), Footscray (Nicholson & Park), Melton, St Albans, Sydney, Sunshine, Werribee, Sunbury, Broadmeadows, & Altona Meadows
- Contact: 1300 842 864, <http://bit.ly/2g4pjhg>

TAFE to University

- Victoria University has a TAFE division. For a list of TAFE pathways courses into university degrees in areas such as Arts, Business, Education, Engineering, Science, Health, Biomedicine, Law & Justice, and Sport & Exercise Science, go to <http://bit.ly/2gTTY4L>

Indigenous Pathway Programs

- Learn about Moondani Balluk and how staff can support prospective Indigenous students, <http://bit.ly/2gHmYdn>

Advanced standing and credit for prior learning

- Victoria University can recognise prior TAFE study and work experience. This may improve the chances of students gaining entry into Bachelor degrees, <http://bit.ly/2gHMePu>

Foundations at VU

- This is a fully funded 13-week course providing students with an alternative pathway if they didn't meet direct entry requirements, to reach their goal of studying a higher education undergraduate or diploma course, <http://bit.ly/2g4iiNj>

Removal of the ATAR as a selection tool for some courses

- VU has removed the ATAR as a selection tool for a large number of Bachelor degrees. Students must still satisfy subject prerequisites and study scores, as well as other requirements such as portfolios. To see which courses no longer require an ATAR, use the course search function on VTAC - www.vtac.edu.au

**THERE'S MORE
THAN ONE WAY
TO DEFINE
Victory**

Find a course >

Talk to us >



Talk to us about your options



Book a one-to-one
appointment



Attend the expo



Call the VU hotline
1300 VIC UNI



Chat online

Information

- Locations: Brunswick, Bundoora, City Campus, Vietnam, Barcelona
- Contact: 03 9925 2260, <http://inspired.rmit.edu.au/>

TAFE and Associate degrees

- RMIT has a TAFE division and also offers Associate degrees. For a list of pathway courses into Bachelor degrees in each faculty area, go to <http://bit.ly/2fKaq2E>

Advanced standing and credit for prior learning

- Students who complete a TAFE qualification at another institute can use this qualification to help improve their chances of getting into an RMIT program. Details on credit transfer can be found here: <http://bit.ly/2gikzHH>

Single Subjects/Short Courses

- To learn about the single subjects you can undertake to boost your chances of gaining entry into your desired Bachelor degree, go to <http://bit.ly/2gvNXYK>

Certificate IV in Tertiary Preparation

- 6-month course. Specialise in a selected stream of engineering, science, justice & legal or business. Completion provides a guaranteed pathway into eligible degrees providing certain conditions are met, <http://bit.ly/2gHqYuf>

[Speak to us](#) | [Pathways](#) | [Facts and FAQs](#) | [Apply now](#)



Change of Preference

Make your preference count

- ✓ Gain practical experience working on real projects
- ✓ Make the most of our pathways



The traditional path to university
isn't the only one.

If you didn't get the ATAR you needed there's still options available to help you apply for your dream course and start at RMIT from day one.

[Find your pathway](#)

La Trobe University

Information

- Locations: Albury-Wodonga, Bundoora, Mildura, Shepparton, Bendigo, Franklin St, City, Sydney
- Contact: 1300 135 045, <http://bit.ly/1HmZGig>

TAFE to University Pathways

- La Trobe University has articulation arrangements in place with 15 TAFE and private college institutions. If you complete an eligible course at one of these institutions, you will be guaranteed entry and credit towards the Bachelor degree (with conditions), <http://bit.ly/2fC0OeZ>

Tertiary Enabling Program

- Free 14-week program at regional campuses that can provide guaranteed entry into selected Bachelor degrees. Apply directly to La Trobe, <http://bit.ly/1PcE25H>

Single Subject Entry

- To learn about the single subjects you can undertake to boost your chances of gaining entry into your desired Bachelor degree, go to <http://bit.ly/2gHSmbA>

Priority Access Program

- Students who have applied for a course via VTAC may be eligible for bonus points through one of the following initiatives- Priority Schools Bonus Points, Priority Campus Bonus Points and Regional Schools Bonus, <http://bit.ly/2gj7GNO>

Campus Transfer

- You may be able to start your desired course at a La Trobe campus which has a lower ATAR then make a direct transfer into another La Trobe course with a higher ATAR at another campus, <http://bit.ly/2gj4How>

University Diploma to Degree

- You can complete a 12-month La Trobe University Diploma in areas such as Arts, Business, or Health Sciences at selected regional campuses. They have lower ATARs and can provide guaranteed entry into second year of selected La Trobe Bachelor degrees, <http://bit.ly/28XO2CG>

La Trobe Melbourne

- La Trobe University has an agreement with La Trobe Melbourne which is a private college. You can articulate from a 12-month Diploma in areas such as Bioscience, Business, Engineering, Health Sciences, IT, and Mass Media & Communications, into second year of an eligible Bachelor degree at La Trobe University, <http://bit.ly/2gHOabY>



Swinburne University

Information

- Locations: Croydon, Hawthorn, Wantirna, Sarawak Malaysia, Online
- Contact: 1300 SWINBURNE, <http://bit.ly/1NLW26l>

TAFE to University Pathways

- Swinburne has a TAFE division. To find out which TAFE course will provide a pathway into your desired Bachelor degree, locate the degree via the Swinburne course search function, then click on the pathways link. A list of Swinburne TAFE courses will be listed with the amount of credit you can receive towards the Bachelor degree once you complete the associated course (with conditions), <http://bit.ly/2fPSg2V>

UniLink Diploma

- You can complete an 8-month Swinburne UniLink Diploma in one of the following areas: Arts & Communication, Business, Design, Engineering, Health Science, Information Technology or Science. They have lower ATARs and can provide guaranteed entry into second year of selected Swinburne Bachelor degrees, <http://bit.ly/2fC3JVb>

Associate Degree

- You can complete a two-year Associate degree which has a lower ATAR in either Engineering, Health Science or Information Technology and this can guarantee you entry into third year of eligible Bachelor degrees, <http://bit.ly/2fC7wBQ>



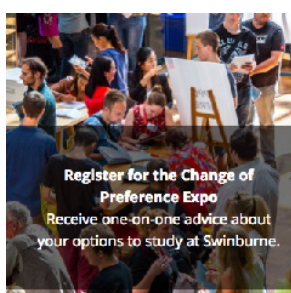
WHOSE LIFE IS IT ANYWAY?

CHANGE OF PREFERENCE EXPO

Find out why Swinburne is the creative, innovative and different choice for people who choose their own path in life.

Wednesday 14 December
11am - 4pm
Hawthorn campus

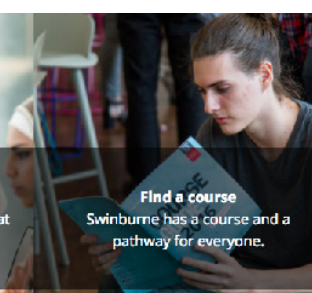
[BOOK NOW!](#)



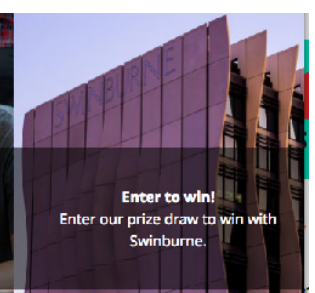
Register for the Change of Preference Expo
Receive one-on-one advice about your options to study at Swinburne.



Use our ATAR calculator
Reach your goals no matter what ATAR you achieve.



Find a course
Swinburne has a course and a pathway for everyone.



Enter to win!
Enter our prize draw to win with Swinburne.

Australian Catholic University

Information

- Locations: Ballarat, Melbourne, Canberra, Strathfield, North Sydney & Brisbane
- Contact: 1300 275 228, www.acu.edu.au/

TAFE to University

- ACU has articulation arrangements in place with several TAFE and private college institutions. If you complete an eligible course at one of these institutions, you may be guaranteed entry and credit towards the eligible ACU Bachelor degree (with conditions)
- ACUcom is the Vocation Education and Training unit of Australian Catholic University. Courses in Nursing, Education Support, Aged Care, Early Childhood, Fitness, Leadership and Management, TAE, First Aid and CPR are offered in Melbourne, Ballarat and Brisbane, <http://bit.ly/2gHN5TK>

Indigenous Pathway Schemes

- Aboriginal and Torres Strait Islander Special Entry Scheme: If you have identified as being Indigenous through VTAC or UAC, you may receive additional consideration through the selection process for eligible Bachelor degrees.
- You can apply directly for the Bachelor of Midwifery (Indigenous Studies) or Associate Degree of Business Administration (Indigenous Program). <http://bit.ly/2glbPJb>

Single Subjects

- You can undertake single subjects through direct entry to ACU. Successful completion of the subjects may boost your chances of gaining entry into your desired degree, <http://bit.ly/2glfaYK>

Bonus Points

- If eligible, you can receive bonus ATAR points without having to make an additional application outside of VTAC or UAC - Subject Bonus, Schools Relationship Bonus, Campus Bonus, Regional Schools Bonus, <http://bit.ly/2gjH8f9>



Federation University Australia

Information

- Locations: Mt Helen, SMB, Ararat, Ballarat Technology Park, Camp Street, Gippsland, Horsham, Stawell and Berwick
- Contact: 1300 333 864, <http://federation.edu.au/>

TAFE to University

- Federation University Australia has a TAFE and a university division. Articulation arrangements exist between selected TAFE and degree programs
- The University also has articulation arrangements in place with several external TAFE and private college institutions. If you complete an eligible course at one of these institutions, you will be guaranteed entry and credit towards the eligible Federation University Australia Bachelor degree (with conditions).

Open Access Scheme

- Applicants will receive a place in their desired course providing they meet prerequisite study scores and other required selection criteria (e.g., auditions, interviews, folios). The ATAR is not taken into consideration and not all Bachelor degrees are eligible, <http://bit.ly/2gUWW98>

Foundation Access Studies (FAST)

- If you don't meet the ATAR or prerequisite requirements for your desired course, you can complete the tertiary preparation FAST program over one semester. Once you complete the program, you may be eligible to articulate directly into your desired program (not all courses are eligible). Apply via VTAC, <http://bit.ly/1NPJT23>

VCAL Aspire

- For students who would like to complete the 12-month Senior VCAL at Federation University and the FAST program to be prepared to undertake a university course. Once completed, students will be able to apply for selected Bachelor degrees, <http://bit.ly/2fQh7U4>

Single Subjects

- To find out what single units may increase your chances of gaining access to your desired Bachelor degree, find your course using the course search function then click on the pathways/alternate entry link, <http://bit.ly/24hMag4>

