

**SOVEREIGN**

**HILL**

**LEARNING**

**Stay & Learn**

**MINER PACKAGE**

**Step back in time, uncover history and ignite curiosity on the Ballarat Goldfields.**

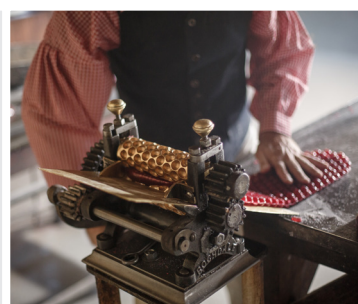
Learning at Sovereign Hill is aligned with the Victorian and Australian curricula, fostering connections that enhance knowledge and skills essential for developing confident, lifelong learners and informed, active citizens.

## 1 Night | 2 Days

**Museum Entry  
MULTI-DAY PASS**



**One Level 3-4  
Education  
Program &  
Teacher's Museum  
Guide**



**AURA Night Show &  
Teacher's Guide**



**Priority access to a  
Gold Pour**



**Sweets OR Candle  
Demonstration  
OR Red Hill Mine  
Experience**



**Candle Dipping  
OR Underground  
Quartz Mine Tour  
Experience**



**1-Night on-site  
Accommodation**



**1-Day  
Catering Package**

**Miner Package \$250** per student, price is based on a ratio of 10 students and 1 teacher, with inclusions as outlined above. Prices are inclusive of GST.

- **Curated Program:** Enjoy priority access to all available experiences or a seasonal equivalent to enhance student learning.
- **Flexible Pricing:** Your final price may vary based on group size, accommodation type and specific requests. Our Bookings Team will confirm the final price in response to any program customisations. Catering upgrades available.

**TO MAKE A BOOKING CONTACT** [education@sovereignhill.com.au](mailto:education@sovereignhill.com.au)

## Benefits of Sovereign Hill's immersive places and spaces for student learning and exploring:

- **Engaging Learning Environment:** Foster a deeper understanding of history through hands-on activities.
- **Enhanced Curiosity:** Unique settings inspire exploration and encourage learners to question and seek knowledge.
- **Cultural Connection:** Learners gain insights into the lives of Aboriginal People, early settlers and worldviews.
- **Interactive Experiences:** Engaging with costumed interpreters and interactive exhibits creates memorable learning moments.
- **Teamwork and Collaboration:** Group activities foster communication and social skills, making learning a shared adventure.
- **Personal Growth:** Experiences build confidence, encourage critical thinking and helps students become informed active citizens.



### The Diggings: 1851 - 1854

Shares the stories of migrants seeking fortune during the gold rush, highlighting the challenges of life in a tent city as they pursued a better life, changed the environment and developed mining techniques.



### Chinese Village: 1857 - 1860

Highlights the cultural and social living conditions of Chinese immigrants during the gold rush, showcasing their struggles and successes within the broader narrative.



### Main Street: 1855 - 1861

Showcases the transition from the diggings to the development of Ballarat as a city, featuring permanent structures and amenities that served the community's needs.



### Speedwell Street: 1855 - 1861

Aligned with Main Street to highlight the evolution of living conditions from tents to houses including the establishment of schools, churches, and technological innovations that improved daily life.



### Industrial Precincts: 1861 - 1914

The Quartz Mining Co., Boiler House and the Wheelwrights demonstrate how the influx of gold and technological advancements fueled Ballarat's rapid development.



### Wadawurrung Cultural Precinct:

Artworks surrounding the Post Office dam by First Nations artists share their reflections of culture, history, and heritage of the Wadawurrung people, the traditional custodians of the land.

## Included Experiences:

### AURA Sound & Light Show

As students move through the museum at night, they encounter stunning projections that create an immersive storytelling experience, transporting them back in time to witness the creation and discovery of the world's most precious metal, hear the Wadawurrung creation story and the Eureka Rebellion events.

### Gold Pour

Students are guided by the Industrial Blacksmith through a demonstration that highlights the science of gold, and its historical significance to Ballarat during the gold rush period, deepening their understanding of the value of gold and the methods used for mining.

## Experiences to choose from:

### Quartz Mine Tour

Students are guided underground for a mine tour, exploring either the Labyrinth of Gold, an immersive journey revealing the working life of Ballarat's early miners, or the Secret Chamber, which tells the inspiring story of two Chinese brothers seeking their fortune in Victoria's New Gold Mountain.

### Candle Dipping

Students dive into the industrial precinct to explore the exciting technological innovations that fuelled Ballarat's rapid development during the gold rush, and then they get to dip their own candles!

## Learning at Sovereign Hill

Sovereign Hill supports teachers in delivering enriching history and broader Humanities educational experiences. Fostering interest in history, promoting diversity and inclusion and building historical knowledge, deepens our appreciation of the past and various perspectives, particularly Aboriginal people, Australia, Asia, and the Western world.

- 1. Choose an Education Program:** Participate in interactive sessions led by knowledgeable Education Officers.
- 2. Orientation Experience:** Designed to welcome you to the museum and introduce you to our shared history, activations, exhibits, and activities.
- 3. Teacher's Museum Guide:** Explore the museum at your own pace to foster independent inquiry and discovery.

### Choose One - 50 minute Level 3-4 programs:

#### Living in the Past

Students use primary sources to explore aspects of daily life of people living through Victoria's 19th century gold rushes

#### Victorian Curriculum Links

- History
- Personal & Social Capability
- Ethical Capability
- Intercultural Capability

#### Gold Rush Immigration

Students become history detectives using primary and secondary sources to investigate the stories of male and female gold rush migrants.

#### Victorian Curriculum Links

- History
- Civics & Citizenship
- Personal & Social Capability
- Critical & Creative Thinking

#### Aboriginal People and the Goldfields +\*

Students explore the experiences, perspectives and responses to 19th century European colonisation on Ballarat's Aboriginal people.

#### Victorian Curriculum Links

- History
- Geography
- Personal & Social Capability
- Ethical & Intercultural Capability

#### Chinese People on the Goldfields + \*

Students experience daily life of Chinese migrants on the Victorian goldfields, examining the significance of events and symbols that highlight diversity and identity in the colony.

#### Victorian Curriculum Links

- History
- Ethical & Intercultural Capability
- Personal & Social Capability
- Critical & Creative Thinking

#### Collection CloseUp: Picturing the Past

Students examine change over time and the role of photographs in remembering the past by exploring historic cameras and photographs from the Ballarat community.

#### Victorian Curriculum Links

- History
- Critical & Creative Thinking
- Intercultural Capability

#### Goldfields STEM

Students explore simple machines and technologies of the past to understand, design and innovate using the SCAMPER method to generate ideas.

#### Victorian Curriculum Links

- History
- Technology
- Personal & Social Capability
- Critical & Creative Thinking

#### Welcome to the Goldfields \*

Students are guided on a walking tour of the museum, to understand the narrative of the Ballarat goldfields and its people, to enrich their knowledge of Australia's colonial past, from 1851 to the late 19th Century.

#### Victorian Curriculum Links

- History
- Technology
- Personal & Social Capability
- Intercultural Capability

+ Cross Curriculum Learning Priorities

\* Program includes a walking tour or outdoor experience.

**Museums are vibrant spaces where learners create meaningful connections to their lives. Experiences within a museum foster lifelong memories through stories, play, objects and context.**



Museums offer tangible and intangible histories to guide our inquiries.

**TANGIBLE HISTORY:** Can be touched, is real and existed.

**INTANGIBLE HISTORY:** Cannot be touched, exists through connection to something else.

#### Historical Concepts and Skills

- Historical questions
- Chronology
- Using historical sources
- Continuity and Change
- Causes and consequences
- Historical significance
- Communicating

**Whose history is it? How do we know if we weren't there? Does the past make us who we are today?**

**Standard Catering Package** On-site catering by Peter Rowland (PRG) wholesome food that supports Australian producers. Menus focus on familiar flavours for children, prioritising allergen safety and optimal nutrition. Upgrades to the Standard Package are available.

### Buffet Breakfast - Day 2

Selection of four choices of cereal, wholemeal toast, milk or alternative milks, orange or apple juice, variety of jams or vegemite, whole seasonal fruit, portioned two fruits and individual yoghurt pots.

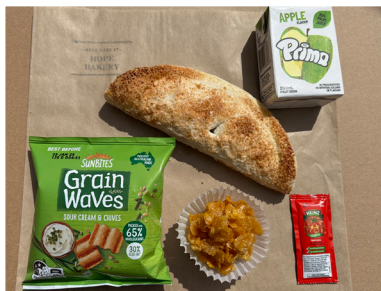
**Adults:** Tea and espresso coffee, granola, natural Greek yoghurt and seasonal fruit.



### Lunch - Day 2

#### Hope Bakery:

Choice of Meat Pie, Sausage Roll or Vegetable Pastie with Grain Waves, sweet treat, and juice box.



#### Meat & Salad Bread Roll:

Mix of Wholemeal Bread rolls with: Sliced leg ham, cheese, and tomato, Shredded Chicken Caesar, Bacon with mixed leaf or Rainbow salad roll with Red Rock chips, sweet treat, and juice box.



### Two Course Dinner - Day 1

All dinners served with a wholemeal bread roll and water.

**Adults:** Tea and espresso coffee and entree included.

#### Dinner Example - Tuesday

##### Main:

Chicken Parma (no ham) with tomato napoli sauce and grated cheese melted served with roasted pumpkin, roasted potatoes, and steamed green beans.

##### Dessert:

Variety of frozen yoghurts.

##### Adult Entrée:

Greek salad with feta and dressing



### Snacks - Day 1 or 2

**Choose 2** - Snacks are interchangeable across morning tea, afternoon tea or supper.

#### Snack Examples

- Popcorn & flavoured milk
- OR
- Cheese snack & flavoured milk
- OR
- Hope Bakery cookie & hot Milo
- OR
- Homemade fruit buns & seasonal fruit
- OR
- Variety of slices & seasonal fruit
- OR
- Individual pretzel bag & seasonal fruit



This menu is a guide and is subject to change based on the availability of produce. Dinner meals are allocated by days of the week.

**Camp Program.** Your dedicated School Bookings Officer will tailor your camp program to maximise your 2-day stay.

#### Example:

DAY 1	DAY 2
<ul style="list-style-type: none"> <li>• Arrival</li> <li>• Diggings, Chinese Village Precinct – SG</li> <li>• Lunch</li> <li>• Main Street Precinct – SG</li> <li>• Education Program – F</li> <li>• Museum Demonstration &amp; Dipping – F</li> <li>• Hotel Check in</li> <li>• Dinner – F</li> <li>• AURA – F</li> </ul>	<ul style="list-style-type: none"> <li>• Breakfast – F</li> <li>• Hotel Check out</li> <li>• Steam &amp; Mining Precinct – SG</li> <li>• Gold Pour Demonstration – F</li> <li>• Lunch</li> <li>• Mine Tour – F</li> <li>• Wadawurrung Cultural Precinct – SG</li> <li>• Depart</li> </ul>

Facilitated - F | Self-Guided - SG

Mealtimes (Times may change): Breakfast 7.30am, Lunch 12.30pm, Dinner 5.30pm