



Dear Students and Families,

This year, we are so excited to welcome you all to an amazing year of learning and fun in Year 5!

Together we are committed to:

- embracing and valuing each student's knowledge, experiences and personal uniqueness
- aspiring to deliver diverse and personalised learning experiences
- reflecting and evaluating our professional practice to ensure all students feel valued, safe and supported

Please find information below that will help you feel connected and up to date in 2024.

**Aaron Dean/ Michelle Marsh**

Pilgrim  
Homegroup Teacher

*The Lane Learning Community*



[aaron.dean@smcmeppingnth.catholic.edu.au](mailto:aaron.dean@smcmeppingnth.catholic.edu.au)

[michelle.marsh@smcmeppingnth.catholic.edu.au](mailto:michelle.marsh@smcmeppingnth.catholic.edu.au)

**David Lewis**

Samaritans  
Homegroup Teacher

*The Lane Learning Community*



[david.lewis@smcmeppingnth.catholic.edu.au](mailto:david.lewis@smcmeppingnth.catholic.edu.au)

**Emily Hodgson**

Disciples  
Homegroup Teacher

*The Lane Learning Community*



[emily.hodgson@smcmeppingnth.catholic.edu.au](mailto:emily.hodgson@smcmeppingnth.catholic.edu.au)

**Year 5 - Learning Support Officers**

**Tonina Sirianni**

**Bernadetter Lancaster**

## AN A-Z OF WHAT YOU NEED TO KNOW THIS YEAR

### Attendance

Regular attendance at school is very important for the development of learning, consistency of routines and maintaining relationships. However, any student who is unwell is required to stay home and return when they are well. Please keep your child at home if they are displaying symptoms such as a runny nose, sore throat or fever.

### Absences

In the case of students being absent from school, written notification is required on the day of absence. Written communication can include an email, handwritten note or by filling out the absence e-form on the app. *The Audiri app is the most convenient way to do this.* Please advise the school in writing of any extended periods of absence in advance.

### Late Arrival or Early Leave

All students must be signed in and out at reception when arriving late or leaving early. If your child is required to be picked up early during the school day please be advised that it is best to collect them before or after break times.

### Starting Time: 8.45am

- *First Break:* 10:55am - 11:35am
- *Second Break:* 1:45pm - 2:25pm

### Dismissal Time: 3:25pm

### Chromebooks

At SMCM we have a 1:1 Chromebook program for students in Years 3 to 6.

- Chromebooks are a tool to help support effective Learning and Teaching.
- *Each student will have a Google Education account to login into their Chromebook*
- Students will have access to Google Drive with Docs, Sheets, Slides as well as Gmail, Calendar, and school-approved Apps and Extensions that can be accessed on any device anywhere, anytime.
- *Student use and access are managed and monitored through firewalls, the Google Apps Administration Console and Hapara to ensure student safety and security*
- SMCM is an eSmart school and we promote the safe, smart and responsible use of technology.
- *Throughout the year, students will continue to develop their understanding of cybersafety, responsibility for equipment and ability to follow Chromebook guidelines for use as articulated in the Digital Technologies User Agreement.*
- **To assist them in using their Chromebook as a learning tool, all students are required to bring a pair of headphones to use at school. Please ensure that they are clearly labelled with their name.**



### Communication

#### Meeting with teachers

Please email teachers to make an appointment before or after school to ensure we can give you our full attention and time.

- **Teacher emails** - see above. Please allow time for teachers to respond as we endeavour to read and respond to emails as soon as possible
- **Newsletter** - available fortnightly on Thursdays on the app and website
- **Instagram**- Follow us at @smcmeppingnth
- **Audiri App** - download the Audiri app from the App Store or Google Play store to receive important updates and notifications
- **Seesaw Family** - check Seesaw Family for announcements, reminders and information regarding your child's homegroup

### Extra Curricular Activities

- **Camp Don Bosco Overnight Camp: Term 4, Tuesday 28th - Wednesday 29th October:** More information will be provided later in the year.
- **District Sports:** Some opportunities will be available for students to participate in external sports competitions throughout the year. Trials and selections will be held based on age groups.
- **Incursions and Excursions:** Incursions and excursions will be provided to enhance learning in different curriculum areas. The cost of these activities has been covered by the Excursion Levy in the School Fees.

### Home Learning

Home learning activities connect to the learning that is happening at school and are distributed each week into students' home learning books and sometimes through Seesaw. Home Learning will be distributed on Monday and will be collected on the following Monday. Students will be given a home learning book in which to complete their learning.

Students are expected to:

- Read for at least 20 minutes daily
- Work on assigned Matific activities
- Complete Spelling activities
- Inquiry or RE activity - as required

### Library

Students are encouraged to regularly borrow from the library. They are encouraged to borrow **at least two books**, one for home and one for school. Library days are as follows:

**Samaritans:** Tuesday

**Disciples:** Tuesday

**Pilgrims:** Monday

### Mobile Phones

We understand many of our students bring mobile phones to school, particularly those who walk and ride to school. Mobile phones will need to be handed in to teachers at the beginning of each day where they will be locked in a drawer to keep them safe. Should you need to contact your child during the day, please use the school phone numbers or homegroup teacher's email. Once on school grounds, students should place their phones in their school bag until handed to their teacher. At pick up time phones should remain in school bags until students leave the school grounds. Phones are for the purpose of parent communication before and after school. Students should not use other phone features eg. camera or access social media at school. Please discuss these expectations with your child.

### Online Learning Logs

To communicate our reporting of learning & teaching, each student has an individual Online Learning Log (OLLs). The OLLs provide families and students with regular work samples and teacher feedback.



This year we will continue to use Seesaw Family as the platform for our OLLs. To access your child's Online Learning Log you will need to download the Seesaw: Family App available from the App store or the Google Play store. If you need support connecting to your child's OLL on Seesaw, please contact their homegroup teacher.

## Resources for Learning

Please ensure that your child has the following items at school and are clearly labelled with their full name:

- Headphones
- School Hat

Could you also please send along **a box of tissues** with your child to school.

## Social and Emotional Learning

### Being responsible for my behaviour:

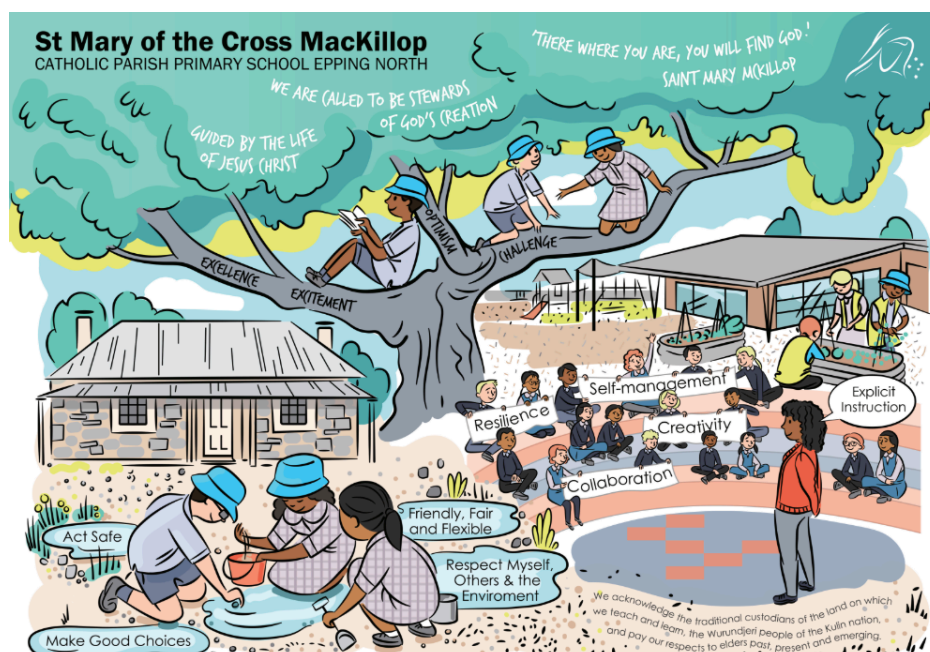
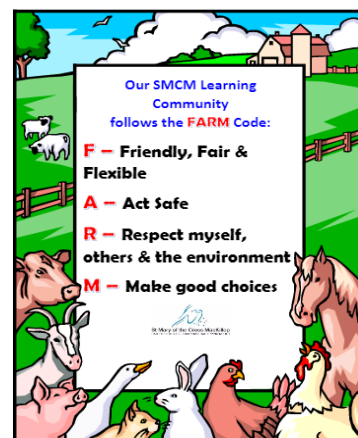
- Our whole school follows a restorative approach to help us build a positive learning community.
- We refer to our [Behaviour Matrix](#) to help support our understanding of the FARM code.
- Through Respectful Relationships we practise and teach positive mental health strategies and help our students become happier and more resilient.



### Confident Learner Dispositions

- Traits, habits and skills that need to be developed for success in learning now and in the future
- At SMCM our learner dispositions are; **creativity**, **self-management**, **resilience** and **collaboration**
- These dispositions help us to learn. We can use them everywhere and anywhere, not just at school. They are skills for life!

The dispositions are explicitly taught across all curriculum areas and should be reinforced at home.



## Term One Weekly Timetable

Each term we will send out our weekly timetable to reflect important information about specialist days, uniform and other events. Please find below the timetable for each class:

### PILGRIMS HOMEGROUP

Monday Lunch Mums orders	Tuesday	Wednesday Lunch Mums orders	Thursday	Friday Lunch Mums orders
Full Summer Uniform	Full Summer Uniform	Full Summer Uniform	Sport Uniform	Sport Uniform
Library and Japanese		Visual Arts and STEM	PE	Homegroup PE and Afternoon Gathering

### DISCIPLES HOMEGROUP

Monday Lunch Mums orders	Tuesday	Wednesday Lunch Mums orders	Thursday	Friday Lunch Mums orders
Full Summer Uniform	Full Summer Uniform	Sport Uniform	Full Summer Uniform	Sport Uniform
Visual Arts	Library	Japanese and STEM	PE	Homegroup PE and Afternoon Gathering

### SAMARITANS HOMEGROUP

Monday Lunch Mums orders	Tuesday	Wednesday Lunch Mums orders	Thursday	Friday Lunch Mums orders
Full Summer Uniform	Full Summer Uniform	Full Summer Uniform	Sport Uniform	Sport Uniform
STEM	Library	Japanese and Visual Arts	PE	Homegroup PE and Afternoon Gathering