

Student Name: _____

Grade: _____ Date: _____



1. The Mother's Day stall at Freda's school raised \$1,345 in 2018. They are hoping to raise 20% more at this year's 2019 stall. What is their target amount for 2019?



2. Mother's Day in Australia occurs on the second Sunday in May each year. ANZAC DAY is ALWAYS on 25th of April each year. What is the GREATEST number of days that there could be **between** ANZAC DAY and Mother's Day?

3. A Mother's Day sign had a rectangular shape measuring 16.2 cm tall by 23.8 cm wide. Find the perimeter of the sign, and find its area in square centimetres, correct to 2 decimal places.

4. If the Mother's Day sign in Question 3 (above) had sides exactly DOUBLE the size of those listed, can you GUESS what the perimeter and area of that larger sign might be? Do the calculations, and see if your guess is anywhere near correct.



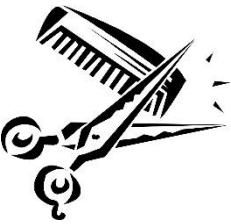
5. In the new "LEGO CHALLENGE" TV program, it was meant to run for 1½ hours. But it ran for 20% longer than that. For how many minutes did that program run altogether?

LEGO MASTERS

6. In a recent survey, out of the top 10 most popular children's books, 4 had animals as the chief characters. What percentage is that?



7. Because of money problems, many people are not getting their hair cut as often as previously. Some are getting their hair cut each 5 weeks instead of each 3 weeks as they used to do. How many fewer haircuts would that be in a full year? And, if each cut cost \$32, how much was saved in one year by taking this approach?



8. John and Judy were playing Snakes and Ladders. In how many ways could those 2 six-sided dice land, and add up to a number greater than 9?



9. The TV program "MASTERCHEF" commenced last week. There are 24 contestants in the 2019 series. And there are 3 comperes (chefs). What fraction of all the on-screen participants, then, are contestants? Express your answer in simplest terms.



10. **Open-Ended Question:** Three-eighths of a mystery number gives an odd number. What might that mystery number be? Give 3 possible answers.