

LatrobeCity

# Youth Infrastructure Plan

2024 – 2034



*Latrobe City Council acknowledges that it operates on the traditional land of the Brayakaulung people of the Gunaikurnai nation and pays respect to their Elders past and present.*



## Our Community Vision

In 2031 Latrobe City will be known for being **smart, creative, healthy, sustainable and connected**. It will be the most liveable regional city and at the forefront of innovation.

Working together we are a diverse, connected and resilient community, supporting the equitable diversification of our economic base and transition towards a low emissions future.

We are known as a community that is equitable, liveable and sustainable, with a continued focus on healthy lifestyles supported by high quality recreational and cultural facilities and a natural environment that is nurtured and respected.

---

---

### Table of Contents

---

Introduction	01
Methodology	03
Current Facilities	05
Short Term Actions	09
Long Term Actions	09
Implementation Plan	10
Maps	13

---



Moe Skate Park

## Introduction

The objective of the Latrobe City Council Youth Infrastructure Plan is to provide a wide range of outdoor recreational spaces for young people that allow for informal physical activity and social connection. These spaces will be accessible, safe, and inclusive to support the wellbeing of youth in Latrobe City.

## Purpose

The Youth Infrastructure Plan will assist Council to:

1. Improve existing facilities;
2. Identify needs and gaps in recreational opportunities for young people;
3. Make informed decisions around planning and delivery of youth infrastructure;
4. Seek appropriate funding opportunities for identified projects;
5. Promote facilities to the local and broader community to encourage participation and provide potential tourism benefits to small and large towns.

## Strategic Alignment

- Council Plan 2021-2025
- Asset Plan 2022-2032
- Living Well Latrobe, Our Community’s Municipal Public Health and Wellbeing Plan 2022-25
- Public Open Space Strategy
- Play Space Strategy
- Skate and BMX Plan



## Community Feedback

During development of Living Well Latrobe 2022-25 the Kids Co-designing Healthy Places toolkit developed by Monash University was used to identify priorities with and for children and young people. ‘Access – having access and the ability to join in’ was the third priority identified during this process.

During broader community engagement for Living Well Latrobe 2022-23, when asked ‘What would make Latrobe a better place to live, work and visit?’ People said:

- “We need more investment in parks and natural play spaces, outdoor gyms, pump traks, stake parks”
- “Encourage people to walk and ride around the towns where possible to help encourage a healthy lifestyle...”
- “...I want to see kids...engaged in something”
- “Building and maintaining community areas...”
- “Upgrade sporting facilities in smaller towns to encourage kids to stay involved in the town as well as upgrade park and recreational facilities”
- “...Diverse sporting activity”
- “...better quality open spaces, this relates to CBD’s, parks, nature strip planting, median strips, fencing, pavements, public toilets, playgrounds, skateparks...”

As required under the Gender Equality Act 2020, a Gender Impact Assessment has been completed on the Youth Infrastructure Plan to ensure equal opportunities for people of all genders.

# Methodology

To ensure this plan is financially viable and sustainable, small neighbouring towns have been grouped. The plan seeks to provide infrastructure equitably across these town groups.

The plan also acknowledges the significance of existing infrastructure such as Recreation Reserves, and seeks to build on these facilities to ensure they are broadly accessible and provide for the whole community.




Considerations in the development of the implementation plan has been given to:

- Current facilities
- Economic feasibility
- Financial sustainability
- Travel time and distance
- Potential tourism benefits
- Community involvement in facility development and management

## Active Recreation Activities to be available across town groups

- Tennis
- Skate / Scoot
- BMX
- Cycling
- Mt Biking
- Basketball
- Cricket
- AU Football
- Netball
- Soccer
- Baseball
- Walk/ Run

## Small Town Groups and Travel Distance

SMALL TOWN GROUPS	KILOMETRES			
<i>Yinnar and Boolarra</i>	9.2km	7min	29min	16min
<i>Glengarry and Toongabbie</i>	9.6km	7min	27min	25min
<i>Tyers and Glengarry</i>	8.5km	6min	23min	-
<i>Tyers and Yallourn North</i>	11km	11min	37min	12min
<i>Yallourn North and Newborough</i>	7.7km	7min	27min	13min
<i>Traralgon South and Callignee</i>	6.5km	7min	34min	-

## Population (2021 census)

TOWN	TOTAL POP.	10-14yrs	15-19yrs	20-24yrs	TOTAL 10-24yrs
Traralgon	26,907	1,680	1,545	1,489	4,714
Morwell	14,389	841	764	870	2,475
Moe	9,375	519	445	477	1,441
Newborough	6,886	369	380	405	1,154
Churchill	4,924	322	277	361	960
Yallourn North	1,511	86	75	96	257
Glengarry	1,113	98	76	52	226
Toongabbie	1,085	82	54	61	197
Boolarra	1,023	70	57	35	162
Yinnar	1,021	59	52	53	164
Tyers	893	66	56	43	165
Traralgon South	553	35	56	36	127
Callignee	391	32	23	16	71

Actions and priorities are based on an assessment and review completed by Gippsport in March and July 2023; the above data; and internal and external consultation.

Consideration has also been given to:

- CPTED Principles
- Accessibility
- Healthy By Design Principles



# Current Facilities

## Small Towns

	<b>BOOLARRA</b>	<b>YINNAR</b>	<b>GLENGARRY</b>	<b>TOONGABBIE</b>
<i>Tennis</i>	4 outdoor courts located at Boolarra Recreation Reserve	4 outdoor courts located at Yinnar Recreation Reserve	4 outdoor courts located at Glengarry Recreation Reserve	2 outdoor courts located at Toongabbie Recreation Reserve
<i>Skate / Scoot</i>	Concrete facility at Boolarra Centennial Park	Concrete facility at Main Street Skate Park	Metal ramps and rails on a concrete base at Main Street Reserve	Metal ramps and rails on asphalt base at Toongabbie Recreation Reserve
<i>BMX</i>	Dirt BMX track at Boolarra Centennial Park	-	Dirt BMX track at Main Street Reserve	-
<i>Cycling</i>	Rail Trail	Decent path / open road network in and around town	Rail Trail	Rail Trail
<i>Mt Biking</i>	-	-	Rail Trail / BMX track	Rail Trail
<i>Basketball</i>	1/4 court at Boolarra Centennial Park	-	Half-court at Apex Park	-
<i>Cricket (nets)</i>	Located at Boolarra Recreation Reserve	Located at Yinnar Recreation Reserve	Located at Glengarry Recreation Reserve	Located at Toongabbie Recreation Reserve
<i>AU Football</i>	Boolarra Recreation Reserve has a football oval with seasonal goals access	Yinnar Recreation Reserve has a football oval with seasonal goals access	Glengarry Recreation Reserve has a football oval with seasonal goals access	Toongabbie Recreation Reserve has a football oval with seasonal goals access
<i>Netball</i>	Boolarra Recreation Reserve has netball courts with rings	Yinnar Recreation Reserve has netball courts with rings	Glengarry Recreation Reserve has netball courts with rings	-
<i>Soccer</i>	Green open spaces available, but no access to goals	Green open spaces available, but no access to goals	Green open spaces available, but no access to goals	Green open spaces available, no goals access
<i>Baseball</i>	Green open spaces available	Green open spaces available	Green open spaces available	Green open spaces available
<i>Walk / Run</i>	Rail Trail	Yinnar Recreation Reserve	Rail Trail / Glengarry Recreation Reserve	Toongabbie Recreation Reserve
<i>Table Tennis</i>	Railway Park	Yinnar Recreation Reserve	Town Centre	Toongabbie Recreation Reserve



Boolarra BMX Track



Boolarra Skate Park



Glengarry BMX Track



Glengarry Skate Park





Outdoor Table Tennis



Toongabbie Skate Park



Yallourn North BMX Track



Yallourn North Skate Park

**TYERS**

2 outdoor courts located at Baillie Reserve

-

Dirt BMX track located at Baillie Reserve

Decent path / open road network in and around town

-

Half-court at the CFA shed, next to the BMX track at Baillie Reserve

-

Baillie Reserve has a football oval with seasonal goals access

Baillie Reserve has netball courts with rings

Baillie Reserve has a soccer pitch with seasonal access to goals

Green open spaces available

Baillie Reserve

-

**YALLOURN NORTH**

2 outdoor courts located at Yallourn North Recreation Reserve

Metal ramps with newer concrete corner located at Reserve St / Third St Reserve

Dirt BMX Track located at Reserve St / Third St Reserve

Decent path / open road network in and around town

Within close proximity to Haunted Hills Mountain Bike Park

Rotating hoop/backboard located at one end of secondary netball court at George Bates Reserve

Yallourn North Recreation Reserve

George Bates Reserve and Yallourn North Recreation Reserve have football ovals with seasonal goal access

George Bates Reserve has netball courts with rings

Green open spaces available, but no access to goals

Green open spaces available

Yallourn North Recreation Reserve

-

**NEWBOROUGH**

3 outdoor courts located at Monash Reserve

-

Dirt BMX Track located at Henry White Reserve

Joe Carmody Athletics Track (velodrome)

Within close proximity to Haunted Hills Mountain Bike Park

-

WH Burrage Reserve

Northern Reserve has a football oval with seasonal goals access

Monash Reserve and Northern Reserve have netball courts with rings

Soccer pitches located at WH Burrage Reserve and Monash Reserve with seasonal goals access

Permanent fencing and seasonal diamond located at WH Burrage Reserve

Joe Carmody Athletics Track

-

**TRARALGON SOUTH**

4 outdoor courts located at Traralgon South Recreation Reserve

Concrete bowl with metal coping located at Traralgon South Recreation Reserve

-

Decent path / open road network in and around town

-

-

Traralgon South Recreation Reserve

Traralgon South Recreation Reserve has an oval (but no goals)

Traralgon South Recreation Reserve has netball courts with rings

Green open spaces available, but no access to goals

Green open spaces available

Traralgon South Recreation Reserve

-

**CALLIGNEE**

-

-

-

-

-

-

No (there is a cricket pitch on the oval at Callignee Recreation Reserve but no nets)

Callignee Recreation Reserve has an oval but no goals

-

Green open spaces available, no goals access

Green open spaces available

Callignee Recreation Reserve

-



Newborough BMX Track



Tyers BMX Track



Yinnar Skate Park



Traralgon South Skate Bowl

# Current Facilities

## Large Towns

	TRARALGON	MORWELL	MOE	CHURCHILL
<i>Tennis</i>	Traralgon Tennis Centre (bookings required) Maskrey Reserve, Pax Hill (bookings required) Eric Taylor Reserve (open to public)	Ronald Reserve (bookings required)	Moe Botanic Gardens	Gaskin Park (bookings required)
<i>Skate / Scoot</i>	Traralgon Skate Park (concrete)	Morwell Skate Park (concrete)	Moe Skate Park (concrete) Haunted Hills Pump Track	Churchill Skate Park (concrete)
<i>BMX</i>	Pump Track at Traralgon Recreation Reserve	Ronald Reserve (dirt track)	Haunted Hills Pump Track	Glendonald Park (dirt track)
<i>Cycling</i>	Gippsland Plains Rail Trail – Traralgon to Toongabbie Traralgon-Morwell Shared Path	Traralgon-Morwell Shared Path Waterhole Creek	Joe Carmody Athletics Track (veledrome) Moe-Yallourn Rail Tail Old Sale Road (bike lane)	Eel Hole Creek
<i>Mt Biking</i>	Maryvale Pines <i>*Located on private land</i>	Maryvale Pines <i>*Located on private land</i>	Haunted Hills Mountain Bike Park (Newborough)	Dobbins Road (unsanctioned / difficult)
<i>Basketball</i>	½ court at Catterick Crescent Reserve ½ court at St James Church (Grey St) ½ court Marshalls Road (Hammersmith Cct)	½ court at Northern Reserve	-	Glendonald Park
<i>Cricket (nets)</i>	Duncan Cameron Traralgon West Sporting Complex Apex Park Catterick Crescent Reserve (1 open to public) Traralgon Rec Reserve	Maryvale Recreation Reserve (1 open to public) Keegan Street Reserve (1 open to public)	Ted Summerton Reserve Gippsland Cricket Centre of Excellence (bookings required) WH Burrage Reserve (Newborough)	Andrews Park West Glendonald Park
<i>AU Football</i>	Traralgon West Sports Complex Apex Park Traralgon Recreation Reserve Duncan Cameron Reserve Liddiard Road Primary School Oval Bradman Boulevard Oval	Ronald Reserve Crinigan Road South Reserve Northern Reserve Morwell Recreation Reserve	Ted Summerton Reserve Joe Tabautu Reserve Northern Reserve (Newborough)	Gaskin Park Glendonald Park
<i>Netball</i>	Breed Street Traralgon Recreation Reserve	Ronald Reserve Morwell Recreation Reserve Morwell Park Primary School	Ted Summerton (goals taken down) Monash Reserve (Newborough) Northern Reserve (Newborough) Saviges Road	Gaskin Park Glendonald Park

## Large Towns (cont.)

	TRARALGON	MORWELL	MOE	CHURCHILL
Soccer	Harold Preston Bradman Boulevard Oval	Ronald Reserve Morwell Recreation Reserve Crinigan Road South Reserve Crinigan Road North Reserve (GSEP) Maryvale Recreation Reserve Morwell Park Primary School	Olympic Park WH Burrage Reserve (Newborough) Monash Reserve (Newborough)	Hazelwood South Reserve
Baseball	Kevin Lythgo Reserve Liddiard Road Primary School Oval	Toners Lane	WH Burrage Reserve (Newborough)	Andrews Park West
Walk / Run	Gippsland Plains Rail Trail Traralgon-Morwell Shared Path Traralgon Creek Path Harold Preston Reserve Railway Reserve	Traralgon-Morwell Shared Path Crinigan Road Bushland Reserve Immigration Park / Waterhole Creek	Joe Carmody Synthetic Athletics Track Edward Hunter Bushland Reserve Moe-Yallourn Rail Trail Lake Narracan	Mathison Park / Lake Hyland Eel Hole Creek
Other	Outdoor table tennis – Newman Park	Outdoor table tennis – Morwell Town Common	Track and field infrastructure at John Field Reserve Outdoor table tennis – Moe Botanic Gardens	Synthetic Hockey Pitch – Latrobe City Synthetic Sports Field Outdoor table tennis – Mathison Park



Churchill Skate Park



Churchill BMX Track



Traralgon Pump Track



Traralgon Skate Park



Moe Skate Park



Morwell Skate Park



Morwell BMX Track



Haunted Hills Mountain Bike Park

## Short Term Actions

ACTION	LOCATION
<i>Provide free Wi-Fi and mobile phone charging station</i>	Boolarra BMX Track Churchill Skate Park Glengarry Skate Park Moe Skate Park Morwell Skate Park Newborough BMX Track Traralgon Recreation Reserve (near Pump Track) Traralgon Skate Park (new) Traralgon South Skate Park Tyers BMX Track Yallourn North Skate Park Yinnar Skate Park
<i>Confirm availability / open to general public</i>	Boolarra tennis courts Gaskin Park netball courts Gaskin Park tennis courts Glengarry netball courts Monash Reserve tennis courts Pax Hill tennis courts Ted Summerton netball courts Toongabbie netball courts Toongabbie tennis courts Traralgon South tennis courts Tyers netball courts Yinnar netball courts Yinnar tennis courts
<i>Provide soccer nets  (portable or permanent TBC per site)</i>	Boolarra Recreation Reserve Callignee Recreation Reserve Glengarry Recreation Reserve Harold Preston (make available all year round) Toongabbie Recreation Reserve Traralgon South Recreation Reserve Tyers Recreation Reserve Yallourn North Recreation Reserve Yinnar Recreation Reserve
<i>Provide AFL goal posts</i>	Callignee Recreation Reserve Toongabbie Recreation Reserve Traralgon South Recreation Reserve
<i>Review and update existing signage</i>	All sites

## Long Term Actions

ACTION	LOCATION
<i>Upgrade or install half-court basketball court and / or swivel ring</i>	Moe Morwell (refurbish) Newborough Traralgon South Traralgon x 2
<i>Install cricket nets</i>	Boolarra Recreation Reserve
<i>Upgrade BMX Track / install new Pump Track</i>	Boolarra Churchill Glengarry Morwell Newborough Traralgon South Tyers Yallourn North (upgrade to dirt track only)
<i>Upgrade or install new Skate Park</i>	Tyers Yinnar
<i>Install shelter</i>	Churchill Skate Park Traralgon Pump Track

# Implementation Plan

## 10 Year Implementation Plan – Yearly Costings (estimated as at 2024)

### YEAR ONE

2024 / 2025	Town	Priority Reason	\$
Install mobile phone charging stations at 12 locations and ensure free Wi-Fi available	Multiple	<ul style="list-style-type: none"> <li>Council Plan - Connected</li> <li>Identified need (GippSport)</li> </ul>	\$130,000
Develop promotional campaign raising profile and visibility of Latrobe City's open access recreational spaces and encouraging their use	All	<ul style="list-style-type: none"> <li>Council Plan - Connected / Healthy</li> </ul>	No additional cost to Council This will be done in-house
Pilot 'Active After Hours' initiative	Multiple	<ul style="list-style-type: none"> <li>Accessibility and activation</li> </ul>	TBC (electricity rebate)
Install Book-A-Court technology at Tennis Courts to allow free public access (online booking system)	Newborough Churchill Toongabbie Boolarra Yinnar Traralgon South	<ul style="list-style-type: none"> <li>Identified gap (GippSport)</li> </ul>	\$3,000 (Igloohome Padlock)
Install half basketball court at Apex Park, Moe	Moe / Newborough	<ul style="list-style-type: none"> <li>Lack of current facilities</li> </ul>	\$100,000
Install shelter for Pump Track at Traralgon Recreation Reserve	Traralgon	<ul style="list-style-type: none"> <li>Identified need (GippSport)</li> </ul>	\$75,000
<b>Total year one estimated costing</b>			<b>\$308,000</b>

\*Active After-Hours initiative will see lights turned on after dusk at selected Recreation Reserves to encourage community use at night.

### YEAR TWO

2025 / 2026	Town	Priority Reason	\$
Upgrade dirt BMX track to Skate Park / Pump Track	Tyers	<ul style="list-style-type: none"> <li>Lack of current facilities in northern small towns</li> <li>Community involvement</li> </ul>	\$250,000
Install Cricket Nets	Boolarra	<ul style="list-style-type: none"> <li>Lack of current facilities</li> <li>Safety</li> </ul>	\$200,000
Resurface half basketball court at Northern Reserve	Morwell	<ul style="list-style-type: none"> <li>Current condition</li> </ul>	\$25,000
Install half basketball court at:	Traralgon	<ul style="list-style-type: none"> <li>Identified gap / community requests</li> </ul>	\$200,000 (\$100,000 each)
<ul style="list-style-type: none"> <li>Eric Taylor</li> <li>Ellavale Estate (park near Kangaroo Rise)</li> </ul>			
<b>Total year two estimated costing</b>			<b>\$675,000</b>

## 10 Year Implementation Plan – Yearly Costings (cont.)

### YEAR THREE

2026 / 2027	Town	Priority Reason	\$
Extend Skate Park to include Pump Track and construct half basketball court at same location	Traralgon South	<ul style="list-style-type: none"> <li>Community requests</li> <li>Co-location of complementary facilities to increase utilisation</li> <li>Identified gap (GippSport)</li> </ul>	\$350,000
Provide sealed path from footpath to Skate Park and add seating and shelter	Churchill	<ul style="list-style-type: none"> <li>Identified need (GippSport)</li> </ul>	\$80,000
Install Pump Track to area behind Skate Park	Churchill	<ul style="list-style-type: none"> <li>Identified need (GippSport)</li> </ul>	\$250,000
Remove BMX Track at Glendonald Park	Churchill	<ul style="list-style-type: none"> <li>Poor location</li> <li>To be replaced by pump track</li> </ul>	\$5,000
<b>Total year three estimated costing</b>			<b>\$685,000</b>

### YEAR FOUR

2027 / 2028	Town	Priority Reason	\$
Upgrade BMX Track to Pump Track	Glengarry	<ul style="list-style-type: none"> <li>Condition of current facilities</li> <li>Tourism (economic benefit)</li> <li>Identified need (GippSport)</li> </ul>	\$250,000
Upgrade BMX Track (dirt)	Yallourn North	<ul style="list-style-type: none"> <li>Condition of current facilities</li> <li>Identified need (GippSport)</li> </ul>	\$100,000
Improve access and signage of netball courts and soccer pitch next to Morwell Park Primary	Morwell	<ul style="list-style-type: none"> <li>Identified need (GippSport)</li> </ul>	\$10,000
<b>Total year four estimated costing</b>			<b>\$360,000</b>

## 10 Year Implementation Plan – Yearly Costings (cont.)

### YEAR FIVE

2028 / 2029	Town	Priority Reason	\$
Upgrade BMX Track to Pump Track	Boolarra	<ul style="list-style-type: none"> <li>Condition of current facilities</li> <li>Tourism (economic benefit)</li> <li>Identified need (Gippsport)</li> </ul>	\$250,000
Upgrade Skate Park	Yinnar	<ul style="list-style-type: none"> <li>Condition of current facilities</li> </ul>	\$150,000
Install Pump Track at Morwell Town Common	Morwell	<ul style="list-style-type: none"> <li>Lack of current / appropriate facilities</li> </ul>	\$250,000
Remove BMX Track at Ronald Reserve	Morwell	<ul style="list-style-type: none"> <li>Poor location / passive surveillance</li> <li>To be replaced by pump track</li> </ul>	\$5,000
<b>Total year five estimated costing</b>			<b>\$655,000</b>

### YEAR SIX

2029 / 2030	Town	Priority Reason	\$
Upgrade BMX Track to Pump Track and install half basketball court	Newborough	<ul style="list-style-type: none"> <li>Condition of current facilities</li> <li>Tourism (economic benefit)</li> <li>Co-location of complementary facilities to increase utilisation</li> </ul>	\$350,000
Install half basketball court at Morwell Rec Reserve	Morwell	<ul style="list-style-type: none"> <li>Co-location of complementary facilities to increase utilisation</li> </ul>	\$100,000
<b>Total year six estimated costing</b>			<b>\$450,000</b>

NOTE: Funding has not currently been allocated or secured for the delivery of this implementation plan.



NOTE: Planning is currently underway for the Traralgon Youth Activity Precinct, and Victory and Newman Park Precinct which will see significant investment and outcomes for local youth in these areas and surrounds.

# 2024 Maps

## YINNAR AND BOOLLARRA

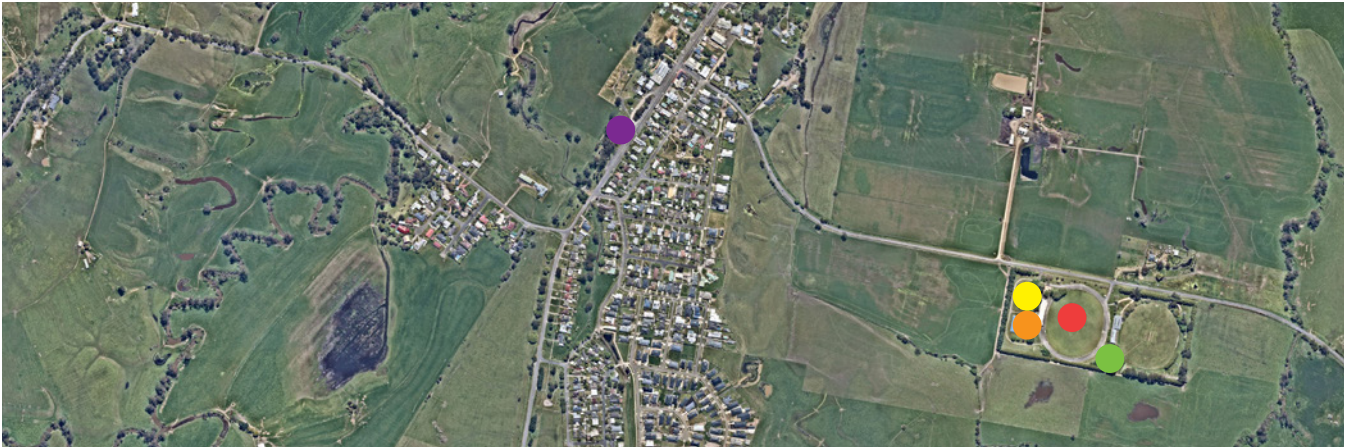


9.2km

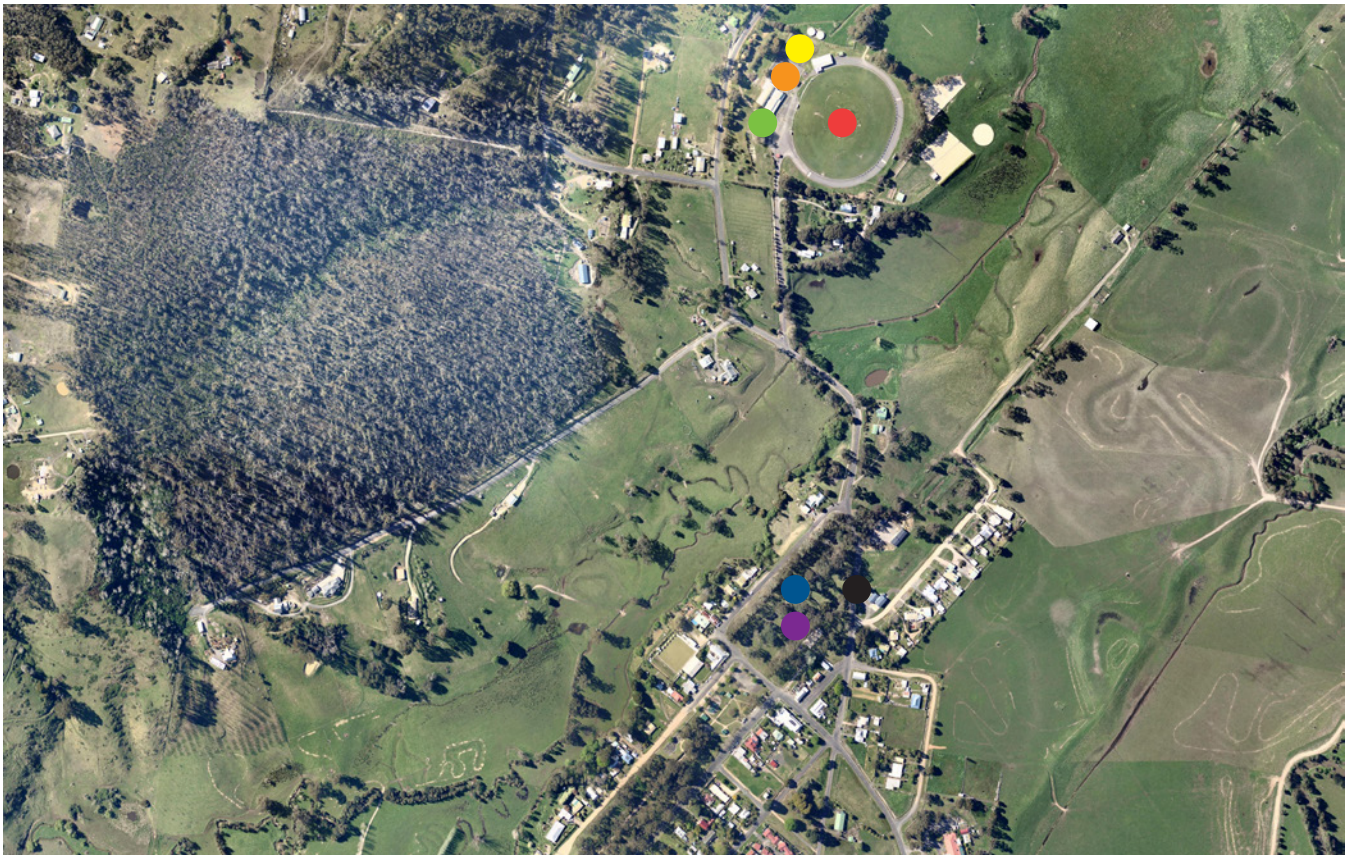
 7min    29min    16min



**YINNAR**



**BOOLARRA**



**Legend**




- Tennis
- Skate / Scoot
- BMX
- Basketball
- Cricket (nets)
- AU Football
- Netball
- Soccer

# 2024 Maps (cont.)

## GLENGARRY AND TOONGABBIE



9.6km

 7min  27min  25min

### GLENGARRY



### TOONGABBIE



#### Legend

- Tennis
- Skate / Scoot
- BMX
- Basketball
- Cricket (nets)
- AU Football
- Netball
- Soccer

# 2024 Maps (cont.)

## TYERS AND GLENGARRY



8.5km

6min 23min

### TYERS



### GLENGARRY



#### Legend

- Tennis
- Skate / Scoot
- BMX
- Basketball
- Cricket (nets)
- AU Football
- Netball
- Soccer

**TYERS AND YALLOURN NORTH**

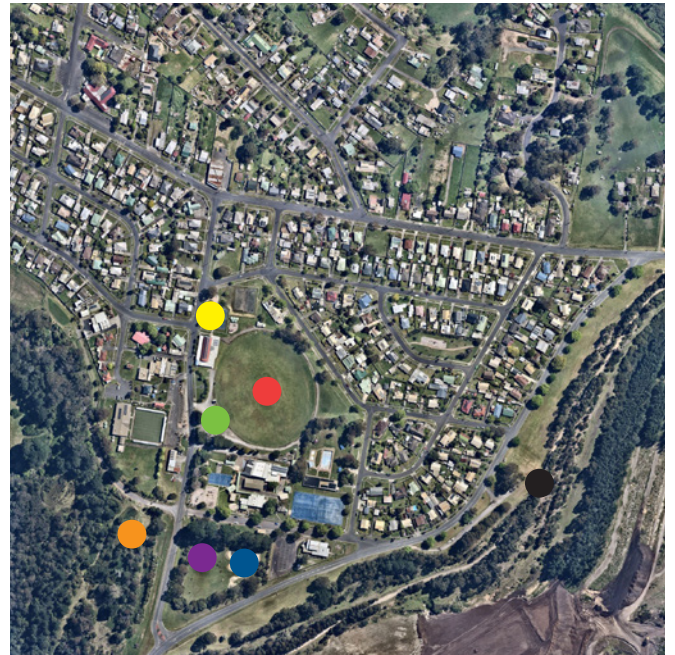


11km

11min 37min 12min

**TYERS**

**YALLOURN NORTH**



**Legend**




- Tennis
- Skate / Scoot
- BMX
- Basketball
- Cricket (nets)
- AU Football
- Netball
- Soccer

# 2024 Maps (cont.)

## NEWBOROUGH AND YALLOURN NORTH



7.7km

 7min  27min  13min

### NEWBOROUGH



### YALLOURN NORTH

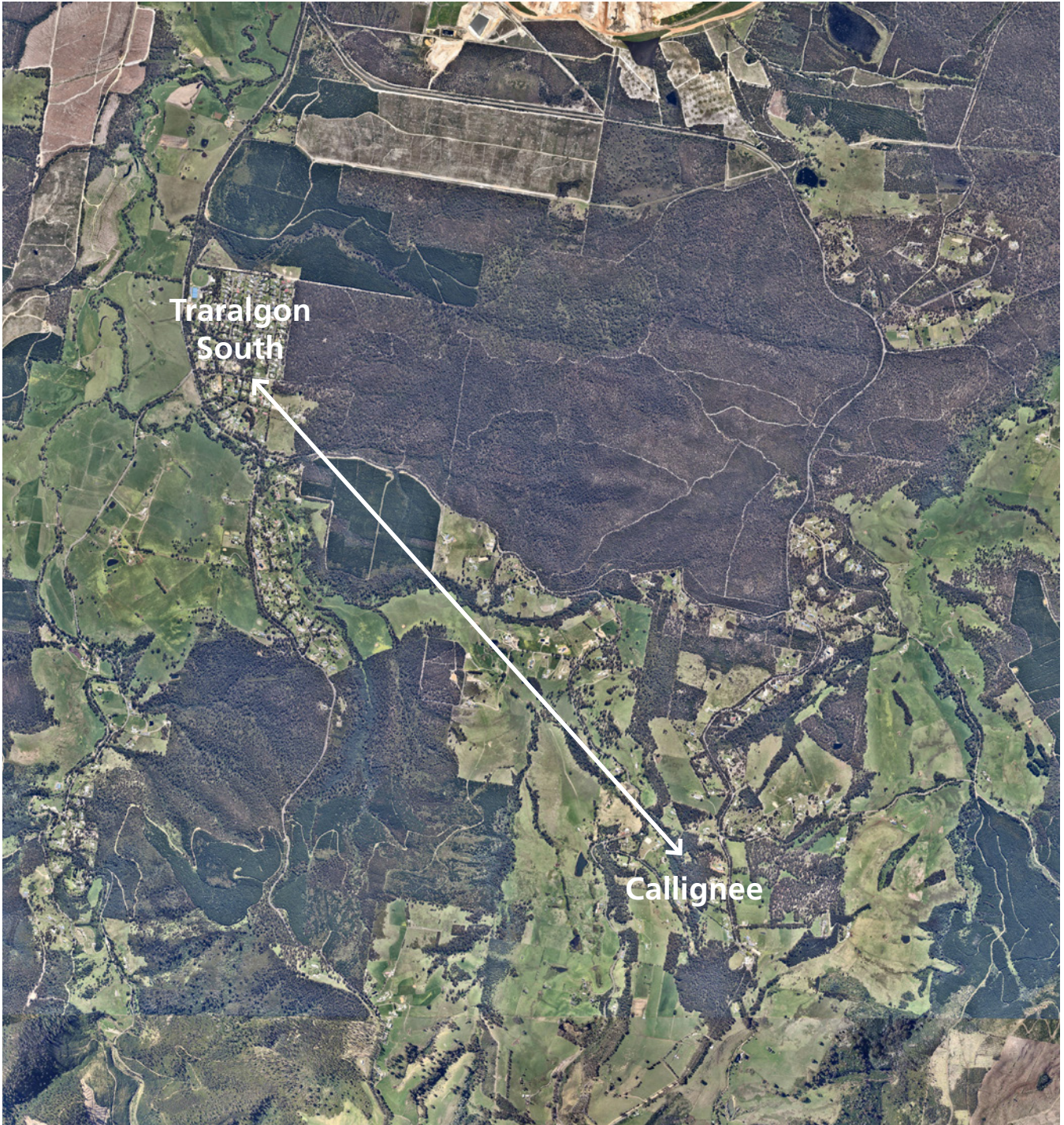


#### Legend

- Tennis
- Skate / Scoot
- BMX
- Basketball
- Cricket (nets)
- AU Football
- Netball
- Soccer

# 2024 Maps (cont.)

## TRARALGON SOUTH AND CALLIGNEE



6.5km

 7min  34min



### TRARALGON SOUTH



### CALLIGNEE

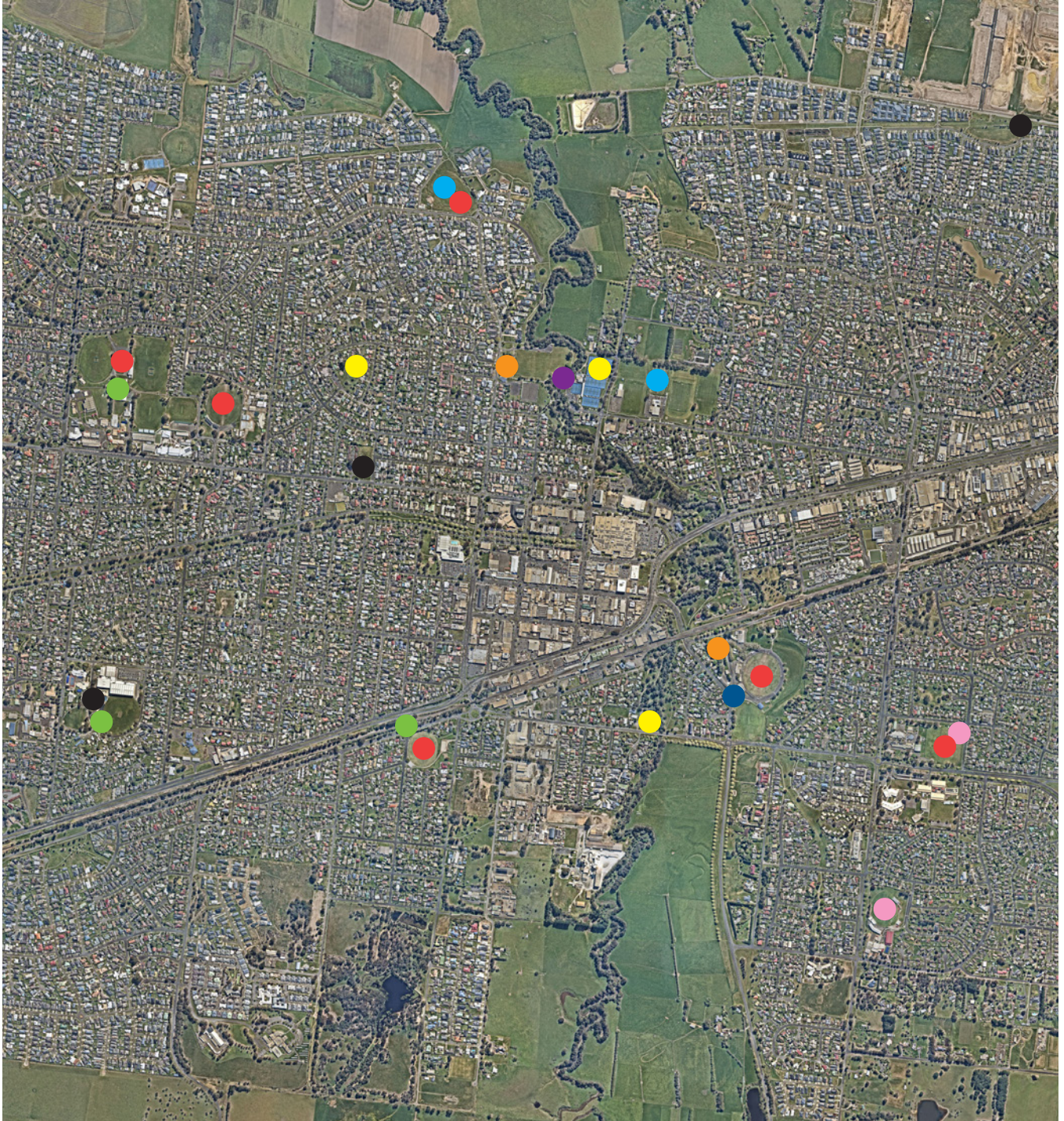


#### Legend

- Tennis
- Skate / Scoot
- BMX
- Basketball
- Cricket (nets)
- AU Football
- Netball
- Soccer

# 2024 Maps (cont.)

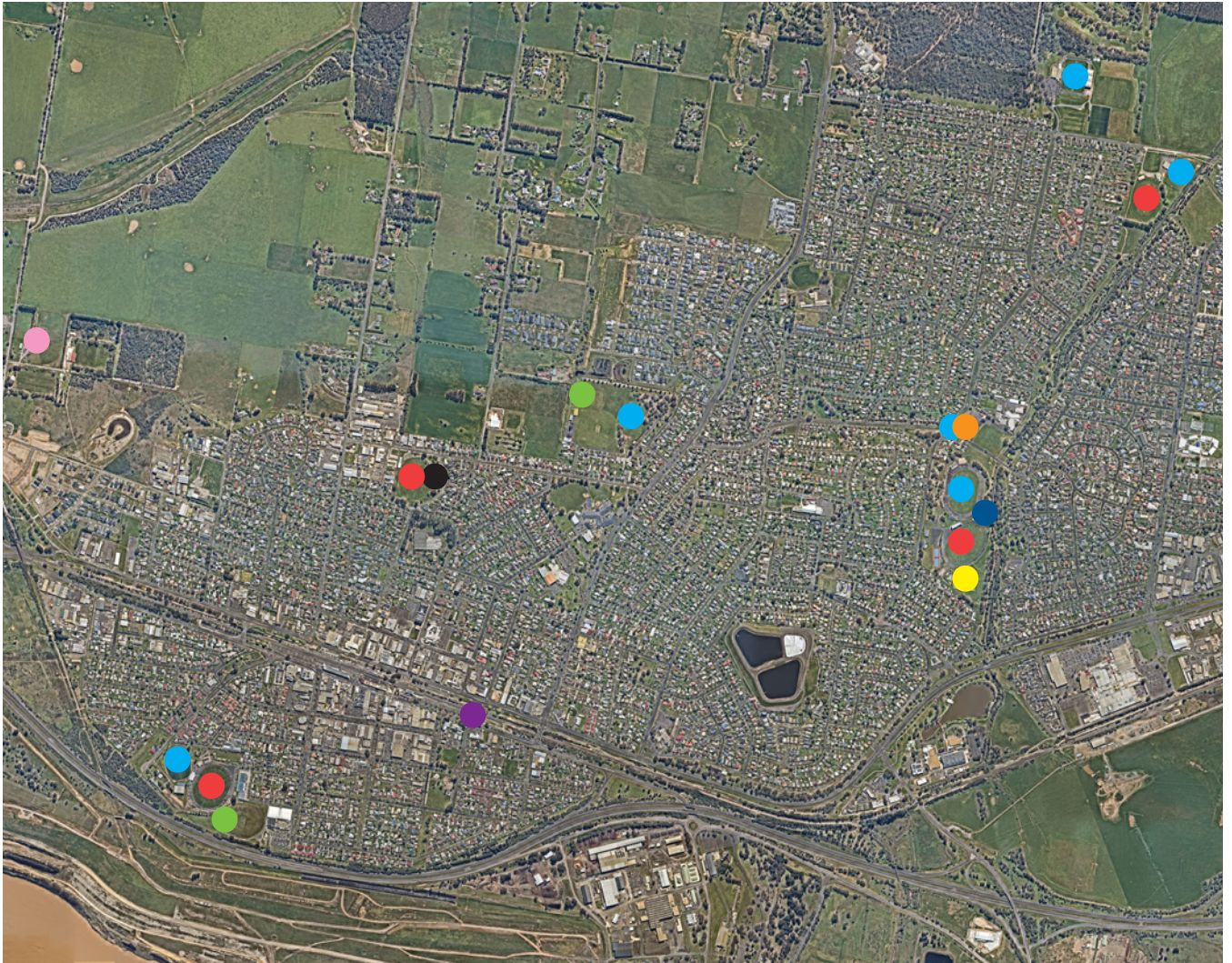
## TRARALGON



### Legend

- Tennis
- Skate / Scoot
- BMX
- Basketball
- Cricket (nets)
- AU Football
- Netball
- Soccer
- Baseball

**MORWELL**



**Legend**

- Tennis
- Skate / Scoot
- BMX
- Basketball
- Cricket (nets)
- AU Football
- Netball
- Soccer
- Baseball

# 2024 Maps (cont.)

## MOE



### Legend

- Yellow dot: Tennis
- Purple dot: Skate / Scoot
- Blue dot: BMX
- Black dot: Basketball
- Green dot: Cricket (nets)
- Red dot: AU Football
- Orange dot: Netball
- Cyan dot: Soccer
- Pink dot: Baseball

## CHURCHILL



### Legend

- Tennis
- Skate / Scoot
- BMX
- Basketball
- Cricket (nets)
- AU Football
- Netball
- Soccer
- Baseball

PROUDLY PRINTED IN  
**LatrobeCity**

*To obtain this information in languages other than English, or in other formats, please contact Latrobe City Council on 1300 367 700.*