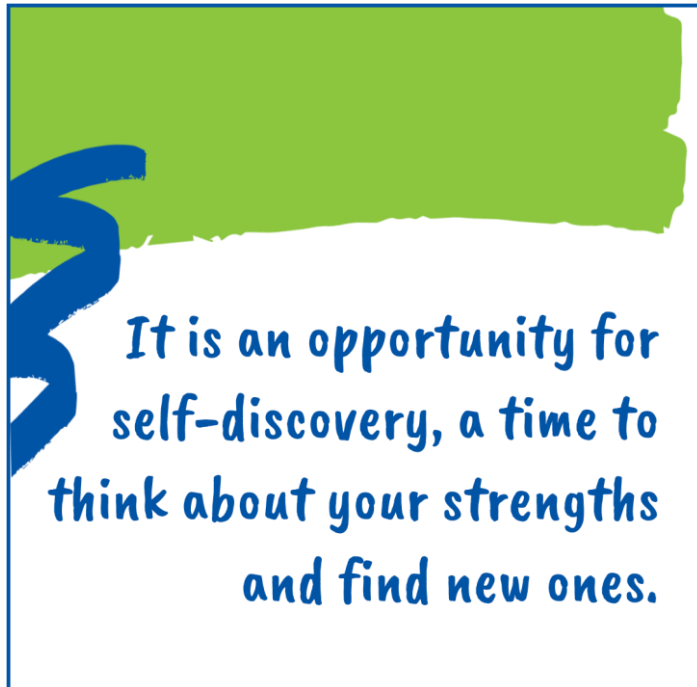


My Career Insights Morrisby Profiling 2025

MY CAREER INSIGHTS



Overview



Learning Intention:

- To introduce students to the Morrisby Careers profiling and the benefits of this program.

Success Criteria:

- I am aware of the structure and benefits of the Morrisby Careers profiling program.

What is the Morrisby Career Profiling?



The **Morrisby Career Profiling** is a tool used to inspire you and give you some guidance as to

- Your strengths and interests
- How to find a career
- Study options

The **Morrisby Career Profiling** is made up of 2 parts:

1. Assessment- This is a series of short questions.
2. Interview with a careers consultant

What is the **Morrisby Profiling**?



Part One: Assessment

It will take approximately **2 hours** to complete the assessment.

This is made up of a series of short questions

- Questions are timed
- Completed online

What to expect:

- There are **8 timed aptitude modules** and **2 multiple choice questionnaires** (interest and personality)

Measures:

- Verbal, numerical, abstract and spatial aptitudes.
- Talents, motivations and personality.
- Work preferences.

The 5 Aptitudes

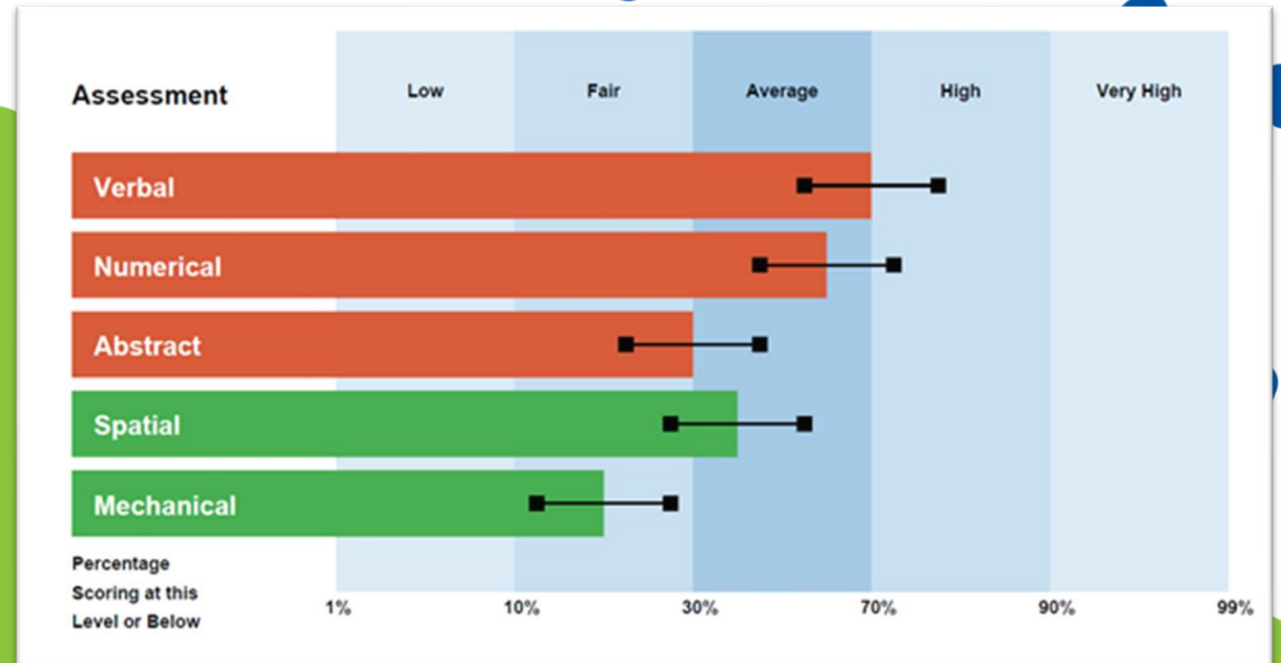
VERBAL – Your ability to use words and indicates potential in dealing with written and spoken information.

NUMERICAL – Your comfort or intuitive insight when using numbers.

ABSTRACT – Your ability to deal with complex problems. This indicates a preference for dealing with real thing and visual information; charts diagrams and pictures.

SPATIAL – Your spatial ability by assessing how well you can visualize 3-dimensional objects from 2-dimensional plans.

MECHANICAL – Your ability to appreciate and solve mechanical problems.

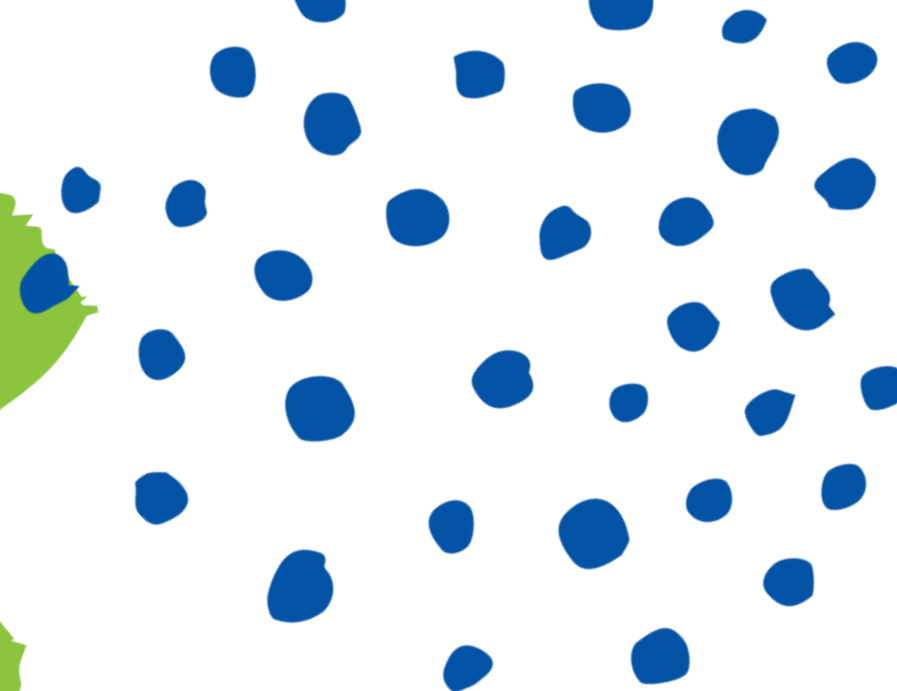


Part One: Assessment

Assessments will take place on:

Tuesday 4 March, Period 3 & 4

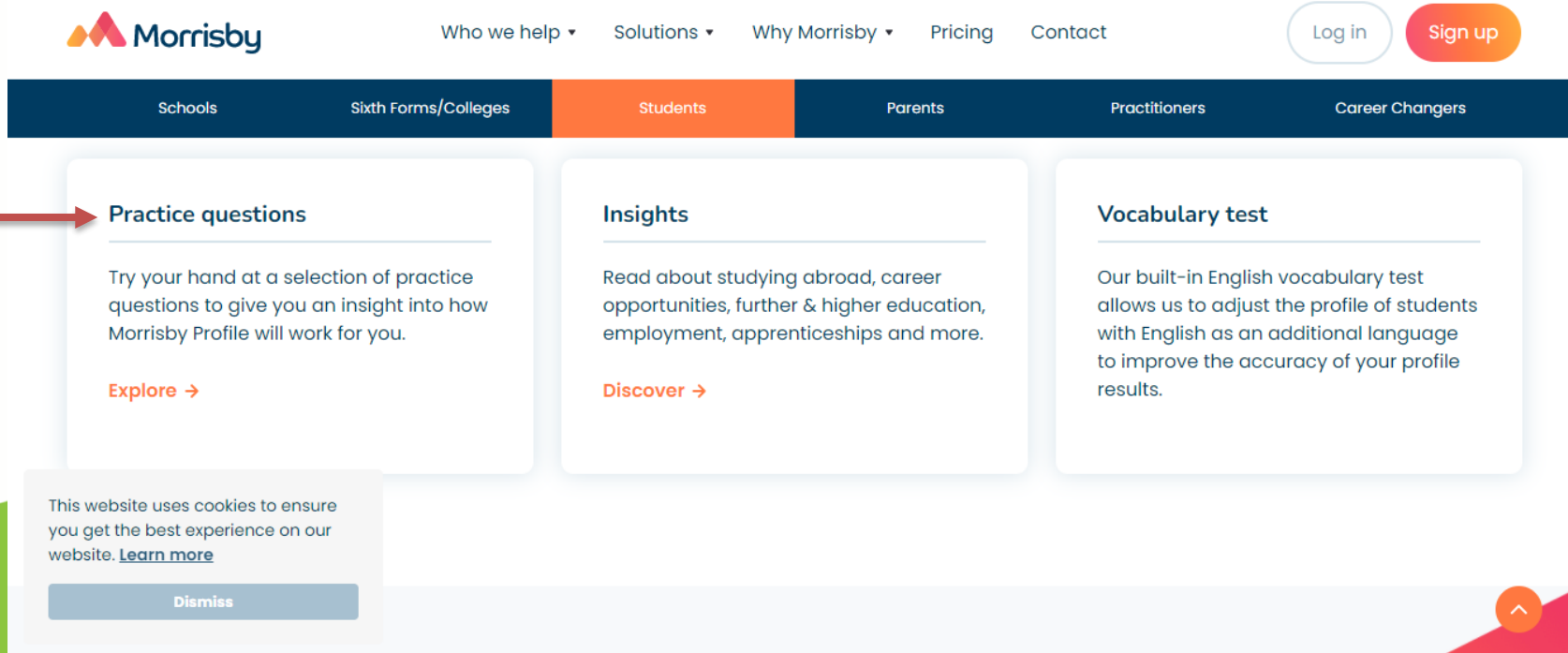
- You **MUST** have a charged laptop with access to the college internet.
- You must know your **@schools** email address
- Will be required to create a password you will remember.



Part One: Assessment

Practice questions:

1. Go to www.morrisby.com
 1. Select the “Who we help” tab
 2. Select the student option
 3. Scroll down to the practice questions.



The screenshot shows the Morrisby website interface. At the top, the Morrisby logo is on the left, and navigation links for 'Who we help', 'Solutions', 'Why Morrisby', 'Pricing', and 'Contact' are in the center. On the right, there are 'Log in' and 'Sign up' buttons. Below the navigation is a dark blue horizontal bar with tabs for 'Schools', 'Sixth Forms/Colleges', 'Students' (highlighted in orange), 'Parents', 'Practitioners', and 'Career Changers'. The main content area features three white cards. The first card, 'Practice questions', has a red arrow pointing to it from the left. It contains the text: 'Try your hand at a selection of practice questions to give you an insight into how Morrisby Profile will work for you.' and an 'Explore →' link. The second card, 'Insights', contains the text: 'Read about studying abroad, career opportunities, further & higher education, employment, apprenticeships and more.' and a 'Discover →' link. The third card, 'Vocabulary test', contains the text: 'Our built-in English vocabulary test allows us to adjust the profile of students with English as an additional language to improve the accuracy of your profile results.' At the bottom, a cookie consent banner is visible with the text: 'This website uses cookies to ensure you get the best experience on our website. [Learn more](#)' and a 'Dismiss' button. A red arrow points to the 'Practice questions' card.

Part One: Assessment

These practice aptitude questions are designed to familiarise you with the style of questions you will be answering in your profiling session <https://app.morrisby.com/practice-questions>



Morrisby Practice Questions

Morrisby Online Practice Assessment

Welcome to the Morrisby Online Practice Assessment

This mini assessment is intended to demonstrate how the Morrisby Online Assessment works, and the sort of questions you will encounter.

Please click the right arrow to continue.



Part One: Assessment Sample Questions



Morrisby Online Practice Questions

Section 1 - Verbal Intro

Section 1 - Verbal

In this part there are groups of five words that have something in common.

You have to work out what these words have in common and then choose the one word from the five options that fits in best. Choose the correct answer by clicking it.

Click the right arrow to try a practice question.

Morrisby Online Practice Questions

Section 1 - Verbal Practice Question 1 of 1

table

stool

chair

cupboard

bed

house

wood

wardrobe

roof

painting

Section 1 - Verbal Practice Question 1 of 1: Answer Explanation

table

stool

chair

cupboard

bed

All of these are items of furniture

house

wood

wardrobe

roof

painting

Some examples



Section 3 - Numerical Practice Question 1 of 1: Answer Explanation

72 66 60 54 48 42 36 ?

Each number is six less than the last

18 21 28 30 34

< >

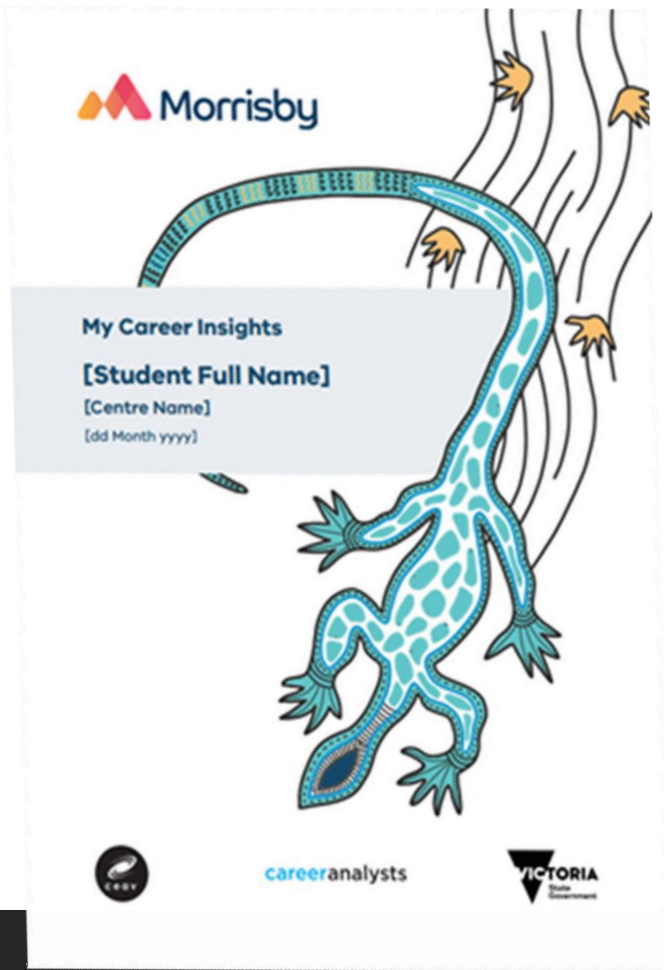
Section 5 - Abstract Practice Question 1 of 1: Answer Explanation

Each shape has two identical overlapping shapes inside it

Circle with two overlapping diamonds Circle with two overlapping circles Square with two overlapping squares Circle with two overlapping circles Square with two overlapping squares

< >

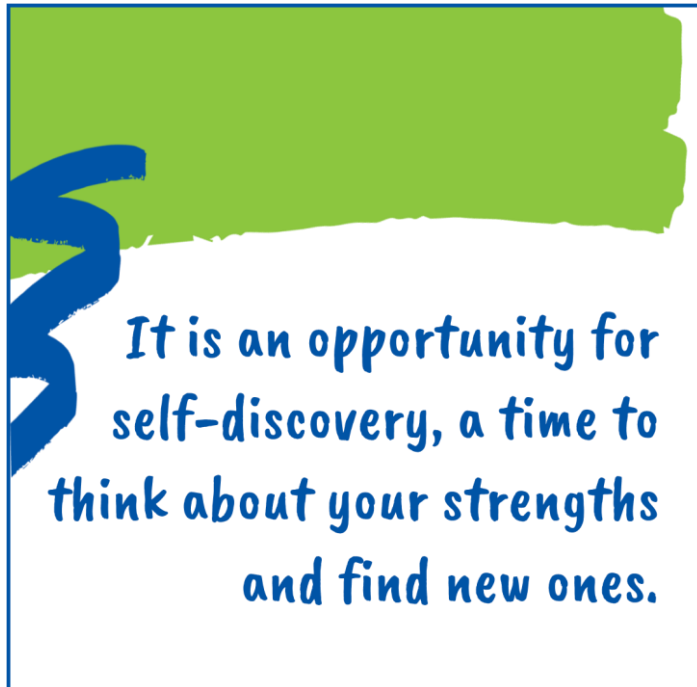
Your Morrisby Profile



Once you have completed the assessment you will receive:

- A digital report
- Life-long access

Part Two- Unpack Interviews



Each of you will have a **30-minute** interview with a careers consultant who will help you understand your results.

Interviews will take place between **Monday 4 August & Friday 8 August (Week 3).**

My Career Insights

Tailored career guidance for your child

Consent to participate

The Department of Education has contracted the Australian Centre for Career Education (ACCE) to provide access to the My Career Insights program to all year 9 students in government schools.

My Career Insights will help your child:

- Learn about what skills and abilities they could bring to a career.
- Find out about what jobs match their abilities, interests and personality, and the subjects they need for those jobs.

As part of the My Career Insights program, your child will:

- Complete a series of online questions and quizzes on the Morrisby website at school (or at home if it cannot be completed at school).
- Receive a Morrisby Profile Report showing the results from the questions and quizzes, which summarises their individual strengths and interests and suggests related career paths and study options.
- Have a 30-minute meeting with a Morrisby-trained professional Career Practitioner, who will explain the report to your child. You can attend this meeting. Please tell the school if you need a telephone interpreting service.

More information about the program can be found at:
vic.gov.au/my-career-insights



Important privacy information:

All student information collected by ACCE (or their consortia partner, Career Analysts Pty Ltd) will be managed in accordance with the Privacy and Data Protection Act 2014 (Vic), the Health Records Act 2001 (Vic), the Public Records Act 1973 (Vic), the Australian Privacy Act and the General Data Protection Regulation (Regulation (EU) 2016/679).

For further information about the way the Department of Education collects and handles personal information, including access, correction and complaints, go to: Schools' privacy policy education.vic.gov.au

ACCE stores your child's data either on physical devices or in cloud services. These are located within the Australia South-East Region or the European Economic Area.

Deidentified information will be made available to departmental staff for research and planning purposes.

Students can access their information via the Morrisby Profile website (<https://app.morrisby.com/>) using their login details. Students have the right to seek access to, or correction of their own personal information. Students can request access to and correction of their information by contacting support@ceav.vic.edu.au

As set out below, there are three options to choose from. Your choice will impact your child's use of Morrisby:

Option 1: Opt-in

I give my consent for: (child's name)			
to complete the Morrisby Profile and the follow-up meeting. By signing, you agree that you have read this Consent Form and consent to your child's personal and health information being collected. This may include information relating to your child's disability status or other factors that may impact your child's ability to complete the full profile.			
Parent/Guardian's Full Name:			
Signature of Parent/Guardian:		Date:	/ /
Student class (if known):			

Option 2: No response

If we do not receive a response from you, your child will have access to Morrisby Careers only. Morrisby Careers is a highly modified version of the full Morrisby Profile that asks your child to consider their interests, preferences and work styles. It will ask your child to provide their full name, email address, date of birth and school name. No health information, such as disability status, will be collected. On completion your child will have access to all career and subject resources and suggestions as well as the free meeting with a qualified career consultant. This will help inform your child's school career education programs and career action plan. However, this modified version will not be able to assess your child's aptitudes, which would be useful for gaining a more detailed understanding your child's strengths and capabilities.

Full profiling, including the aptitudes questionnaires, will become available to your child once they turn 18, or when parental permission is granted.

Option 3: Opt-out

I DO NOT give consent for: (child's name)			
to complete the Morrisby Profile and the follow-up meeting.			
Parent/Guardian's Full Name:			
Signature of Parent/Guardian:		Date:	/ /
If you choose Option 3, your child will not have free access to Morrisby. If access is requested in future, it will be at full program cost.			

For more information about Morrisby visit: morrisby.com/morrisby-profile

Consent via
Compass event

Important to remember:

Your *Morrisby Profile* is all about YOU!

- It is important that we have true and accurate results so that when you have your one-on-one unpacking session, they will be able to advise you based on your authentic Morrisby profile.
- It is important that all answers are your own to make sure the results reflect your true strengths and preferences.
- It is **NOT** an exam- There is no pass or fail.

What students

have to say

about the

Morrisby Career

Profiling

<https://www.tiktok.com/@fgatessecondary/video/7225459150250134786>

