

Northlea Elementary & Middle School Parent Handbook – 2017/2018



2017/2018

Administrators' Message



NORTHLEA

September 2017

Dear Parent/Caregiver:



It gives us great pleasure to welcome you to one of the finest schools in School Board! Northlea Elementary and Middle School is an outstanding because of the commitment of the staff, the support of the parents/caregivers, and the motivation of the students. We provide an exceptional learning environment for the children to develop academically, socially and emotionally. Northlea is a dual track school offering instruction in both English and French. Our staff is caring, dedicated and talented. In addition, we offer a variety of co-curricular teams, clubs and programs for our students.

While at Northlea we encourage both you and your child to become active in the scholastic experience. Involvement in your child's education is beneficial, rewarding, and lasts a lifetime. Northlea enjoys an excellent reputation where staff and parents work hard to meet the needs of our young learners. We have a strong partnership with our parents. They are supportive and involved in our school on many different levels. We value your on-going participation and involvement in the school and look forward to working collaboratively with you.

Use this handbook to assist you in learning more about Northlea. This handbook has been created to help answer many of the questions you may have regarding the programs and routines at our school. Please take some time to review and discuss the enclosed information with your child(ren). We hope that you will find it helpful to organize your child's daily activities and assist them to be successful in their school endeavours. Please keep this handbook for future reference.

We look forward to working with the students and the parents of the Northlea community. We are anticipating that 2017-2018 will be an extremely productive and successful school year!

Sincerely,

Barbara Sandler

Jane Wadden

Ms. Sandler
Principal

Ms. Wadden
Vice-Principal

Welcome to Northlea Elementary Middle School

Welcome (back) to Northlea Elementary Middle School. This handbook is designed to give you an overview of activities within the school and try to answer some frequently asked questions related to Northlea. Please refer to the Northlea website (www.northleaschool.ca) throughout the year as a reference.

Address and Key Contacts Information:

Phone: (416) 396-2395 Fax: (416) 396-2920 305 Rumsey Road, Toronto, M4G 1R4 www.northleaschool.ca

Principal	Ms. Barbara Sandler
Vice Principal	Ms. Jane Wadden
Office Staff	Judy Keith, Helen Saroglou
Home & School President/	Amy White and Arti Panday
School Council Chair	homeandschool@northleaschool.ca
TDSB Superintendent of Schools	Leila Girdhar-Hill (416) 396-9014
TDSB School Trustee	Geri Gershon (416) 395-8408

Divisions:

Northlea Elementary Middle School is a dual track school from Junior Kindergarten through to Grade 8. French Immersion is offered in Senior Kindergarten through Grade 8. Except for language arts, the French Immersion curriculum is the same as the English curriculum. Formal English instruction begins in Grade 4. The English program is offered for all grades and French instruction begins in Grade 4 for the English track.

There are three divisions: 1) Primary: JK to Grade 3, 2) Junior: Grades 4 – 6, 3) Intermediate: Grades 7 and 8. Other programs include library, special education, vocal music, drama, instrumental music and physical education.

Hours of Operation:

Grades 1 – 8	Entry Bell Rings at 8:45 Lunch: 11:35 – 12:40 Dismissal: 3:30
Kindergarten	Start: 8:50 Dismissal: 11:20 Start: 12:50 Dismissal: 3:20
School Office	8:30 – 4:30

Remedial work completion: Occasionally, students may be asked to stay after school to complete unfinished work. If students in Grades 1 – 5 are asked to stay after 3:45 p.m., parents will be notified.

Safe Arrival Program

One measure of keeping students safe is ensuring students have safely arrived at school. It is imperative that if your child is going to be **absent or late** for any reason, you leave a message on the Safe Arrival line (416) 396-3775.

Safe Arrival at 416-396-3775.

The Safe Arrival voice mail system is **available 24 hours a day** to take your message. **Please call before 8:30 a.m. or 12:30 p.m. for a same-day absence or late arrival.** Remember that messages left for a busy teacher may not get transferred to the Office Staff, especially if the teacher is sick that day.

We are on an automated call-out system for our Safe Arrival Program. If there is no message about the absence, the system will make attempts to contact you to determine the reason for the absence.

Parents/Guardians of students who have an unexplained absence (one where the school has not been previously notified) will be contacted to verify the reason for the absence.

The system call-out will work as follows:

- Parents/guardians identified in TDSB's Student Information Systems who has access to student records, and emergency contact with priority 1 or 2 will receive a call.
- When you receive the call, you are **required to listen to the entire message and follow the prompts accordingly.**
- You will be asked if you are aware or unaware of your child's absence.
- If unaware, you will be asked to call the school immediately (416-396-2395).
- If you are aware of the absence, you will be asked to enter the reason for your child's absence. At the end of the message, you will have to press 2 to confirm you received the message.
- If you do not confirm receipt, you will receive a call on your mobile phone.
- If there is no response from a Priority 1 contact, this same process will be followed for Priority 2 contacts.
- If there is no contact with either Priority 1 or Priority 2, this entire process will be repeated 3 times in 10 minute intervals.

Should the school be unable to determine an unaccounted student's whereabouts the police will be notified to assist.

In the evening, all parents/guardians of students who were late that day will receive a call informing them of their child's tardiness.

With this in mind, it is important that your contact information on file at the office is up-to-date. Please let the office know immediately if your contact information changes at any time throughout the school year.

We recognize that regular attendance is essential to the safety, academic success, and well-being of all students. Thank you for your continued cooperation with keeping your child(ren) safe and accounted for.

"Safety First" for our Students: Northlea's Visitors' Policy

Northlea has a *Visitors' Policy* to ensure the safety of our students and staff. It is monitored and reviewed every year. The Visitors' Policy has many purposes.

- To enhance the safety of the students, staff and volunteers at Northlea, while maintaining a welcoming environment where parents are encouraged to participate in school life.
- To easily identify visitors, volunteers and parents in the school.
- To help teachers identify possible intruders in the school.
- To provide administration with the names of people in the school in case of an emergency.

Procedure: After 9:00 a.m. all doors, are locked for safety reasons. Please come to the NORTH DOORS and ring the buzzer. Every visitor entering Northlea during school hours is required to sign-in at the Office and pick up a visitor's tag to wear for the duration of their visit. Please remember to sign-out at the Office and return your visitor tag before you leave.

School Volunteers

Northlea values the tremendous contributions of the parents and community volunteers who give so much of their time and effort to make our school a better place. Teachers typically provide volunteer opportunities with classroom activities, excursions and special events. Parents are encouraged to be involved in the school and parent volunteers are greatly appreciated by the Home & School for their assistance with a variety of events. If you wish more information or to volunteer, please contact the Home & School Chairs, Rachel Chernos Lin, Alexis De Castro and Kara Pearson Kane, through the Home and School e-mail at homeandschool@northleaschool.ca, or check out available positions on-line at www.northleaschool.ca

1. The Ontario government requires that all school volunteers obtain a **Police Reference Check (PRC)**. The intent of this legislation is to ensure that schools and classrooms are safe places for students. The cost of the initial PRC is \$20.00 and at the volunteer's expense. Forms for these checks are available in the school office. To help facilitate this process, parents interested in volunteering may pay the fee via certified cheque or money order made payable to Toronto Police Services and then must also complete the application form in the school office. Once you receive the CLEAR form at home (approximately 4-6 weeks) please **resubmit** to the office to clear in our system. ** After the initial PRC, the volunteer must have their records updated every two years by completing an *Offence Declaration*.

Getting to School

Northlea encourages WALKING TO SCHOOL. Try walking to school EVERYDAY. Every Wednesday is Walk to School Day. The kids love to walk. Live too far away to walk? ... Park a block away - enjoy the exercise!!

I-Walk Week – October 2 - 6, 2017
International Walk to School Day – Wednesday, October 4, 2017

School yard safety

For safety reasons, bikes, skateboards or scooters must be walked through the school yard during the hours of **8:00 a.m.** to **4:30 p.m.** Students who do not abide by these rules risk having the item confiscated. Heelies and roller blades must be removed when entering school property.

Traffic Safety & Parent Safety Program

WALK: The optimal choice is to walk our kids whenever possible. Exercise, a couple minutes chatting together and no traffic hassles. Who can beat that?

PARK: If you can't walk, there is plenty of legal parking available where you can park and be on the school property within minutes. Please observe the parking signs to help keep our students free from harm and teach them respect for the law.

Daycare Parking Lot: Please note that the small parking lot located at the North West side of the school is designated for Northlea Child Care Centre drop off and pick-up only! It is closed to all parents between 8:30 a.m. and 8:45 a.m. and from 3:30 p.m. to 3:45 p.m.

Staff Parking Lot): Also note that there are no designated parking spots for visitors in the larger parking lot at the back of the school. All spots have been assigned to Northlea staff.

Parents are not permitted to park in this lot for any reason during school hours.

SAFETY: In the event that we need to drive our children to school – Safety is Key!

Parent Safety Program (PSP)

To address the ongoing traffic issues around the school, Northlea has partnered with the Toronto Police Service to run a Parent Safety Program (PSP) – one of many in Toronto. A **PSP** is a parent run initiative. Its motto is '*Choose Safety Over Convenience*'. The goal of the PSP is to eliminate the traffic hazards near the school using volunteer visibility and education.

The PSP also offers a **Kiss and Ride** program, to offer a legal, safe drop off for students arriving to school in a vehicle. The Kiss and Ride operates from 8:30 to 8:45 in the morning. It will be staffed by parent volunteers. Cars will queue at the designated spot on the south-west side of the school on Sutherland Ave. When cars pull up between the pylons, volunteers open the car door and assist the students (who are ready to go!) from the car. They will then safely direct the student into the school yard. Each car will wait (patiently!) until it pulls up to the front of the queue where the volunteer is waiting.

Enforcement: Police Officers provide increased supervision and enforcement at the school. Anyone who stops in the bus zones and no stopping zones, or parks in no-parking zones, may be ticketed.

Foot Patrol

This program supports safe travel to school by having Northlea students in Grades 6 to 8 assist with safe crossing at intersections near the school. Students in "Green Vests" have been monitoring the intersection of Donlea and Rumsey since the Spring of 2017 to support safe crossing at intersections.

Children Leaving the School

Students must sign-out at the Office if they are leaving during school hours. A note is required from a parent or guardian if the departing student is not accompanied by a parent or guardian. Kindergarten, Primary and Junior students will only be released to a parent, guardian, or designated caregiver/babysitter. If the adult picking up a student is not the parent, guardian, or designated caregiver/babysitter, documentation to verify identity will be requested (e.g., Driver's License, etc.).

In the case of lateness, students arriving at the start of morning announcements may proceed directly to class and the teachers will mark them late on the attendance records.

Once the announcements are over and the attendance folder has been sent to the Office, students are required to sign-in at the Office. Students may be asked to make up time missed due to lateness. Parents will be notified in the case of persistent lateness.

Communications

Parents are encouraged to contact teachers if they have any questions or concerns about their child's academic or social needs at school. Please call or send in a note to arrange a mutual convenient time to discuss your concerns.

The TDSB has a 'Standards and Practices for Parent Involvement in Schools' policy which may be viewed at the TDSB website www.tdsb.on.ca. Follow the parent link to view this policy. A copy of the Parent Concern Protocol is also available in the School Office.

In an effort to reduce the amount of paper going home, all parents/guardians will receive the weekly communication emails as well as any additional updates. Email lists will be compiled at the beginning of the year by the class parents from the information you complete on the *Permission to Contact Form*. Northlea EMS and H&S/Council will have all distributed school information available on www.northleaschool.ca as well.

Northlea Home & School Website	Northlea Home & School maintains a website at www.northleaschool.ca offering useful information to our parent community. Including the weekly, "Northlea News." Check it out frequently for updates and information.
Northlea News	It provides families with detailed information regarding specific school happenings, activities and excursions. Often it includes updates from joint staff-parent committees and the Home & School Council. It will hopefully provide an opportunity to dialogue with your child about school and/or give you an opportunity to stay informed.
Northlea Profile	The <i>Northlea Profile</i> is a brief overview of our school. It includes a summary of what sets Northlea apart from other schools and highlights

	parent and community engagement.
	The Northlea Profile is available in hardcopy in the Office and on-line through the TDSB website. The school profile is updated annually.
TDSB Website	The Toronto District School Board website is www.tdsb.on.ca .

Northlea Code of Conduct

Northlea Elementary & Middle School is committed to creating a positive learning atmosphere in which all students have the opportunity to receive an education through which they may achieve their potential. Our goal is to assist children to assume responsibility for their own behaviour by developing a sense of mutual trust, respect and responsibility.

Northlea's present Code of Conduct centers on the "High Five" rules. These rules are:

1. Treat all people with respect and consideration. Speak politely.
2. Walk in an orderly manner when entering and exiting the school, on the stairs, and in the halls.
3. Work and play co-operatively and safely with everyone.
4. Keep hands, feet and objects to yourself.
5. Respect our environment. Keep our school clean and litter free.

Students	Staff	Parents
<ul style="list-style-type: none"> ▪ show respect for themselves, for others, and for those in authority ▪ obey Northlea's Code of Conduct and Dress Code ▪ be courteous to everyone ▪ resolve conflicts and difficulties through peaceful means ▪ strive to have a positive attitude towards self and school by contributing as much as possible to the life of Northlea EMS ▪ respect the right of everyone to a school environment which is free from fear, prejudice, and distraction ▪ respect the property of fellow students, the school and community ▪ attend regularly and punctually ▪ be prepared for school by 	<ul style="list-style-type: none"> ▪ demonstrate respect for all students, staff, parents, volunteers, and the members of the school community ▪ implement Northlea's Code of Conduct and Dress Code ▪ be positive role models ▪ establish and maintain a school environment conducive to learning ▪ encourage each pupil to work to his or her maximum potential academically and socially ▪ approach the education of the student in a just and fair manner ▪ communicate information on the behaviour and progress of pupils to parents and administrators ▪ identify pupils with special needs and involve appropriate personnel and 	<ul style="list-style-type: none"> ▪ show respect for the administration and school staff ▪ support Northlea's Code of Conduct and Dress Code ▪ be positive role models ▪ encourage self-discipline and the development of responsibility at home, at school and in the community ▪ encourage each child to work to the best of his or her potential, academically and socially ▪ take time to listen, talk, and read with your child ▪ ensure that each child attends school regularly and punctually; call Safe Arrival at 416-396-3775 to inform the school of absence or late arrival ▪ inform school staff of any special circumstances which

bringing necessary materials and completing all assignments on time	parents/guardians <ul style="list-style-type: none"> ▪ encourage and demonstrate appropriate means of handling anger and dealing with conflict 	may affect a pupil's progress and/or behaviour <ul style="list-style-type: none"> ▪ encourage and demonstrate appropriate means of handling anger and dealing with conflict
---	---	--

Electronic Devices

All communication devices (cell phones, IPODS, Video Games, etc.) must be powered off and stored out of view during instructional class and other areas of the school unless otherwise authorized by the Principal. This policy extends to school organized activities and excursions off school property. Students may be subject to disciplinary action if they use electronic means to intimidate, harm, exclude or ruin a reputation – which includes the use of emails and instant messaging, text or digital imaging sent on cell phones, web pages and web blogs, chat rooms and discussion groups. If communication is urgent between a parent and child, an Office phone will always be available.

Code of On-Line Conduct

The Toronto District School Board (TDSB) is committed to providing students with access to the Internet through the Board's computer network. The Internet is a rich source of information and opportunities to enhance student learning. However, increased access to the Internet raises issues that must be addressed and understood.

The Toronto District School Board has addressed these issues through a Code of On-line Conduct which applies to students, staff, and all other users of electronic resources accessed through the facilities of the TDSB including the Internet. This Code of On-line Conduct includes sections covering Personal Safety Rules, Unacceptable Sites and Materials, User Guidelines, Prohibited Uses and Activities, On-line Publishing, and Liability. It is available on the TDSB Web site at http://www.tdsb.on.ca/communications/code_of_online_conduct/occ.html or upon request from the school administration.

The Board expects that students will be responsible in their use of the Internet through the facilities provided by the Board.

Wireless Use Policy

We are excited to let you know that Northlea is now a wireless environment. This will provide the school with an opportunity to support and enhance your child's learning.

Students accessing the wireless network with any device are reminded that they must at all times abide by the TDSB Code of Internet Use. Students may only use electronic equipment in the classroom. Devices are not permitted to be used in the halls or in other areas of the school

including the schoolyard. The use is for **educational purposes only and subject to the discretion and direction of the teacher.**

Students in **Grades five to eight** are permitted to bring in computers for use in school. They are reminded that they are solely responsible for their equipment; the school cannot be responsible for lost or stolen devices, nor do we have storage facilities. Students are expected to put any electronic devices in their locker for safe keeping while they are being used at school.

Students in **Grade four** may bring in a device to support their learning only after consultation with their classroom teacher. Students in **Grades 1 to 3 are not permitted to** bring personal electronic devices to school.

For our purposes a computer is defined as any electronic device that can access the wireless network. Do not leave personal computers unattended in classrooms, common areas, or lockers.

Students who are using their personal computers in such a way that is not permitted under the TDSB Code of Internet Use will be asked to shut down their computers and may be subject to further disciplinary action.

Failure to adhere to the school's policy for use of personal electronic devices may result in a range of consequences including communication with parents, confiscation of the device and suspension.

Dress Code

Northlea has a modest dress code. Students are expected to dress in an age-appropriate manner consistent with a focused, positive learning environment.

1. Boots, hats or hoods, coats and other outdoor attire are to be worn outdoors only.
2. Please dress for the weather – winter clothes in winter, sun hats on sunny days and rain gear on rainy days. We endeavour to be outdoors daily.
3. Clothing with inappropriate language, messages or images may not be worn.
4. Clothing items with stereotypical images and names related to cultural groups should not be worn to Northlea.
5. Shoes must be worn in the school at all times.
6. Shorts/track pants, t-shirts (preferably Northlea garments) and running shoes must be worn for Physical Education.

Clothing deemed inappropriate will be addressed by the full staff including the administration.

Consequences for Inappropriate Behaviour

Teachers and/or administration may impose any of the following specific consequences as necessary.

1. verbal reprimand and/or warning
2. written behaviour contract by student
3. withdrawal of privileges
4. informal or formal interview between any or all of student, teacher, principal or parent/guardian
5. detention or temporary removal from the class

6. letter or call by pupil, teacher, or administration to parent/guardian
7. involvement of School Team, support staff and/or outside agencies
8. community service
9. replacement or payment for lost or damaged property
10. formal suspension in keeping with board policy

Homework Guidelines

It is the Toronto District School Board's belief that homework is an engaging and relevant learning activity. In the Primary and Junior Divisions at Northlea homework will **not be** marked and the purpose is to practice and build on skills already taught in the classroom. It is important that homework be done independently by children. While parents and families can encourage and guide, we request that is done on their own. Staff will provide feedback to students after homework is completed. These feedback may include a written comment or be motivational in nature. There are four types of homework: completion, practice, preparation and extension. Highlights include:

- The TDSB Homework Policy balances time required to complete homework with the importance of personal and family wellness and the wide array of family obligations experienced in our society today.
- Wherever possible, homework will be assigned by teachers in blocks of time so that families can best support homework completion by balancing the time required to complete homework with extra-curricular activities scheduled outside of the school day and activities that support personal and family wellness.
- No homework will be assigned on school holidays or days of significance.
- The administration will speak about the Homework Policy at Northlea on Curriculum Night.
- Homework should not be assigned to kindergarten-aged children. Rather, families are encouraged to engage in early learning activities such as playing, talking and reading together in English or in the family's first language.
- In Primary, the focus will be on a weekly homework package and daily reading and the use of an online Math website called, IXL Mathematics.
- In Junior, the focus will continue to be on daily reading, staff will either assign a weekly homework package in the area of writing and mathematics or assign work during the week. They will also once again be using IXL Math as a component of their program.
- Intermediate students will focus on daily work completion, test preparation and assignments. Staff will also begin to utilize an online calendar and may incorporate IXL Math into their program.
- Homework for older students should be between 60 to 90 minutes for Grades 7 and 8 students
- Where appropriate, there will be progressive consequences for incomplete homework. Punitive measures are not appropriate as they provide powerful disincentives.

Physical Education Program

At Northlea we offer a wide range of physical education activities as part of the curriculum and through our co-curricular activities.

ELEMENTS OF RISK NOTICE

The risk of injury exists in every athletic activity. However, due to the very nature of some activities, the risk of injury may increase. Injuries may range from minor sprains and strains to more serious injuries. These



injuries result from the nature of the activity and can occur without fault on either the part of the student, or the School Board or its employees or agents or the facility where the activity is taking place. The safety and well-being of students is a prime concern, and attempts are made to manage the foreseeable risks inherent in physical activity as effectively as possible.

Clothing for Physical Education

Students are able to do their best when they wear appropriate clothing.

Junior and Senior Kindergarten: Students should wear appropriate running shoes and clothing that allows them to participate in a full range of physical activities on days with scheduled gym classes. Girls are encouraged to wear pants, leggings or shorts on 'gym days'. In the second term, children must wear shorts, a T-Shirt and bare feet during the unit on gymnastics. Your child's kindergarten teacher will provide you with a schedule and a reminder when the children begin gymnastics.

In Grades 1 to 8: It is important for students to be prepared for Physical Education classes. **It is mandatory that students wear a T-Shirt, shorts, and running shoes for gym classes year-round.** Northlea T-Shirts will be available for purchase in September and will include the Northlea Knights Logo above.

During the colder months, students in Grades 1 & 2 are asked to wear their T-Shirt and shorts **under** their regular clothes. For safety reasons, Grade 1 & 2 students do not use the change rooms.

Grade 3 – 8 students may use the change rooms as long as they change quickly and behave appropriately.

School Teams

There are many opportunities for students to work towards a personal best and experience the fun of competition in a wide range of sports through Northlea's school teams.

Students from Grades 5, 6, 7, and 8 are selected for school teams based on the following criteria:

- | | | |
|-----------------|---------------------------|--------------|
| • Skill level | • Sportsmanship | • Attitude |
| • Participation | • Effort | • Attendance |
| • Punctuality | • Interaction with others | |

In addition to participating in Cross-Country, Swimming, Rugby and Track & Field, students may only participate on one team per sports season. This ensures more access for students to participate on school teams.

Practice times vary by sport and may be held before school, over the lunch hour or, occasionally after school for older students.

Students should ensure that they have proper footwear for each sport: court shoes for basketball, running shoes for cross-country running, etc.

Students who are chosen for a team are expected to continue to fulfill the above mentioned expectations through practices during the course of the season. As a result of large numbers of students at Northlea, not every student will be able to make teams they try out for.

The teachers who are responsible for each School team will issue a separate code of conduct form for each participating student and their parents to complete which clearly states School, student and parent expectations and responsibilities. These must be completed and returned to the team's teacher as requested.

Daily Physical Activity (D.P.A.)

The participation of students in Daily Physical Activity (D.P.A.) is a critical component of the government's overall *Healthy Schools* initiative. The policy requires school boards to ensure all elementary students, including students with special needs, have physical activity each and every school day. As a result of daily physical activity, elementary students should experience enhanced learning opportunities while improving or maintaining their physical fitness, and their overall health and wellness.

Since physical activity is only one component of a complete health and physical education class program, there will be days when a Health and Physical Education class does not include physical activity. On these days, and on days when no health and physical education class is scheduled, other opportunities will be provided for students to have at least twenty minutes of physical activity during the school day.

At Northlea, all school staff have been involved in the planning and implementation of the Daily Physical Activity program; however, DPA will be delivered by the homeroom teacher. All activities will be adapted as appropriate to ensure that students with special needs can participate in them. Such adaptations will be consistent with the accommodations and/or modifications that are found in the student's Individual Education Plan (IEP).

Being on time for school has always been crucial as at any other school in the Toronto District School Board. However, more than ever before, students will be expected to be at school on time each day so that they do not miss and/or disrupt the daily physical activity program (especially if it is occurring during period #1). In addition, all students will be expected to wear appropriate running shoes for safety and proper participation.

Positive experiences with physical activity at a young age help lay the foundation for healthy, productive lives. Regular physical activity can promote the growth of strong bones and muscles, help to develop good posture and balance, strengthen the heart and lungs, and generally help to improve and maintain fitness.

Cross-Country

Northlea likes to run! The Northlea Cross-Country program is arguably the most successful such initiative in the entire City of Toronto. In 2016, Northlea had over 300 students come out for Cross-Country and attend the first meet with approximately a third of the students qualifying for the second meet, and many of those students going all the way to the *City Championships*.

2017/2018

Those who attend a race are truly amazed at how inspiring it is to see the kids putting 100% effort in their races and cheering each other on. All students who participate in the practices are taken to the first meet and as a result, the meet looks like a sea of grey and green!

The strong program is the result of a lot of hard work on the part of many, including 4 amazing co-coordinators (who are thankfully returning!), Mrs. Ossher and other teacher volunteers, the parent coaches and the many parents that volunteered to come and supervise at the meets! Finally, last but not least is the hard work and dedication of the Northlea students. We have a program that is envied by many schools and can continue that way for years to come if we continue as a hardworking group, dedicated to enlightening children to the joy of running!

The first practice of the Cross-Country season 2016 is on Wednesday, September 7th at 7:45 a.m. Permission forms will be distributed that allow students to go off property to train (properly supervised, of course) and attend the races very early in the first week of school. Those forms need to be returned by Friday, September 9 at the latest.

Extra help is always welcome! On race days, we need lots of parent volunteers. If you have some interest in coaching a specific grade group, please email coordinator Alexis de Castro at alexisdecastro@bell.net or Megan O'Connell at meganoco1@icloud.com

Library

Library Hours: 8:20 – 11:35 a.m. and 12:45 – 3:45 p.m. Monday to Friday
Library Contact: Teacher-Librarian, 416-396-2395 ext. 20110

Lending Policy

Students may take up to 4 items at a time on their library card. Books are on loan for two weeks. Students with late library items cannot borrow books until the late items are returned. Parents are also invited to take out books for their children and may exceed the four item limit when using their child's library card. Library books should be kept in a special place at home. Students and their parents are responsible for items signed out to their accounts. Damaged items should be brought to the attention of the Teacher/Librarian upon return. Items that are lost will be charged replacement costs (see below).

Late Notices and Lost Items

Late notices are sent out twice a month. Students with late library items cannot borrow books until the late items are returned. Items late for more than a month are presumed lost.

There are standard TDSB lost item charges. Cash payments are processed by the library. Cash refunds are issued to the borrower whenever the item is returned. Replacement Costs: Paperback: English \$10, French \$15, Soft cover items: English \$15, French \$20, Hard cover items: English \$20, French \$25. Videos are not loaned to students.

Kindergarten Book Loans

Kindergarten students use a Library book bag that contains their library card information. Kindergarten books are borrowed for one week. Kindergarten book bags are supplied by the library and are required for kindergarten students to borrow a book.

Parent Volunteers

Parent volunteers who can offer an hour or so, on a weekly basis are asked to contact the teacher-librarian. Please note that if you volunteer anywhere in the school a Police Check is required.

Book Fairs

At least one book fair is held each year at Northlea. Funds raised by the book fairs go to support library materials and programs.

Co-Curricular Music at Northlea

CHOIRS	
Junior Choir Grades 5 & 6 Under the direction of Ms. Malach	<p>The Junior Choir competes in several categories in the annual Kiwanis Music Festival each February where Northlea's students have shown excellence year after year. In addition to the regular performances, each year the Junior Choir enjoys appearing at one or two special venues.</p> <p>Interested students must sign an agreement about expectations for behaviour and attendance. Sign-up forms are sent home with the students in September. The Junior Choir holds weekly rehearsals from October through May. All rehearsals feature piano accompaniment. Choir members are asked to contribute a fee at the beginning of the year to cover the cost of sheet music and the accompanist.</p> <p>In addition to the required attire above, Junior Choir members are also supplied with a green Northlea vest to be worn at all performances and returned at the end of the year.</p> <p>The Junior Choir relies on <i>parent volunteers</i> to help organize and supervise performances and special events. Parents receive lots of notice and our enthusiastic singers welcome your support.</p>
INSTRUMENTAL MUSIC	
Instrumental Music: Grades 7 through 8 Under the direction of Ms. Loucks	<p>Starting in September, students will commence the Instrumental Music Program at Northlea in Grade 7. Students in Grades 7 & 8 will receive musical instruction twice weekly for 50 minutes. Students are assigned to an instrument based on a number of factors including a balanced class instrumentation model. In general, students will begin playing their assigned instrument during the second Instrumental Music class back in September.</p> <p>All students are expected to have and/or purchase the class Method Book for use during Grades 7 & 8. In addition, students have the option of owning, renting or borrowing a school instrument. There is a maintenance fee charged for the use of school instruments, and for sanitary reasons, a mouthpiece must be purchased.</p>

Music is an important part of what makes Northlea special. All students have opportunities to perform through classroom choirs, the Junior Choir and the Band. These groups perform at the December Winter Holiday Concert, Kiwanis Music Festival in February and the Spring Concert in May. For performances, all students should wear a plain, white, long-sleeved shirt or turtleneck, with navy blue pants for boys, and either navy blue pants or a navy blue skirt with navy tights for girls.

Playground

The playground is the property of the Toronto District School Board and is under school jurisdiction during the school day. The community has access to the playground outside of the school day. The schoolyard is supervised before school from 8:35 to 8:45, following dismissal from the lunch program, and recess periods. Kindergarten supervision is 8:35 – 8:45 for the morning session and 12:40 -12:50 for the afternoon session in the designated playground at the front of the school. The Junior/Intermediate climber at the South End of the school is for students in Grades 4 – 8. The Primary climber at the North End of the school is for students in Grades 1 – 3.

Scooters, Roller Blades, Bicycles and Skateboards are not to be used on school property between 8:30 a.m. and 4:30 p.m., Monday through Friday.

KINDLY RESPECT THAT DOGS ARE NOT ALLOWED ON THE SCHOOL PROPERTY AT ANY TIME. It is a health and safety concern. Additionally, with the effort the community has put into raising money to redo our field, it is our desire to maintain it for as long as possible. This includes eliminating all dog excrement. In addition, dogs on school property during the school day pose a potential safety issue for children. Furthermore, dogs should never be left tied up and unattended at any of the school fences.



Lost & Found

Northlea Home & School Association maintains a Lost & Found box located in the lower hallway between the North and South gyms. Please check the lost and found regularly for any lost items. During the **third week of each month**, items will be displayed on tables between the North & South Gyms. All classes will visit the tables during this week to claim items. At the end of the fourth week, the items will be donated to a worthy cause.

Please label all items with a last name and phone number.

Peanut Nut/Tree Nut “SAFE” School



Below is our new Peanut and Tree Nut Policy at Northlea. This past school year a committee of parents and staff reviewed our policy and made some changes for this upcoming school year.

Parents needing to discuss possible additional accommodations for their child should speak to the administration. The administration may need to adjust certain aspects of this policy to meet the needs of individual students at Northlea.

The TDSB does its best to ensure the school/learning minimizes the exposure of identified causative allergens/agents as part of a prevention plan whenever possible. Despite efforts to reduce the risk of exposure to zero, the Board cannot ensure an allergen/agent-free school/learning environment. The TDSB has no legal responsibility in any jurisdiction to reduce the risk of exposure to zero.

Northlea has a number of students in our school with potentially fatal nut allergies. As a result, we are a peanut/tree nut “SAFE” school. This means that products containing any tree nuts or peanut ingredients are **not** allowed in the building or on the property. Parents are asked to ensure they review this policy with their child and ensure all food, lunches and snacks brought from home do not contain these products. As well, washing of hands prior to coming to school is much appreciated and recommended. Lunches and snacks are **not to be shared** at school under any circumstances.

Northlea has events throughout the school year that involve **shared foods** that are provided by the Northlea community. When bringing food from home for these events, which is not commercially purchased (ex; home baked goods), the food items are required to be accompanied with a detailed list of ingredients (flour). This is to ensure that the all food entering the school, that is expected to be shared, is free from peanuts and tree nuts. If these items do not have an ingredient list attached they will not be served. Fruits and vegetables are permitted and recommended to be part of any event provided they are washed thoroughly.

Ingredients purchased from places like the Bulk **Barn** include trace amounts of nut products and **MUST NOT** be used in any food items brought into the school. Please always remember to read labels to ensure that there is no “may contain peanuts/tree nuts” warning.

The committee identified different scenarios where food is being prepared and/or consumed at Northlea.

Food based curriculum

All food and related food preparation products (ex. flour) and other items that are part of the curriculum (ex. kindergarten play dough or letter day materials) must be made at school by staff/parents using ingredients from an approved supplier. The approval of such a supplier is done by the school administration only. Food bought for celebrations (ex. 100's day) must come from a supplier that is also approved by the school administration. The school will work with staff and parents to generate a list of peanut/tree nut free suppliers. This policy applies to all grades to maintain consistency across the division. In most cases food preparation or consumption will not be a component of the field trip. Trips where students may be required to bring a lunch follow the same protocol as our in school policy. Any field trip that potentially does have food as a component needs will be discussed with the administration prior to being booked. The administration will determine next steps and determine the viability. Students are not permitted to purchase food on field trips. In some cases (ex. ski day) exceptions will be made subject to the approval of the administration.

Special Events in the classroom

For any special events (ex. parties, holiday celebrations, etc) taking place in class the teacher or designate will request AT LEAST one packaged, certified peanut/tree nut free product. All home baked goods coming into the class must include a list of ingredients. . If these items do not have

a list attached they will not be served in class. Fruits and vegetables are permitted and recommended to be part of any celebration provided they are washed thoroughly. **This policy is applicable K-6 students.**

Fundraising by Students or Parents

All bake sales in school will include a separate certified peanut/tree nut free table with purchased and pre-packaged items that are made in a certified nut safe facility. All home baked goods coming into the school must include a written list of ingredients. If these items do not have a list attached they will not be permitted to be sold or served.

Food for Family Fun Night and the Welcome Back BBQ, must not contain any ingredients with peanuts/tree nuts. All food that is packaged must have an ingredients list that is available for families to read and check if needed. Any baked products for these events will include a separate certified tree nut/peanut free table with purchased and pre-packaged items that are made in a certified nut safe facility. All home baked goods coming into the school must include a written list of ingredients. If these items do not have a list attached they will not be permitted to be sold or served.

Special events outside of school property

Events outside of the school that involve food being served to Northlea students, parents or families will ensure that in the ingredients there are no peanuts/tree nuts. However, the facility or venue may potentially have nut products in their kitchen and families will need to determine the potential impact on their child in attending such an event. There also may be times when food is purchased (ex. peanuts at the baseball game) that contain nut products and as a result we can't guarantee a nut free environment.

Parent Protocol

If your child has an anaphylactic allergy they are required to follow the policy below.

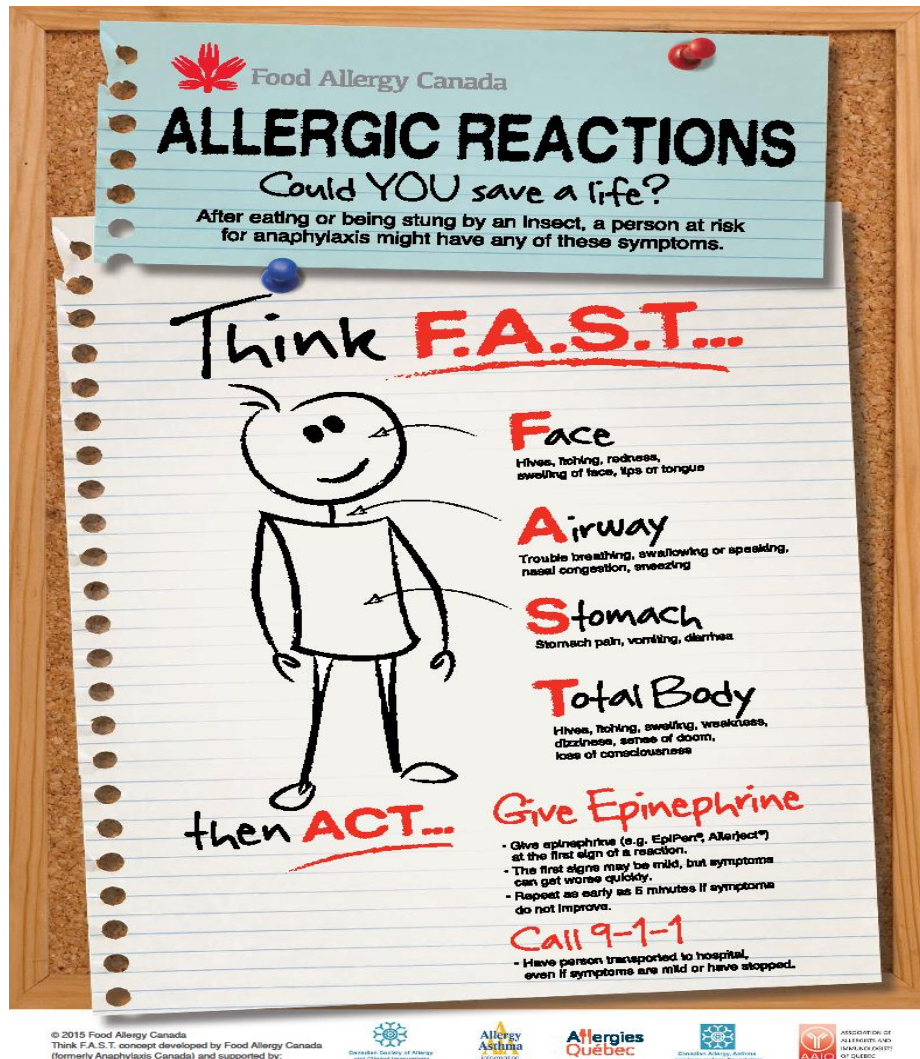
Upon registering your child please inform the office staff of their ***anaphylactic allergy***.

The principal will convene a meeting with parents and/or guardians to discuss the issue and the risk for anaphylaxis reaction. They will gather medical information related to the condition including: identified allergen(s), severity of allergy and past incidents of anaphylactic reactions. This will help the school get a profile of the impact of this on the student. The student with anaphylaxis may be present at that meeting. The principal will also follow up with appropriate school staff. The family is required to update the principal on changes to their child's medical condition and they will pass this onto school staff.

If YOUR child has an anaphylactic allergy they are required to have two EpiPens at school: one for the Office and one for the classroom. Related medical forms regarding this allergy must be filled in annually. These forms include 536A, Administration of

Anaphylaxis Information

Anaphylaxis (pronounced *anna-fill-axis*) is a serious allergic reaction that is rapid in onset and may cause death. Peanuts, tree nuts, sesame, soy, seafood, wheat, eggs, milk, mustard and sulphites are the food allergens most commonly associated with severe allergic reactions in Canada.



For more information on this allergy please visit: <http://foodallergycanada.ca/>

We thank you in advance for your co-operation by ensuring all children at Northlea are safe.

Birthday Treats

While recognizing birthdays and school events are important to the students at Northlea we felt it was necessary to ensure that we are not having an excess or abundance of unsafe and unhealthy food products at Northlea.

Birthday treats are not permitted into your child's classroom. Parents or Caregivers are welcome to donate a book to the library or to your child's class to honour their birthday.

This Policy is applicable to students in **Kindergarten** through Grade 8.

Illness, Injury & Medications



To safeguard the health of others, we ask that any child who feels ill be kept at home. There is no in-school care for ill students. When students become ill, parents will be notified to make arrangements for their care. In the case of communicable diseases parents are requested to notify the Office as soon as possible so public health measures can be taken. In some cases, a letter will be sent home to the students based on TDSB and Toronto Public Health policies.

Minor injuries such as minor cuts and bruises will be treated at school. For more severe injuries, we take steps to ensure timely treatment, including ambulance services if needed. We notify parents and/or emergency contacts in the case of more serious injuries.

Parents of students who have ongoing medical conditions that require medications (i.e., EpiPen, inhalers, or prescription drugs) must notify the Office and the teacher to complete the appropriate forms for administration of medication during school hours as required by the Toronto District School Board.

Intergenerational Teaching Learning Community Program

The Intergenerational Teaching Learning Community Program (ITLC) is run by Community Care East York for the purpose of promoting interaction between students and seniors. It is run with the Grade 5 teachers and students every year. Students work with seniors on a particular craft or hobby once a week for a period of six weeks. The students can choose among a wide variety of activities that may change from year to year. During previous ITLC's, students have engaged in activities such as: photography, knitting, woodworking and teddy bear making. They complete their craft by the end of the six weeks. Grade five parents support this program by providing snacks for our senior volunteers.

Student Leadership Council

The Student Leadership Council (SLC) is an elected body of students who with the assistance of a staff advisor "advance the social and civic development of the school body, promote school spirit and pride and provide for an exchange of ideas among the faculty and students." Each Grade 4 to 8 class has one female and one male representative who will meet to discuss school issues, come up with solutions and organize events to benefit the school and community. The executive council of the SLC will oversee areas such as fundraising, athletics, communication and community.

Locker Policy

Students in grades 5 to 8 are typically assigned a locker at the beginning of the year for their books and belongings. They need to bring a combination lock at the beginning of September and give their locker number and combination to their teacher. Only one student is assigned to each locker. Students may not share lockers and they must only use the locker assigned to them. **Locker combinations should not be shared.** It is the student's responsibility to report a change of lock. Locks on unassigned lockers will be removed and the contents emptied. Lockers are school property and school officials have the right to search them when issues of school safety exist. Students are expected to keep their locker relatively clean, neat and free of graffiti. Locker cleanouts will be conducted several times during the year.

WINITS Program

The WINITS program is for the Grade 6, 7 and 8 students. It is in place to help motivate students to become involved in the extra-curricular programs at our school. Students receive a Winit point for their participation in any of the extra-curricular activities offered. Some examples of activities include: Student Leadership Council, Choir, Recycling Club, Office Helpers, Library Monitors, Me to We, Musical, and all Sports Teams. Students can strive to achieve four target levels:

- 18 points – small Northlea letter
- 30 points – large Northlea letter
- 45 points – Northlea plaque
- 70 points – Northlea trophy

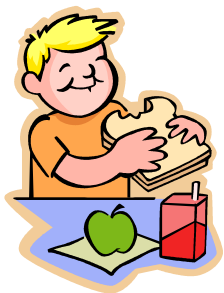
Points are counted and carried over from year-to-year starting in Grade 6. Students receive stickers for the Winit points they earn which are placed on a certificate they take home at the end of each year recognizing them for their participation in extra-curricular activities.

Northlea Community Child Care

The Northlea Community Child Care (NCCC) is located in the school. The child care office is located on the first floor at the northwest corner (closet entrance is through the playground in the northwest corner of the school). The childcare center is open from 7:30 a.m. to 6:00 p.m. They provide 120 spaces for children 2.5 – 12 years old who are enrolled or are eligible to be enrolled at Northlea. There is currently a waiting list to get into this program.

Northlea Child Care Centre also offers a summer camp annually for children in Grades 1 through 6. Registration begins in late March. For more information on the child care or summer program call 416-424-2890.

Lunch Program (1 - 8)



Given the physical size of our school and the number of students enrolled, Northlea encourages those families who are able to send their children home for lunch to please do so. The South Gym as a Lunch Room is not designed to be able to accommodate every child at the school, but Northlea will provide supervision to those children who stay at school for lunch. In addition, we also found that students tend to eat more at home. We observe many lunches thrown into the garbage at school and/or students eating only the desserts of their lunch. Poor eating habits make it difficult for students to concentrate fully on their school work.

Northlea provides supervision to those students who stay at school for lunch. Parents have the choice of having their children stay at school each and every day or just when participating in lunch activities such as choir, chess or other extra-curricular programs offered at lunchtime. All parents are expected to complete a Lunch Program Registration Form at the start of the year to indicate their preference. For safety reasons, a note must be handed in to your child's teacher if your child is to be absent from the lunch program on a day when they would normally be in attendance.

Our school has a Boomerang or Litter-less Lunch Program. **Please send your child's food and beverages in reusable, (i.e. thermos) or recyclable containers (i.e., plastic and/or aluminum bottles) wherever possible. Students will be asked to take all garbage items home with them.** During the lunch period, students are expected to show proper table manners and act in a manner that is safe and respectful towards other students and the supervisors. Students are expected to clear their own tables. If students are unable to follow the rules and routines of the lunchroom, parents will be notified and alternate arrangements will be made. If you wish to apply to a space in the lunchroom program, please complete and sign the form enclosed in this package.

There is a school cafeteria where children can purchase lunches, snacks and drinks. It is your responsibility to provide a lunch or money for your child(ren) to purchase one. The Office does not lend money to children to buy their lunches.

Students who do stay for lunch are expected to follow *Northlea's Code of Conduct as outlined on page 8*. Parents/caregivers are requested to review and explain these rules to their children. We need everyone's cooperation to make the lunch hour safe. Students who are unable to meet these expectations may be asked to make alternate arrangements over the lunch period.

Please review the following routines the children are expected to follow for lunchtime routines.

1. Wait for bell to ring at 11:35. Bring your lunch and your outdoor clothes (e.g., jackets, boots, hats, mitts, etc.) with you. Go to the bathroom and get a drink if necessary. You will not be permitted to go back to your cubby or locker during lunch.
2. The two designated lunch bin carrier students from each class (i.e., assigned by each Homeroom teacher) will get the class lunch bin and carry it to the North Gym for grades 4-8 and place it on the stage, and along the wall in front of Room 117 for grades 1-3 classes.
3. Sit at your designated lunch table, organized by class.
4. Line up on left side of Food Servery if you are in Grades 3-8 and right side if you are in Grades 1-2.
5. Do not wander around the lunchroom or visit students at other tables. Remain seated at your assigned table until your class is dismissed by the lunch room supervisors.
6. Talk quietly to your friends.

7. Bathroom visits should be done before coming to the lunchroom. However, if it is an emergency, ask for permission and a Bathroom pass from the lunchroom supervisor to go to the bathroom and take a friend with you. Upon your return let the supervisor know that you are back and return the Bathroom Pass.
8. Northlea is an EcoSchool. The EcoSchools Certification process helps Northlea take stock of our environmental practices, with an eye to setting goals for future improvement. Teachers help their students learn about litter and anti-litter behaviour by encouraging students to bring in waste-free lunches. Take all garbage home with you in your lunch bag (i.e., litter-less lunch) unless you ate at the Food Servery; in which case put the garbage in the appropriate garbage/recycling can.
9. Wait to be dismissed by class. Do not go upstairs or in any other hallway but the Northeast Hallway and exit from the North East doors.
10. Once outside, do not come inside unless it is a real emergency. All bathroom visits and drinks should have been taken prior to sitting down in the lunchroom. If you must come inside, ask for permission and a Bathroom Pass from the supervisor and take a friend. Tell the supervisor and return the Bathroom Pass when you return outside.
11. Students who stay for lunch must remain on school property for the entire lunch.
12. Students who normally stay for lunch must bring a note to their homeroom teacher if they will be absent on any day. Lunch arrangements with friends must be made prior to the day of the lunch.
13. Money will not be given to students who forget their lunch.
14. Students delivering attendance to the Office will pick up the lunch bin from the hallway or library area and deliver the bin back to their classroom.
15. Teachers or student monitors will make sure lunch bins are emptied at the end of the day.
16. All lunch bags must be labelled in permanent marker with the student's name.

Extra-Curricular Programs

A variety of lunch-time and after-school programs is offered for Grades 1 - 6 through selected suppliers, and covers a variety of art and sports-based programming. Programs are usually 8 weeks in length and run from 11:35 a.m. to 12:40 p.m. at lunch-time, or 3:30 p.m. to 4:45 p.m. after-school.

Full schedules are available for registration within the first two weeks of each term and course minimums do apply for certain courses to run. All schedules will be available on the Northlea website www.northleaschool.ca, together with details of the registration requirements and payment information. Popular courses from the last school year include; Drama, St. John's Babysitting, Sketching and Drawing, Basketball and Yoga.

Check out the school website and school e-mails for the release of new schedules at the start of each term.

Chess Club

Offered through the Home and School Association, the Northlea Chess Club is open to children from grades one to eight. Children at the lower levels will learn to play chess while the kids at higher levels improve on their strategies.

This program runs for 8 weeks each term on Wednesdays during lunch hour. Chess teachers, some of whom are competitive chess players, are brought in through the Chess & Math Association. Please see the Northlea website for dates and registration forms.

Northlea Home & School Council

Northlea parents are represented by one group of parent volunteers who fulfill 2 different roles; the Northlea School Council and the Northlea Home and School Association.

As mandated by the Ontario Ministry of Education, the advisory role of **School Councils** is to make **recommendations on any matter** to the administration and the school board. Together, with school administration, staff and community members, the Northlea School Council is a welcoming forum that strives to improve student achievement and school performance.

Northlea's **Home and School Association** is a member of the Ontario Federation of Home and School Associations, which is a registered charity independent of the Ministry or school boards. Its role is to foster **communication** between the school and the parent community and to **organize events and activities** to enrich the school community and provide additional funds for selected school-based projects. Maintaining an independent Home and School Association allows for autonomy over finances and how fundraising dollars are spent.

Evening meetings of the Home & School / Council are held regularly throughout the school year and are usually focussed on specific topics. Some of these for the 2014/2015 year included; Funding Allocation Proposal reviews and selection, understanding EQAO and the School Improvement Plan, and understanding the new School Model for 2015/16.

These meetings are open to all parents of Northlea students and are extremely informative and we welcome everybody's participation.

Home & School/Council Chairs for 2017/18:

President / School Council Chair
Past President/Chair Designate

Amy White and Arti Panday
Jennifer Adziovsky, Rachel Chernos Lin, Alexis De
Castro and Kara Kane

We are always looking for volunteers! If you are interested in helping contact the
Home and School Council homeandschool@northleaschool.ca

Fundraising

Northlea is committed to a variety of fundraising activities from which funds are used to support school and staff, to increase student success, and to enrich the educational experience of our children. Over the years, through the generosity of Northlea families and the community, many thousands of dollars have been raised and disbursed to the school, local charities and international projects.

2017/2018

A predetermined small percentage of funds raised is also committed to ongoing community projects and charities; People for Education and the Thorncliffe Breakfast Program. Money raised during the last few years has also funded School-based projects such as enhancements to the Kindergarten play area, resources for the Music department and the Phys Ed department, additional Graded Reading central resources, Smart Boards, Kobe Touch e-readers, and much more.

The largest fundraising event at Northlea is the **Family Fun Night** during the Winter term. It attracts both school and community families, who raise money through a range of varied activities like a silent auction, raffle baskets, class activities, business and personal sponsorships, and by selling tickets to many locally hosted social events called the Northlea Social Series.

In 2017/2018, there will be many new fundraising initiatives, but we will see the return of the parent favourites such as QSP, and Acorn Cards. See the school website www.northleaschool.ca for more information on these and more upcoming fundraising events and campaigns.

Home & School Council Volunteers

Northlea Elementary & Middle School is a truly unique place. Our students, staff and parents work together to the common goal of providing the very best environment for our children to thrive.

Parents are encouraged to be involved at Northlea. Teachers and class parents for each class will provide opportunities to volunteer with classroom activities. Parent volunteers are also greatly appreciated for school-wide events, and for other Home & School and School Council activities. This can be through a few 30 minute shifts at the larger events right through to Leadership roles within the Home & School / Council framework.

We have over 600 families at Northlea; be a family that gets involved – come to a meeting and learn more about the Home & School / Council and how you can help!

In the beginning of the year, important roles to be filled are those of Class Parent, Safe Arrival volunteer, Welcome Back Barbeque volunteers and morning (pre-school drop off) shifts on the returning Kiss and Ride program (PSP).

Full details of opportunities to get involved are available on the Northlea website at www.northleaschool.ca.

Volunteer interest can be expressed via homeandschool@northleaschool.ca.

Real generosity towards the future lies in giving all to the present.
Albert Camus(French Writer and Philosopher)

***The miracle is this-
the more we share,
the more we have.***

Thank you for taking the time to read this handbook. We hope it is helpful to you and your families as you begin your new year at Northlea.

***Northlea Administration
Northlea Home and School Council***

Important Events – At a Glance

Event	Date
Information Package forms due back	September 12
Welcome Back Barbeque Northlea's annual family BBQ from 5:30 until 7:30- Rain or shine. Join us for dinner, bouncy castles, face painting, Whimz animals and more.	September 28
Sheldon (Grade 6). Classes TBA in the Fall	Sept 11-13 Sept 13-15
Curriculum Night This event is for every parent. Come and learn more about the school curriculum and how it relates to your student(s)	October 3
Terry Fox Walk	September 28
Lice Check	September 15
First Home & School / School Council Meeting	TBA
Magazine (QSP) Subscription Campaign	TBA
School Photos	October 6
Winter Concert	December 13
Family Fun Night	TBA
Acorn Card Fundraiser	TBA
Graduation Photos	February 23
Grade 8 Graduation	June 26

2017 - 2018 Dates to Remember

P.A. DAYS & HOLIDAYS	DATE
Labour Day	September 4, 2017
Board-wide PA Day	October 6, 2017
Thanksgiving	October 9, 2017

2017/2018

Board-wide PA Day	November 17, 2017
Board-wide PA Day	December 1, 2017
Last day of School	December 22, 2017
Christmas Break	December 25, 2017 to January 5, 2018
School resumes	January 8, 2018
Elementary PA Day	January 19, 2018
Board-wide PA Day	February 16, 2018
Family Day	February 19, 2018
March Break	March 12 to 16, 2018
Good Friday	March 30, 2018
Easter Monday	April 2, 2018
Victoria Day	May 21, 2018
Elementary PA Day	June 8, 2018
Board-wide PA Day	June 29, 2018





TORONTO DISTRICT SCHOOL BOARD

Northlea E.M.S.

2017 - 2018

H	Statutory Holiday
B	Board Break
PA	PA Day

September						
S	M	T	W	Th	F	S
					1	2
3	4	5	6	7	8	9
10	11	12	13	14	15	16
17	18	19	20	21	22	23
24	25	26	27	28	29	30
Respect						

October						
S	M	T	W	Th	F	S
1	2	3	4	5	6	7
8	9	10	11	12	13	14
15	16	17	18	19	20	21
22	23	24	25	26	27	28
29	30	31				
Responsibility						

November						
S	M	T	W	Th	F	S
		1	2	3	4	
5	6	7	8	9	10	11
12	13	14	15	16	17	18
19	20	21	22	23	24	25
26	27	28	29	30		
Equality						

December						
S	M	T	W	Th	F	S
					1	2
3	4	5	6	7	8	9
10	11	12	13	14	15	16
17	18	19	20	21	22	23
24	25	26	27	28	29	30
31						
Kindness & Caring						

January						
S	M	T	W	Th	F	S
	1	2	3	4	5	6
7	8	9	10	11	12	13
14	15	16	17	18	19	20
21	22	23	24	25	26	27
28	29	30	31			
Teamwork						

February						
S	M	T	W	Th	F	S
				1	2	3
4	5	6	7	8	9	10
11	12	13	14	15	16	17
18	19	20	21	22	23	24
25	26	27	28			
Fairness						

March						
S	M	T	W	Th	F	S
				1	2	3
4	5	6	7	8	9	10
11	12	13	14	15	16	17
18	19	20	21	22	23	24
25	26	27	28	29	30	31
Honesty						

April						
S	M	T	W	Th	F	S
1	2	3	4	5	6	7
8	9	10	11	12	13	14
15	16	17	18	19	20	21
22	23	24	25	26	27	28
29	30					
Co-operation						

May						
S	M	T	W	Th	F	S
		1	2	3	4	5
6	7	8	9	10	11	12
13	14	15	16	17	18	19
20	21	22	23	24	25	26
27	28	29	30	31		
Integrity						

June						
S	M	T	W	Th	F	S
					1	2
3	4	5	6	7	8	9
10	11	12	13	14	15	16
17	18	19	20	21	22	23
24	25	26	27	28	29	30
Perseverance						

Professional Activity Days:

Friday, October 6, 2017
 Friday, November 17, 2017
 Friday, December 1, 2017
 Friday, January 19, 2018
 Friday, February 16, 2018
 Friday, June 8, 2018
 Friday, June 29, 2018

First Day of School:

Tuesday, September 5, 2017
 Last day of school for students:
 June 28, 2018

Dates to Remember:

Labour Day: September 4, 2017
 Thanksgiving: October 9, 2017
 Christmas Break: December 25, 2017 to
 January 5, 2018 inclusive (last day of school
 December 22; school resumes January 8)
 Provincial Family Day: February 19, 2018
 Mid-Winter Break: March 12 to 16, 2018
 Good Friday: March 30, 2018
 Easter Monday: April 2, 2018
 Victoria Day: May 21, 2018

Total Instructional Days: 188

