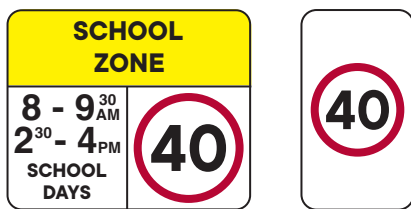


Parking and safety around schools

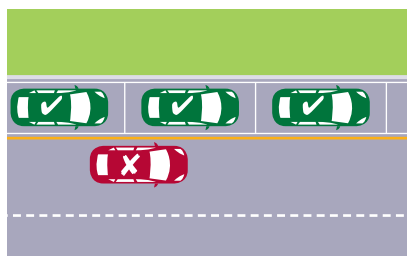


Speed



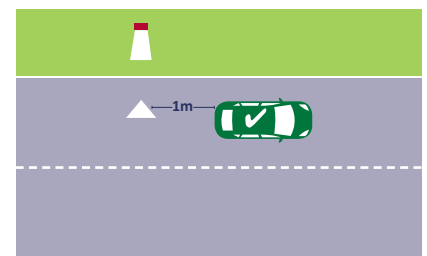
Look out for the reduced speed limit around schools and slow down to improve safety.

Yellow edge line



A driver must not stop on the side of the road marked with a yellow edge line.

Fire hydrants



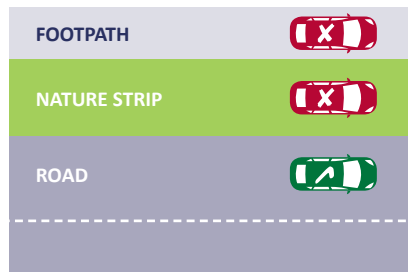
1 Metre clearance is required for fire hydrants, fire hydrant indicators or fire plug indicators.

School crossings



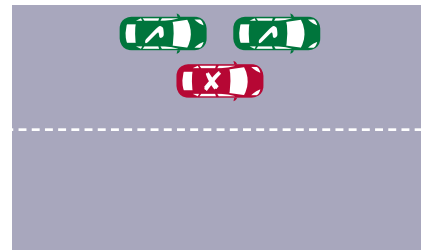
- Look out for flags and crossing supervisors.
- You must stop for anyone waiting to cross, or who has started crossing
- Please remain stopped until the crossing is clear.

No crossing on nature strips/footpaths



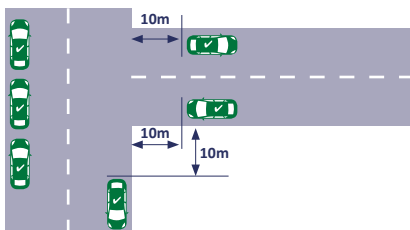
Parking is illegal on nature strips and footpaths.

Double parking



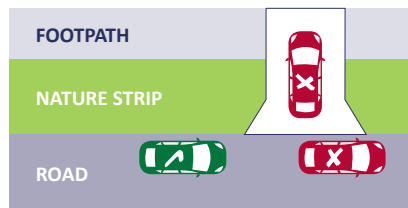
It is illegal to double park at anytime. This affects the flow of traffic.

Within 10 metres of an intersection



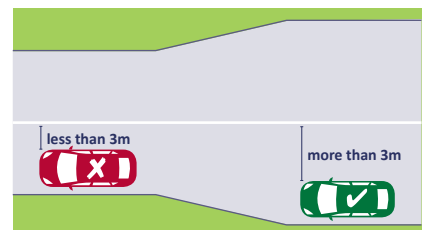
A driver must not stop with any part of their vehicle within 10 metres of an intersection unless signed otherwise.

Stopping across driveways



It is illegal to stop/park across a driveway unless you stay in the car and are there for no more than two minutes and move immediately if required to do so to allow entry or exit by the owner/occupier.

3 Metre gap from white line



At least 3 metres must be left between your vehicle and the centre dividing line to allow other vehicles to pass safely and not obstruct traffic.

Parking at schools can be challenging due to limited spaces and heavy traffic, but doing it correctly can save lives.

Children are unpredictable and often move quickly, so as adults, we need to ensure their safety. By parking correctly we can do that.



Follow designated parking areas

Always park in designated areas and follow the school's parking regulations.



Drop-off and pick-up zones

Use designated drop-off and pick-up zones if available. These areas are designed for quick stops and minimise the time children spend in traffic areas.



Avoid double parking

Double parking can obstruct visibility and create hazards. Park only in designated spaces to allow for smooth traffic flow and prevent accidents.



Mind crosswalks and pedestrian paths

Avoid parking in or near crosswalks and pedestrian paths. Ensure that children have a clear path to walk safely to and from school without having to navigate through parked cars. It is illegal to park within 20m before a crossing and within 10m after a crossing.



Stay within marked lines

When parking, make sure to stay within the marked lines to maximize space efficiency and prevent congestion. This also ensures that emergency vehicles can pass through easily if needed.



Turn off engines

If you're waiting in your car, especially in drop-off or pick-up areas, turn off your engine. This reduces air pollution and creates a safer environment for children.



Watch for school zone signs

Obey speed limits and watch for school zone signs. These areas typically have reduced speed limits during certain hours to enhance safety.



Be mindful of blind spots

Before pulling into or out of a parking space, be mindful of blind spots. Check mirrors and surroundings to ensure no children are in the vicinity.



Practice patience

Traffic around schools can be hectic during drop-off and pick-up times. Practice patience, follow traffic rules, and be courteous to other drivers to create a safer environment for everyone.



Encourage walking or carpooling

If possible, encourage walking or carpooling to reduce the number of vehicles around the school. This can alleviate traffic congestion and contribute to a safer environment.

By following these guidelines, adults can contribute to creating a safer and more organised parking environment around schools, ultimately ensuring the well-being of children.