



# studyworkgrow

LINKING LEARNING WITH LIFE

## PATHWAYS TO TEACHING

[ TWO THOUSAND AND TWENTY-TWO ]

[studyworkgrow.com.au](http://studyworkgrow.com.au)



## in this guide...

terms you need to know  
about teaching as a career  
pathways to becoming a teacher  
your study options  
understanding registration  
creating a plan b

A guide to a career in Teaching explained - from university programs offered in Australia for students commencing study in 2023, to the steps you'll need to take in order to teach.

Created by Study Work Grow Pty Ltd in 2022.

Version 1

The programs in this guide may be subject to change at any time. In our experience, programs may change at short notice, and you should always check directly with the provider before applying. We have verified the information in this guide, but in some cases the information may differ from that provided on third party websites or printed material.



## terms you need to know

Teaching has some specific words and terms that you'll need to learn if you want to work in the field.

**Teacher** - a professional with a recognised qualification in education.

**Teacher's Aide** - helps classroom teachers with non-teaching duties such as preparing resources and teaching materials, and performing general administrative classroom tasks.

**Early Childhood Educator** - ECE's work with young children between two and five years of age to promote their learning and help them to develop key skills for the future.

**Pedagogy** - the style and approach to teaching reflected in the theories and practices used.

**Cognitive** - the mental processes involved in learning including thinking, knowing, remembering, judging, and problem-solving.

**Duty of care** - teachers must do everything reasonably practicable to ensure students are not exposed to risks to their health or safety / kept safe whilst at school.

This is just a few, so if you come across any other terms you want to remember, note them down here:

---

---

---

---

---

---

---

---

---

---

---

## levels of teaching

### EARLY CHILDHOOD

Early Childhood Educators are responsible for teaching children under the age of 5. They provide foundation learning, such as basic literacy and numeracy skills, as well as engaging children in a variety of fun and educational activities.

### PRIMARY

Primary school teachers work with children from Prep to Year 6. They will continue to build on skills taught in early childhood, as well as beginning to teach children more complex concepts. As a primary teacher, you'll be expected to teach across a variety of subjects, as well as create assessments, and grade students' work.

### SECONDARY

Secondary school teachers work with children from Years 7 to 12. At this level, students will be learning advanced concepts, and gain skills and knowledge that will prepare them for life beyond school. You will create and mark assessments, and may choose to specialise in a specific subject area (such as science, languages, business, or more).

### ADULT EDUCATION

Adult Educators teach people after they've finished school. This includes VET and University lecturers and teachers. At this level, you will be teaching specialised concepts and skills to students to prepare them for work in a specific career.

## where teachers work

Before you delve any deeper into the world of Teaching, let's start by looking at where teachers and educators work. This is important because if you become a teacher then you'll be working like this; and if you don't think you would enjoy this kind of work environment then you may need to rethink becoming a teacher



Jobs available across Australia



Limited opportunity to work from home or online



Rural and remote teachers in high demand

## TEACHERS ARE NEEDED ACROSS AUSTRALIA

Teachers are found all over Australia in a range of environments, including schools, kindergartens, early childhood centres, universities, vocational training providers; as well as in public organisations and private businesses. Generally, there is high demand for teachers from rural and regional locations - meaning there's not only good pay available, but opportunities to experience living in other parts of Australia.

## VARIETY

As a Teacher you could choose to work with any age group that appeals to you, from babies right through to adults. And you can choose to specialise in a field that you love e.g. dancing, music, art, science, languages etc. You could be working in a mainstream school (public or private), alternative school, working in facilities with students with special needs, children's hospital classrooms, or you could be working in universities, registered training organisations, prisons, and many other institutions.

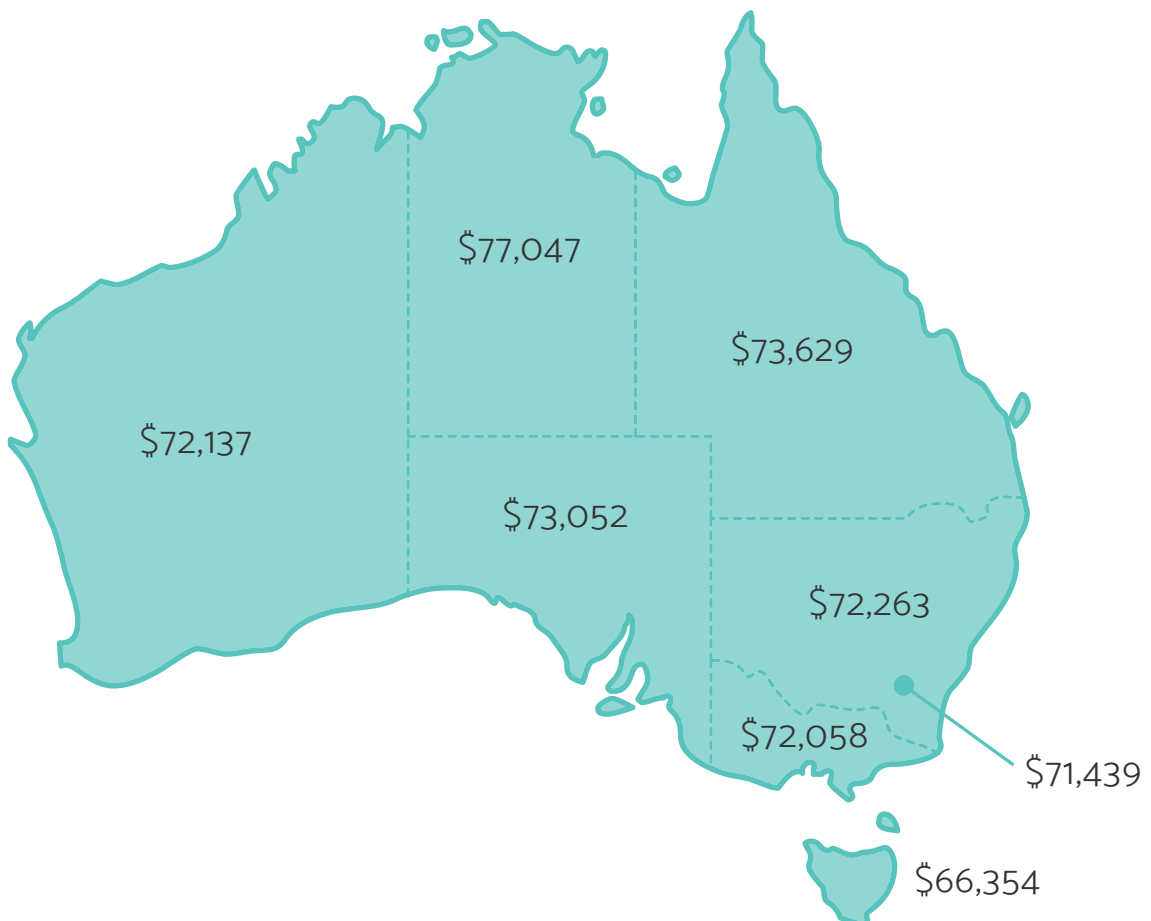
## WORK EXPERIENCE

There are limited opportunities to work from home, although there may be more opportunities post-COVID. There are jobs where you could be working remotely from your students (e.g. School of the Air). Otherwise you could be working in a classroom, a lecture theatre, in offices, or even outside in nature. Teaching environments can be quite varied.

## what teachers earn

Teachers usually earn more than the national average income. Early Childhood Teachers tend to earn less than Primary and Secondary teachers, who earn less than Special Education teachers and Tertiary Educators.

Teachers earn one of the highest starting salaries of any occupation, and teachers in the Northern Territory have the highest average starting salary:

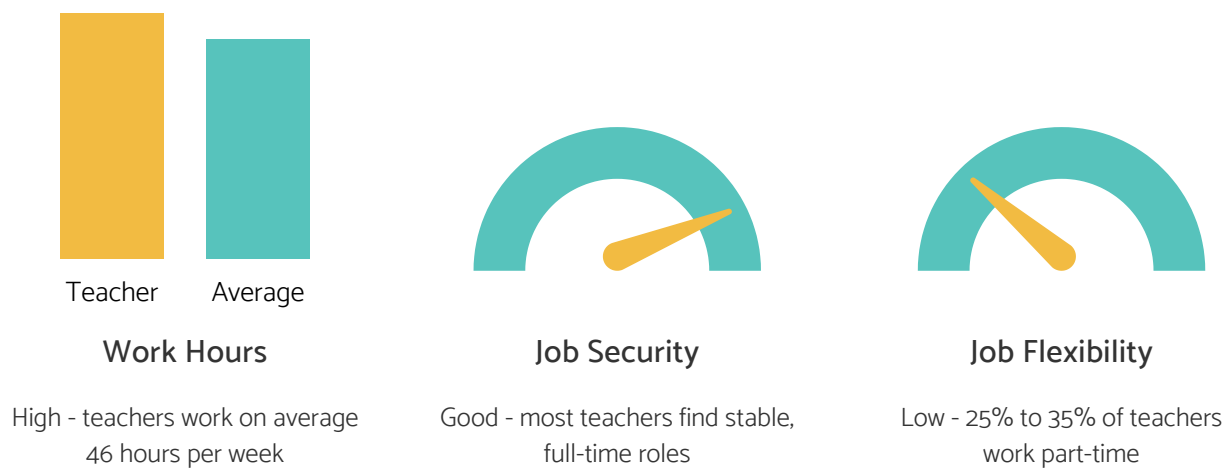


Does this meet your earning expectations?

- Yes, this salary looks good to me
- No, I'd like to earn more

## work-life balance

Have you thought about what life will be like if/when you become a Teacher? Your career will have an impact on your lifestyle. Are you willing to change your lifestyle if you need to?



Teachers work during school hours when students are present and use nights and weekends to prepare lessons, mark papers, write exams and reports. School holidays sound amazing but you'll probably have work to do then too, and you may not be able to take extra days outside of those scheduled breaks.

Teachers generally have good job security and can expect to spend longer than average at the one workplace. You could also transfer within your educational system to another school, and potentially progress within your school to roles like Head of Department.

Even with the recent changes to online learning, most teachers will still need to physically come in to school, so you may not be able to find flexibility with your work hours, or work you can do from home.

Do you think you could handle the impact on your lifestyle?

- Yes, it sounds like it would suit me
- No, I'm not so sure this is sounding like me

## key tasks

Teachers are responsible for supporting the learning needs of their students, which means they need to complete some tasks on a regular basis, but other tasks only come around every now and again.

Every day is different as a teacher because there are so many variables; your students will have different needs depending on who you're teaching and what they're learning. You may have additional tasks to take care of, and your year will probably revolve around things like assessment deadlines and term dates.

Teaching is a service-based profession, which means that you will probably not be working on long, complex projects too often. This also means that you'll need to deal with people on a regular basis; including your students, their parents, colleagues, and other people in your school community.



### Automation Risk

There is a very low risk of your job being automated



### Service Tasks

You'll provide a similar service each day



### People Facing

The majority of your work puts you in contact with other people

You'll also be responsible for other tasks, like planning lessons, writing reports, supporting the mental health needs of your students, and informing parents about what you are teaching.

You will most likely need to regularly liaise with other teachers and school leadership staff, and ensure you meet all the mandatory ongoing registration requirements.

What do you think of the key tasks of this career pathway?

- I'm excited to get started
- I'm not so sure about these tasks and responsibilities



## skills and strengths

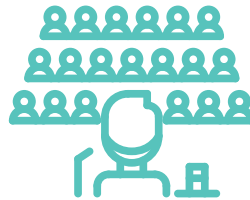
Teachers need to be resilient, resourceful, and positive, with great oral and written communication skills.

You don't need to have all of these attributes right now, but it would be good if you meet some of them and are willing to work towards the others.



Active indoor work

You'll often be standing, walking and talking throughout your day



Public speaking

Expect to speak in front of groups and to lead people



Positive attitude

Bring out the best in your students

Circle the attributes you feel you have:

Patient	Organised
Confident	Creative
Caring	Good sense of humour
Excellent communicator	High energy
Persistent	Adaptable

How many did you circle?

0 to 3 - you and teaching may not be a good fit

4 to 6 - there could be potential

7 and up - sounds like you could make a great teacher

## thoughts so far

Do you think you could become a teacher? It's an important job, and you'll be part of shaping the lives of young people, which means you'll need to commit to the role. Next, we're going to look at pathways to becoming a teacher, but before we go on ask yourself these three questions:

What are you most looking forward to if you become a teacher?

---

---

---

---

---

What do you think you will struggle with most as a teacher?

---

---

---

---

---

Do you think the lifestyle, pay, and conditions would suit you?

---

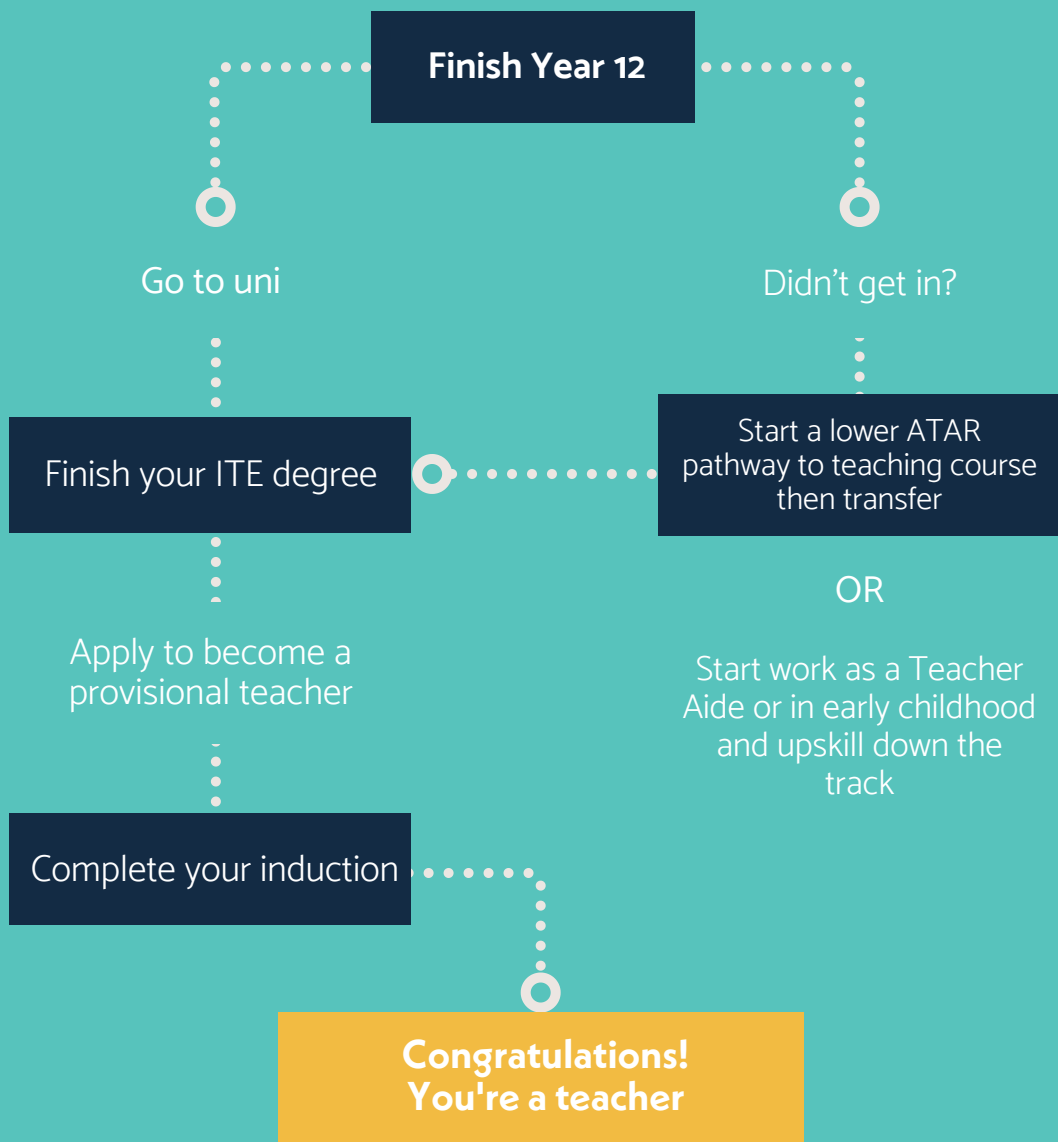
---

---

---

---

# pathways to teaching



## your study options

Once you leave school, you have a few options:

The first and possibly most competitive option is to commence one of the Initial Teacher Education (ITE) Undergraduate Bachelor degrees once you finish school. They usually take 4 years to complete.

**Double up:** possibly consider a double or combined degree. You could graduate with two degrees in 4-5 years, with a broader range of knowledge and skills.

This could make you an attractive candidate for employment, as well as opening up more career options.

The second pathway - complete an undergraduate degree in another field, then meet the requirements and apply for admission to a postgraduate Teaching degree.

You'll need to pass the LANTITE test with ACER (Australian Council for Education Research) and possibly complete other tests or meet specified entry requirements. Most programs have strict prerequisites and performance standards.

An added benefit of this pathway is that the range of teaching careers is huge, and you may find something else you prefer along the way. Education Field Officer, Curriculum Designer, or Training and Development Professional are just some of the careers you could choose to pursue.

### WHICH PATHWAY ARE YOU LEANING TOWARDS?

**1**

If you're thinking about going straight into a teaching degree after school, take a look at the programs offered and find one that fits your needs

**2**

If you're not sure about getting into teaching straight out of school or if teaching is the best career for you, you could find another degree to study, then apply for a post-graduate entry pathway

## initial teacher education (ITE)

If you've reached this point in the Handbook and think teaching is a good option for you, congratulations.

As you've learnt, teaching requires a unique set of skills, and your ability to lead and empathise with your students will be as important (if not more so) than your academic skills.

For that reason, many of the Initial Teacher Education (ITE) programs have entry requirements which test your people skills and ability to teach.

These ITE programs are accredited by your state or territory Teacher Regulatory Authority. You may know them as a Bachelor of Education or Bachelor of Teaching.

Many of these programs are also available as double degrees.

Many of the ITE programs focus on one of the first three stages; Early Childhood, Primary or Secondary. Some combine two or more stages, or allow you to combine your degree with another program.

Generally these programs take four (4) years to complete.

In addition to academic criteria, you may be asked to provide a statement and/or complete a test before you can gain entry.

You may also have to attend an interview as part of the application process.

As part of the teaching standards laid out by AITSL you'll also have to complete the National Literacy and Numeracy Test for Initial Teacher Education Students (LANTITE).

Some universities may require you to pass this test as part of the application process; most of them however ask you to sit the test (and gain a satisfactory or higher result) once you've started the course, usually before your first work placement.

From 2023 you'll have the option to sit the test before you start your studies instead of waiting until the end of your degree.



## your university degree

In Australia, the teaching degree you complete must be accredited by your State or Territory Teaching Standards Board for you to be eligible to register as a teacher once you finish.

The Australian Institute for Teaching and School Leadership (AITSL) create the framework for the standards in each state. You can check their site for updated information and check for accredited courses.

Australian Professional Standards for Teachers include:

- **Professional Knowledge**  
Know how students learn  
Know the curriculum content and how to teach it
- **Professional Practice**  
Be able to plan and implement effective teaching and learning  
Create and maintain a safe and supportive learning environment  
Assess students, provide feedback, and report on student learning
- **Professional Engagement**  
Engage in professional learning / professional development  
Engage professionally with colleagues, parents, carers, and the community

Before you commit to any course you should always double check your eligibility, whether the course is accredited and all the necessary knowledge listed above are covered in the course and your practical placements.

Studying teaching at university can be intense, but many students find it highly rewarding. You'll be part of a community of like-minded teaching students and may even feel like you speak your own language at times (as teaching has so many unique terms like 'pedagogy' and 'rubric').

Even if you don't end up working as a teacher, your qualification will be highly regarded by employers in a range of different industries.

You can search for all currently accredited ITE programs in Australia on [AITSL's website here](#).

[search for courses](#)

## undergraduate course options

University	Location	Area	Min ATAR	Years (Fulltime)	Statement / Test	Interview
ACU	NSW, ACT, VIC, QLD	Early Childhood, Primary, Secondary	63	4	✓	✗
Alphacrucius College	NSW, QLD, VIC, WA, TAS & SA	Early Childhood, Primary, Secondary	65	4	✗	✓
Avondale University	NSW	Early Childhood, Primary, Secondary	63	4	✓	✗
CDU	NT	Early Childhood, Primary, Secondary	60	4	✓	✗
CSU	NSW	Early Childhood, Primary, Secondary	65	4	✓	✗
CQU	QLD	Early Childhood, Primary, Secondary	62	4	✓	✗
Curtin	WA	Early Childhood, Primary, Secondary	70	4	✓	✗
Deakin	VIC	Early Childhood, Primary, Secondary	70	4	✓	✗

## undergraduate course options

University	Location	Area	Min ATAR	Years (Fulltime)	Statement / Test	Interview
ECU	WA	Early Childhood, Primary, Secondary	70	4	✓	✗
Federation University	VIC	Early Childhood, Primary, Secondary	70	4	✓	✗
Flinders	SA	Early Childhood, Primary, Secondary	70	4	✓	✗
Griffith	QLD	Early Childhood, Primary, Secondary	70	3.5	✓	✗
JCU	QLD	Early Childhood, Primary, Secondary	62	4	✓	✗
La Trobe	VIC	Early Childhood, Primary, Secondary	TBC	4	✓	✗
Macquarie	NSW	Early Childhood, Primary, Secondary	75	4	✓	✗
Melbourne Polytechnic	VIC	Early Childhood, Primary	70	4	✗	✓

## undergraduate course options

University	Location	Area	Min ATAR	Years (Fulltime)	Statement / Test	Interview
Monash	VIC	Early Childhood, Primary, Secondary	70	4	✓	✗
Murdoch	WA	Early Childhood, Primary, Secondary	70	4	✓	✗
QUT	QLD	Early Childhood, Primary, Secondary	72	4	✓	✗
RMIT	VIC	Early Childhood, Primary	70	4	✓	✗
SCU	NSW, QLD	Early Childhood, Primary, Secondary	70	4	✓	✗
Swinburne	VIC	Early Childhood, Primary, Secondary	70	4	✓	✗
Tabor	SA	Primary, Secondary	70	4	✓	✗
University of Adelaide	SA	Secondary	80	4	✓	✗

## undergraduate course options

University	Location	Area	Min ATAR	Years (Fulltime)	Statement / Test	Interview
UC	ACT	Early Childhood, Primary, Secondary	60	4	✓	✗
UNE	NSW	Early Childhood, Primary, Secondary	77.1	4	✓	✗
University of Newcastle	NSW	Early Childhood, Primary, Secondary	65	4	✓	✗
University of Notre Dame	NSW, WA	Early Childhood, Primary, Secondary	80	4	✓	✗
UQ	QLD	Primary, Secondary	76	4	✓	✗
UniSA	SA	Early Childhood, Primary	73	4	✓	✗
UniSC	QLD	Early Childhood, Primary, Secondary	68	4	✓	✗
UniSQ	QLD	Early Childhood, Primary, Secondary	66	4	✓	✗



## undergraduate course options

University	Location	Area	Min ATAR	Years (Fulltime)	Statement / Test	Interview
University of Sydney	NSW	Early Childhood, Primary, Secondary	85	4	✓	✗
UTAS	TAS	Primary, Secondary	71.55	4	✓	✗
UTS	NSW	Secondary	77	4	✓	✗
UWA	WA	Secondary	88	4	✓	✗
UOW	NSW	Early Childhood, Primary, Secondary	75	4	✗	✓
VU	VIC	Early Childhood, Primary, Secondary	72.3	4	✓	✗
WSU	NSW	Early Childhood, Primary	82	4	✓	✗

## understanding registration

Once you've completed an accredited ITE program, you'll have learnt all the necessary skills and knowledge that you'll need to teach to the approved Australian standard. You'll even have completed practical workplace experience and hopefully feel ready to take the leap into a classroom of your own.

Reaching this point may have been challenging and will have taken you a minimum of 4 years to achieve. If you're still determined to take your passion to teach to the next level, you'll need to register in the state or territory where you'll be working.

Registration is important to ensure that a high standard of preparation, conduct and practice is upheld in the profession. It's important to ensure standards of teaching are being met and in the best interests and welfare of students.

Registration is granted and managed by teacher regulatory authorities in each state and territory. You can usually apply while you're in your final semester of your degree.

As a new graduate you'll likely be granted a **provisional registration**. Once you've reached the required amount of teaching days and can show evidence of your proficiency, you can apply for **full registration**. Your evidence will be assessed before your registration is granted and you'll also need a recommendation from the principal (or equivalent) where you are teaching.

As part of your registration (provisional or full) you may be required to obtain:

- Proof of your qualification and LANTITE results
- References
- A national criminal history records check
- Relevant working with children certificate in your state

Once you've reached the milestone of becoming a registered teacher, you should celebrate.

You should also know that's not the end of the story. You'll also need to apply to renew your registration if you want to keep teaching.

The maximum time your registration can last for is 5 years, but in some states you may have to renew your license more frequently.

Each time you apply for renewal you may need to show an updated criminal check, that you've maintained your knowledge and practice of teaching standards, and that you've completed the required amount of continued professional development (CPD).

Employers may have additional requirements such as:

- First Aid Certificate
- Anaphylaxis Training

## registration requirements

State	Registering Authority	ITE Qualification	Days Teaching	Working With Children	Police Check	Mandatory Notification Training (MNT)	Fees
ACT	Teacher Quality Institute	✓	180	✓	✗	✗	✓
NSW	NSW Education Standards Authority	✓	160	✓	✗	✗	✓
NT	Teacher Registration Board	✓	180	✓	✓	✗	✓
QLD	Queensland College of Teachers	✓	200	✓	✓	✗	✓
SA	Teachers Registration Board	✓	200	✓	✓	✓	✓
TAS	Teachers Registration Board	✓	185	✓	✓	✗	✓
VIC	Victorian Institute of Teaching	✓	80	✓	✓	✗	✓
WA	Teacher Registration Board	✓	100	✓	✓	✗	✓

\*Guidelines only for apply for full registration - employers may have additional requirements

## other pathways in teaching

Teaching is a big commitment, so if you're not sure about becoming a teacher, then it's probably worth researching other options and creating a 'Plan B'.

Luckily, many Graduate Teaching Programs (i.e. ones you can only get into once you already have a degree) don't put limits on the type of degree you can have. Which means that you could apply with a Bachelor of Arts, Engineering, Accounting, or IT.

Your Plan B could also include options for courses or pathways to take if you don't get an offer for your first preference.

You can still achieve your goal of a career in teaching if you miss out in the first round of offers, so don't give up.

Research alternative pathways with each uni, and look around at all the degrees on offer. They'll have different eligibility criteria, e.g. some have lower ATAR requirements.

You could apply for any other undergraduate degree in an area that interests you, then apply for a postgraduate teaching program once you've graduated.

If you're not sure about uni, how about a vocational qualification or a traineeship? It will provide you with foundation knowledge and hands-on experience.

Some universities will even take into account your vocational qualifications, work and life experience when you apply for teaching programs with them.

### DO YOU HAVE A PLAN B?

It could be wise for your Plan B to include career options other than 'teacher', in case you don't get into your dream course, or you change your mind during your studies. Having a solid backup career option with good job prospects, even if you never get into teaching, is a very sensible move.

Write down some Plan B (or C, or D...) ideas here:

---

---

---

---

---

## how else can you use a teaching degree?

Just as with any career, there are lots of reasons why you might change your mind about Teaching once you've finished your degree or even after a few years in the job.

If a lifetime of Teaching isn't for you, that's OK. Your qualifications, skills, and experience could open the doors to careers in lots of other areas.

If you love Education but you're just not passionate about Teaching, then you could stay in the field and consider other roles such as training or mentoring.

Depending on the work experience you've gained, you could move into leadership positions.

Or you could even become a one-on-one tutor, set up your own business and work for yourself from home or workspace.

There are also lots of jobs within Education that you've probably never even thought about - from curriculum writing, publishing, and editing, to administration, marketing and more.

With a teaching degree in hand and experience working with young people, you could be well placed to move into counselling, community, or youth work roles too.

For a completely fresh start, your skills could provide a great basis to work in a host of other industries such as: business, entertainment, not for profit organisations, Government roles, media and more.

You may need to undertake some additional training or registration, but your qualifications could be a good head start and help you to fast track your way there.

### SKILLS STRENGTHS

What transferrable skills do you think you'd gain from a Teaching degree and work experience as a Teacher? They'll be useful in other careers and lots of other industries other than Education. Have a think and write some of the core skills below, then research other jobs where they'd be useful.

---

---

---

---





## study work grow

Since 2006, we've been committed to supporting Australian schools with quality, researched information that can help make the transition to post-school life more successful.

Finishing school is a big step, and it can be stressful thinking about what's next. We want to help make the transition from school to further study, work, or whatever you wish to do as smooth as possible.

Remember, you can always ask your family, friends, teachers, and other support people in your life for advice and guidance as well. We wish all students the best of luck with their planning and hope that you have amazing experiences that enrich your lives, no matter what you do.

CONNECTING YOUNG PEOPLE  
WITH FUTURES THEY LOVE



**studyworkgrow**

p. + 61 7 4039 3862

e. [info@studyworkgrow.com.au](mailto:info@studyworkgrow.com.au)



[studyworkgrow.com.au](http://studyworkgrow.com.au)