



Prep 2025 Parent Information Evening



Acknowledgement of Country



We acknowledge and pay respects to the people of the Wurundjeri Willum Clan of the Kulin Nation whose land we come together on today to learn, share and grow.



*"My country", 2009
by Kuruwarringathi Bijarrb Paula Paul*

Prayer



Lord Jesus Christ,

We come before You with hearts full of hope as we begin this new school year.

May we be guided by the example of St. Mary MacKillop, who inspired us to "be calm and full of hope".

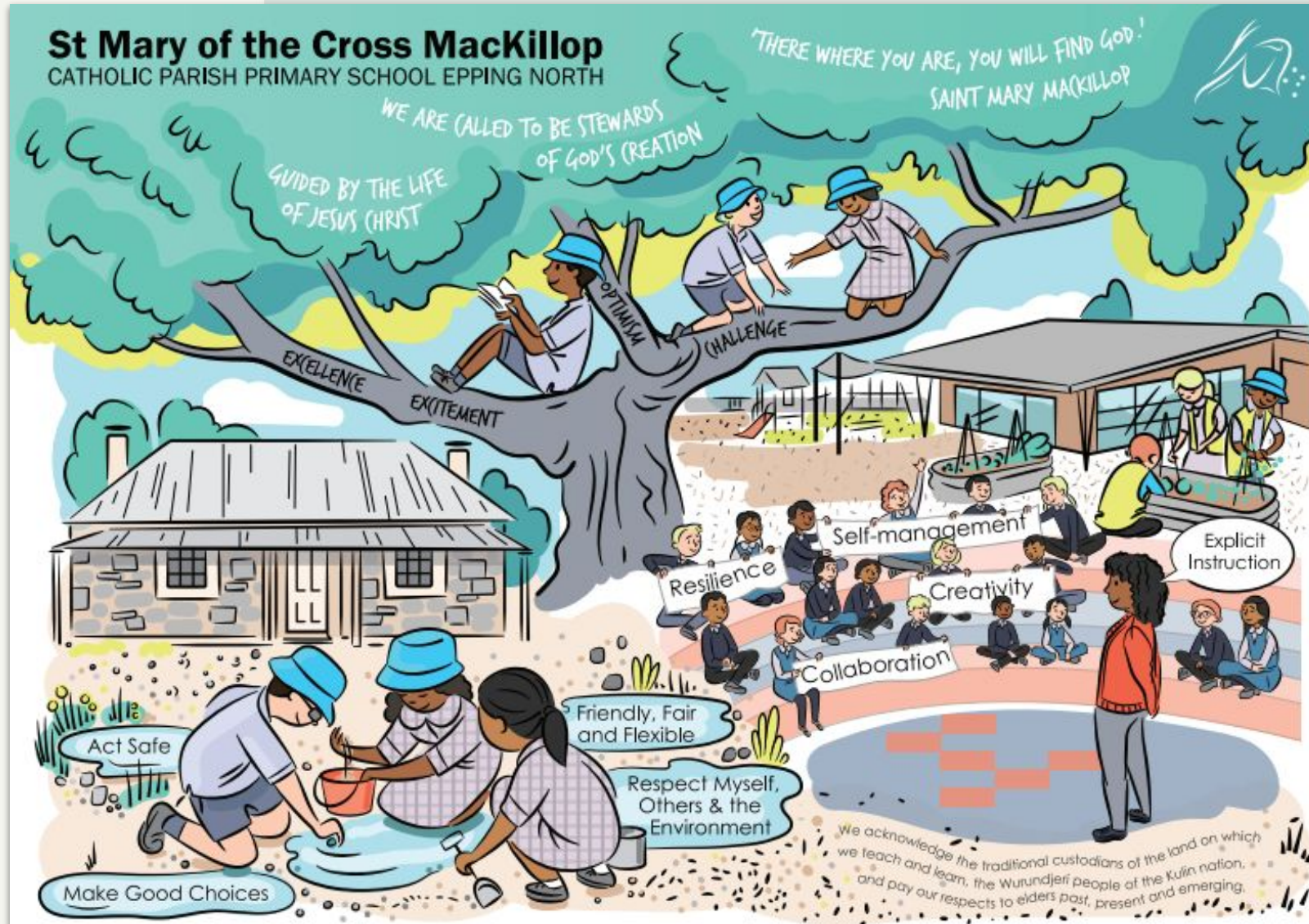
In this year of Jubilee 2025, renew our faith and strengthen our spirits,

that we may face each challenge with peace and trust in Your love.

Guide us to be a light of hope to one another, and help us build a future filled with Your grace and peace.

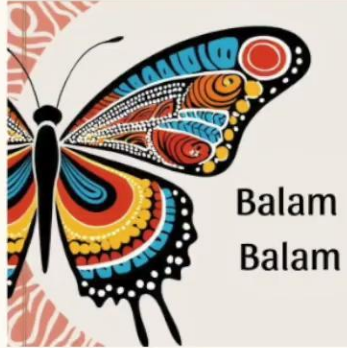
Amen.

Learning at SMCM



"We must prepare children for the path, instead of the path for children."

Our First 12 Days of Learning



Foundation 2025



Daily Routine



8:45am	Students enter learning studios via external doors, unpack, prayer and mark the roll.
8.55am	1st Learning session
9:55am	2nd Learning session (including Brain Food: <i>a small cut up fruit snack</i>)
10:55am	<i>First Break - outdoor play</i>
11:35am	Supervised Eating Time
11:45am	3rd Learning session
12:45pm	4th Learning session
1:45pm	<i>Second break</i>
2:25pm	5th learning session
3:25pm	Dismissal from homegroup



Timetable Reminders

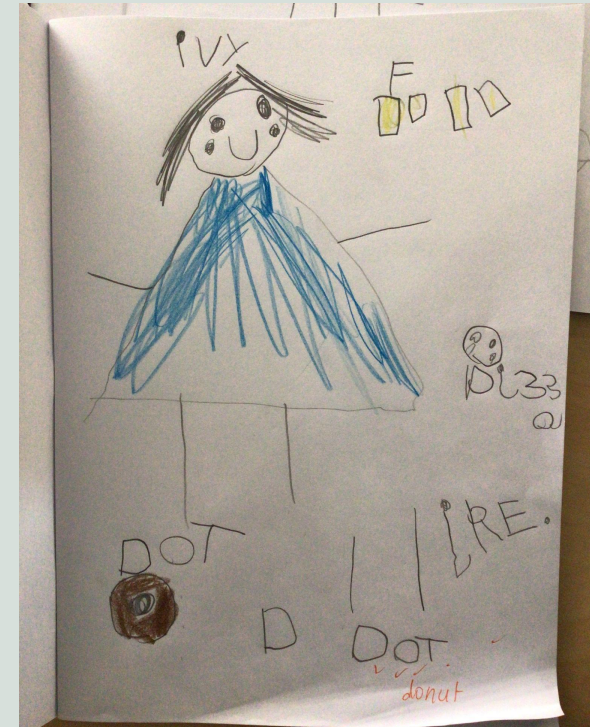
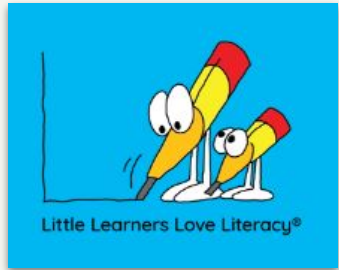
Foundation Weekly Timetable



Term One 2025

Monday	Tuesday	Wednesday	Thursday	Friday
	Sport Uniform 			Sport Uniform 
	Library 			Specialists 
Lunch Orders 	Specialists 	Lunch Orders 		Lunch Orders 
			Afternoon Gathering 	

English



P.A.I.R Home Reading



DOUBLE PAGE SPREAD *sample*

Literal questions

Can you find the map?
How many legs are going?
Who is rolling up the sleeping bag?
What are Nipper and Pierre really doing?

What could a 'high paw' be?
How do you know the dogs are happy?
What sort of sleep might it be (countdown)?
How do you know there will be a table or a computer (yet)?

Sniff, Spike, Nipper and Pierre are getting ready to go camping. They are all very excited.

Sniff is folding the tent.
Spike is rolling up sleeping bags.
Nipper and Pierre are checking flashlights.

'We are leaving in the morning!' they chorus.
Then they give each other a 'high paw'.

2nd-RR: See how many items your child can name. Give them time. Prompt if necessary.
3rd-RR: Chat about a camping adventure you, or your child, may have enjoyed in the past.
4th-RR: Encourage a discussion around planning a camping trip to the beach.
(Note: Consider re-reading the text if your child needs help to discuss the questions.)

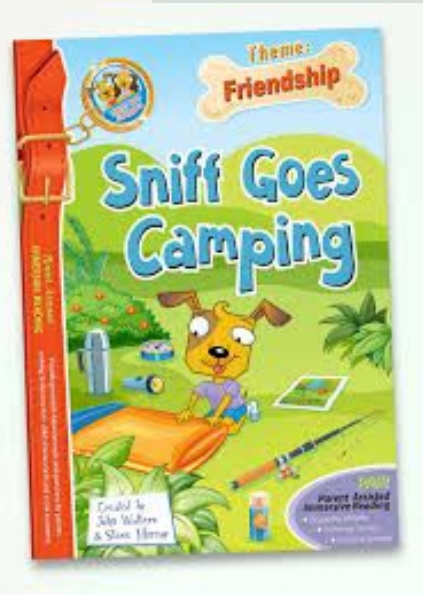
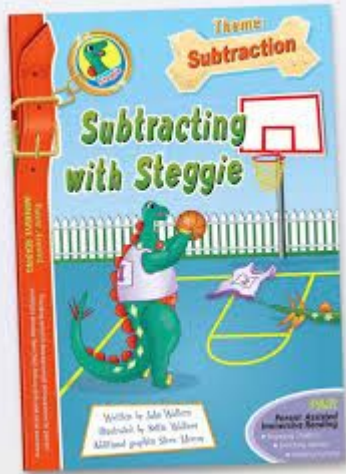
flashlight is powerful torch. Discuss and explain the possible uses of a flashlight lantern (a full powered light). Discuss the safety issues of this 'traditional' light.
Extension word: chorus (to sing out loud together). Re-read the sentences above. Ask your child to suggest possible meanings using the word in context. Prompt as needed.

Inferential questions

Decontextualised language + parent tips

Vocabulary builder

Important Points to Remember



- Give your child **time** and lots of encouragement
- Create conversations
- There are no **wrong** answers just answers that may need support or prompting
- The **conversation** is a critical thing



Mathematics



Foundation Daily Review
Term 1 – Week 3 Lesson 4

Use these objects to make a 3-part pattern



car



ship



bicycle



airplane



train



Important Points to Remember



- Encourage '**struggle time**' at home
- **Repetition** of number facts supports number fluency and recall from **long term memory**
- Develop persistence and independence through **problem solving**
- There can often be **many solutions** (it may not be just the one answer)
- Expose your child to mathematics in the **real world** as often as possible





Play-based Learning



- When children play with other children and interact with adults, they create relationships and friendships, test out ideas, challenge each other's thinking and build new understandings.
- Play provides both a context (a place or space where children play) and a process (a way of learning and teaching) where children can ask questions, solve problems and engage in critical thinking.
- Play-based learning provides opportunities for children to learn as they discover, create, improvise and imagine.





Religious Education



- Scriptures provides an understanding of faith, morality and values
- Catholic beliefs, teachings and values create a sense of community and belonging
- Cross-curricular learning that integrates the light of faith, the joy of discovery and the richness of diverse cultures



The Inquiry Learning Cycle



Inquiry Based Learning

- **Curiosity of Learning:** asking questions about the world around them
- **Problem-Solving Skills:** thinking critically by ‘finding out’ via researching/investigating
- **Learning Enthusiasm:** creating a love for discovering new things
- **Independence:** being confident to make conclusions and take action



Specialist Classes



Oral Language with Simone



Visual Arts with Ellen or Elna



Specialist Classes

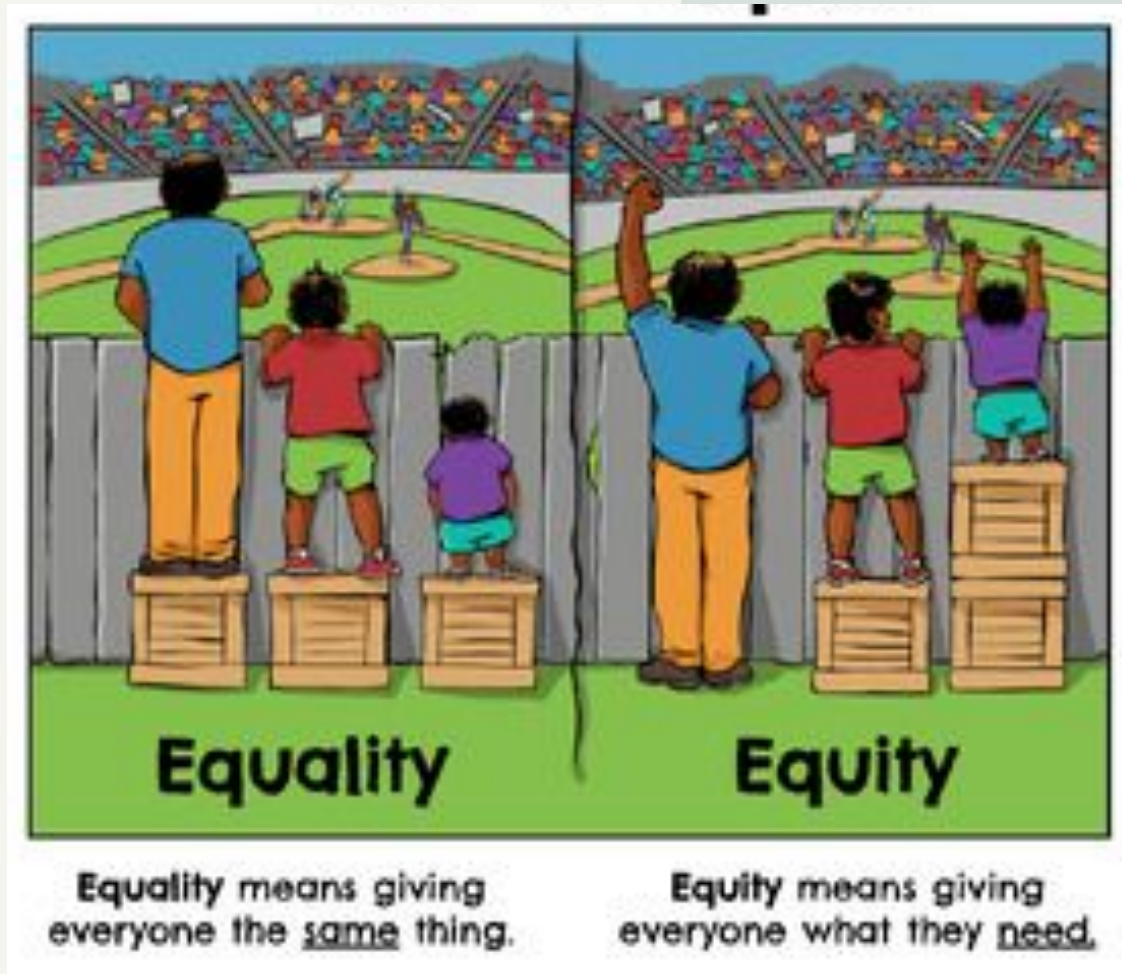


Physical Education with Lisa



Performing Arts with Elna

Student Wellbeing & Learning Diversity



- All children have diverse needs
- At school we meet the needs of all learners. This may look different for some children
- Early identification & intervention if needed leads to the best outcomes
- It is a partnership between home and school

Student Wellbeing & Learning Diversity



Creating safe, inclusive and respectful environments.



What's on at
SMCM

Week 4 term 1

Monday Message 2025



2025 - "Be calm and full of hope."

SMCM FARM Award

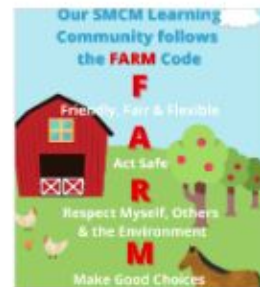
presented to

Student full name

for displaying the following FARM Code behaviour



Whole School Focus- the F in the FARM Code.



F

Friends notice when there is a need for caution. Just like Mary, friends respond with action when they see a need for help.



Jim and Sebastian noticed a large number of bees collecting pollen from the flowering peppercorn tree. So the bees could continue their work, the boys made signs and warned students not to climb the tree at this time.

**Thanks for being Friendly to all members of our SMCM community.
How will your actions contribute to a friendly school community?**

Restorative Practice

What happened?

What do you think needs to happen next?

What were you thinking about at the time?

How do you think they are feeling?

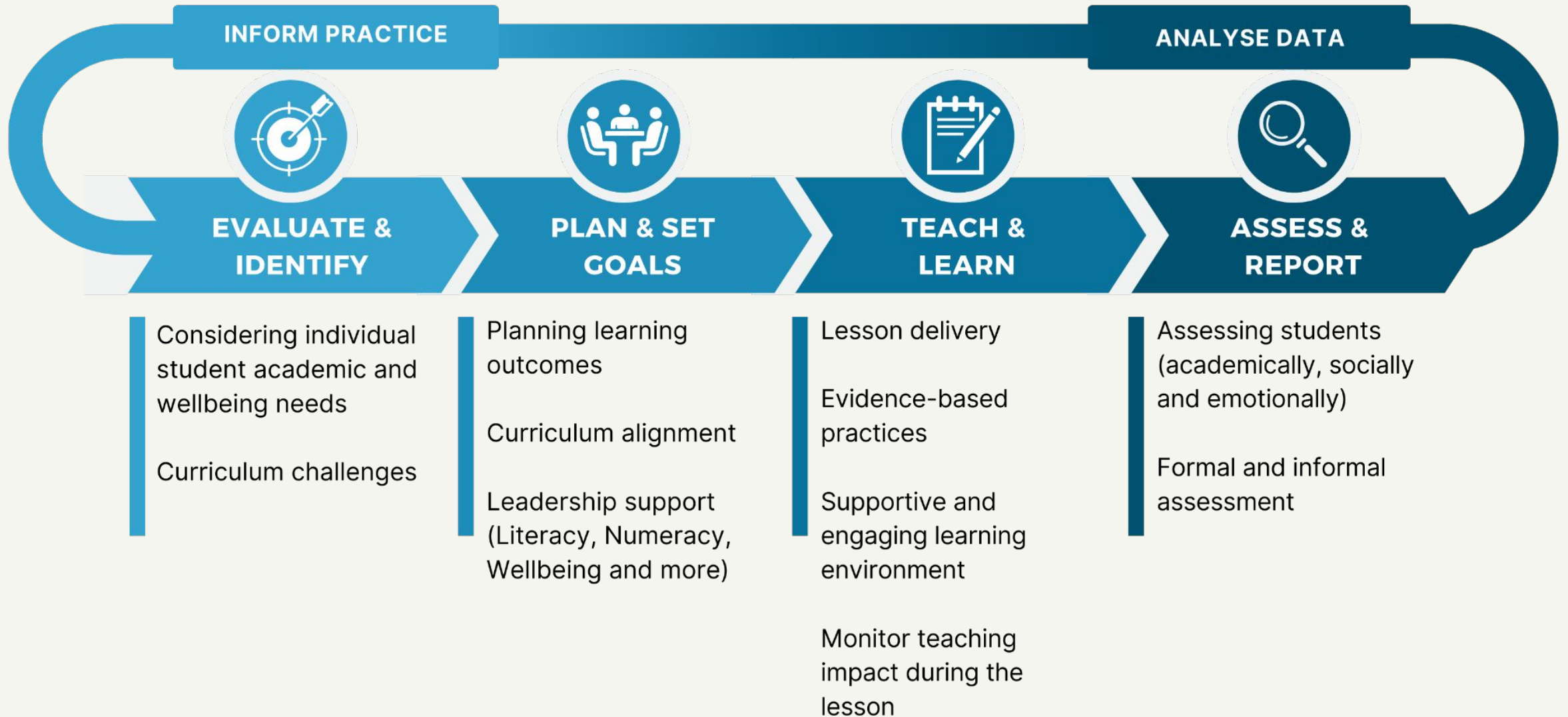
Beginning of Year Assessment



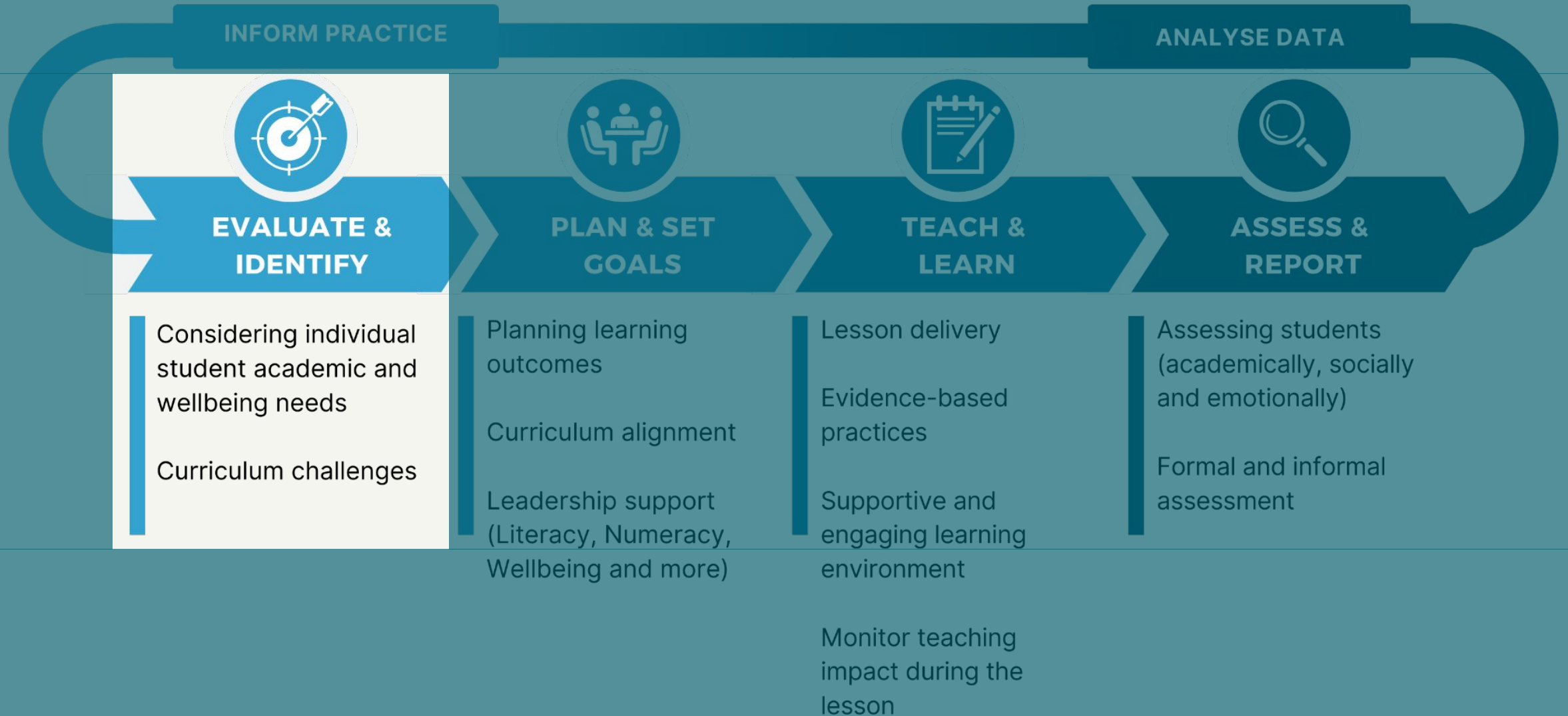
- An opportunity to find out more about what your child can do
- Teachers analyse the data and use the information to inform the teaching
- Targeted teaching allows us to best meet the needs of each child



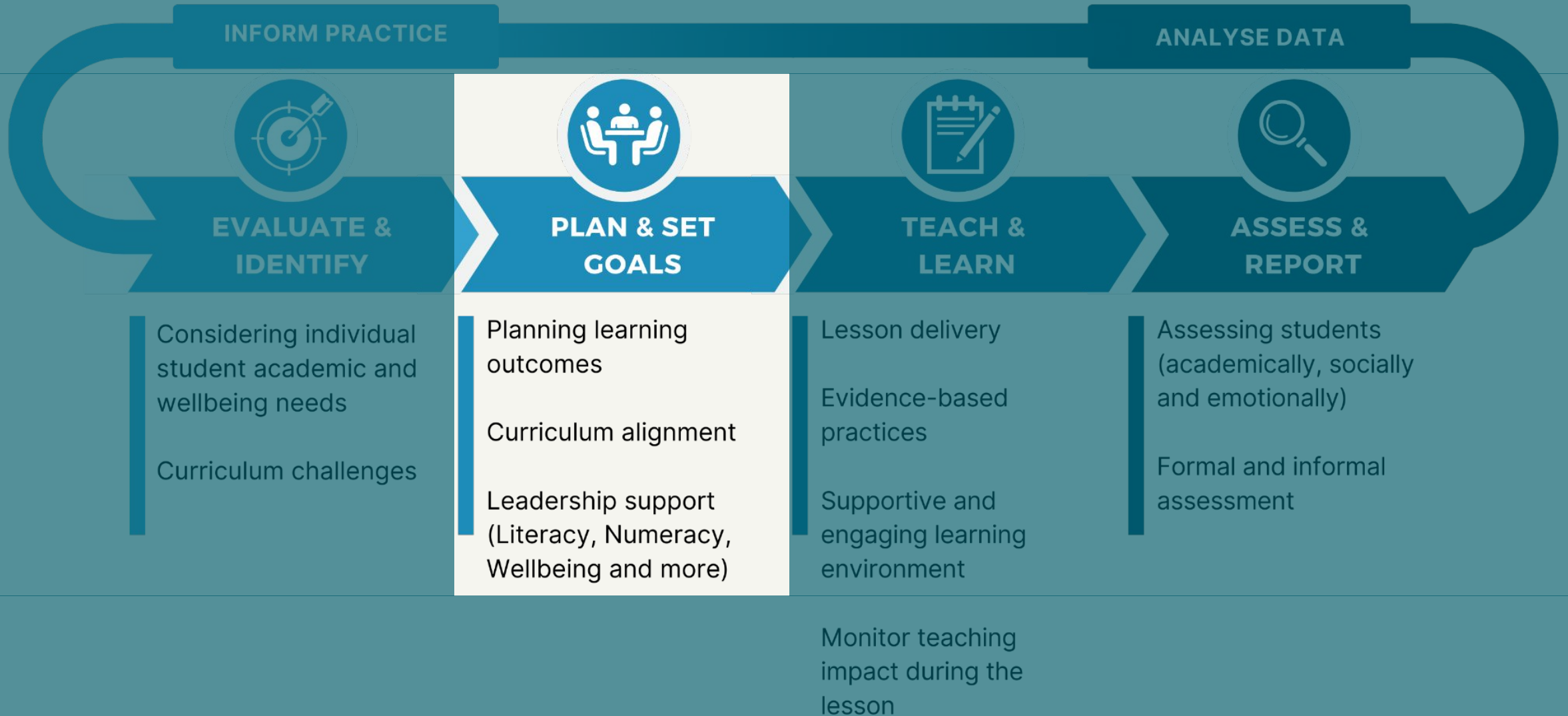
Teaching and Learning



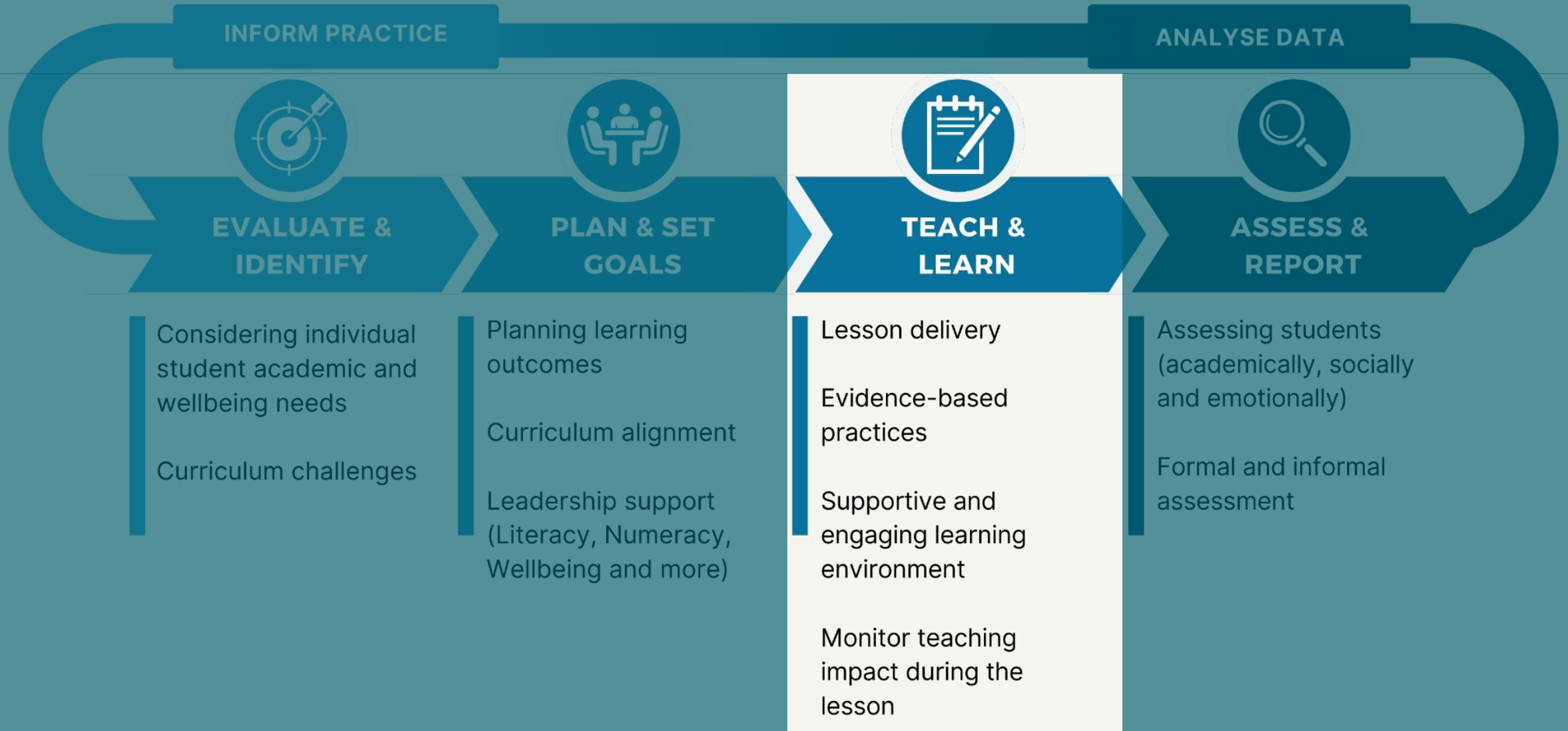
Teaching and Learning



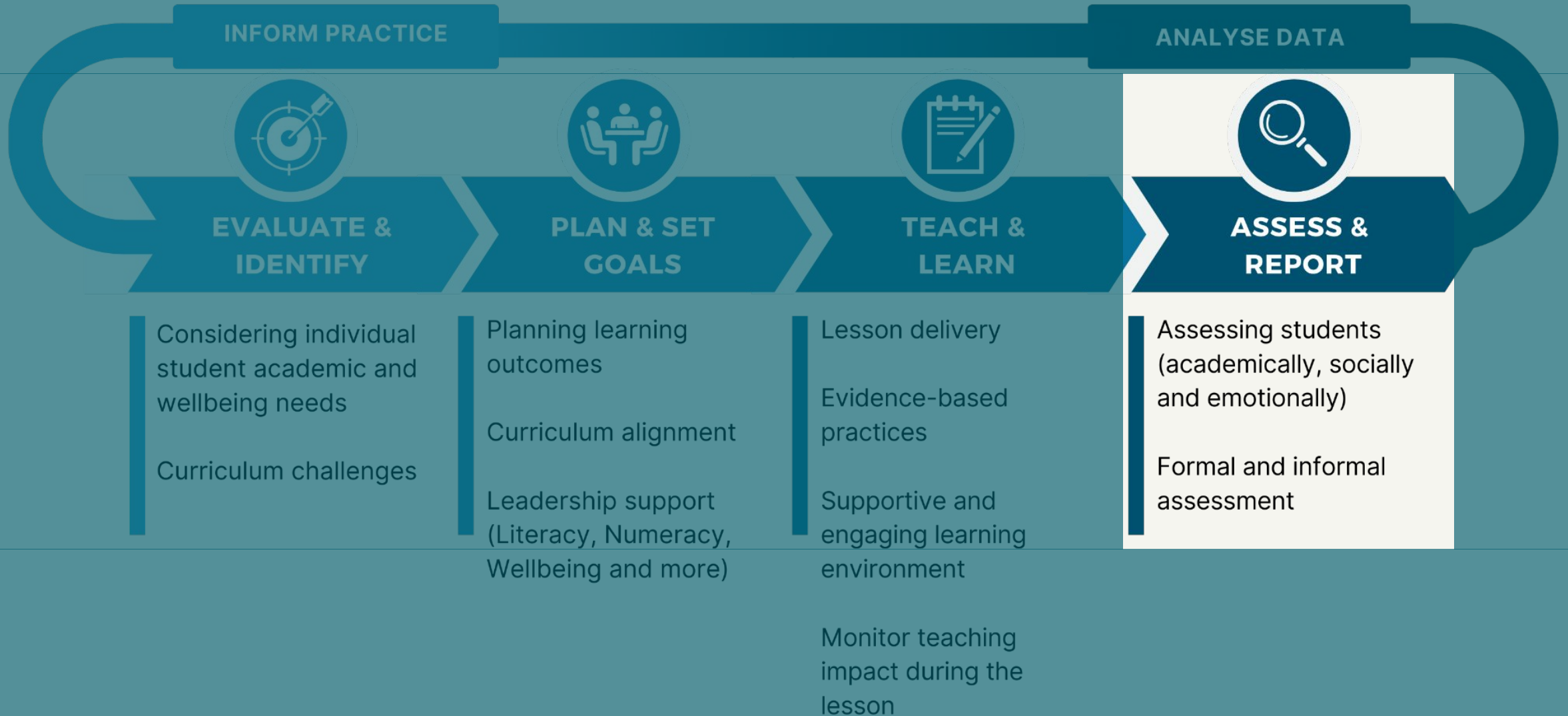
Teaching and Learning



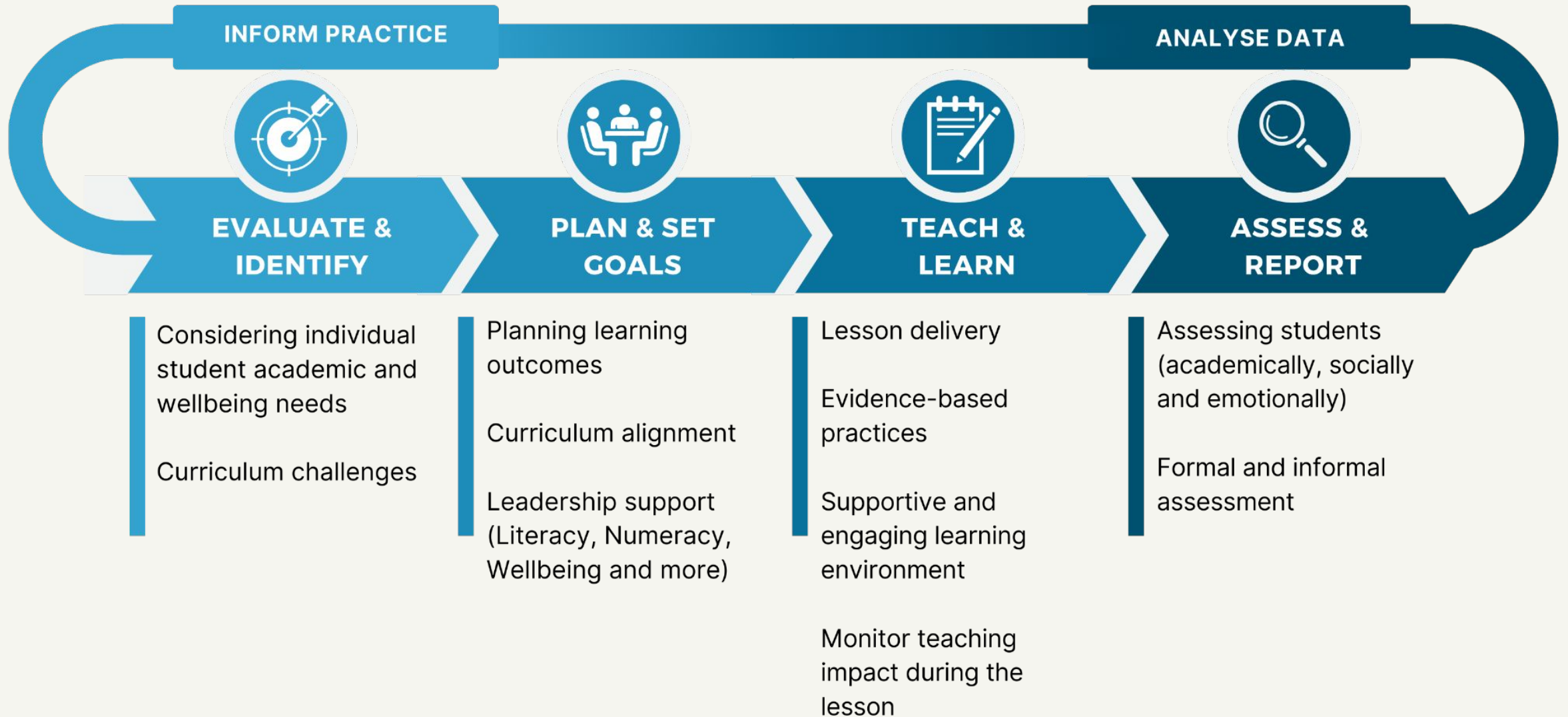
Teaching and Learning



Teaching and Learning



Teaching and Learning





Assessment and Reporting at SMCM

When families and the school community work together, students' learning outcomes improve.

Online Learning Logs

via Seesaw Family App

Online Learning Logs provide ongoing work samples and teacher feedback to students and their families.

Learning Conversations

An opportunity for students, parents and teachers to engage in a conversation about their child's achievements, progression against the curriculum and set new learning goals. Held twice yearly.

Celebration of Learning

Opportunities throughout the year to share, celebrate and engage in the learning that is happening in our school community.



Student Progression Reports

A document that reflects your child's progression against the standards in the Victorian Curriculum. Sent home at the end of Term Two and Term Four.

Parent and Teacher Communication

Regular communication between teachers and parents in the form of meetings, emails and phone calls to discuss students' learning and needs when required.

PLPs and PSGs

Personalised Learning Plans provided by the teacher and Parent Support Group Meetings held throughout the year to support students with diverse learning needs.



Online Learning Logs

The Online Learning Logs (OLLs) is a digital platform for students, parents and teachers to report and celebrate student learning.

You can access your child's OLL through the
Seesaw Family app

The app is available from the App store or
the Google Play store



0:00 / 0:07



Language Experience - Kite Flying

Learning Intention:

I can use pictures, letters and words to record ideas

Success Criteria:

I can use pictures to record my experience of kite flying

I am beginning to use letters and words to record my ideas

I am beginning to write high frequency words

This work sample shows that you are working at the expected standard in writing at this time of year.

Next Learning Goal:

To record letters for each word in a sentence.

TAG! You're it!



When you interact with your child's learning on SeeSaw, try one of the following:

T

Tell them what you liked.

Examples:

"I like how you added so much detail"

"I like how you recorded your reading"



A

Ask them a question.

Examples:

"How did you learn so much about insects?"

"Have you read other books by this author?"



G

Give them a suggestion using "I wonder..."

Example:

"I wonder if I might understand this better if you showed your working out?"



What is CaFE?

Community and Family Engagement

- Children do well in school when they and their families feel connected and part of the wider school community.
- How can you foster this? Attend family events!
 - **Foundation Welcome Picnic - Thursday 13th March**
 - **2025 SMCM Community Fair Saturday 22nd March, 10am-3pm**
- There will be other events throughout the year that we need volunteers for such as Mothers' and Fathers' Day stalls, etc.





Prep Family Welcome Picnic

THURSDAY
13TH MARCH
5PM-7PM

ON THE
SOCCER PITCH
ENTER VIA PED
GATE ON REDDING
RISE OR CREEDS
FARM LANE

BYO PICNIC
DINNER,
RUG/CHAIRS
& YOUR
WHOLE
FAMILY

FUN
ACTIVITIES
BY PRO-
ACTIVITY

2025 SMCM Community Fair

SATURDAY 22ND MARCH

JOIN US FOR THE

2025 SMCM COMMUNITY FAIR

**SATURDAY
22ND MARCH
10.00AM TO 3.00PM**

**ST MARY OF THE
CROSS MACKILLOP CATHOLIC
PARISH PRIMARY SCHOOL**

47 FARMHOUSE BLVD, EPPING

NO ATM - BRING CASH

- FOOD TRUCKS
SAUSAGE
SIZZLE
- MARKET
STALLS
- PONY
RIDES
- CARNIVAL
RIDES
- RAFFLE!
WIN PRIZES!
- FACE
PAINTING
- FAIRY
FLOSS
- LIVE
PERFORMANCE
GROUPS &
LOTS MORE!
- PET FREE
EVENT

Main St Funk
DIAMOND SPONSOR

Melbourne Archdiocese
Catholic Schools



CELEBRATION OF LEARNING

**Wednesday 2nd April
4pm - 6pm**



Staying Connected

Stay Connected at SMCM



 website: smcmeppingnth.catholic.edu.au



Audiri

Our main form of communication. Keep up to date with timely notifications and the latest news.



Seesaw

Access your child's Online Learning Log (OLL) and receive important homegroup reminders.



Instagram

Stay up to date with our learning adventures by following us at:
smcmeppingnth



FIRST FULL WEEK OF SCHOOL FOR PREPS

begins Monday 3rd March





PARENT HANDBOOK

2025 PREP PARENTS



Parent Handbook

A handbook was distributed last year, this can be found in your child's take home pack.

Information discussed can be found in this booklet as well other useful information about school.



Melbourne Archdiocese
Catholic Schools

There where you are, you will find God

St. Mary MacKillop 1871



Questions?

Thank you for supporting your child.
We are partners in learning.

