

NOTICE - ALLERGY - Please ensure all food is nut free
Program Designed for children aged 11-14yrs.

EX CURSION

IN CURSION

Monday 01 July

EX + \$30.00

EXCURSION - VIETNAMESE COOKING AT OTAO KITCHEN

Immerse yourself in a fresh, fun and exciting cooking experience! Learn about the vibrant and aromatic ingredients that make up Vietnamese cuisine, then enjoy Vietnamese rice paper rolls, pancakes and cream caramel.

Myki Card required today!
Arrive by 8.30am



Monday 08 July

EX + \$30.00

EXCURSION - NATIONAL SPORTS MUSEUM & MCG TOUR

Today we will tour the MCG and explore the National sports museum, before challenging yourself in the sports interactive zone!

Myki Card required today!
Arrive by 8.30am



Tuesday 02 July

EX + \$18.00

EXCURSION - MSAC SWIMMING AND WAVE POOL

Join us as we spend the day at Melbourne Sports and Aquatics Centre in Albert Park. You will have access to the Wave Pool, Water Slide Swimming pools. Please remember your towel and swimmers.

Myki Card required today!
Arrive by 8.30am



Tuesday 09 July

EX + \$18.00

EXCURSION - ICE SKATING - O'BRIEN GROUP ARENA

Warm yourself up on a winter's day by getting off the sidelines and into the rink. Don't forget your warm clothing and long socks. Safety helmets must be worn and will be provided free of charge.

Myki Card required today!
Arrive by 8.30am



Wednesday 03 July

EX + \$23.00

EXCURSION - EUREKA SKYDECK 88 AND EDGE EXPERIENCE

We will head to Sky Deck 88 to have a view of the city and test our nerves on the edge experience, followed by lunch at Birrarung Marr and a visit to Hosier Lane, to view the street art.

Myki Card required today!
Please arrive by 8.30am



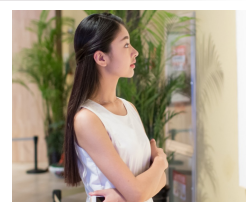
Wednesday 10 July

EX + \$18.00

EXCURSION - NATIONAL ART GALLERY OF VICTORIA

Today we are off on a self-guided tour of the National Art Gallery of Victoria!

Myki Card required today!
Please arrive by 8.30am



Thursday 04 July

EX + \$18.00

EXCURSION - HOYTS MELBOURNE CENTRAL

Today we're off to the movies to see the latest blockbuster movie, popcorn and drink included. (Movie time to be confirmed, please see coordinator)

Myki Card required today!
Arrive by 8.45am, Myki card required



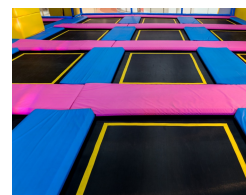
Thursday 11 July

EX + \$23.00

EXCURSION - LATITUDE

Bounce, Climb and Fly as you challenge yourself on the trampolines, rock walls and ropes course at Latitude Heidelberg.

Myki Card required today!
Arrive by 8.30am



Friday 05 July

EX + \$18.00

EXCURSION - CLIPNCLIMB & GAME WALL

An epic adventure with double the fun. Challenge your friends as you race up the walls of clipNclimb and maneuver through the game wall

Myki Card required today!
Arrive by 8.30am



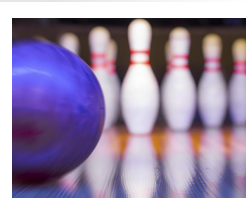
Friday 12 July

EX + \$23.00

EXCURSION - STRIKE MELBOURNE CENTRAL BOWLING AND LASER TAG

Challenge your friends as you take them on in a game of bowling and laser tag today!

Myki Card required today!
Arrive by 8.30am



Junior Adventures Group continues to pioneer the OSHC sector, building stronger communities and brighter futures for more than 70,000 children, 40,000 families and more than 400 schools across Australia.

Our Values

- Considerate - Be there for others
- Passionate - Bring energy and determination
- Courageous - Challenge ourselves

The values we share guide our behaviour as we work towards our vision to **build brighter futures together.**



What we offer

- A healthy, safe, respectful and engaging environment
- Caring, enthusiastic, fun and friendly team
- New and popular excursions, incursions and theme days
- Stimulating experiences tailored to children's interests, abilities and current trends
- OSHClub endeavour to link each fun experience to key learning outcomes



We are a child safe organisation



What Does My Child Bring?

Please bring breakfast, morning tea, lunch, afternoon tea and a refillable drink bottle. If bringing food please make sure it's nutritious and doesn't require heating or cooking.

Please be mindful of the planned incursion/excursion and ensure your children are dressed appropriately. Don't forget your sun smart hat, comfortable clothes, closed shoes and a drink bottle.

To avoid loss or disappointment, please leave your valuables, money and electronic toys (including tablets and smart phones) at home.



Healthy Eating

OSHClub follows the Australian dietary guidelines which can be found at <https://www.eatforhealth.gov.au>

Activity Changes

If an excursion or incursion (due to unforeseen circumstances) is cancelled, the activity will either be postponed or an alternative activity of equal value will be provided where possible.



Before making your booking & cancellations

All children must be enrolled with OSHClub prior to booking via oshclub.com.au. Bookings made within 5 days for a Vacation Care session will incur an extra charge of \$4.00 per day per child. 7 days notice is required for cancellation of a Vacation Care booking to ensure you will not incur out of pocket costs. Please note that bookings can not be made online within 5 days of the session commencing. In order to book within this period, you will need to contact the service directly, the Customer Service and Billing Team on 1300 395 735 or by emailing oshaccounts@junioradventuresgroup.com.au.

Child care subsidy

Our services are registered with Centrelink, so you will be able to claim Child Care Subsidy on your fees. For further information please visit <https://www.education.gov.au/new-child-care-package-frequently-asked-questions>.



Children with additional needs

We support all children including children with additional needs. If you would like to provide additional information about your child and his/ her needs or require inclusion support funding, please contact us 6 weeks prior to program commencement on for staffing purposes.