



Glen Innes
• High School •

HOLIDAY

Activities Guide

COOKING | QUIZZES | HANDICRAFT

AND MORE!!

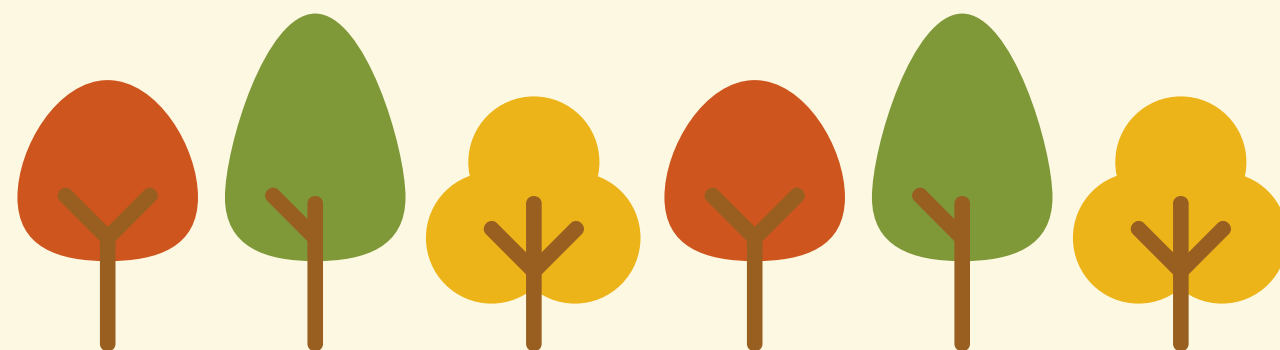


19TH DECEMBER 2022 TO
27TH JANUARY 2023

Local Destination Ideas

There are some amazing places to visit in and around Glen Innes. Many of these destinations don't cost anything to visit - apart from the fuel to get there! For destination ideas visit:

<https://www.visitnsw.com/destinations/country-nsw/glen-innes-and-inverell-area>



**THE YOUTH
BOOTH**



Glen Innes Severn Council - The Youth Booth
152 Wentworth St, Glen Innes
Youth Based programs for 12-24 years
Ph 67302530. Mob 0418281657
Facebook Glen Innes Youth

Youth Booth Activities

THURSDAY 5TH JANUARY - PICNIC AT THE POOL 12-4PM (FREE ENTRY), GISC
YOUTH BOOTH

WEDNESDAY 11TH JANUARY- TOTEM SKATE WORKSHOP 9AM -1 PM SKATE
PARK ,GISC YOUTH BOOTH

MONDAY 23RD JANUARY - AMANDA SHAW "FOOD FOR MOOD" 12-4 PM ,
GISC YOUTH BOOTH

TUESDAY 24TH JANUARY - PICNIC AT THE POOL 12-4 PM , GISC YOUTH
BOOTH

WEDNESDAY 25TH JANUARY - UNCLE CLAYTON BLACKLOCK CULTURAL ART
WORKSHOP 12-2 PM , GISC YOUTH BOOTH





Swim Centres

**GLEN INNES SWIM CENTRE - OPEN 10.30AM TO 6PM.
179 WEST AVE GLEN INNES- 6730 2440 OR 0436 917 339.**

**EMMAVILLE SWIM CENTRE - OPEN 12 NOON TO 6PM.
35 PARK ST EMMAVILLE -
02 6734 7249**

*Fun &
games*

**NORTHSKATE GLEN INNES - 110-114 LAMBETH ST - 0407 452
482 - SEE NORTHSKATE FACEBOOK PAGE FOR FURTHER INFORMATION.**

**TENPIN INVERELL - 79 RING ST INVERELL - 6721 2536 -
[HTTP://WWW.TENPININVERELL.COM.AU/](http://www.tenpininverell.com.au/)**

**ARMIDALE SPORT & REC - 227 MANN ST ARMIDALE - 67728099 -
[HTTPS://WWW.ARMIDALESPORTANDREC.COM.AU/](https://www.armidalesportandrec.com.au/)**

MOVIES

CHAPEL THEATRE GLEN INNES - 143 CHURCH ST GLEN INNES - 67325688 - [HTTPS://GIAC.COM.AU/](https://giac.com.au/)

MAJESTIC CINEMA INVERELL - 168 BYRON ST INVERELL - 67211222 - [HTTPS://WWW.MAJESTICCINEMAS.COM.AU/](https://www.majesticcinemas.com.au/)

BELGRAVE CINEMA ARMIDALE - 137 DUMARESQ ST ARMIDALE - [HTTPS://WWW.BELGRAVECINEMA.COM.AU/](https://www.belgravecinema.com.au/)

MUSEUMS

LAND OF THE BEARDIES HISTORY HOUSE

- OPEN FRIDAYS 10AM TO NOON AND 1 TO 4PM, SATURDAYS AND SUNDAYS 1PM TO 4PM. (OPENING HOURS MAY VARY - PLEASE CHECK THE WEBSITE FOR UPDATES:

[HTTPS://WWW.BEARDIESHISTORYHOUSE.INFO/](https://www.beardieshistoryhouse.info/)

EMMAVILLE MINING MUSEUM

- OPEN 10AM TO 4PM (CLOSED THURSDAYS AND PUBLIC HOLIDAYS) - GOLD COINENTRY.

NEW ENGLAND REGIONAL ART MUSEUM (NERAM)

- OPENTUESDAY TO SUNDAY 10AM TO 4PM - 106-114 KENTUCKY ST ARMIDALE -
6772 5255 [HTTPS://WWW.NERAM.COM.AU](https://www.neram.com.au)

INVERELL PIONEER VILLAGE

- OPENING HOURS TUESDAY TO FRIDAY: 10AM TO 4PM -
SATURDAY & SUNDAY: 9.30AM TO 1.30PM
OPEN MONDAYS ONLY DURING NSW SCHOOL HOLIDAYS OR BY PRIOR
ARRANGEMENT. [HTTPS://WWW.INVERELLPIONEERVILLAGE.ORG.AU/](https://www.inverellpioneervillage.org.au/)

NATIONAL TRANSPORT MUSEUM

- RIFLE RANGE RD INVERELL - OPEN
FRI 10:00 AM TO 4:00 PM, MON - SUN 10:00 AM - 4:00 PM -
6721 2270

Glen Innes Library

School Holiday Activities! we have some fun activities for school aged kids on in the holidays! make sure you book online to secure a spot by following the links below:

Movie, Thursday 22nd 10am <https://www.eventbrite.com.au/e/463...>

Kids Activity Lego Sensory <https://www.eventbrite.com.au/e/463...>

Kids Activity Planting <https://www.eventbrite.com.au/e/463...>

Kids Activity Science by Potions <https://www.eventbrite.com.au/e/460...>

Kids Learning Bush Kids First Aid <https://www.eventbrite.com.au/e/474...>

Movie at Deepwater <https://www.eventbrite.com.au/e/464...> and

Emmaville <https://www.eventbrite.com.au/e/464...>

Kids Activity Lego Show Challenge no booking needed!

FREE GISC LIBRARY SCHOOL HOLIDAY FUN



<p>Thursday 22nd December 10:00 Glen Innes</p>	<p>Movie </p>
<p>Tuesday 10th January 10:00 Glen Innes</p>	<p>Kids Activity  Lego Sensory </p>
<p>Thursday 12th January 2:30 Glen Innes</p>	<p>Kids Activity Planting </p>
<p>Tuesday 17th January 10:00 Glen Innes</p>	<p>Kids Activity Science  </p>
<p>Thursday 19th January 10:00 Glen Innes</p>	<p>Kids learning Bush First Aid  </p>
<p>Thursday 19th January 10:00 Deepwater 1:30pm Emmaville</p>	<p>Movie </p>
<p>Tuesday 24th January 10.00 Glen Innes</p>	<p>Kids Activity Lego Show Challenge </p>

 and Modelling Clay available at Deepwater and Emmaville during January

Bookings are essential and can be done through our Facebook page.
0267302600 gleninneslibrary.org.au

Other Activities/Events

THURSDAY 12TH JANUARY - THE GREAT RACE 10AM START SKATE PARK ,
CENTRECARE

THURSDAY 12TH JANUARY TO FRIDAY 13TH JANUARY- ABORIGINAL YOUTH
CAMP AT THE WILLOWS , 10 AM (MEET AT LANDS COUNCIL), GILAC



FREE CREATIVE WORKSHOPS FOR YOUTH 12 - 24

SUMMER CREATE

Proudly funded by



Weaving with Natural Fibres

Adele Chapman Burgess 5 January 2023 (10 - 2pm)
at Glen Innes Pottery Club.... 12 - 24years

Clay Sculpture - Native Fauna

Max Powell 7 January 2023 (10 - 4pm)
at Glen Innes Pottery Club..... 16 - 24years

Clay Sculpture - Native Fauna

Max Powell 11 January 2023 (10 - 1pm)
at Glen Innes Pottery Club..... 12 - 15years

Silver Jewellery Design

Richard Moon 11 January 2023 at The Makers Shed (10 - 4pm)
16 - 24years

Pottery Planters

Latenight Potters 15 January 2023 (10 - 1pm)
at Glen Innes Pottery Club 12 - 24 years

Copper Foldforming Jewellery

Richard Moon 19 January 2023 at The Makers Shed
(10 - 1pm) ... 12 - 15years

Carving Wooden Spoons

Phil Doye 21 January 2023 (10 - 4pm)
at Glen Innes Pottery Club
16 - 24years

Bookings & enquiries - Glen Innes Pottery Club

Text Max - 0401 603 322 or
email - max.powell@bigpond.com

Cost
FREE
Limited
Spots
Available

SCHOOL Holiday



PROGRAM

WITH



POLICE CITIZENS
YOUTH CLUBS NSW

**Tuesday
JAN 10
10am -
2pm**

**Thursday
JAN 12
10am -
2pm**

**Tuesday
JAN 17
10am -
2pm**

**Tuesday
JAN 24
10am -
2pm**

Futsal
Boxing
Fitness Circuit
Games

Basketball
Mini Olympics
Fitness Circuit
Games

Touch football
Boxing
Indoor Cricket
Games

Touch football
Mini Olympics
Futsal
Games

**FUN INTERACTIVE ACTIVITIES
OPEN TO ALL INTERESTED COMMUNITY
MEMBERS**



Glen Innes Indoor Sport Centre
180 West Ave, Glen Innes, NSW, 2370

Proudly Funded by the NSW Government and
supported by Glen Innes Severn Council

Winangangii Ngurrambaa (Learning on Country) Aboriginal Youth Camp

Aboriginal Identity Aboriginal Dance
Aboriginal Language Aboriginal Art and Weaving
Fun and Games

PRIDE

STRENGTH

IDENTITY

This workshop is aimed at strengthening & maintaining the identity of Aboriginal young people from Glen Innes & surrounding areas from 10-18 years of age.

WHERE: "The Willows", Ngarabul Country

COSTS: Free

WHEN: Thursday 12th & Friday 13th January
2023

10.00AM. This is an overnight camp, so the pickup point will be at Glen Innes Land Council (181 Lang Street)

Please contact Dave Widders from Widders Consultancy to register.

Dave Widders
Widders Consultancy
Camp Organiser
0448 655 113
davewidders6@gmail.com

Proudly supported by:



Aboriginal
Affairs



Famous Cars

Manufacturers and models of famous cars



ALFA ROMEO
ASTON MARTIN
AVANTI
BMW
BUGATTI
CADILLAC
CAMARO
CHEVELLE
CONTINENTAL
CORSAIR
CORVETTE

DELOREAN
DESOTO
DEVILLE
EDSEL
HUDSON
IMPALA
JAGUAR
MERCEDES BENZ
MILITARY JEEP
MODEL A
MODEL T

MONTE CARLO
MUSTANG
NOVA
PACKARD
PORSCHE
ROADSTER
ROLLS ROYCE
STUDEBAKER
THUNDERBIRD
WOODY WAGON

Find more word searches at
<https://www.thesprucecrafts.com/free-hard-word-searches-1357162>

Get Crafty!

FIND LOTS OF CRAFT IDEAS AT:

[HTTPS://RAISINGTEENSTODAY.COM/COOL-AND-TRENDY-DIY-CRAFTS-FOR-TEENS/](https://raisingteens.today.com/cool-and-trendy-diy-crafts-for-teens/)

[HTTPS://DIYPROJECTS.COM/PROJECTS-FOR-TEENAGERS/](https://diyprojects.com/projects-for-teenagers/)

[HTTPS://WWW.FUNLOVINGFAMILIES.COM/CRAFTS-FOR-TWEENS-AND-TEENS/](https://www.funlovingfamilies.com/crafts-for-tweens-and-teens/)



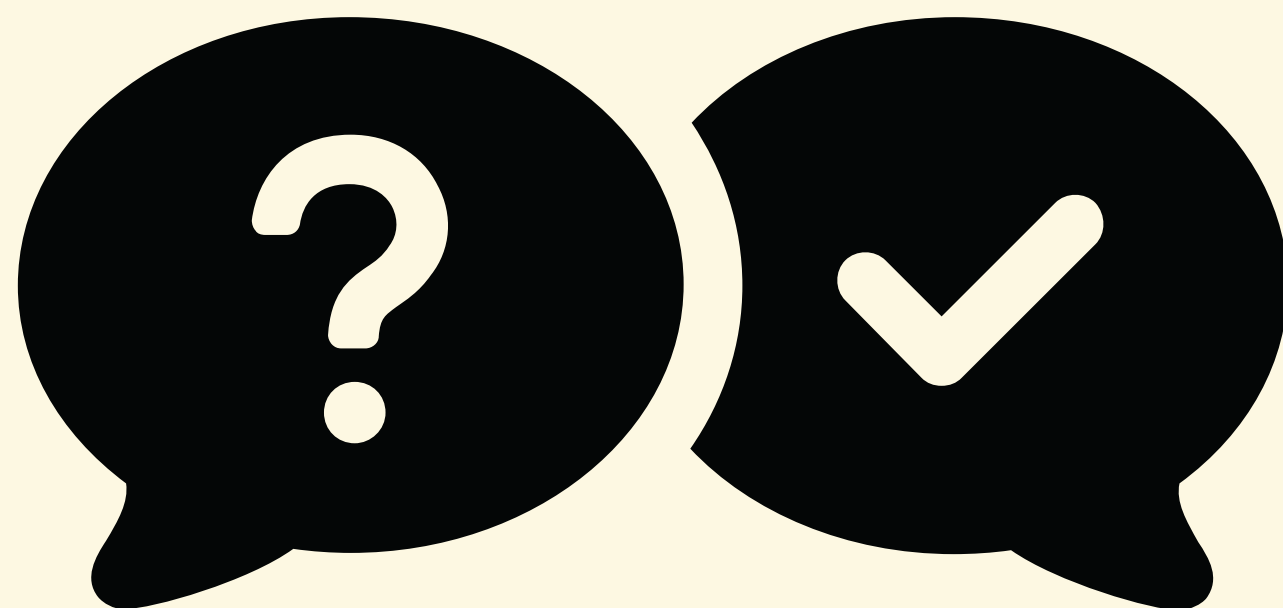
Quizzes

Quiz 1

1. The highest mountain in any Australian state or territory is
Mt Buller/ Mt Kosciusko/ Ram's Head/ Mount McClintock
2. A fiend in 'Oliver Twist' is
Falstaff/ Fagin/ Friday/ Faraday
3. -273°C is
Antarctica's coldest recorded temperature/ Planet Saturn's surface temperature/ Absolute Zero/ the temperature at which mercury freezes
4. The great composer, pianist and conductor Rachmaninoff was
Russian/ German/ Hungarian/ Polish
5. Which one is famous?
Aristotle's Square/ Euclid's Parallelogram/ Pythagoras' Circle/ Pascal's Triangle
6. The capital city of Ukraine is
L'viv/ Kiev/ Kharkiv/ Odessa
7. A skate is
a fish/ a bird/ an insect/ a mammal
8. Marie Curie moved to France from
Switzerland/ Poland/ Austria/ Romania
9. The flag of Hungary has three stripes that are
red, white and green (horizontal)/ red, white and green (vertical)/ red, yellow and green (horizontal)/ red, yellow and green (vertical)
10. Each of these men was Prime Minister of Australia. Which one was our 2nd Prime Minister?
George Reid/ John Watson/ Alfred Deakin/ Edmund Barton

Quiz 2

1. The Himalaya Mountains are in
South America/ Africa/ Asia
2. Napoleon was a famous
general/ artist/ composer
3. The world's largest ocean is the
Pacific/ Indian/ Atlantic
4. The capital city of Italy is
Milan/ Paris/ Rome
5. Marco Polo went on a long journey
by ship/ on foot/ by sled
6. Tigers are native to
Africa/ Asia/ both Africa and Asia
7. Picasso was a famous
artist/ musician/ writer
8. Which of these has a coastline?
Sweden/ Switzerland/ both
9. Which of these has a coastline?
Uganda/ Zimbabwe/ neither
10. Tectonic plates are
in valleys/ in mountain ranges/ below the ground



Quiz Answers

Quiz 1 Answers

1. Mount McClintock (*in Australian Antarctic Territory*)

2. Fagin

3. Absolute Zero

4. Russian

5. Pascal's Triangle

6. Kiev

7. fish

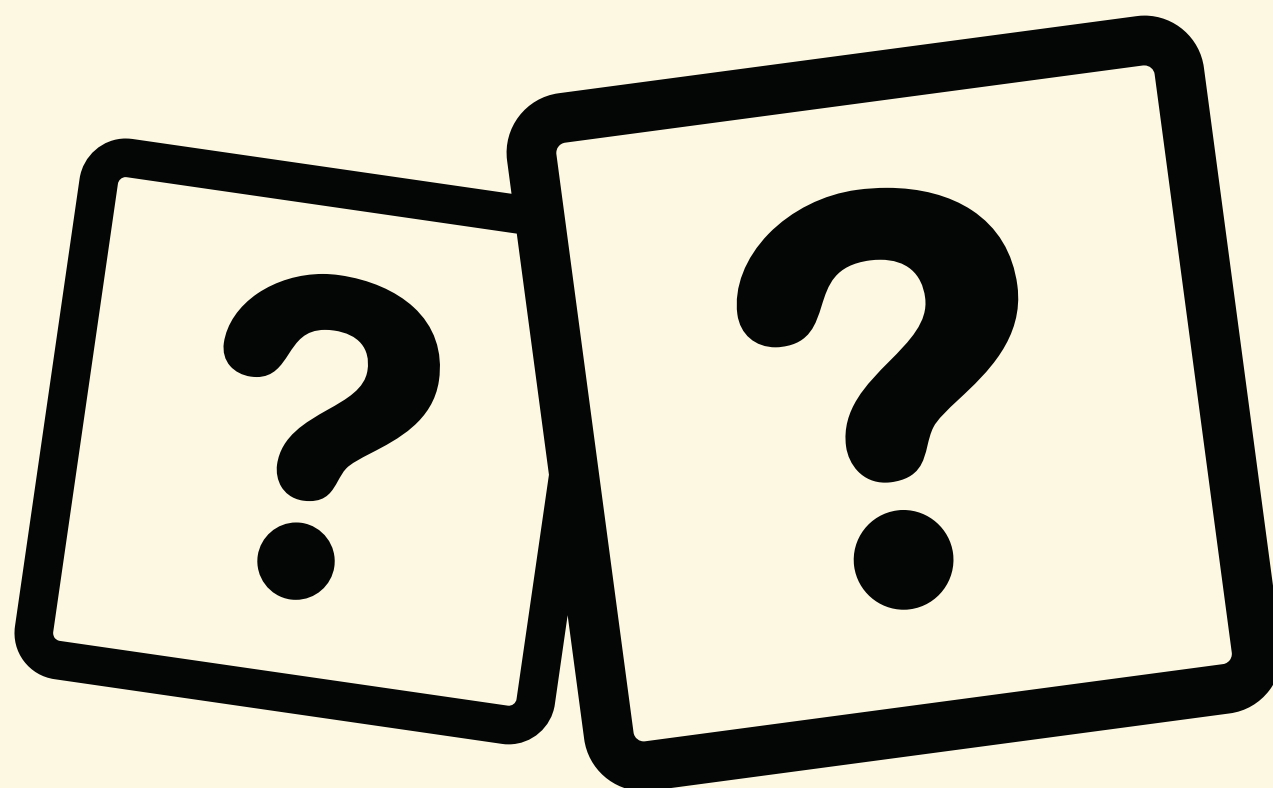
8. Poland

9. red, white and green (horizontal)

10. Alfred Deakin

Quiz 2 Answers

- 1. Asia**
- 2. general**
- 3. Pacific**
- 4. Rome**
- 5. on foot**
- 6. Asia**
- 7. artist**
- 8. Sweden**
- 9. neither**
- 10. below the ground**





BAKED FRESH

Cooking ideas

BEST BROWNIES

Ingredients

1 1/2 cups granulated sugar*

3/4 cup all-purpose flour

2/3 cup cocoa powder, sifted if lumpy

1/2 cup powdered sugar, sifted if lumpy

1/2 cup dark chocolate chips

3/4 teaspoons sea salt

2 large eggs

1/2 cup canola oil or extra-virgin olive oil**

2 tablespoons water

1/2 teaspoon vanilla

Instructions

1. Preheat the oven to 160 C. Lightly spray an 8x8 baking dish (not a 9x9 dish or your brownies will overcook) with cooking spray and line it with parchment paper. Spray the parchment paper.

2. In a medium bowl, combine the sugar, flour, cocoa powder, powdered sugar, chocolate chips, and salt.

3. In a large bowl, whisk together the eggs, olive oil, water, and vanilla.

4. Sprinkle the dry mix over the wet mix and stir until just combined.

5. Pour the batter into the prepared pan (it'll be thick - that's ok) and use a spatula to smooth the top. Bake for 40 to 48 minutes, or until a toothpick comes out with only a few crumbs attached (note: it's better to pull the brownies out early than to leave them in too long). Cool completely before slicing.

*** Store in an airtight container at room temperature for up to 3 days. These also freeze well!



This is the easiest and best chocolate cake recipe ever!

Ingredients

180g butter

250g self raising flour

400g sugar (yes, lots of sugar, but can be reduced to suit your taste)

50g cocoa powder

4 eggs

250mls milk

1 tsp vanilla

Method

Grease and line a 23cm round cake tin or brush a 26cm bundt tin with melted butter.

Preheat oven to 180degC

Melt 180g butter

Put remaining ingredients in a large mixing bowl and pour melted butter over the top. Beat well for 3 minutes. Pour mixture into prepared tin and bake 40-45 minutes. DON'T OVERCOOK!

***You can replace cocoa powder with other flavourings - get creative with this recipe!

Condensed Milk Biscuits - or the best biscuit recipe ever!!! Will make 100 biscuits and the dough can be frozen!

Ingredients

500g butter softened

1/2 cup caster sugar

400g can sweetened condensed milk

5 cups self raising flour

Method

Preheat oven to 180 degrees C. Line baking trays with baking paper

Cream butter and sugar, add condensed milk. Slowly add flour.

Add choc chips, dried fruit, nuts, make into jam drops....whatever flavours/additions your heart desires! Bake 12 to 15 minutes or until turning golden on the edges!

Peanut Butter Balls - These are sooo delicious! The recipe says smooth peanut butter, but crunchy is nice as well. You can use milk chocolate, white chocolate, or dark chocolate to coat the balls. I usually make a mixture.

- 2 1/2 cups icing sugar
- 1/2 cup butter melted
- 1 cup smooth peanut butter
- 2 cups Rice Bubbles
- 1 cup milk choc bits melted
- 1 tbs copha

1. Mix together the icing sugar, butter and peanut butter.
2. Add Rice Bubbles and mix well - if mixture too wet to roll into balls, add more icing sugar
3. Roll into 2 cm sized balls and chill for 30 minutes.
4. Melt the milk chocolate with 1 tablespoon of Copha.
5. Dip chilled balls in chocolate and let set on waxed paper.



STAY SAFE!

Wishing you all a wonderful Christmas and New Year.
If you are travelling, travel safe!

Remember to take care of your physical and mental health. If you, or someone you know needs help or support through the holidays here is a list of numbers/websites. Remember, if you or someone you are helping are in immediate danger, ring triple zero (000).



Mental Health Services and Support

Beyond Blue

24/7 mental health support service

1300 22 4636
beyondblue.org.au

headspace

Online support and counselling to young people aged 12 to 25

1800 650 890 (9am-1am daily)
For webchat, visit: headspace.org.au/eheadspace

Kids Helpline

24/7 crisis support and suicide prevention services for children and young people aged 5 to 25

1800 55 1800
kidshelpline.com.au

1800RESPECT

24/7 support for people impacted by sexual assault, domestic violence and abuse

1800 737 732
1800respect.org.au

Lifeline

24/7 crisis support and suicide prevention services

13 11 14
lifeline.org.au

Suicide Call Back

24/7 crisis support and counselling service for people affected by suicide

1300 659 467
suicidecallbackservice.org.au

Mensline

24/7 counselling service for men

1300 78 99 78
mensline.org.au

QLife

LGBTI peer support and referral

1800 184 527 (9pm-10pm daily)
qlife.org.au (online chat 3pm-12am daily)

If you are concerned about someone at risk of immediate harm, call 000 or go to your nearest hospital emergency department.

