

ndis

# Supports you might be allowed to spend NDIS money on



Easy Read



## Blue words



Some words in this book are **blue**.

We write what the blue words mean.

## Help with this book



You can get someone to help you

- understand this book
  
- find more information.



Contact information is at the end of this book.

## About this book

This book is from the National Disability Insurance Agency.



We deliver the **National Disability Insurance Scheme** or NDIS.

The NDIS gives services and support to people with **permanent disability**.



Permanent disability means a disability that will **not** go away.

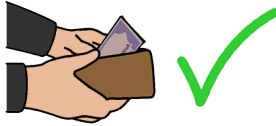


The NDIS also gives services and support to people who need **early intervention**.



Early intervention means we work with some people now so they need less support later.

We agreed to change some laws about the NDIS.



The laws change what supports you

- can spend NDIS money on



- **cannot** spend NDIS money on.

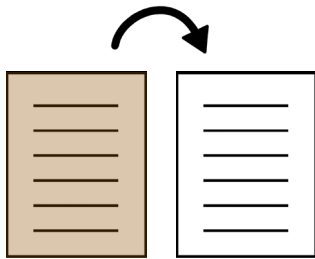
You **might** be allowed to get a **replacement support** if we agree.

Replacement supports are supports

- we said you **cannot** spend NDIS money on

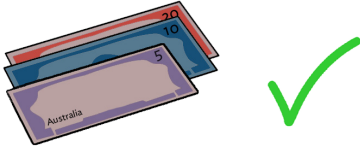


- for you to use in some cases.



A replacement support **must**

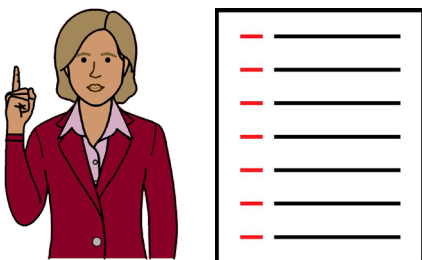
- replace a support in your plan



- cost the same or less than the support in your plan



- be the same or better for you than the support in your plan

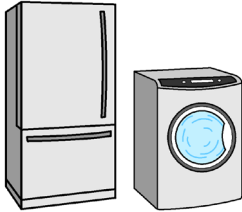


This book is a **summary** that explains replacement supports.

Summary means we only include the most important ideas.

## Supports that you might be allowed to spend NDIS money on

### Standard commercially available household items



This means things for a home that

- lots of shops sell



- are not made for people with disability.

You **might** be allowed to spend NDIS money on these things if they mean you

- do not need a support worker as much

or

- do not need **assistive technology** as much.



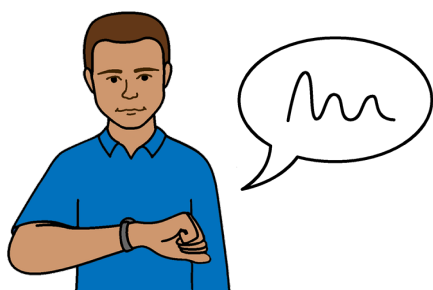
Assistive technology means things that help people with disability.

## Smart watches



A smart watch is something that

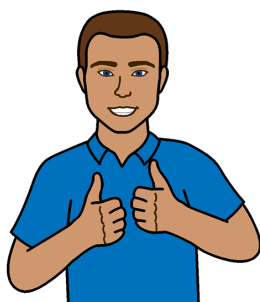
- connects to the internet
- you can wear on your wrist.



You **might** be allowed to spend NDIS money on a smart watch if it

- helps you communicate with other people

and



- is the best way for you to communicate with other people.

## Tablets



A tablet is something that

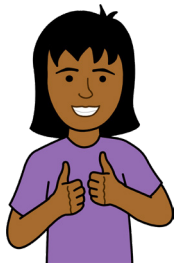
- connects to the internet
- you can carry around with you.



You **might** be allowed to spend NDIS money on a tablet if it

- helps you communicate with other people

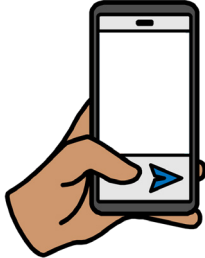
and



- is the best way for you to communicate with other people.

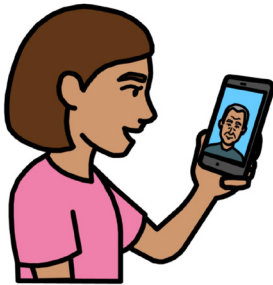


## Smart phones



A smart phone is something that

- connects to the internet
- you can carry around with you.



You **might** be allowed to spend NDIS money on a smart phone if it

- helps you communicate with other people

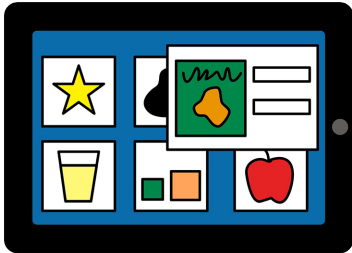
and



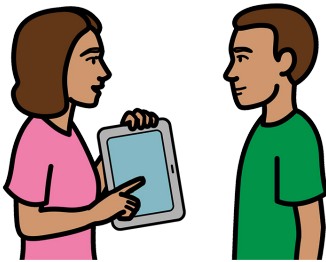
- is the best way for you to communicate with other people.

## Apps for accessibility and communication purposes

Apps for accessibility and communication purposes are programs that



- you put on something, like a tablet
- help you communicate with other people.



You **might** be allowed to spend NDIS money on apps if they

- help you communicate with other people

and



- are the best way for you to communicate with other people.

## If you need help with English



Use the free Translating and Interpreting Service or TIS to make a phone call.

You can call the TIS in your language.



Call            131 450

Give the TIS officer the phone number you want to call.

## If you need help to speak or listen



Use the National Relay Service to make a phone call.

You must sign up to the service first.

Website    [accesshub.gov.au/nrs-helpdesk](https://accesshub.gov.au/nrs-helpdesk)

Call            1800 555 660

This Easy Read document was created by Scope (Aust) Ltd. in October 2024 using Picture Communication Symbols (PCS). PCS is a trademark of Tobii Dynavox, LLC. All rights reserved. Used with permission. This document must not be sold to third parties. The images must not be reused without permission. For more information about the images, contact Scope on 1300 472 673 or visit [scopeaust.org.au](https://scopeaust.org.au)