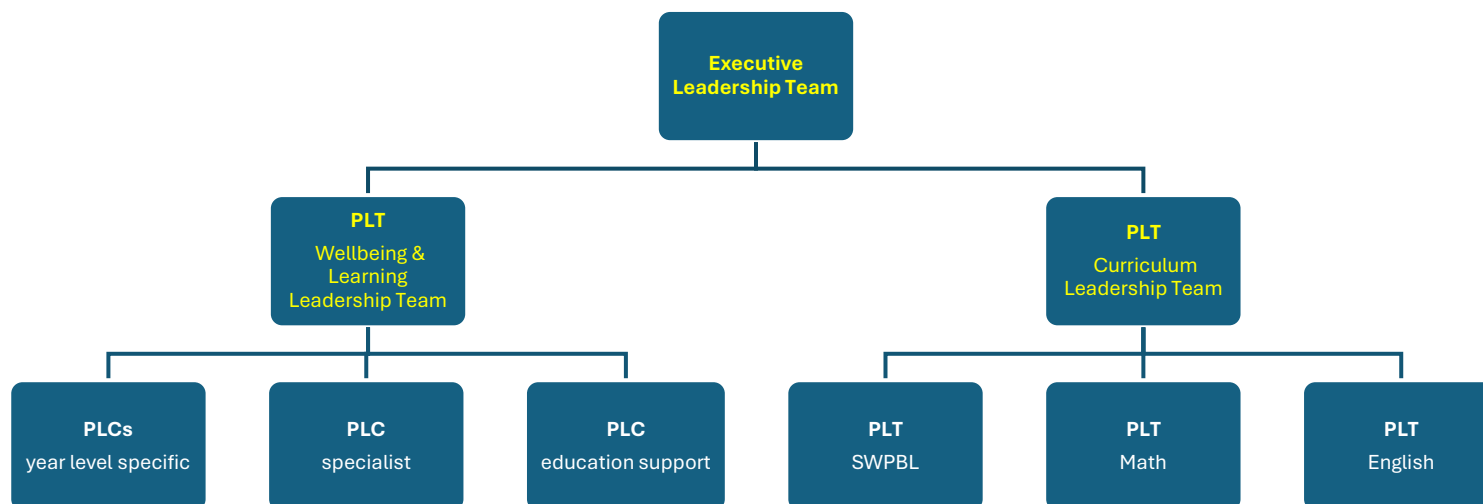


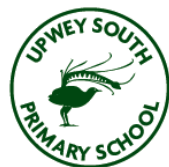
**UPWEY SOUTH**  
Primary School

## 2026- Continuous Improvement Structure



Continuous Improvement Leadership Teams	Leadership Team Members	Summary of Intent
<b>Executive</b> Leadership Team	Principal (x1), Assistant Principal (x2), Business Manager (x1)	Provide strategic direction which drives overall school improvement. Oversee protocols and frameworks which promote school-wide consistency of practice, build data informed practices, strengthen instructional pedagogies.
<b>PLT<sup>2</sup></b> (vertical) Wellbeing & Learning Leadership Team	Principal (x1), Assistant Principal (x2), PLC Year Level Leaders (x5), Specialist Leader (x1)	Operational aspects and collective leadership of respective <b>PLCs</b> <sup>1</sup> , through the lens of school-wide connections, predictability, and consistency.
<b>PLT<sup>2</sup></b> (vertical) Curriculum Leadership Team	Principal (x1), Assistant Principal (x2), SWPBL PLT Leader (x1), Math PLT Leader (x1), English PLT Leader (x1)	A clear and purposeful focus upon curriculum improvement at a school-wide level, achieved through building staff capacity to be responsive to the needs of students.

- <sup>1</sup>**Professional Learning Community (PLC)**- refers to a horizontal community of staff members (*formerly known as year level teams*)
- <sup>2</sup>**Professional Learning Team (PLT)**- refers to a vertical team, consisting of staff members representing horizontal communities (*formerly known as curriculum/culture teams*)

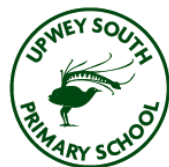


**UPWEY SOUTH**  
Primary School



## Professional Learning Communities (PLCs) Structure

Professional Learning Community	PLC Members	PLC Leader
Foundation	<ul style="list-style-type: none"><li>• Holly Peters- <b>Class FA</b></li><li>• Lisa Dam- <b>Class FB</b></li><li>• Tanya Howell- <b>Class FC</b></li></ul>	Holly Peters
Year One	<ul style="list-style-type: none"><li>• Nikki Perfect- <b>Class 1A</b></li><li>• Kat Jones- <b>Class 1B</b></li></ul>	Nikki Perfect
Year Two	<ul style="list-style-type: none"><li>• Krista Carpenter- <b>Class 2A</b></li><li>• Rebecca Hobson- <b>Class 2B</b></li><li>• Zoe Bates- <b>Class 2C</b></li></ul>	Krista Carpenter
Year Three/Four	<ul style="list-style-type: none"><li>• Michelle De Luca- <b>Class 34A</b></li><li>• Lachlan Prasad- <b>Class 34B</b></li><li>• Julie Hall - <b>Class 34C</b></li><li>• Stacey Bowles – <b>Class 34D</b></li></ul>	Stacey Bowles
Year Five/Six	<ul style="list-style-type: none"><li>• Sian Buddy- <b>Class 56A</b></li><li>• Andrew McFarlane- <b>Class 56B</b></li><li>• Bec Crawford- <b>Class 56C</b></li></ul>	Bec Crawford
Specialist	<ul style="list-style-type: none"><li>• Penelope Lang- <b>Performing Arts</b></li><li>• Danielle Haines- <b>Visual Arts</b></li><li>• Justin Scicluna- <b>Health/Physical Education</b></li><li>• Hayley Oliver- <b>Science</b></li><li>• Amanda Oakley- <b>LOTE Auslan (F-2)</b></li><li>• Shar Stjerne- <b>LOTE Auslan (3-6)</b></li></ul>	Justin Scicluna



**UPWEY SOUTH**  
Primary School

## School-Wide Structure of Support

School-Wide Structure of Support	Support Staff
Executive Leadership Team	<ul style="list-style-type: none"><li>• Damien Kitch- <b>Principal</b></li><li>• Llewela Humphries- <b>Assistant Principal- Wellbeing and Inclusion</b></li><li>• Melinda Rowe- <b>Assistant Principal- Curriculum and Pedagogy</b></li></ul>
Administration Team	<ul style="list-style-type: none"><li>• Janet Young- <b>Business Manager</b></li><li>• Janette Clarke- <b>Office Manager</b></li><li>• Daniel Nisi- <b>Technical Support Officer</b></li></ul>
Education Support Team	<ul style="list-style-type: none"><li>• Meagan Tustin- <b>Learning Support Officer</b></li><li>• Katie Boxell- <b>Learning Support Officer</b></li><li>• Hellen Lloyd- <b>Learning Support Officer</b></li><li>• Natalie Sargeant- <b>Learning Support Officer</b></li><li>• Amanda Oakley- <b>Learning Tutor (F-2)</b></li><li>• Shar Stjerne- <b>Learning Tutor (3-6)</b></li><li>• Vicky Procyk- <b>School Counsellor</b></li></ul>