



# POP

---



# WHAT IS POP MUSIC

pop music is a style of music made to be catchy, easy to enjoy, and appealing to many people. it usually has simple lyrics, a strong beat and melodies that are easy to remember. Pop songs often talk about everyday feelings like love, fun or friendship, and they're designed to stick in your head. It's the kind of music you often hear on the radio, in shops or on playlists because it's made for a wide audience and is meant to be enjoyable and familiar.

Pop music is also known for constantly changing to match what people enjoy at the moment. New artists, fresh sounds, and modern technology all help shape how pop music evolves. Producers often mix different styles, like electronic beats, hip-hop, rhythms or rock elements, to create something new and exciting.



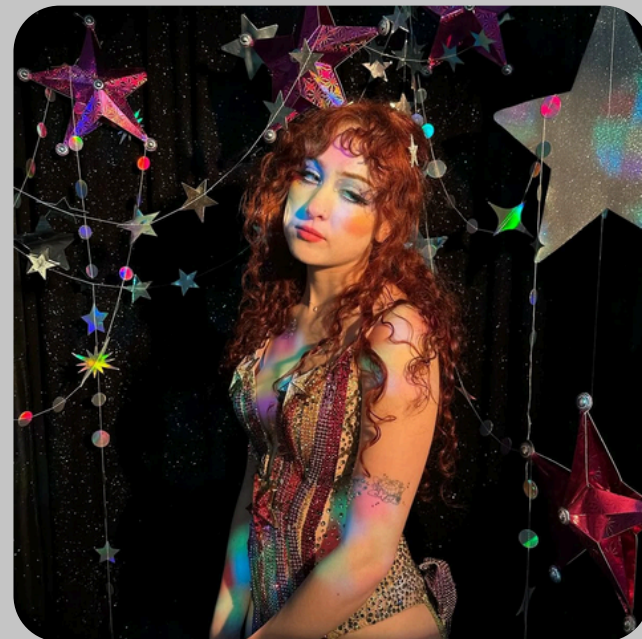
# THE ORIGIN OF POP MUSIC

Pop music first took shape in major cities like New York, Los Angeles and London, where different cultures and music styles mixed together. After World War II, technology like radios and televisions became common, helping new sounds spread quickly. Because these cities were busy, creative and full of young people, pop music grew fast and eventually spread around the world.

Pop music grew quickly in the US and the UK because both places had busy, creative cities where new technology and diverse communities came together. As radios, TVs and record players became common, people could hear new styles more easily, and young audiences helped shape what pop sounded like. This mix of culture, technology and energy made these cities the perfect places for pop to develop and spread.

ME





# MUSICAL ELEMENTS

Pop music usually has a steady beat, catchy rhythms and a memorable melody that sits clearly above the instruments. The sound is bright and smooth, with layers like drums, bass, keyboards and vocals working together. The energy stays moderate and consistent, and the texture becomes slightly thicker in the chorus, making the song feel fuller and more engaging.

Pop music often uses clear, steady rhythms and bright, polished sounds that make the song easy to follow. The melody is usually the main focus, carried by strong vocals supported by instruments like drums, bass and keyboards. The texture stays fairly full throughout, with a slight lift in the chorus to make it feel more energetic and memorable.

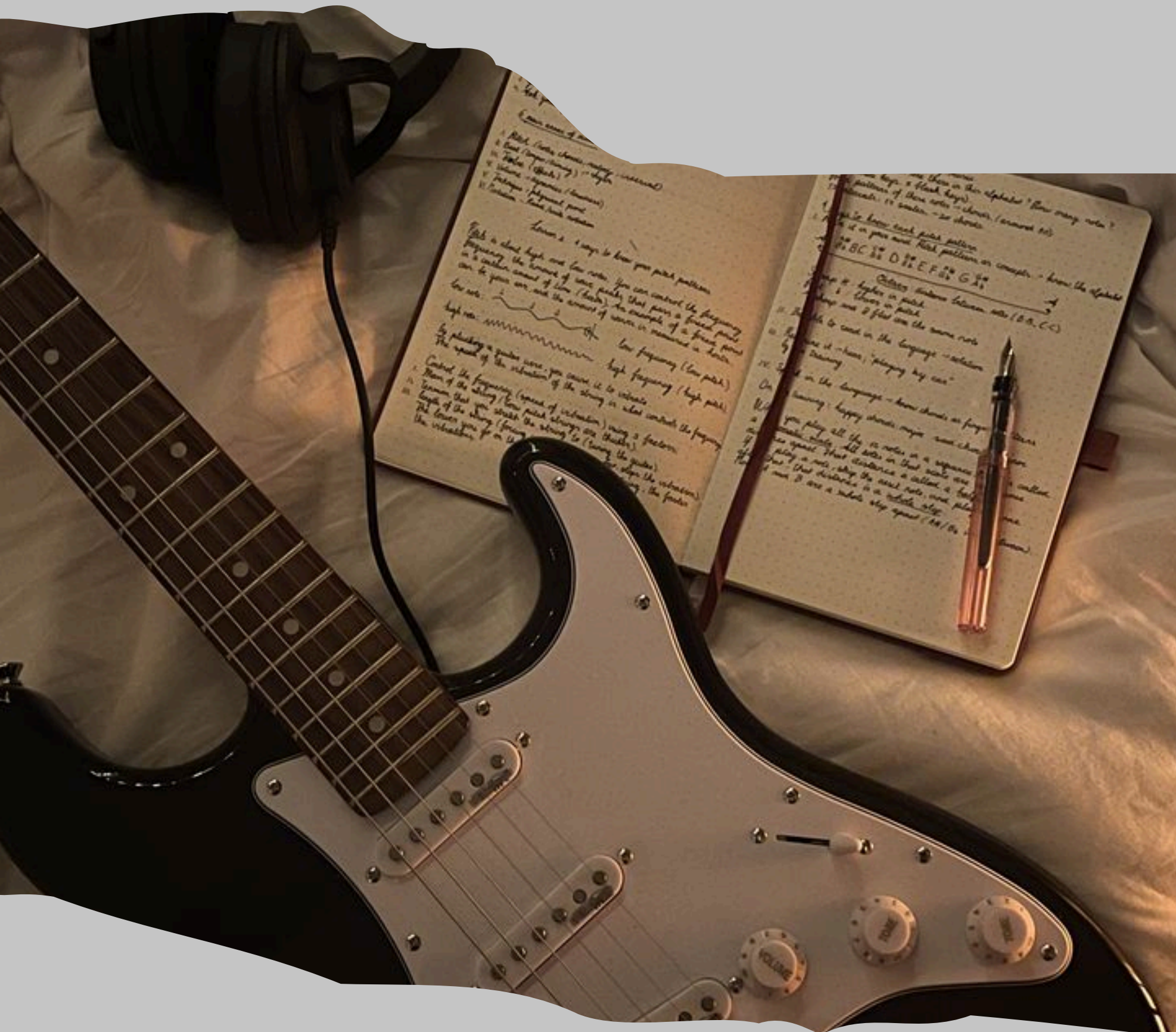


# STAGECRAFT

The performance uses a bold stage setup with the artists positioned at the front, supported by bright fire effects and a clean layout that keeps the focus on them. The lighting is mostly steady, creating an energetic mood, while the choreography is sharp and coordinated. Their strong movement, confident presence and dramatic costumes all work together to make the performance feel powerful and exciting without overwhelming the music.

The stagecraft focuses on strong visuals and confident performance energy. The artists stay near the front, using fire effects, steady lighting and clear choreography to keep the show exciting. Their movement and presence feel bold and controlled, creating a powerful atmosphere even in a simple venue setup.





# INSTRUMENT ROLES

Pop songs use a mix of instruments that each add something different to the overall sound. The drums and percussion keep the beat steady, the bass creates depth and groove, and guitars or keyboards add harmony and texture. Vocals sit on top as the main focus, while extra layers like synths or backing vocals help shape the mood and style of the song.

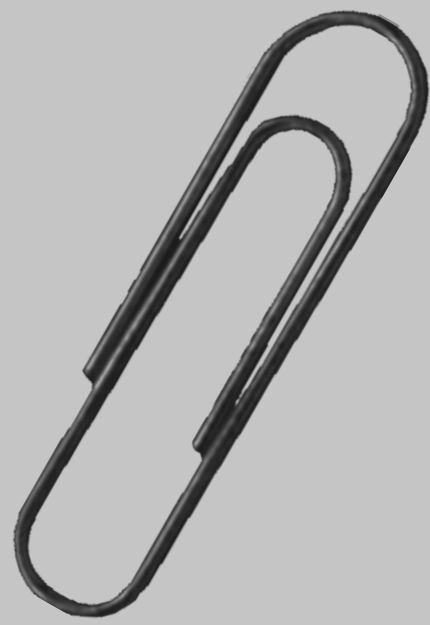
Pop songs often blend different instruments to create a balanced, polished sound. The drums keep everything steady, the bass adds warmth and groove, and guitars or keyboards fill in the harmony. Vocals lead the song, while extra layers like synths or backing vocals help shape the emotion and style without taking over.



# CULTURAL IMPACT

Pop culture creates shared behaviours and identities without having one strict subculture. Fans connect through online communities, trends, choreography and creative expression, while the genre itself represents ideas like individuality, emotion and youth influence. Pop also becomes part of major cultural moments, shaping fashion, language and the way people express themselves across different places and generations.

Pop culture brings people together through shared trends, fan communities and creative expression, while still allowing everyone to have their own identity. Pop fans often connect through online edits, dance challenges and fashion trends, and the genre reflects values like individuality, emotion and youth influence. Because it's so widespread, pop often becomes part of big cultural moments and shapes how people express themselves.



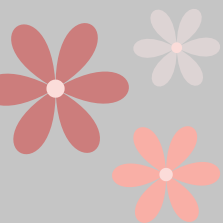
# HOW MY UNDERSTANDING HAS CHANGED

I used to think pop music is just popular music but now i think pop is a catchy, emotional, well-produced style that uses repetition, strong beats and a simple structure to connect with people that also spread worldwide. I also found out how important emotion and storytelling are in pop, and how modern production shapes it's sounds. beyond music itself, I now understand that pop is a global cultural that spreads quickly.



## WHAT I LEARNED

Pop music is something that is simple and has a very catchy style that shows that people actually like. It uses easy melodies, repeated choruses and a kind of strong beat to make song fun to listen to and enjoy. Pop music spreads quickly around the world and often mixes different styles to make different sounds





# SUGGESTED PLAYLIST



- 01 - Olivia Rodrigo - Driver License
- 02 - Sabrina Carpenter - Espresso
- 03 - Chappell Roan - Pink Pony Club
- 04 - Taylor Swift - Cruel Summer
- 05 - Dua Lipa - Don't Start Now
- 06 - Olivia Dean - So Easy (To Fall In Love)
- 07 - Lewis Capaldi - Bruises
- 08 - Julia Michaels - Issues
- 09 - Zara Larsson - Lush Life
- 10 - Ed Sheeran - Perfect
- 11 - Noah Kahan - Stick Season
- 12 - Adele - When We Were Young
- 13 - Olivia Rodrigo - Good 4 U
- 14 - Chappell Roan - HOT TO GO!
- 15 - Arianna Grande - Thank U, Next

