

Safety around schools

A road safety initiative



Help us ensure the safety of children, pedestrians and motorists around our streets and schools.

Keeping children safe

Speed zones, pedestrian crossings and parking restrictions around schools are there to improve the movement of traffic during peak times and maximise safety for children and all road users.

You can help by obeying road rules and allowing enough time to drop off and pick up of your child.

Children are vulnerable and subject to acting on impulse. It is vital that adults lead by example and set good road safety practices when crossing roads.

Five tips around schools:

1. Allow enough time to take your child to the school gate safely. Consider parking a few streets away and walking your child the rest of the way to school.
2. Obey all traffic control signs and the directions of the school crossing supervisor.
3. Plan with your child as to when and where they can be picked up or dropped off safely. Find locations where it is safe to get out of the car and cross the road.
4. Where available, always cross at a supervised school crossing even if it is further away,
5. Never call children from across the road.



Road rules, parking and traffic signs are there to protect the safety of all pedestrians and road users.

Observe parking signs:



No stopping

No stopping zones cannot be used at any time for stopping, parking, dropping off or picking up students/passengers. These zones can also be marked by yellow lines.



No parking

Often located in designated school drop off and pick up areas. The driver must remain with the vehicle at all times.



Disabled parking

This parking space can only be used by vehicles displaying a blue disabled parking permit. Vehicles without a permit cannot park here at all, even to drop off/pick up.



Bus zones

Bus zones are for public or private bus use only. The driver of a private vehicle is not allowed to stop in a bus zone at any time.

Remember:

It is an offence to:

- Double park by stopping next to a legally parked vehicle, even for a short time or to drop off/pick up passengers.
- Stop or park within 10 metres of an intersection or corner that doesn't have traffic lights.
- Stop or park across or in a bus zone.
- Stop in the middle of a road to drop off or pick up passengers.

How can Council help?

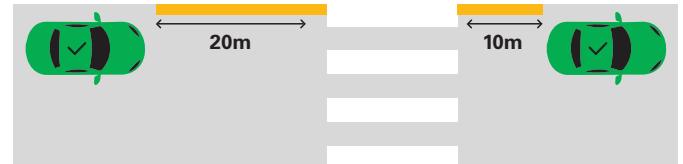
Council's Local Laws Officers regularly patrol streets and roads around Maroondah schools at peak school times.

If you have questions about restrictions, traffic control or enforcement, please contact Council.

Common parking rules:

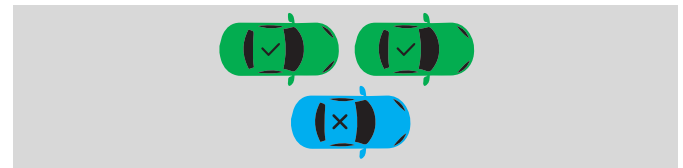
Pedestrian crossings

A vehicle must not stop 20 metres before or 10 metres after a school crossing, which may have no stopping restrictions or yellow line markings along the kerb. This ensures children can be clearly seen by approaching vehicles.



Double parking

Vehicles must not stop on a road adjacent to another vehicle to drop off or pick up passengers. Double parking forces other vehicles to divert, causing traffic congestion and line of sight issues, which can cause accidents with pedestrians or vehicles.



Driveways and yellow lines

A vehicle is allowed to stop on or across a driveway to pick up or drop off passengers, but the driver must remain within the vehicle, not stop longer than 2 minutes or block any footpaths. Areas marked with a yellow line are similar to No Stopping Areas, a driver must not park any part of a vehicle next to a yellow line.



Maroondah City Council takes the safety of children around schools seriously. Council's Local Laws Officers can and will issue fines.



1300 88 22 33 or 9298 4598
www.maroondah.vic.gov.au