



Entry to Medicine

2024

Learn all about the courses and
application process to study
medicine in Australia

studyworkgrow

Entry to Medicine

A guide to medical programs in Australia for high school students. Created by Study Work Grow Pty Ltd in 2024.

EDITION 6

The programs in this guide may be subject to change at any time. In our experience, programs may change at short notice, and you should always check directly with the provider before applying for medical programs. We have verified the information in this guide, but in some cases the information may differ from that provided on third party websites or printed material.

In this guide...

WHAT YOU NEED TO KNOW

COMMON TERMS & ABBREVIATIONS

YOUR STUDY OPTIONS

THE PATH TO BECOMING A DOCTOR

THE ASSESSMENT PROCESS

THE UCAT

CREATING A PLAN B

UNDERSTANDING FEES & PLACES

KEY DATES

DIRECT ENTRY PROGRAMS

SEPARATE ENTRY PROGRAMS

POSTGRADUATE PROGRAMS

What you need to know about studying medicine

MEDICINE IS COMPETITIVE

But don't let that stop you. We need lots of doctors (even more so than just a few years ago), so if you've done the work and are prepared, then you'll stand a good chance.

PREPARING YOUR APPLICATION CAN TAKE TIME

If you're in Year 12 now, then you need to get your preparation underway fast. If you're in Year 10 or 11, start thinking about it now so there's not as much to prepare in Year 12. You can expect to undergo testing, interviews, submit essays, and more, all on top of the normal university application process.

YOUR DEGREE IS JUST THE FIRST STEP

Graduating from a medical program is great, but you'll still need to undergo years of training before you can practice on real patients without supervision. Medical school is followed by an Internship (usually one year), then a Residency of one or more years.

After that there's even more training, experience, and exams - you could also do your Fellowship and/or PhD and become a qualified GP, Physician, Surgeon, or Specialist.



Common terms and abbreviations

MBBS

Bachelor of Medicine, Bachelor of Surgery. This is the title of the primary degree conferred upon graduates of many medical programs in Australia

MD

Doctor of Medicine

MChD

Doctor of Medicine and Surgery

UCAT

The University Clinical Aptitude Test

MMI

Multiple Mini Interview

Casper

Computer Based Assessment for Sampling Personal Characteristics

GAMSAT

Graduate Australian Medical School Admissions Test

GEMSAS

Graduate Entry Medical School Admission System

ATAR

Australian Tertiary Admission Rank

SR

Selection Rank

Your study options

The Australian Medical Association (AMA) state that:

“All medical degrees offered by medical schools in Australia are equivalent for the purposes of commencing practice as a doctor.”

This means that it doesn't matter which school you graduate from, or whether you graduate with an MBBS (Bachelor of Medicine, Bachelor of Surgery) or a Doctor of Medicine (MD or MChD), you will be qualified to start your internship.

YOUR FIRST OPTION...

Is to commence one of the 5 to 7-year undergraduate entry degrees once you finish school. There are currently 21 programs in Australia that offer this direct option.

If you don't make it into one of these programs (and remember, there are limited places), don't worry - you can still become a doctor.

THE SECOND PATHWAY...

Is to complete another undergraduate degree, then apply for a postgraduate medical program. Your first degree could be in nearly any field, depending on the requirements of the postgraduate program.

This pathways gives you opportunities to try out other careers before you commit to medicine, and have a Plan B option to fall back on.

The path to becoming a doctor

ENTRY TO MEDICINE

1

Finish high school. You'll probably need to complete pre-requisite subjects such as English, Mathematics, Biology, and Chemistry.

2

Study either a direct entry medical program, or a separate undergraduate degree plus a graduate medical program.

3

Receive provisional registration and work as an intern for 12 months. You will complete 3 mandatory and 2 non-core rotations.

4

Congratulations! You're now a doctor. You can either start practising general medicine, or choose a specialisation and train further.

The assessment process

The assessment process is different for undergraduate programs and postgraduate programs, and we focus on undergraduate programs in this guide.

There are different components used by each university, and each of these has a different weighting in their individual assessment process.

Understanding the assessment process is vital for success, so once you've chosen some potential programs, do your research and learn about each component they use and what you need to do.

Some of the programs require you to apply directly to the university as well as (or instead of) applying through your state's Tertiary Admissions Centre, and there are a range of deadlines. Other programs wait for ATAR release day and then invite applicants for interviews in December and January.

Be aware that application deadlines may be different for medicine, and you may not be able to apply or change your preferences after the on-time application deadline.

ALL DIRECT-ENTRY PROGRAMS REQUIRE AN ATAR

The minimum ATAR/SR requirements vary between programs. The lowest score to actually receive an offer can also be higher than the posted minimum requirements, depending on the quality of the applicants and other factors.

15 OF THE PROGRAMS REQUIRE A UCAT SCORE

You'll need to register to sit the UCAT in the year before you want to start your degree. Read more about the UCAT on the next page.

16 OF THE PROGRAMS ASK YOU TO ATTEND AN INTERVIEW

Usually these interviews are in the form of a Multiple Mini Interview, but the actual structure and questions can vary.

THERE CAN BE OTHER REQUIREMENTS TOO

You may also need to participate in other testing, like the Casper test or psychometric testing. Some programs require you to submit an essay, statement, or portfolio as well.

The UCAT

Some of the programs require you to sit the University Clinical Aptitude Test (or UCAT) before you can apply. So what exactly is the UCAT?

Basically, it's a test that determines whether or not you have the right abilities and qualities to work as a doctor. Your UCAT results are used in combination with your academic results (and occasionally other test results) to determine whether you'll progress to the next stage of applications (usually the interview stage) or receive an offer.

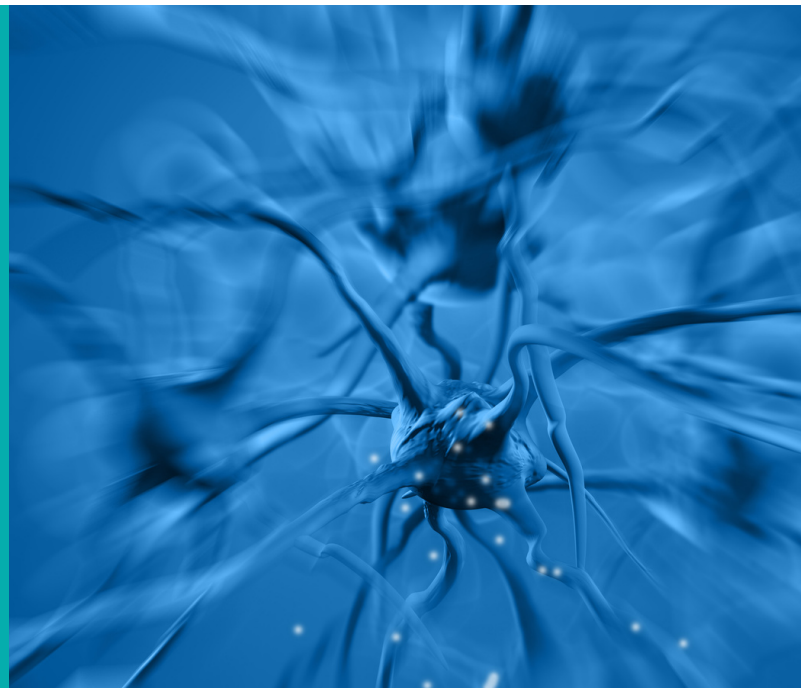
The test runs for two hours and is computer-based. There are five separate sections to the UCAT:

- Verbal Reasoning
- Decision Making
- Quantitative Reasoning
- Abstract Reasoning
- Situational Judgement

Make sure you read the entry requirements for any course you're interested in to see if you'll need to take the UCAT, as you will need to sit it before applications close.

UCAT 2024 KEY DATES

- 5 March** - Bookings open
- 10 May** - Concession application deadline
- 17 May** - Booking deadline
- 31 May** - Late booking deadline
- 10 June** - Cancellation deadline
- 1 July** - Testing begins
- 9 August** - Last testing date
- Early September** - Results delivered



Creating a Plan B

You're probably not going to want to hear this, but every year students with brilliant ATARs, UCAT scores, and application essays miss out on getting into medicine.

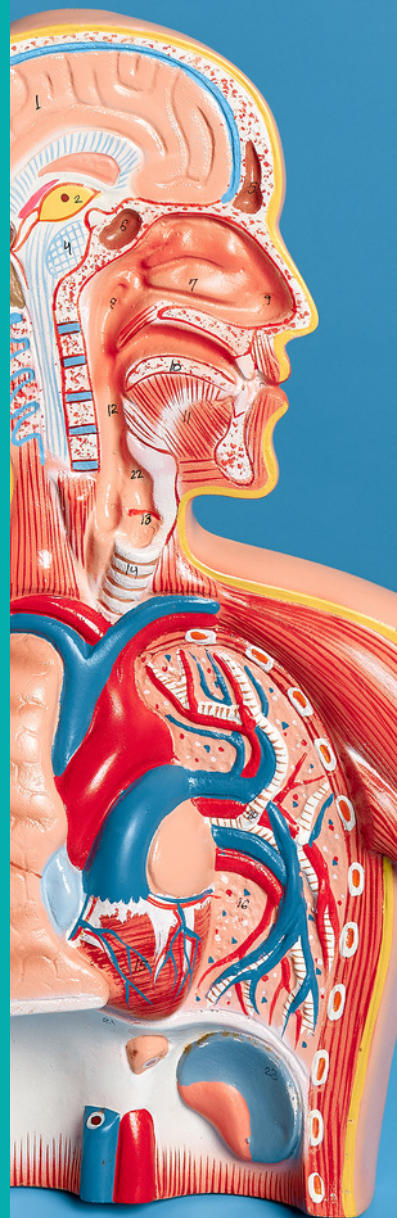
Some of the programs have thousands of applicants for a handful of spots. Take the University of Sydney for example - they receive thousands of applicants each year for just 30 places. You can do everything right, and still not get in this time around. Which is why a Plan B is a great idea.

Your Plan B will most likely be an alternative path to medicine, such as through a graduate program. But we also recommend that your Plan B includes career options other than 'doctor', should you not eventually get into medicine.

Luckily, many graduate medical programs (i.e. ones you can only get into once you already have a degree) don't put limits on the type of degree you can have. This means that you can apply with a Bachelor of Medical Science, Nursing, Physiotherapy, Accounting, or IT.

Many students who don't get in choose a Bachelor of Medical Science, but these courses are often filled with highly talented students who also just missed out on medicine. This could make it harder to get a good GPA, and there are often limited career prospects for graduates should you not eventually get into a graduate medical program.

So, you should also consider something other than Medical Science for your undergraduate degree if there's something else you're interested in. That way, you'll have a solid backup career option with good job prospects, just in case you don't get into medicine.



Understanding fees and places

There are three types of places for domestic (i.e. not international) medical students in Australia; Commonwealth Supported Places (CSPs), Bonded Places (BPs), and Full Fee-Paying Places (FFPs).

Public universities are not able to offer FFPs for domestic undergraduate students, so this means that as a domestic undergraduate student you won't be able to access a FFP unless you graduate from another degree then start a postgraduate medical program.

It's also worth considering that the Australian Government has guaranteed an internship place for all graduates with a CSP or Bonded Place, so if you graduate from one of these programs, you'll be well on your way to working as a doctor.

COMMONWEALTH SUPPORTED PLACES

These are places where the Government pays part of your fees. It won't cover all of the fees, but it will cover a lot of them and you don't have to pay it back. You could also get a loan to cover the remaining fees (called a HECS-HELP loan).

To get one of these places you need to be eligible, which means you need to be an Australian citizen. Some people from New Zealand or on Permanent Visas can also be eligible depending on other criteria.

BONDED PLACES

28.5% of all CSPs are now required to also be Bonded Places.

Bonded Places come with the same degree entry criteria as other CSPs, and you do not receive any additional financial assistance (other than the usual fee reduction you get from your CSP) or scholarships.

If you agree to the Bonded Place, you will need to work in a regional, rural or remote location for a period of 3 years within 18 years of finishing your degree.

Understanding fees and places (cont.)



FULL FEE PAYING PLACES

In some circumstances, you may be offered a full-fee paying place.

Some of the medical programs offered by private universities or classified as postgraduate degrees (such as Macquarie's Doctor of Medicine) make some or all places full-fee paying.

If you are offered an FFP, the cost of your degree will be higher than if you were offered a CSP - in some cases it can cost up to \$60,000 each year.

Check with your chosen university for their individual fee program.

HECS AND FEE-HELP

HECS-HELP and FEE-HELP are loan schemes from the government that you can use to pay for your university fees. HECS-HELP is available to students in CSPs, while FEE-HELP is available to students in FFPs.

The HELP loan limit for medical students is \$174,998 (as of Feb 2024 - note that the limit may change each year).

The limit is combined between all HELP loans, so if you need to study more than one course, they all count towards the same limit.

If you repay part or all of your HELP loan, you can then borrow more if you need to.

Closing dates

The majority of undergraduate (school-leaver) programs close on the same day as general state-based university applications (i.e. through UAC, or VTAC etc.). This is normally around the end of September. Some programs have not finalised their application dates yet, but we will be updating this guide throughout the year.

Programs with direct application options may have dates which open earlier and close later, but as the universities may change these dates at their discretion we recommend checking directly with the university when you go to apply.

UCAT ANZ

Closes - 17 May 2024

Testing begins - 1 July 2024

ANU

Min ATAR - 95

Closes - 8 April 2024

Bond

Min ATAR - 95

Closes - TBC

CDU

Min ATAR - 90

Closes - TBC

CQUniversity & UQ

Min ATAR - 95

Closes - TBC

Curtin

Min ATAR - 95

Closes - TBC

Flinders

Min ATAR - 95

Closes - TBC

Griffith

Min ATAR - 99.80

Closes - TBC

JCU

Min ATAR - 91.65

Closes - 30 September 2024

La Trobe & Uni Melb

Min ATAR - 80

Closes - 1 November 2024

ENTRY TO MEDICINE

Monash

Min ATAR - 92.15

Closes - TBC

Newcastle & UNE

Min ATAR - 94.30

Closes - 29 Sept

University of Adelaide

Min ATAR - 90

Closes - TBC

Uni Melb

Min ATAR - 99.90

Closes - TBC

UNSW

Min ATAR - 96

Closes - TBC

UQ

Min ATAR - 95

Closes - TBC

UniSQ

Min ATAR - 95

Closes - TBC

UniSC & Griffith

Min ATAR - 99.80

Closes - TBC

University of Sydney

Min ATAR - 99.95

Closes - TBC

UTAS

Min ATAR - 95

Closes - TBC

UWA

Min ATAR - 98

Closes - TBC

WSU & Charles Sturt

Min ATAR - 95.50

Closes - TBC



ENTRY TO MEDICINE

Direct entry programs

NEW SOUTH WALES

VICTORIA

QUEENSLAND

SOUTH AUSTRALIA

WESTERN AUSTRALIA

AUSTRALIAN CAPITAL TERRITORY

NORTHERN TERRITORY

TASMANIA

These programs are designed for school-leavers and give you the skills and knowledge you need to become an intern.

studyworkgrow

University of New South Wales

Bachelor of Medical Studies & Doctor of Medicine

The Bachelor of Medical Studies and Doctor of Medicine at UNSW is the most popular first preference choice in the state for school leavers.

Apply directly to UNSW and through UAC, sit the UCAT in Year 12, and attend an interview if invited.

SEE FULL ENTRY AND APPLICATION DETAILS HERE

QUICK FACTS

ATAR	96
Duration	6 years
UCAT?	Yes
Interview?	Yes
Closing date	TBC
Locations	Sydney

University of Newcastle & University of New England

Joint Medical Program

The Joint Medical Program is run jointly by the University of Newcastle and the University of New England, allowing you to access a world-class education in regional areas.

Apply directly to Newcastle/UNE and through UAC, sit the UCAT in Year 12, and attend an assessment interview if invited.

SEE FULL ENTRY AND APPLICATION DETAILS HERE

QUICK FACTS

ATAR	94.30
Duration	5 years
UCAT?	Yes
Interview?	Yes
Closing date	TBC
Locations	Newcastle Armidale

University of Sydney

Bachelor of Arts / Bachelor of Science & Doctor of Medicine

The University of Sydney allows school leavers who have achieved exceptional results to study a 3-year undergraduate science or arts degree followed by the 4-year Doctor of Medicine.

Apply through UAC, and attend an online assessment process and panel discussion if invited.

SEE FULL ENTRY AND APPLICATION DETAILS HERE

QUICK FACTS

ATAR	99.95
Duration	7 years
UCAT?	No
Interview?	Yes
Closing date	TBC
Locations	Sydney

Western Sydney University & Charles Sturt University

Joint Program in Medicine

Western Sydney and Charles Sturt's Joint Program in Medicine allows you to complete your medical training straight out of high school, either in Western Sydney or Orange.

Apply through UAC, sit the UCAT in Year 12, and complete an interview and Medical Admission Questionnaire if invited.

SEE FULL ENTRY AND APPLICATION DETAILS HERE

QUICK FACTS

ATAR	95.50
Duration	5 years
UCAT?	Yes
Interview?	Yes
Closing date	TBC
Locations	Sydney Orange

La Trobe University & University of Melbourne Bachelor of Biomedical Science (Medicine) & Doctor of Medicine

La Trobe's Bachelor of Biomedical Science (Medicine) provides a guaranteed pathway into the University of Melbourne's Doctor of Medicine (Rural Pathway).

Apply through VTAC and attend an interview if invited. Finish the undergraduate degree with a WAM of 70 to progress into the MD.

SEE FULL ENTRY AND APPLICATION DETAILS HERE

QUICK FACTS

ATAR	80
Duration	7 years
UCAT?	No
Interview?	Yes
Closing date	1 November
Locations	Wodonga Bendigo Shepparton

Monash University Bachelor of Medical Science & Doctor of Medicine

Monash's Bachelor of Medical Science and Doctor of Medicine provides direct entry from high school. The first 2 years are campus based and the final 3 years are hospital and community based.

Apply through VTAC, sit the UCAT in Year 12, and complete an interview if invited.

SEE FULL ENTRY AND APPLICATION DETAILS HERE

QUICK FACTS

ATAR	92.15
Duration	5 years
UCAT?	Yes
Interview?	Yes
Closing date	30 September
Locations	Melbourne Bendigo

University of Melbourne

Doctor of Medicine - Guaranteed Pathways

There are two guaranteed pathways to the Doctor of Medicine at Melbourne for school leavers:

Receive an ATAR of 99.90, apply for guaranteed entry to the MD through the Chancellor's Scholars Program, and complete your undergraduate degree, OR; receive an ATAR between 99 and 99.85 and complete your undergraduate course with a WAM of 75 or higher.

Apply for your undergraduate degree through VTAC. You will still need to participate in an interview before receiving an offer to the MD. You do not need to sit the GAMSAT or apply through GEMSAS.

SEE FULL ENTRY AND APPLICATION DETAILS HERE

QUICK FACTS

ATAR	99
Duration	7 years
UCAT?	No
Interview?	Yes
Closing date	TBC
Locations	Melbourne

Bond University

The Medical Program

Due to Bond's tri-semester structure, graduating students will have the advantage of entering the workforce as a Doctor in only 14 semesters.

Apply through QTAC, and attend psychometric testing and an interview if invited.

SEE FULL ENTRY AND APPLICATION DETAILS HERE

QUICK FACTS

ATAR	96
Duration	4 years
UCAT?	No
Interview?	Yes
Closing date	TBC
Locations	Gold Coast

Central Queensland University

Bachelor of Medical Science (Pathway to Medicine) & Doctor of Medicine

Designed for school leavers, CQUniversity provides a provisional entry pathway into UQ's regionally-based Doctor of Medicine.

Apply through QTAC, sit the UCAT in Year 12, and complete an interview if invited. Completion of the degree within 3 years and with a minimum GPA of 5.0 will provide direct entry into UQ's MD.

SEE FULL ENTRY AND APPLICATION DETAILS HERE

QUICK FACTS

ATAR	95
Duration	7 years
UCAT?	Yes
Interview?	Yes
Closing date	TBC
Locations	Bundaberg Rockhampton

Griffith University

Bachelor of Medical Science & Doctor of Medicine

The Bachelor of Medical Science, designed for high-achieving school leavers, provides the opportunity to progress directly into the Doctor of Medicine.

Apply through QTAC and sit the UCAT in Year 12. Completion of the Bachelor of Medical Science with a GPA of at least 5.5 will see graduates gain seamless entry into the Doctor of Medicine.

SEE FULL ENTRY AND APPLICATION DETAILS HERE

QUICK FACTS

ATAR	99.80
Duration	6 years
UCAT?	Yes
Interview?	No
Closing date	TBC
Locations	Brisbane Gold Coast

James Cook University

Bachelor of Medicine, Bachelor of Surgery

JCU's Bachelor of Medicine, Bachelor of Surgery is the only 6-year undergraduate medical course offered in Northern Australia.

Apply through QTAC and direct to JCU, and complete an interview if invited.

SEE FULL ENTRY AND APPLICATION DETAILS HERE

QUICK FACTS

ATAR	91.85
Duration	6 years
UCAT?	No
Interview?	Yes
Closing date	30 September
Locations	Cairns Townsville

University of Queensland

Doctor of Medicine - Provisional Entry

UQ provides Provisional Entry for school leavers to their Doctor of Medicine.

Apply through QTAC, sit the UCAT, and attend an interview. Complete a bachelor degree at UQ within the minimum specified time with a GPA of 5.00 and complete any required MD prerequisite subjects in order to progress to the MD.

SEE FULL ENTRY AND APPLICATION DETAILS HERE

QUICK FACTS

ATAR	95
Duration	7 years
UCAT?	Yes
Interview?	Yes
Closing date	TBC
Locations	Brisbane

University of Southern Queensland

Bachelor of Biomedical Sciences (Medicine Pathway) & Doctor of Medicine

UniSQ's Bachelor of Biomedical Sciences (Medicine Pathway) prepares you for entry to UQ's Doctor of Medicine.

Apply through QTAC, sit the UCAT in Year 12, and attend an interview if required. Entry to UQ's Doctor of Medicine is dependent on achieving a minimum GPA of 5.0 and completion of the degree within 3 years.

SEE FULL ENTRY AND APPLICATION DETAILS HERE

QUICK FACTS

ATAR	95
Duration	7 years
UCAT?	Yes
Interview?	Yes
Closing date	TBC
Locations	Toowoomba

University of the Sunshine Coast & Griffith University

Bachelor of Medical Science & Doctor of Medicine

UniSC's Bachelor of Medical Science provides provisional direct entry (subject to entry requirements) to Griffith's Doctor of Medicine.

Apply through QTAC. Provisional entry to Griffith's Doctor of Medicine is dependent on a cumulative GPA of at least 5.0 and a minimum Pass grade in MED202.

SEE FULL ENTRY AND APPLICATION DETAILS HERE

QUICK FACTS

ATAR	99.80
Duration	7 years
UCAT?	Yes
Interview?	No
Closing date	TBC
Locations	Sunshine Coast

Flinders University

Bachelor of Clinical Sciences, Doctor of Medicine

Flinders' double degree program enables school leavers without an undergraduate degree to pursue a career in medicine.

Apply through SATAC and sit the UCAT in Year 12. This course is only available to school leavers.

SEE FULL ENTRY AND APPLICATION DETAILS HERE

QUICK FACTS

ATAR	95
Duration	6 years
UCAT?	Yes
Interview?	No
Closing date	TBC
Locations	Adelaide

University of Adelaide

Bachelor of Medical Studies & Doctor of Medicine

Upon completion of the Bachelor of Medical Studies, you'll gain direct entry into the University of Adelaide's Doctor of Medicine.

Apply through SATAC, sit the UCAT in Year 12, and attend an interview if required.

SEE FULL ENTRY AND APPLICATION DETAILS HERE

QUICK FACTS

ATAR	90
Duration	6 years
UCAT?	Yes
Interview?	Yes
Closing date	TBC
Locations	Adelaide

Curtin University

Bachelor of Medicine, Bachelor of Surgery

Curtin University offers the only undergraduate entry medical degree program in Western Australia.

Apply through TISC, submit a predicted ATAR form, sit the UCAT and Casper test in Year 12, and attend an interview if invited.

SEE FULL ENTRY AND APPLICATION DETAILS HERE

QUICK FACTS

ATAR	95
Duration	5 years
UCAT?	Yes
Interview?	Yes
Closing date	TBC
Locations	Perth

University of Western Australia

Medicine via Biomedicine (Specialised)

School leaver entry in the MD is conditional upon successful completion of UWA's Bachelor of Biomedicine (Specialised) with the Integrated Medical Sciences and Clinical Practice major, and achieving a minimum selection GPA of 5.5 within the first two years of the Bachelor's degree.

Apply through TISC, sit the UCAT in Year 12, and attend an interview if invited.

SEE FULL ENTRY AND APPLICATION DETAILS HERE

QUICK FACTS

ATAR	98
Duration	6 years
UCAT?	Yes
Interview?	Yes
Closing date	TBC
Locations	Perth

Australian National University

Tuckwell Scholarship to Medicine Pathway

Complete a Direct Application and a Tuckwell Scholarship Stage 1 Application. Declare an interest in studying medicine in all three stages of the application process. Completion of an undergraduate degree at ANU is mandatory prior to commencing the MChD.

Scholars in the Tuckwell-MChD pathway are not required to apply through GEMSAS, sit the GAMSAT or undertake an additional interview prior to entering the MChD.

SEE FULL ENTRY AND APPLICATION DETAILS HERE

QUICK FACTS

ATAR	95
Duration	7 years
UCAT?	No
Interview?	Yes
Closing date	8 April
Locations	Canberra

Charles Darwin University & Flinders University

NT Medical Program

The Bachelor of Clinical Sciences course is a direct pathway for CDU students to study medicine, on campus in Darwin. This course is part of a double degree with the Northern Territory Medical Program (NTMP) offered by Flinders University.

Apply through SATAC, and sit the UCAT in Year 12. Priority is given to Indigenous and NT residents. You must pass all units and gain a minimum GPA of 5.0 in the first 2 years of the course to progress to the MD.

SEE FULL ENTRY AND APPLICATION DETAILS HERE

QUICK FACTS

ATAR	90
Duration	6 years
UCAT?	Yes
Interview?	No
Closing date	TBC
Locations	Darwin

University of Tasmania

Bachelor of Medical Science & Doctor of Medicine

The 5-year Bachelor of Medical Science and Doctor of Medicine will provide students with the knowledge, skills and attitudes required to undertake supervised practice as interns. It is the only medical program available to study in Tasmania.

Apply direct to UTAS, and sit the UCAT in Year 12.

SEE FULL ENTRY AND APPLICATION DETAILS HERE

QUICK FACTS

ATAR	95
Duration	5 years
UCAT?	Yes
Interview?	No
Closing date	TBC
Locations	Hobart



ENTRY TO MEDICINE

Separate entry programs

AUSTRALIAN NATIONAL UNIVERSITY

MACQUARIE UNIVERSITY

UNIVERSITY OF NOTRE DAME

UNIVERSITY OF WOLLONGONG

These programs give you a clear and direct pathway through to becoming a doctor, but you will need to apply through a competitive selection process to gain admission to the graduate portion of the program.

You could receive benefits through this pathway that other graduate applicants won't receive, but entry is NOT guaranteed.

studyworkgrow

Australian National University

Bachelor of Health Science / Bachelor of Philosophy (Honours) - Science & Doctor of Medicine and Surgery

The Bachelor of Health Science and Bachelor of Philosophy (Honours) - Science both offer a pathway to the MChD without having to sit the GAMSAT.

Apply through UAC. You are eligible to apply for entry into the MChD after meeting course completion requirements and attending an interview.

SEE FULL ENTRY AND APPLICATION DETAILS HERE

QUICK FACTS

ATAR	85 / 99
Duration	7 years
GAMSAT?	No
Interview?	Yes
Closing date	30 July
Locations	Canberra

Macquarie University

Bachelor of Clinical Science & Doctor of Medicine

The Bachelor of Clinical Science is designed to be the ideal preparation for the Macquarie MD and other graduate-entry medicine programs.

Apply through UAC. Upon completion of the Bachelor of Clinical Science, apply through GEMSAS to the MD, sit the GAMSAT, and attend an interview if required.

SEE FULL ENTRY AND APPLICATION DETAILS HERE

QUICK FACTS

ATAR	90
Duration	6 years
GAMSAT?	Yes
Interview?	Yes
Closing date	TBC
Locations	Sydney

University of Notre Dame

Pre-Medicine Certificate & Doctor of Medicine

The Pre-Medicine Certificate is designed to prepare students who wish to apply for the Doctor of Medicine. You study 4 subjects alongside your undergraduate degree.

Completion of the Pre-Medicine Certificate won't guarantee entry to the MD, but if you meet the GPA and GAMSAT scores you'll progress automatically to the interview stage.

SEE FULL ENTRY AND APPLICATION DETAILS HERE

QUICK FACTS

ATAR	90
Duration	7 years
GAMSAT?	Yes
Interview?	Yes
Closing date	TBC
Locations	Fremantle

University of Wollongong

Bachelor of Pre-Medicine, Science and Health & Doctor of Medicine

The Bachelor of Pre-Medicine, Science and Health is a three-year undergraduate degree providing a solid foundation towards graduate medicine. There is no guaranteed direct entry into the MD.

Apply through UAC. Students who complete the degree with a GPA of at least 6.5 are guaranteed an interview for admission to the MD if they meet the minimum entry requirements for all other selection criteria.

SEE FULL ENTRY AND APPLICATION DETAILS HERE

QUICK FACTS

ATAR	90
Duration	7 years
GAMSAT?	Yes
Interview?	Yes
Closing date	TBC
Locations	Wollongong

ENTRY TO MEDICINE

Postgrad programs

AUSTRALIAN NATIONAL UNIVERSITY

FLINDERS UNIVERSITY

GRIFFITH UNIVERSITY

MACQUARIE UNIVERSITY

UNIVERSITY OF MELBOURNE

UNIVERSITY OF NOTRE DAME

UNIVERSITY OF QUEENSLAND

UNIVERSITY OF SYDNEY

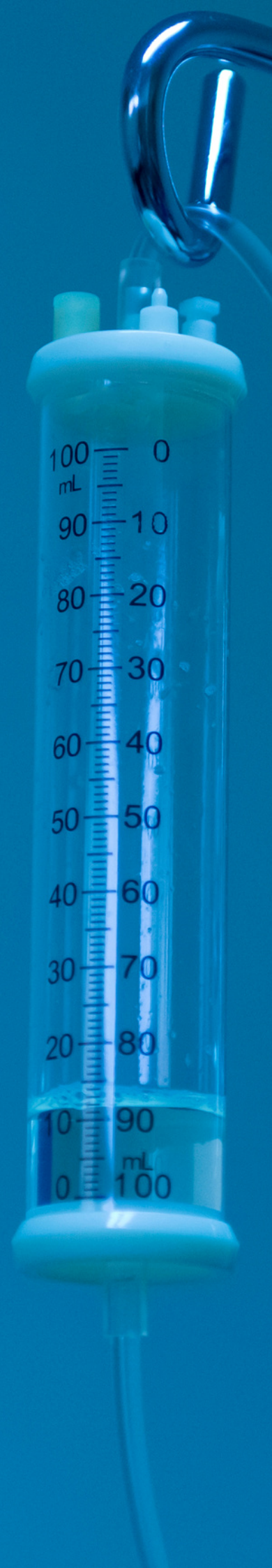
UNIVERSITY OF WESTERN AUSTRALIA

UNIVERSITY OF WOLLONGONG

DEAKIN UNIVERSITY

These universities have medical programs that require you to have an undergraduate degree in order to apply. There are suggested paths you can take to increase your chances of gaining admission into the postgraduate course, but nothing is guaranteed.

studyworkgrow



Australian National University

Doctor of Medicine and Surgery

The Doctor of Medicine and Surgery is a comprehensive and varied four year course for graduate students looking to enter the rewarding field of medicine.

Sit the GAMSAT, apply through GEMSAS, and attend an interview. There are no preferred Bachelor degrees or prerequisite subjects for entry to the program.

SEE FULL ENTRY AND APPLICATION DETAILS HERE

QUICK FACTS

GPA	5.0
Duration	4 years
GAMSAT?	Yes
Interview?	Yes
Closing date	31 May
Locations	Canberra

Flinders University

Doctor of Medicine

Flinders University offers graduate entry to the MD in Adelaide and the Northern Territory, providing an alternative to the traditional pathway from secondary school to an undergraduate medical course.

Sit the GAMSAT and apply directly to Flinders. Aboriginal and/or Torres Strait Islander applicants are given preference when applying for the MD in Darwin.

SEE FULL ENTRY AND APPLICATION DETAILS HERE

QUICK FACTS

GPA	5.0
Duration	4 years
GAMSAT?	Yes
Interview?	Yes
Closing date	TBC July
Locations	Adelaide Darwin

Griffith University

Doctor of Medicine

The Doctor of Medicine (MD) requires applicants to have completed an undergraduate degree before they are eligible to apply for entry.

Sit the GAMSAT and apply through GEMSAS. Be invited to attend a Griffith University Multi Station Admissions Assessment (GUMSAA). Applicants to the MD are encouraged from all degree backgrounds.

SEE FULL ENTRY AND APPLICATION DETAILS HERE

QUICK FACTS

GPA	5.0
Duration	4 years
GAMSAT?	Yes
Interview?	Yes
Closing date	31 May
Locations	Gold Coast Sunshine Coast

Macquarie University

Doctor of Medicine

The Macquarie MD is designed for students with a high level of achievement in tertiary study.

Sit the GAMSAT, apply through GEMSAS, and attend an interview. You must also submit a Personal Statement as part of the application process.

SEE FULL ENTRY AND APPLICATION DETAILS HERE

QUICK FACTS

GPA	5.0
Duration	4 years
GAMSAT?	Yes
Interview?	Yes
Closing date	31 May
Locations	Sydney

University of Melbourne

Doctor of Medicine

Designed for students who have completed their undergraduate studies and are committed to professional training.

Sit the GAMSAT, apply through GEMSAS, and attend an interview. 15 places are reserved for rural students, who do not need to sit the GAMSAT or apply through GEMSAS. Indigenous students also do not need to sit the GAMSAT or apply through GEMSAS.

SEE FULL ENTRY AND APPLICATION DETAILS HERE

QUICK FACTS

GPA	5.0
Duration	4 years
GAMSAT?	Yes
Interview?	Yes
Closing date	31 May
Locations	Melbourne

University of Notre Dame

Doctor of Medicine

The MD at Notre Dame is the only medical degree offered by a Catholic university.

Sit the GAMSAT and Casper, apply through GEMSAS and direct to Notre Dame, and attend an interview if invited. As a guide, students commencing the MD at Notre Dame in 2023 had an average GPA of 6.64 and an average GAMSAT score of 66.

SEE FULL ENTRY AND APPLICATION DETAILS HERE

QUICK FACTS

GPA	5.2
Duration	4 years
GAMSAT?	Yes
Interview?	Yes
Closing date	31 May
Locations	Fremantle

University of Queensland

Doctor of Medicine

The UQ Doctor of Medicine (MD) postgraduate-entry program provides hands-on experience preparing you to work in any global setting.

Sit the GAMSAT, apply through GEMSAS, and attend an interview if invited. You must complete prerequisite tertiary level studies in cell biology and systems physiology.

SEE FULL ENTRY AND APPLICATION DETAILS HERE

QUICK FACTS

GPA	5.0
Duration	4 years
GAMSAT?	Yes
Interview?	Yes
Closing date	31 May
Locations	Brisbane

University of Sydney

Doctor of Medicine

The Doctor of Medicine is suitable for graduates from any discipline who are interested in becoming a doctor and have a passion for healthcare.

Sit the GAMSAT, submit a QAS application through UAC, and apply directly to the University of Sydney.

SEE FULL ENTRY AND APPLICATION DETAILS HERE

QUICK FACTS

GPA	5.0
Duration	4 years
GAMSAT?	Yes
Interview?	No
Closing date	TBC
Locations	Sydney Dubbo

University of Western Australia

Doctor of Medicine

Bachelor degree holders or students who are close to completing their first bachelor's degree may be eligible to apply for graduate entry into the Doctor of Medicine (MD).

Sit the GAMSAT, apply through GEMSAS, and attend an interview if invited.

SEE FULL ENTRY AND APPLICATION DETAILS HERE

QUICK FACTS

GPA	5.5
Duration	4 years
GAMSAT?	Yes
Interview?	Yes
Closing date	31 May
Locations	Perth

University of Wollongong

Doctor of Medicine

UOW offer a four-year program of study and encourage applications from high-performing graduates from a diverse range of backgrounds. No preference is given to any particular undergraduate degree.

Sit the GAMSAT and Casper, apply through GEMSAS, submit an admissions portfolio, and attend an interview if invited.

SEE FULL ENTRY AND APPLICATION DETAILS HERE

QUICK FACTS

GPA	5.5
Duration	4 years
GAMSAT?	Yes
Interview?	Yes
Closing date	31 May
Locations	Wollongong

Deakin University

Doctor of Medicine

This is a four-year graduate entry program for students who have already completed an undergraduate degree.

Sit the GAMSAT, apply through GEMSAS, and attend an interview if invited. Deakin also offers an Indigenous Entry Stream and Rural Training Stream.

SEE FULL ENTRY AND APPLICATION DETAILS HERE

QUICK FACTS

GPA	5.0
Duration	4 years
GAMSAT?	Yes
Interview?	Yes
Closing date	31 May
Locations	Geelong

CONNECTING YOUNG PEOPLE
WITH FUTURES THEY LOVE



studyworkgrow

p. + 617 4039 3862

e. info@studyworkgrow.com

