



VILLANOVA COLLEGE
Developing fine young men

CLEM JONES CENTRE

(SOUTHERN DISTRICTS BASKETBALL)

Covid Site Plan

Drop-Off and Pick-Up Points

- Players, coaches and officials are only permitted to enter the venue. Selected students (for the 1st game) and one parent per player is allowed for the open games only.
- Parents and school buses are to drop off and pick up at the designated areas during the specified times.
- Players are not to arrive more than 15min prior to the start time. At the conclusion of the match all players must vacate the venue immediately via the exit path to the pickup zone

Entry and Exit Paths

- Please observe and obey all entry and exit paths as per map

Site Registration

- All players and coaches must register their attendance at the registration table located at the entrance.

Hygiene

- Utilise the hand sanitiser before, during and after the game. These are located at the many sanitiser stations at the venue
- Shower at home both pre and post-game
- Come to the venue dressed in playing uniform. There will be no access to changerooms. Toilet facilities will be available. Players are not to bring any unnecessary equipment e.g. basketballs

- Follow the displayed signage at the venue and social distance at 1.5m always
- If you are displaying signs and symptoms of feeling unwell **STAY AT HOME** and seek appropriate medical advice
- Those who display symptoms will not be permitted entry

Canteen Facilities

- No canteen facilities are available
- All players, coaches, officials and spectators are required to bring their own water bottles to the venue. 2 full water bottles per player is recommended. Water fountains will be closed.

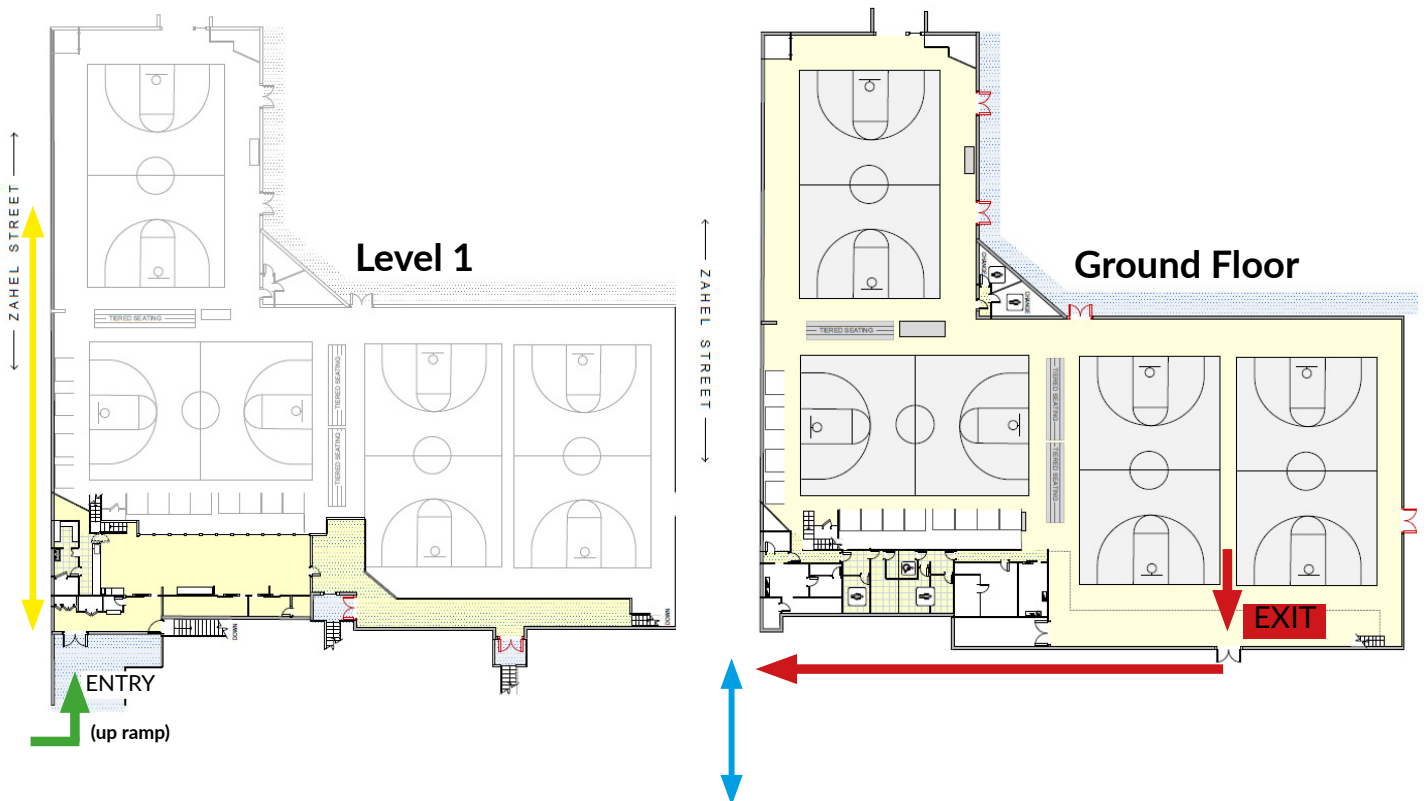
Venues

- Venues will be cleaned before and after each match
- There will be an appointed Covid Officer at each venue

Download the App

- We encourage all members of the community to download the COVID Safe App to assist with contact tracing in the event of a contracted case whilst at any AIC sporting event

Clem Jones Centre
(Southern Districts Basketball Association)
56 Zahel Street, Carina



Legend

ENTRY

Registration and entry

EXIT

Exit point



Entry Path



Exit Path



Drop-off zone



Pick-up zone



GOOLD HALL & OUTDOOR COURT

VILLANOVA COLLEGE
Developing fine young men

Covid Site Plan

Drop Off and Pick Up Points

- Players, coaches and officials are only permitted to enter the venue. Selected students (for the 1st game) and one parent per player is allowed for the open games only
- Parents and school buses are to drop off and pick up at the designated areas during the specified times
- Players are not to arrive more than 15min prior to the start time. At the conclusion of the match all players must vacate the venue immediately via the exit path to the pickup zone

Entry and Exit Paths

- Please observe and obey all entry and exit paths as per map

Site Registration

- All players and adults including coaches, officials, staff, parent spectators (opens only) and first aid officers etc must register their attendance at the registration desk

Hygiene

- Utilise the hand sanitiser before, during and after the game. These are located at the many sanitiser stations at the venue
- Shower at home both pre and post-game
- Come to the venue dressed in playing uniform. There will be no access to changerooms. Toilet facilities will be available.

- Players are not to bring any unnecessary equipment e.g. basketballs
- Follow the displayed signage at the venue and social distance at 1.5m always
- If you are displaying signs and symptoms of feeling unwell STAY AT HOME and seek appropriate medical advice
- Those who display symptoms will not be permitted entry

Canteen Facilities

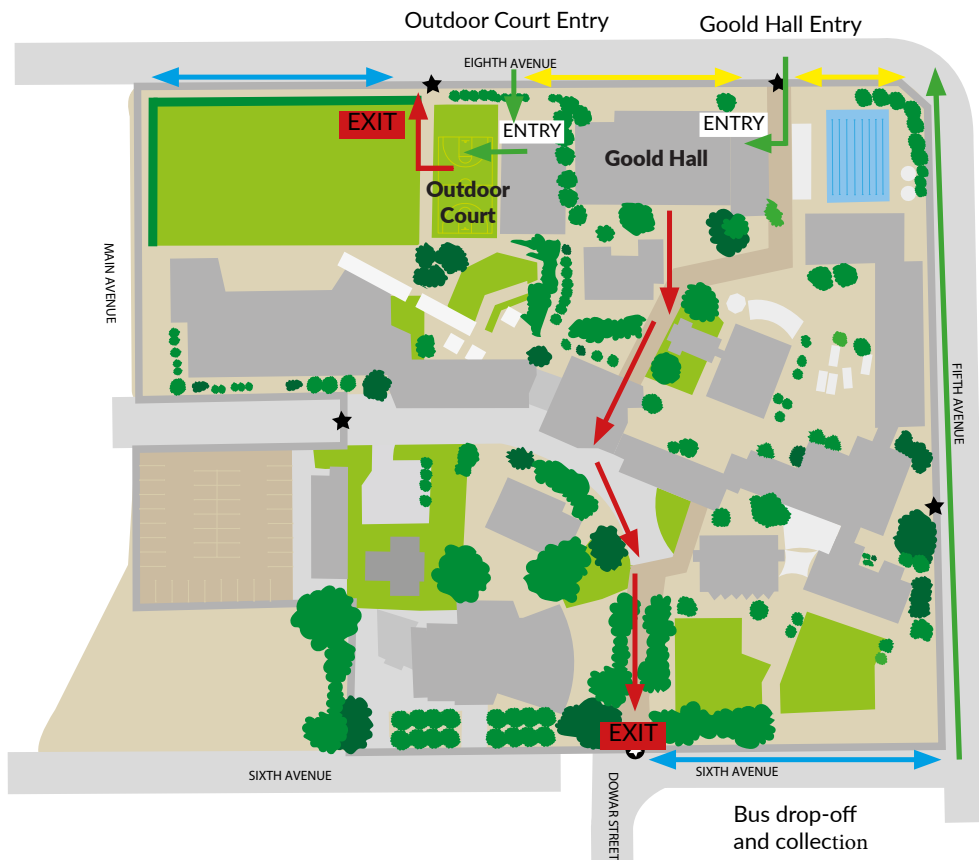
- No canteen facilities are available
- All players, coaches, officials and spectators are required to bring their own water bottles to the venue. Two full water bottles per player is recommended. Water fountains will be closed

Venues

- Venues will be cleaned before and after each match
- There will be an appointed Covid Officer at each venue

Download the App

- We encourage all members of the community to download the COVID Safe App to assist with contact tracing in the event of a contracted case whilst at any AIC sporting event



Legend

ENTRY

Registration and entry

EXIT

Exit point



Entry Path



Exit Path



Drop-off zone



Pick-up zone



VILLANOVA COLLEGE
Developing fine young men

LORETO COLLEGE

(MARY WARD CENTRE)

Covid Site Plan

Drop-Off and Pick-Up Points

- Players, coaches and officials are only permitted to enter the venue. Selected students (for the 1st game) and one parent per player is allowed for the open games only.
- Parents and school buses are to drop off and pick up at the designated areas during the specified times.
- Players are not to arrive more than 15min prior to the start time. At the conclusion of the match all players must vacate the venue immediately via the exit path to the pickup zone

Entry and Exit Paths

- Please observe and obey all entry and exit paths as per map

Site Registration

- All players and adults including coaches, officials, staff, parent spectators (opens only) and first aid officers etc must register their attendance at the registration desk.

Hygiene

- Utilise the hand sanitiser before, during and after the game. These are located at the many sanitiser stations at the venue
- Shower at home both pre and post-game

- Come to the venue dressed in playing uniform. There will be no access to changerooms. Toilet facilities will be available. Players are not to bring any unnecessary equipment e.g. basketballs
- Follow the displayed signage at the venue and social distance at 1.5m always
- If you are displaying signs and symptoms of feeling unwell STAY AT HOME and seek appropriate medical advice
- Those who display symptoms will not be permitted entry

Canteen Facilities

- No canteen facilities are available
- All players, coaches, officials and spectators are required to bring their own water bottles to the venue. 2 full water bottles per player is recommended. Water fountains will be closed.

Venues

- Venues will be cleaned before and after each match
- There will be an appointed Covid Officer at each venue

Download the App

- We encourage all members of the community to download the COVID Safe App to assist with contact tracing in the event of a contracted case whilst at any AIC sporting event

Loreto College
415 Cavendish Road
Coorparoo



Legend

ENTRY

Registration and entry

EXIT

Exit point



Entry Path



Exit Path



Drop-off zone



Pick-up zone



Drop Off and Pick Up Points

- Players, coaches and officials are only permitted to enter the venue. Selected students (for the 1st game) and one parent per player is allowed for the open games only.
- Parents and school buses are to drop off and pick up at the designated areas during the specified times.
- Players are not to arrive more than 15min prior to the start time. At the conclusion of the match all players must vacate the venue immediately via the exit path to the pickup zone

Entry and Exit Paths

- Please observe and obey all entry and exit paths as per map

Site Registration

- All players and adults including coaches, officials, staff, parent spectators (opens only) and first aid officers etc must register their attendance at the registration desk.

Hygiene

- Utilise the hand sanitiser before, during and after the game. These are located at the many sanitiser stations at the venue
- Shower at home both pre and post-game

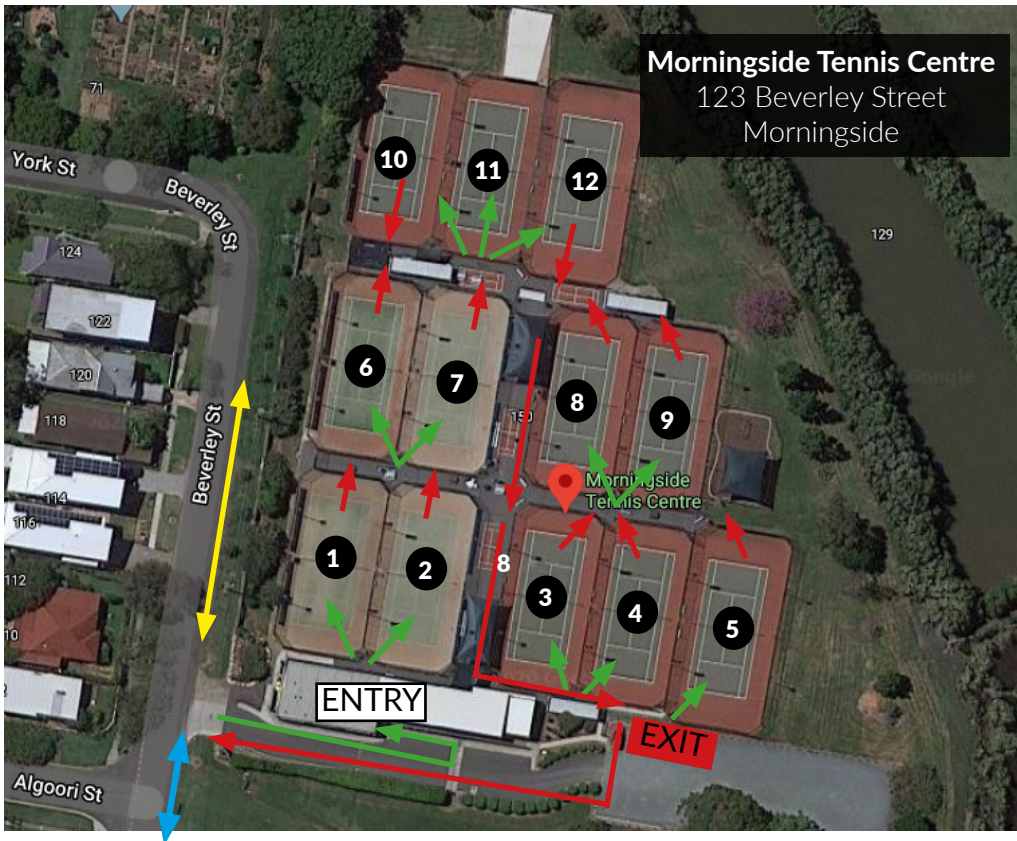
- Come to the venue dressed in playing uniform. There will be no access to changerooms. Toilet facilities will be available. Players are not to bring any unnecessary equipment e.g. basketballs
- Follow the displayed signage at the venue and social distance at 1.5m always
- If you are displaying signs and symptoms of feeling unwell STAY AT HOME and seek appropriate medical advice
- Those who display symptoms will not be permitted entry

Canteen Facilities

- No canteen facilities are available
- All players, coaches, officials and spectators are required to bring their own water bottles to the venue. 2 full water bottles per player is recommended. Water fountains will be closed.

Download the App

- We encourage all members of the community to download the COVID Safe App to assist with contact tracing in the event of a contracted case whilst at any AIC sporting event



Legend

ENTRY

Registration and entry

EXIT

Exit point



Entry Path



Exit Path



Drop-off zone



Pick-up zone