

ANNUAL REPORT

2022



CONTENTS

Principal's Report	3
College Philosophy	5
Governance	6
College Leadership	6
Staff	7
Characteristics of the Student Body	8
NAPLAN Results Analysis 2022	14
VCE Subject Numbers	18
Post School Destinations	20
Finances, Facilities and Resources	23

School Number: 1957



PRINCIPAL'S REPORT



The satisfaction and pride that comes with finishing the year at Good News Lutheran College is a bit like the feeling after you've played your best game on the sports field: exhausting, yet so fulfilling!

After the challenges of the pandemic years, it has been a joy in 2022 to return to relative normality. Nothing

delights me more, as Principal, than to see students engaged in their learning and actively involved in the many programs and activities on offer at the College.

It has been a milestone year in more ways than one.

Good News Lutheran College officially celebrated its Jubilee, marking 25 years since the school first opened its doors on 28 January 1997. With just 26 students on that first day, we have come a long way! What began as a primary school has grown into a thriving Prep – Year 12 College, with more than 1250 students.

Our Jubilee celebrations included a Gala Ball attended by community members past and present and showcasing the incredible talents of student musicians and performers. This wonderful black-tie evening was a chance to acknowledge those who played a major role in the foundation of the College, and those who have supported its growth and success in the decades since.

We also proudly published 'The Good News Story', a history of the College's first 25 years, charting our earliest days right through to today. From the vision of our founders to the hard work of parent volunteers to the tenacity and commitment of founding congregations, The Good News Story is a record of the spirit and determination behind the College's success.

In September we opened the new Junior Years building for students in Years 1 – 4. This wonderful two-storey learning

environment includes 18 classrooms, a 153-seat auditorium, STEM room, digital media room, dedicated home economics kitchen and four wet project rooms.

In December, the College announced that we will be establishing a second campus at Mambourin. This exciting news has been welcomed by families across the region. As a testament to Good News Lutheran College's strong local reputation, initial enrolment numbers for the new Mambourin campus have exceeded all expectations! We are humbled indeed by this level of community and family support for our college and educational ethos.

The inaugural Good News Lutheran College Mambourin students will be Preps and Year 1s. These founding students will learn with a dedicated teaching team at the Tarneit campus in 2023 and 2024, before moving across to the newly constructed Mambourin site in 2025.

At the Tarneit campus, construction of a new Integrated Learning Centre (ILC) is underway and is scheduled to open in 2024. This development will include early learning as well as allied health services and a multi-purpose space for community activities and events. I am proud that a strong focus on sustainable design has been a feature of this project from the outset.

Beyond the continued development of our learning environment, 2022 has been notable for exceptional student experiences, achievements, and highlights. It has been wonderful to see the return of camps and excursion programs. Students enjoyed Araluen Camp in Anglesea, Camp Wilkin, Sovereign Hill Camp, Canberra, and The Summit Camp to name a few, while events such as Harmony Day brought the whole College together in the spirit of unity and diversity.

Students' academic endeavours, achievements and commitment to service have continued to make us proud. I commend our 2022 high achievers, individual subject award

winners and outstanding 2022 College Dux Aastha G and Proxime Accessit, Shaan P.

In the sporting arena, the 2022 House Swimming and Athletics Carnivals were both hugely successful, with several students going on to participate and place at Western Metro Region competitions. We also had teams compete at Western Metro Region level in table tennis, cricket, and basketball.

I extend sincere thanks to the 2022 College Captains, Kathleen M, and Zedriel C and College Vice Captains, Hannah H, and Aaradhana K for their commitment to Good News this year. I also wish to acknowledge the wider Senior Years student leadership team, as well as the Junior and Middle Years Ambassadors, who have acted as role models for their peers throughout the year.

Heartfelt thanks to the exceptional staff. Our professional and dedicated teachers and academic support staff work tirelessly to deliver an outstanding program to students at all levels. I extend particular thanks to Deputy Principal, Mr Richard Baird and warmly farewell outgoing Pastor Peter Janetzki, the first dedicated Pastor to Good News Lutheran College, who has served our community since 2016.

As we conclude the Jubilee year, exciting times are ahead for Good News Lutheran College!

Mrs Fiona McAuliffe
Principal



COLLEGE PHILOSOPHY

The Ministry Team at the College is thrilled to see an increase in student agency in various areas of ministry. One such development is the increase in student run chapels in the Middle and Senior School. This is a significant step towards giving students a sense of ownership and responsibility in shaping their spiritual journey. It allows them to express their faith in creative ways and provides a platform for them to share their testimonies and messages.

We have also noticed an increased interest from students in leadership positions for next year. This is obviously a positive trend, as it demonstrates a desire from the students to serve the community and be actively involved in spiritual growth. To support this, we have introduced new leadership development opportunities in the form of 'worship teams' for certain sub schools. These teams work together to assist and lead worship services and give support to all students.

As we strive to nurture the spiritual growth of our students, we recognise the importance of providing opportunities for them to express their faith through their talents and gifts. We continue to offer places for dance groups to perform to Christian music and in chapels. Additionally, our student run worship band in the Senior School brings modern, uplifting music to our worship services once or twice a term.

As a college, we know the importance of giving the students agency in choosing charities to support. This not only helps to instil a sense of social responsibility but also allows them to create engagement from their peers to support the charity as well.

From a staffing perspective, we continue to run daily staff devotions or prayer groups which helps foster a community that can support each other with God at its centre. We also continue to run the CONNECT program for both teaching and operational staff which helps foster a shared understanding of what is so special about a Lutheran community.

Ultimately, as a college, our goal is to improve staff, student and the wider communities focus on God and his love. Through Restorative Practices, we aim to promote healthy relationships and create a safe and inclusive environment for all members of the community. We recognise that students are at different points in their faith journey, and we strive to meet them where they are. By being intentional in chapel, we hope to guide all students towards a deeper understanding of the Christian faith and provide a foundation for their spiritual growth.

As we move forward, we are excited about the opportunities that lie ahead and look forward to working alongside students to continue to grow our faith as a college community.

College Mission:

Living Christ's Mission, Empowering Inquiring Minds, Preparing Global Citizens

College Values:

Grace, Respect, Integrity, Courage



GOVERNANCE

Good News Lutheran College's Board has responsibility for the overall governance of the College, determines general policy and sets the College's strategic direction.

2022 Board Members

Office Bearers

Mr Russell Wedding (Chairman)
Mr Jerry Gubecka (Vice Chairman)

Board Members

Mr Daniel Verrico
Mr Noel Goltz
Mr Gary Jewson
Ms Marion Nott
Mr Peter Renner
Mr Graeme Simpkin

Consultants

Mrs Fiona McAuliffe (Principal)
Mr Fergus Weber (Business Manager & Company Secretary)
Ps Peter Janetzki (College Pastor)
Mr Julian Denholm (Executive Director, LEVNT)
Ms Tammy Hughes (Director Operations, LEVNT)
Mr Richard Baird (Deputy Principal)
Mrs Christine Taylor (Head of Senior Years)
Mr Steven Tkaczuk (Head of Middle Years)
Mrs Maria Denholm (Head of Junior Years)

COLLEGE LEADERSHIP

The operation of the College, on a day-to-day basis, is the responsibility of the Principal and the Leadership Team.

Principal

Mrs Fiona McAuliffe

Deputy Principal

Mr Richard Baird

Business Manager

Mr Fergus Weber

Head of People and Culture

Ms Melissa Furtado

Head of Senior Years

Mrs Christine Taylor & Mr Rodney Latham (acting)

Head of Middle Years

Mr Steven Tkaczuk

Head of Junior Years

Mrs Maria Denholm

STAFF

Positions of Responsibility

This year, as the renewal period for all Positions of Responsibility (POR) were due, we restructured Positions of Responsibility to better suit the needs of the College. In formalising the proposed structure, we considered strategic intentions, future plans, support for teachers and most importantly to support and improve student outcomes. As

No	POR Positions	No
1	Learning Enrichment Coordinator	1
2	Student Operations Manager	1
3	Primary Years Programme Coordinator	1
4	Middle Years Programme Coordinator	1
5	Victorian Certificate of Education (VCE) Coordinator	1
6	Pathways Coordinator (VET + Careers Coordinator)	1
7	Learning Area Coordinator (Christian Studies)	1
8	Learning Area Coordinator (Health and Physical Education)	1
9	Learning Area Coordinator (LOTE - German)	1
10	Learning Area Coordinator (Maths)	1
11	Learning Area Coordinator (English)	1
12	Learning Area Coordinator (Science)	1
13	Learning Area Coordinator (Humanities)	1
14	Learning Area Coordinator (Technology)	1

a result, a Leadership Selection process was undertaken to identify our top teachers for the new PORs. We also restructured POR positions which include new Assistant Head of Year positions with a view to strengthening our Sub School leadership in 2023.

No	POR Positions	No
15	Learning Area Coordinator (Arts)	1
16	Sports Coordinator (Senior Years)	1
17	Sports Coordinator (Junior Years)	1
18	Digital Learning Leader	1
19	Daily Organiser	1
20	PC Coordinator (Prep - Year 1)	1
21	PC Coordinator (Year 2 - 3)	1
22	PC Coordinator (Year 4 - 5)	1
23	Team Leader (Year 6)	1
24	Team Leader (Year 7)	1
25	Team Leader (Year 8)	1
26	Team Leader (Year 9)	1
27	Team Leader (Year 10)	1
28	Team Leader (Year 11)	1
29	Team Leader (Year 12)	1

Continued Growth and a new Campus

With continued growth, replacement hires and new campus, we welcomed 46 staff this year.

Out of which 30 were teaching staff and 16 were Support staff belonging to the Administration, Teaching Aide, Facilities and Chaplaincy categories.

To ensure that staff are well equipped to complete various aspects of their roles, we dedicate two weeks of Orientation and Professional Development. We also ensure that teaching staff complete their First Aid, Anaphylaxis and Asthma training courses. In addition to this, all staff are also given opportunities to attend ongoing Professional Development throughout the year.

We have also partnered with Educator Impact which enables teachers to seek 360-degree feedback. This includes student feedback to improve teacher practice.

All Good News teachers are appropriately qualified and hold registration with the Victorian Institute of Teaching (VIT).





CHARACTERISTICS OF THE STUDENT BODY

Good News Lutheran College provides education for students from Prep through to Year 12. The student population of 1257 students at the Census in **August of 2022** continued the expected upward trend in enrolments, as the College continues through its largest expected growth phase. The projected enrolment for 2023 is 1387 students across the Tarneit and Mambourin campus.

	Prep	Yr 1	Yr 2	Yr 3	Yr 4	Yr 5	Yr 6	Yr 7	Yr 8	Yr 9	Yr 10	Yr 11	Yr 12	TOTAL	% M/F
Male	51	46	54	48	51	59	55	59	48	53	40	29	34	627	49.88
Female	52	56	50	54	54	47	51	73	55	45	40	27	26	630	50.12
														1257	

At Census in 2022, the composition of the student population was 50.12% female and 49.88% male.

Good News had nil students identifying as indigenous.

Students with educational needs have Individual Learning Plans to help focus learning on their specific needs. Good News also provides additional support for several other students. Students are supported, depending on their level of need, with four tiers of programs:

1. Targeted specific skills instruction supported within the classroom.
2. Modified learning programs within the classroom.
3. Intensive instructional support withdrawn from the classroom in programs such as Early Maths Understanding, Fountas & Pinnell and Reading Recovery.
4. Additional support within the classroom.

Student Attendance

The average student attendance rate in 2022 was 89.65% comparable to the 2021 rate of 95.02%. The average absence rate of 17.92 days per student was higher than the 2021 absence rate of 8.67 days per student.

Management of Non-Attendance

The College takes attendance seriously and in accordance with the College Attendance Policy (20.09.01), non-attendance must be explained by parents. If the parent has not contacted the College to explain the reason for an absence, the College sends an SMS to the parent to let them know of the absence and have them contact the College. Meetings with parents to negotiate ways to minimise the impact on learning and to facilitate a return to school, take place where the absence is prolonged. If a return to school could not be negotiated, a report is to be made to the Department of Early Education and Childhood Development (DEECD). Parents are informed of overall attendance on school reports.

Full Year Attendance Data

School Year	Gender	Indigenous	Num Students	Full Days Present	Full Days Absent	Full Days Absent Unresolved	Full Days Absent Resolved	Full Days Medical	Percent Present	Percent Absent Unresolved	Percent Absent Resolved	Percentage Of Absent Medical
Y00	F	N	54	8431	936	62	874	2	90.01	6.63	93.37	0.16
Y00	M	N	51	7986	1145	99	1044	4	87.46	8.65	91.18	0.35
			105	16417	2081				88.75			
Y01	F	N	57	9269	1046	116	930	4	89.86	11.05	88.9	0.33
Y01	M	N	49	7479	828	45	784	8	90.03	5.37	94.63	0.91
			106	16748	1874				89.94			
Y02	F	N	51	7908	1187	103	1084	4	86.95	8.64	91.32	0.34
Y02	M	N	57	8791	1032	93	938	2	89.5	9.02	90.89	0.19
			108	16699	2219				88.27			
Y03	F	N	56	9210	877	46	832	2	91.31	5.19	94.81	0.23
Y03	M	N	48	7753	827	42	785	2	90.37	5.08	94.92	0.24
			104	16963	1704				90.87			
Y04	F	N	57	8817	1083	57	1025	1	89.06	5.22	94.64	0.05
Y04	M	N	55	8330	1030	71	957	7	89	6.9	92.96	0.68
			112	17147	2113				89.03			
Y05	F	N	51	7993	887	73	812	3	90.02	8.23	91.54	0.28
Y05	M	N	59	9327	1430	75	1356	16	86.71	5.21	94.79	1.08
			110	17320	2317				88.20			
Y06	F	N	52	8605	825	49	776	1	91.25	5.94	94	0.12
Y06	M	N	56	8758	1148	64	1084	8	88.41	5.58	94.42	0.7
			108	17363	1973				89.80			
Y07	F	N	76	12498	1027	66	961	3	92.41	6.43	93.57	0.29
Y07	M	N	63	9805	1107	101	1005	4	89.86	9.13	90.78	0.36
			139	22303	2134				91.27			
Y08	F	N	58	9223	1013	176	837	3	90.1	17.32	82.58	0.3
Y08	M	N	54	7855	951	136	815	2	89.2	14.26	85.74	0.16
			112	17078	1964				89.69			
Y09	F	N	52	7671	731	103	627	7	91.3	14.03	85.76	0.96
Y09	M	N	55	8682	1035	116	918	2	89.35	11.21	88.69	0.19
			107	16353	1766				90.25			
Y10	F	N	41	6380	859	229	630	4	88.14	26.67	73.33	0.47
Y10	M	N	40	6398	601	94	506	3	91.42	15.65	84.26	0.42
			81	12778	1460				89.75			
Y11	F	N	30	4297	590	65	523	4	87.93	11.03	88.72	0.59
Y11	M	N	35	4975	617	92	523	3	88.97	14.91	84.68	0.49
			65	9272	1207				88.48			
Y12	F	N	26	3506	380	136	243	1	90.22	35.66	63.95	0.26
Y12	M	N	35	4683	425	84	338	0	91.69	19.79	79.62	0
			61	8189	805				91.05			

Student Demographics

Good News Lutheran College is in the suburb of Tarneit, within the Wyndham City Council.

The area continues to be one of the fastest growing growth corridors in Australia currently and the College continues to find itself within 5km of a substantial number of new and growing estates. As a provider of Christian education in the Wyndham area, the College has always drawn enrolments from distances that often make walking or riding impractical. The College's growth through into Secondary shows that this remains true with a large proportion of students living within the four surrounding suburbs of Tarneit, Truganina, Hoppers Crossing and Werribee. There are many other students who travel larger distances.

In 2022, the College utilised three buses, one 57-seater, one 41-seater and one 21-seater to transport several students to and from the College daily.

Demographic for 2022			
Suburb	No. of Students	Suburb	No. of Students
Burnside	1	Myrniong	1
Hillside	3	Point Cook	58
Hoppers Crossing	123	Sunshine North	1
Laverton	1	Tarneit	734
Little River	3	Thornhill Park	1
Maddingley	2	Truganina	165
Mambourin	1	Tullamarine	1
Manor Lakes	24	Werribee	85
Melton	3	Williams Landing	69
Moriac	2	Wyndham Vale	37
Mount Cottrell	1	Yarraville	2
		Total Students	1318

Key Student Outcomes

NCCD Data for 2022

PREPS 2022

	Cognitive	Physical	Sensory	Social/Emotional
QDTP	2	5	0	7
Supplementary	4	0	0	5
Substantial	4	0	0	4
Extensive	1	0	0	1
TOTALS	11	5	0	17 (16.50%)

Year 1 2022

	Cognitive	Physical	Sensory	Social/Emotional	TOTALS
QDTP	5	11	0	1	17
Supplementary	7	0	0	0	7
Substantial	0	0	0	0	0
Extensive	0	0	0	0	0
TOTALS	12	11	0	1	24 (23.53%)

Year 2 2022

	Cognitive	Physical	Sensory	Social/Emotional	TOTALS
QDTP	5	8	0	1	14
Supplementary	14	0	0	0	14
Substantial	0	0	0	0	0
Extensive	0	0	0	0	0
TOTALS	19	8	0	1	28 (26.92%)

Year 3 2022

	Cognitive	Physical	Sensory	Social/Emotional	TOTALS
QDTP	0	7	0	2	9
Supplementary	12	1	0	0	13
Substantial	1	0	0	0	1
Extensive	0	0	0	0	0
TOTALS	13	8	0	2	23 (22.55%)

Year 4 2022

	Cognitive	Physical	Sensory	Social/Emotional	TOTALS
QDTP	2	14	0	1	17
Supplementary	5	0	0	2	7
Substantial	1	0	0	0	1
Extensive	0	0	0	0	0
TOTALS	8	14	0	3	25 (23.81%)

Year 5 2022

	Cognitive	Physical	Sensory	Social/Emotional	TOTALS
QDTP	4	8	0	0	12
Supplementary	5	0	0	1	6
Substantial	2	0	0	0	2
Extensive	0	0	0	0	0
TOTALS	11	8	0	1	20 (18.87%)

Year 6 2022

	Cognitive	Physical	Sensory	Social/Emotional	TOTALS
QDTP	3	13	0	0	16
Supplementary	8	0	0	0	8
Substantial	2	0	0	0	2
Extensive	0	0	0	0	0
TOTALS	13	13	0	0	26 (24.53%)

Year 7 2022

	Cognitive	Physical	Sensory	Social/Emotional	TOTALS
QDTP	2	17	0	0	19
Supplementary	1	1	0	1	3
Substantial	0	0	0	0	0
Extensive	0	0	0	0	0
TOTALS	3	18	0	1	22 (16.67%)

Year 8 2022

	Cognitive	Physical	Sensory	Social/Emotional	TOTALS
QDTP	5	7	2	1	15
Supplementary	1	0	0	1	2
Substantial	0	0	0	0	0
Extensive	0	0	0	0	0
TOTALS	6	7	2	2	17 (16.50%)

Year 9 2022

	Cognitive	Physical	Sensory	Social/Emotional	TOTALS
QDTP	4	5	0	1	10
Supplementary	1	2	0	0	3
Substantial	0	0	0	0	0
Extensive	0	0	0	0	0
TOTALS	5	7	0	1	13 (13.27%)

Year 10 2022

	Cognitive	Physical	Sensory	Social/Emotional	TOTALS
QDTP	1	5	0	0	6
Supplementary	1	0	0	0	1
Substantial	0	0	0	0	0
Extensive	0	0	0	0	0
TOTALS	2	5	0	0	7 (8.75%)

Year 11 2022

	Cognitive	Physical	Sensory	Social/Emotional	TOTALS
QDTP	2	6	0	0	8
Supplementary	2	0	0	1	3
Substantial	0	0	0	0	0
Extensive	0	0	0	0	0
TOTALS	4	6	0	1	11 (19.64%)

Year 12 2022

	Cognitive	Physical	Sensory	Social/Emotional	TOTALS
QDTP	1	5	0	2	8
Supplementary	1	0	0	0	1
Substantial	0	0	0	0	0
Extensive	0	0	0	0	0
TOTALS	2	5	0	2	9 (15%)

Primary School 2022

	Cognitive	Physical	Sensory	Social/Emotional	TOTALS
QDTP	21 (2.88%)	66 (9.06%)	0 (0%)	5 (0.68%)	92 (12.64%)
Supplementary	55 (7.55%)	1 (0.13%)	0 (0%)	4 (0.55%)	60 (8.24%)
Substantial	10 (1.37%)	0 (0%)	0 (0%)	0 (0%)	10 (1.37%)
Extensive	1 (0.13%)	0 (0%)	0 (0%)	0 (0%)	1 (0.13%)
TOTALS	87 (11.93%)	67 (9.19%)	0 (0%)	9 (1.23%)	163 (22.38%)

Secondary School 2022

	Cognitive	Physical	Sensory	Social/Emotional	TOTALS
QDTP	15 (2.84%)	45 (8.51%)	2 (0.04%)	4 (0.76%)	66 (12.48%)
Supplementary	7 (1.32%)	3 (0.57%)	0(0%)	3 (0.57%)	13 (2.46%)
Substantial	0 (0%)	0 (0%)	0 (0%)	0 (0%)	0 (0%)
Extensive	0 (0%)	0 (0%)	0 (0%)	0 (0%)	0 (0%)
TOTALS	22 (4.16%)	48 (9.08%)	2 (0.04%)	7 (1.33%)	79 (14.94%)

Total School 2022

	Cognitive	Physical	Sensory	Social/Emotional	TOTALS
QDTP	36 (2.86%)	111 (8.83%)	2 (0.16%)	9 (0.72%)	158 (12.57%)
Supplementary	62 (4.93%)	4 (0.32%)	0 (0%)	7 (0.56%)	73 (5.81%)
Substantial	10 (0.80%)	0 (0%)	0 (0%)	0 (0%)	10 (0.80%)
Extensive	1(0.08%)	0 (0%)	0 (0%)	0 (0%)	1 (0.08%)
TOTALS	109 (8.67%)	115 (9.15%)	2 (0.16%)	16 (1.28%)	242 (19.26%)

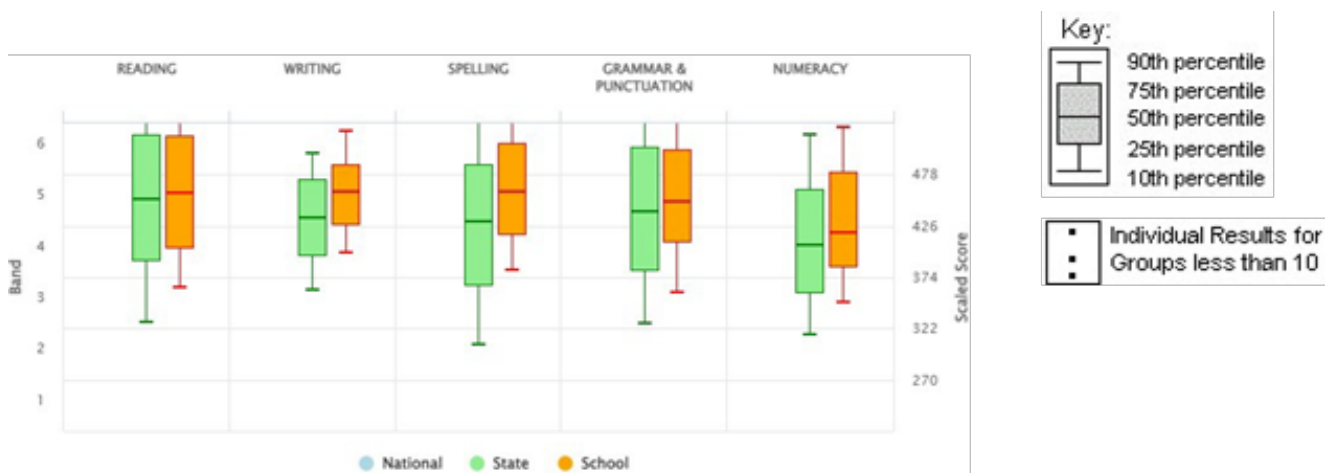


NAPLAN RESULTS ANALYSIS 2022

National Assessment Program - Literacy and Numeracy Tests 2022

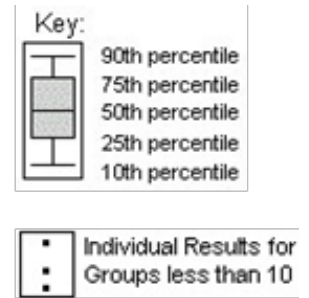
School Summary Report – Year 3

Outcome	Type	Students	10th%	25th%	50th%	75th%	90th%	Median	Mean	se(mean)
Reading	State	74,610	329	391	453	518	576	453	454	
	School	102	363	403	459	516	571	459	461	8
Writing	State	72,007	360	396	434	472	500	431	430	
	School	97	399	427	461	487	521	458	459	5
Spelling	State	73,751	306	366	431	488	539	431	426	
	School	102	381	418	461	509	553	461	461	7
Grammar & Punctuation	State	73,751	327	381	441	505	570	441	446	
	School	102	359	410	451	503	563	451	458	8
Numeracy	State	73,824	316	359	407	462	518	407	413	
	School	102	348	384	420	480	526	420	430	7



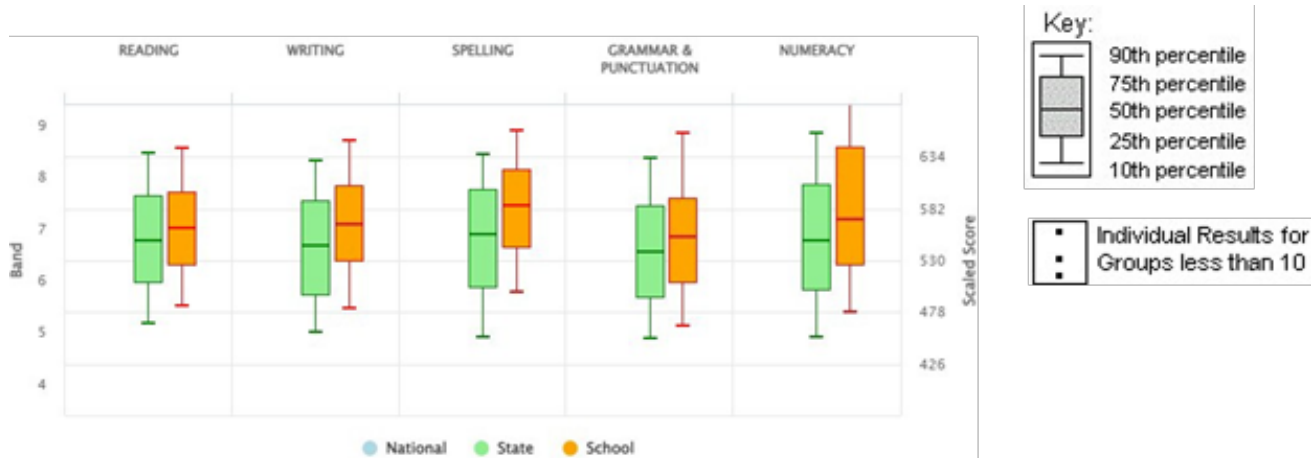
School Summary Report – Year 5

Outcome	Type	Students	10th%	25th%	50th%	75th%	90th%	Median	Mean	se(mean)
Reading	State	73,877	432	476	523	566	604	523	520	
	School	107	439	494	535	577	619	535	534	6
Writing	State	73,125	415	461	497	542	583	497	498	
	School	101	456	483	515	559	595	510	519	6
Spelling	State	72,932	416	464	512	557	598	512	509	
	School	107	454	497	555	585	624	555	541	6
Grammar & Punctuation	State	72,932	418	455	500	550	600	500	506	
	School	107	442	481	528	595	653	527	540	8
Numeracy	State	72,857	415	449	491	539	585	491	496	
	School	107	435	476	523	577	616	523	525	7



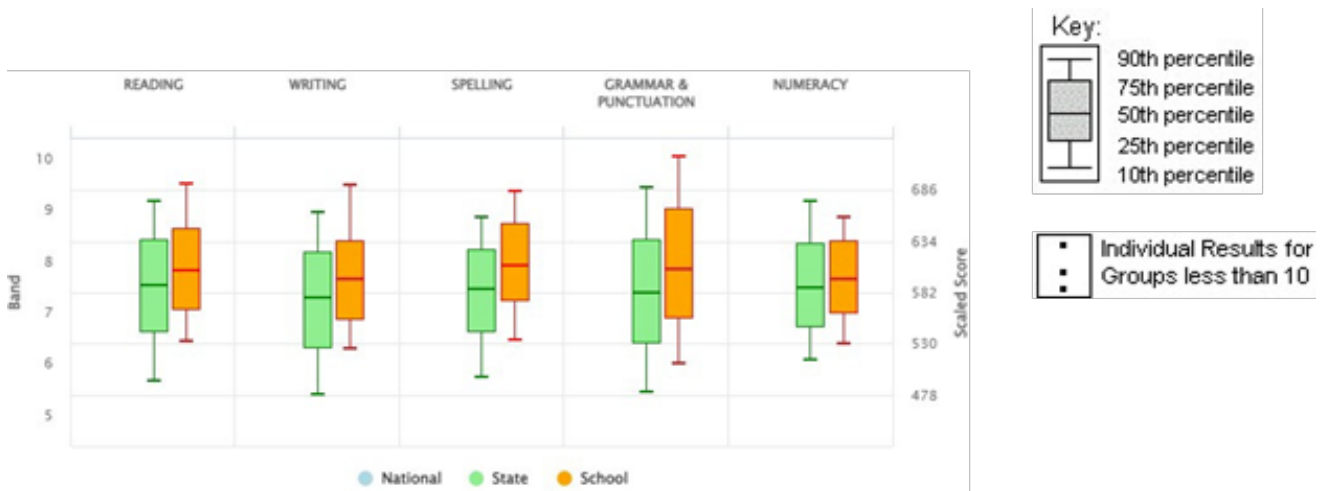
School Summary Report – Year 7

Outcome	Type	Students	10th%	25th%	50th%	75th%	90th%	Median	Mean	se(mean)
Reading	State	72,647	467	508	550	595	637	550	551	
	School	130	484	526	563	599	642	563	564	5
Writing	State	71,947	458	496	545	590	630	547	542	
	School	129	482	529	566	605	650	560	567	5
Spelling	State	70,897	453	502	557	601	636	557	550	
	School	130	499	543	585	622	660	585	582	6
Grammar & Punctuation	State	70,897	451	493	538	585	633	538	540	
	School	130	464	508	554	592	657	554	557	6
Numeracy	State	70,863	452	500	550	606	658	550	554	
	School	125	477	526	572	643	691	573	583	7



School Summary Report – Year 9

Outcome	Type	Students	10th%	25th%	50th%	75th%	90th%	Median	Mean	se(mean)
Reading	State	69,480	492	542	590	635	674	590	586	
	School	99	532	565	605	647	693	604	608	6
Writing	State	68,796	478	527	577	623	663	573	570	
	School	99	524	555	596	634	691	598	598	6
Spelling	State	67,482	496	543	586	625	659	586	580	
	School	99	533	573	610	652	684	610	611	6
Grammar & Punctuation	State	67,482	480	532	582	636	688	582	582	
	School	99	509	556	606	666	720	606	611	8
Numeracy	State	67,703	513	547	587	632	675	587	591	
	School	93	530	561	595	634	658	596	596	6



VCE SUBJECT NUMBERS

	2020	2021	2022
Unit 3-4			
Year 12 Student Total	52	48	59
Accounting	3	4	8
Applied Computing	7	4	4
Biology	9	16	24
Business Management	11	10	37
Chemistry	6	11	19
Classical Studies	N/A	N/A	NA
Dance	N/A	N/A	NA
English	52	48	59
Food Studies	4	7	NA
German	2	5	NA
Health & Human Development	3	N/A	NA
History	12	7	14
Industry and Enterprise	N/A	N/A	NA
Legal Studies	12	15	12
Maths Further	52	36	40
Maths Methods	10	10	14
Media	12	5	NA
Music	N/A	N/A	NA
Philosophy	7	10	NA
Physical Education	7	4	8
Physics	9	4	6
Product Design & Tech (Textiles)	2	N/A	NA
Product Design & Tech (Wood)	11	8	6
Psychology	18	19	11
Religion and Society	N/A	N/A	12
Studio Arts	4	3	8
Systems Engineering	N/A	N/A	NA
Theatre Studies	5	N/A	NA
VET	8	8	8
Visual Communication and Design	6	2	NA
Distance Ed	N/A	N/A	7
Early Start University	1	1	0

	2020	2021	2022
Unit 1-2			
Year 11 Student Total	49	62	56
Accounting	8	21	8
Applied Computing	8	12	17
Biology	18	27	29
Business Management	17	18	12
Chemistry	14	28	18
Classical Studies	N/A	5	NA
Dance	N/A	N/A	NA
Drama	N/A	N/A	NA
English	49	62	56
English - Foundation	N/A	N/A	NA
Food Studies	5	N/A	7
German	5	N/A	3
Health & Human Development	N/A	8	15
History	6	N/A	NA
Industry and Enterprise	N/A	8	15
Legal Studies	18	19	17
Maths Foundation	2	N/A	NA
Maths General	32	34	48
Maths Methods	15	31	17
Maths Specialist	N/A	4	NA
Media	5	N/A	NA
Music	N/A	N/A	NA
Philosophy	7	N/A	8
Physical Education	4	6	10
Physics	7	11	11
Product Design & Tech (Textiles)	N/A	N/A	NA
Product Design & Tech (Wood)	7	11	6
Psychology	17	24	21
Religion and Society	N/A	3	10
Studio Arts	2	N/A	14
Systems Engineering	N/A	5	NA
Theatre Studies	N/A	2	NA
VET	9	13	4
Visual Communication and Design	6	3	NA
Distance Ed	2	3	7



Green indicates an 11-12 class is merged

3-4 Early Start Students	2021	2022
Religion and Society	9	7
Health and Human Development	11	N/A
Physical Education	N/A	N/A
Textiles	2	N/A
Theatre Studies	6	N/A
Visual Communication and Design	N/A	N/A
Food Studies	N/A	3
Studio Art	N/A	1

1-2 Early Start Students	2021	2022
Health and Human Development	N/A	N/A
Religion and Society	7	3
Physical Education	N/A	7
Industry and Enterprise	N/A	7



POST SCHOOL DESTINATIONS

The class of 2022 had a total of 59 students complete their VCE. The destination data saw 43 students apply for a place in an under-graduate degree at university. All students received an offer in the 1st round, with 95% of these students receiving either their 1st or 2nd preference, with an additional 3% of students receiving subsequent offers in the 2nd and 3rd tertiary offer rounds. An additional five students applied for a place in a vocational education course, with all these students receiving an offer.

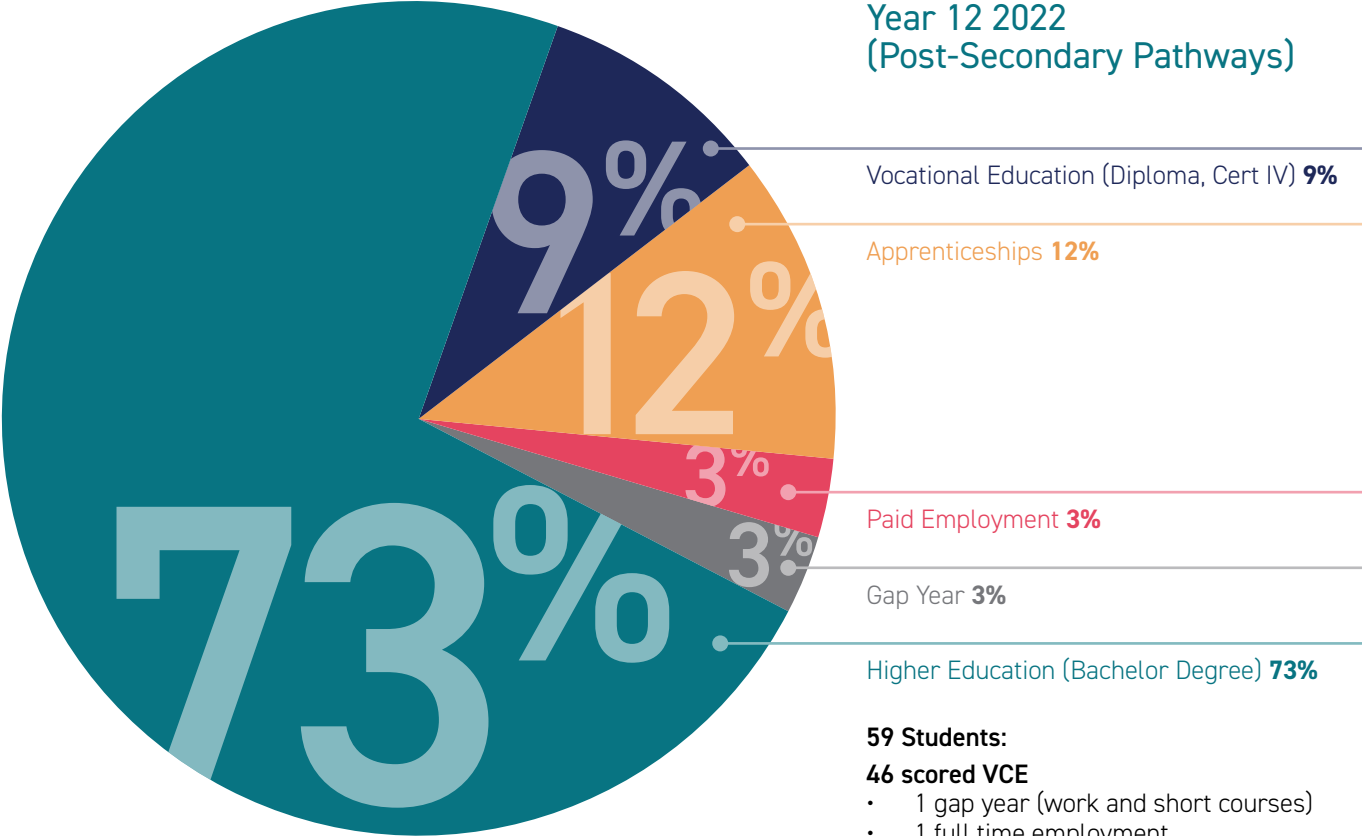
Enrolment statistics supplied as of 30 June indicate 99% of all students are currently enrolled in their chosen studies. The remaining class of 2022 are either gainfully employed in an apprenticeship (seven students) or other full-time employment, with two of these students working during their gap year for 2023.

The study disciplines of the class of 2022 saw 20% accepted into allied and clinical health courses that include Nursing,

Paramedicine and Psychology. Business was equally popular. STEM areas of Science, Engineering, Biomedicine and Pharmacy nearly equalled the two most popular areas with a combined 37% of students entering these study disciplines. The final study destinations included Law and Paralegal (8%) with smaller interests across a wider variety including Arts, Education, Information Technology, Design and Aviation.

The class of 2022 moved slightly from the traditional popular tertiary destination of Victoria University, with RMIT and Deakin University being favoured by over 60% of students. Victoria University however came in 3rd most popular, mainly with students completing a Vocational Education (Diploma) course. It is pleasing to see students research all options for studies and be offered places across all Victorian Tertiary Providers.

Year 12 2022 (Post-Secondary Pathways)



Vocational Education (Diploma, Cert IV) **9%**

Apprenticeships **12%**

Paid Employment **3%**

Gap Year **3%**

Higher Education (Bachelor Degree) **73%**

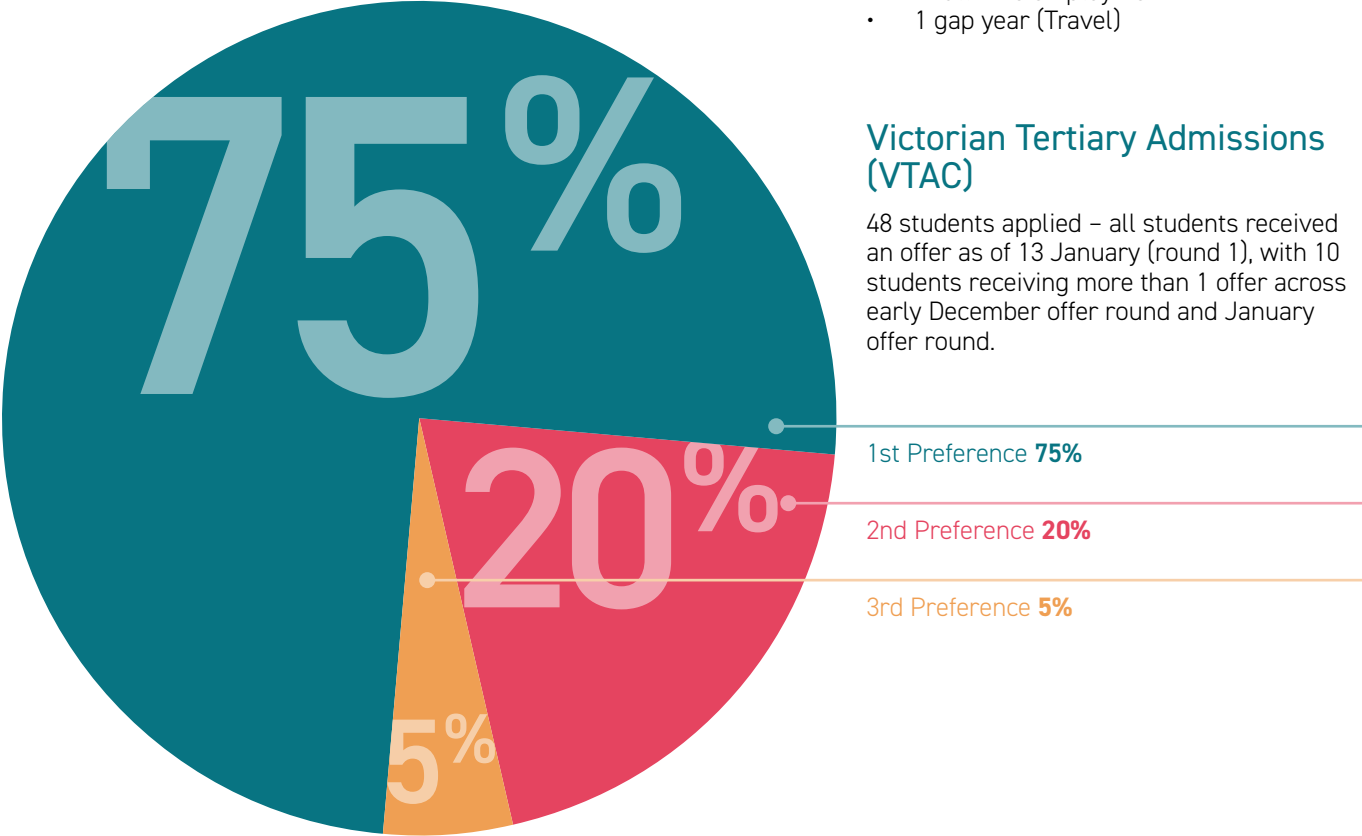
59 Students:

46 scored VCE

- 1 gap year (work and short courses)
- 1 full time employment
- 1 Apprenticeship
- 43 University Studies

13 non-scored VCE

- 6 Apprenticeship
- 5 Vocational Education
- 1 full time employment
- 1 gap year (Travel)



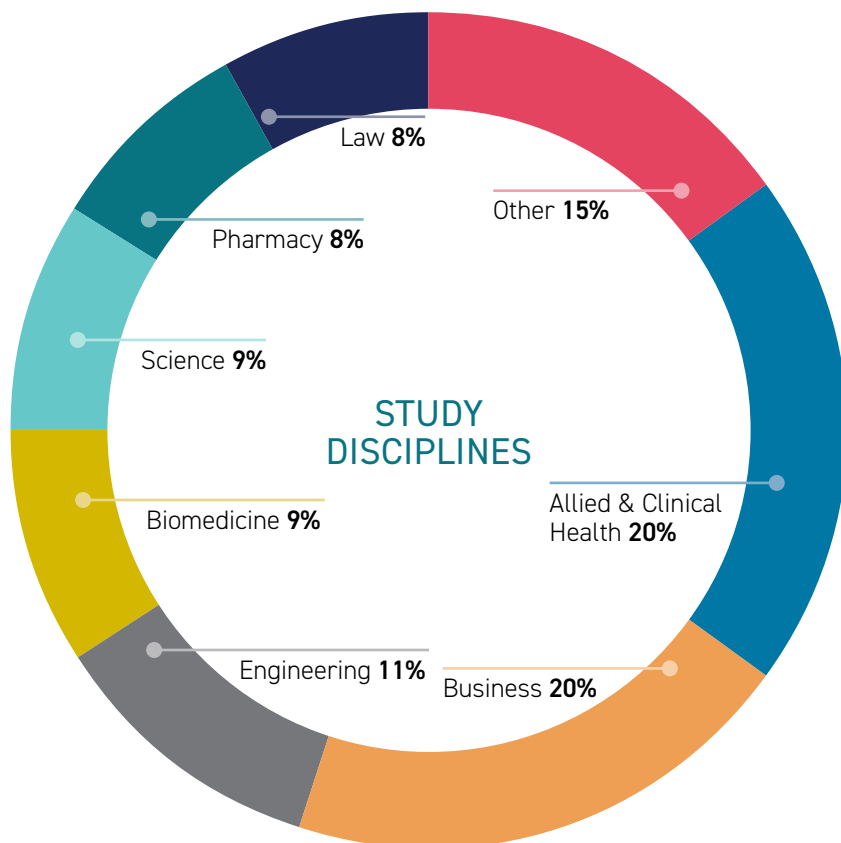
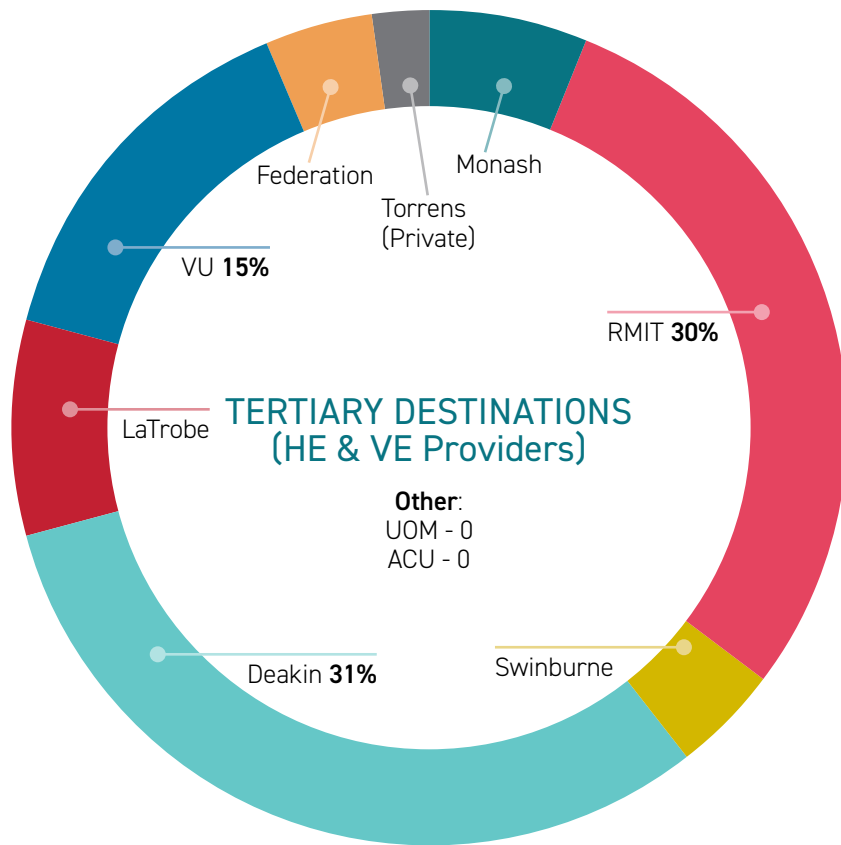
Victorian Tertiary Admissions (VTAC)

48 students applied – all students received an offer as of 13 January (round 1), with 10 students receiving more than 1 offer across early December offer round and January offer round.

1st Preference **75%**

2nd Preference **20%**

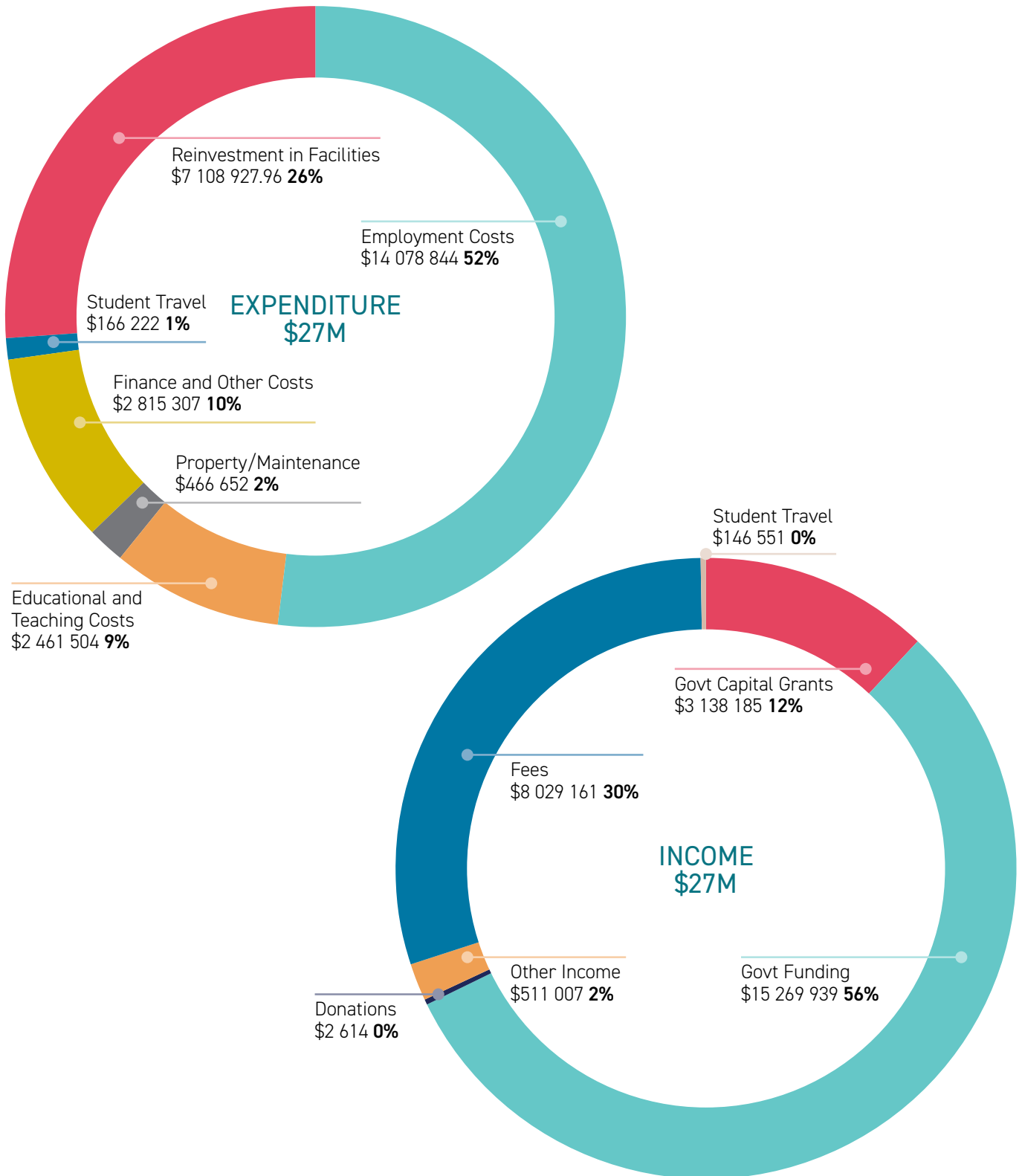
3rd Preference **5%**



FINANCES, FACILITIES AND RESOURCES

The College continues to operate based on a sound financial position and in accordance with the Business Plan adopted by the Board of Directors of the College.

The Business Plan is forecast out to 2032 and is built around the College growing to approximately 2,300 students, spread out over our two campuses in Tarneit and Mambourin by that time.





GOOD NEWS
LUTHERAN COLLEGE