



Year 11 Information Evening

North West Tour
2024 Subject Selections
Certificate III Applications
2024 Scholarships



WESTERN AUSTRALIAN
COLLEGE of AGRICULTURE
Cunderdin

North West Tour

Before we go



Medications and safety plans

All student medications will need to be recorded and packed on Sunday 16th July. Please ensure your child has spares if required and scripts.

Packing and Preparation

We will pack most of the gear on the vehicles on Sunday afternoon at 4pm (16th July). Swag or tent. Single or King Single preferred. Pillow in the bus cabin

Luggage

Please don't bring too much. A limit of one sports bag or small suitcase per person applies. You may also bring a small travel bag for personal items in the bus or to carry on tours.

Departure

Breakfast on Monday 17 July will be at 6.00am. **The bus will depart at 6.45am sharp.**

Residential staff will ensure students are packed the night before, and up and ready to go early Monday.



North West Tour

Packing List



T-shirts (no inappropriate language or images)	Jeans / tracksuit pants (college tracksuit)
Jumpers and Jacket	Shorts
Sleeping Attire	Toiletries & bath towel
Covered shoes / joggers	Underwear & socks
Bathers & beach towel	Thongs (Birkenstocks can get wet on beaches)
Hat / sunglasses	Goggles, snorkel and flippers (can hire in CB)
Spending money	Sunscreen
Torch & batteries	Swag / sleeping bag & pillow
Tent (if you have nominated to bring one)	Snacks for the bus
At least one long sleeved shirt & one pair of pants for mine tour	



Itinerary

Itinerary – North West Tour ~ 17 – 28 July 2023

Monday 17 July 616 kms

6.45am - Depart for Cue
Afternoon - Tour Cue townsite

Overnight: Nallan Station (Near Cue)

Tuesday 18 July 537 kms

7.30am - Depart for Newman via Meekatharra
9.00am – Meekatharra Town Heritage Walk and Look Out Trail
Depart for Newman

Overnight: Yurlu Caravan Park (Newman)

Wednesday 19 July 231 kms

9.15am - Tour of BHP Mount Whaleback Mine in Newman
Required to wear – long pants, long sleeves and closed shoes
Depart for Karijini
Afternoon - Swim at Karijini's Dales Gorge, Fern Pool
5.00pm – Karijini Eco Retreat

Overnight: Karijini Eco Retreat



Itinerary



Thursday 20 July 545 kms

7.30am - Depart for Eighty Mile Beach via Port Hedland
Morning - Tour Port Hedland townsite & visit shops

Overnight: Eighty Mile Beach Caravan Park

Friday 21 July 417 kms

7.30am - Depart for Broome
Afternoon - Swim and watching sunset at Cable Beach
Night - Cultural Experience with Nyamba Buru Yawuru at Camp School

Overnight: Broome Camp School

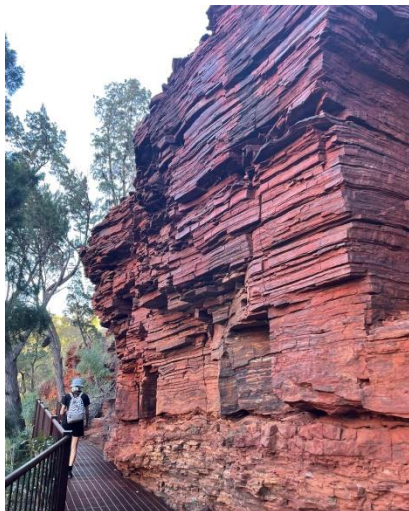
Saturday 22 July

Morning - Broome Markets
1.30pm – Willie Creek Pearl Farm Tour
Night - Movies at Sun Pictures (outdoor Cinema)

Overnight: Broome Camp School



Itinerary



Sunday 23 July

Morning – Free time / swim at Cable Beach
Afternoon – Tour of Broome townsite

Overnight: Broome Camp School

Monday 24 July 879 kms

6.30am - Depart for Dampier
Afternoon – Tour Dampier townsite

Overnight: Dampier Camp School

Tuesday 25 July 533 kms

7.30am - Depart for Coral Bay
Afternoon – Free time to explore and set up camp

Overnight: Ningaloo/Coral - Bayview Caravan Park (Coral Bay)



Itinerary

Wednesday 26 July

Divided into 3 groups for Tours/Snorkelling/Sandboarding
9am – 11.30am – First Coral Bay Eco Tour
12pm – 2.30pm – Second Coral Bay Eco Tour
3pm – 5.30pm – Third Coral Bay Eco Tour

Overnight: Ningaloo/Coral - Bayview Caravan Park (Coral Bay)

Thursday 27 July 693 kms

7.30am – Depart for Nanson via Carnarvon
Morning – Tour Carnarvon townsite

Overnight: Nukara Farm (Nanson, North of Geraldton)

Friday 28 July 512 kms

7.30am - Explore Nukara Farm
4.00pm - Estimated time of arrival in Cunderdin

Drop Off Points:

Moora
Northam (Mobil Truck Stop)
Cunderdin



Questions?



Subject Selections



- Emailed home electronically in Week 10
- Completed by 31st August 2023
- General students can opt to swap Animal PS/Plant PS or remain in their current subject.
- ATAR students remain in all courses.
- Certificate III requires some changes.



Certificate III Application Process

Certificate III Courses offered:

- Advanced Wool Handling
- Pork Production
- Agriculture
- Application and selection process (Early Term 3)



Certificate III Application Process

- Criteria includes:
 - Progress in Certificate II Agriculture in Year 11
 - Year 11 attitude, behaviour and effort
 - Literacy and Numeracy benchmarks (OLNA, English and Maths progress)
 - Attendance
 - Access to off-site industry experience
 - Endorsement from Farm Staff



Certificate III Application Process

Off-site industry experience:

- Pork Production
- Agriculture (Broadacre/Livestock)
- Equivalent of 5 working days of experience/evidence (3rd Party Reports)

(Please Note: this occurs out of school hours, is not Work Place Learning under the school and individuals are encouraged to source their own insurance)

Course Changes:

- Certificate III Advanced Wool Handling- no change required
- Certificate III in Agriculture or Pork Production-must drop 1 trade course or PE (cannot continue with PE Studies).



Certificate III Application Process- Grading

Criteria and scoring points	Very low	Low	Average	High	Very High
	1	2	3	4	5
Organisational skills and be ability to work independently	Few skills and independent abilities demonstrated	Sometimes demonstrates a low-mid level of organisation and autonomy	Sometimes demonstrates a high level of organisation and autonomy	Frequently demonstrates a high level of organisation and autonomy	Consistently demonstrates a high level of organisation and autonomy
Attitude, behaviour and effort indicators on their Year 11 school report	ABE predominately seldom	ABE mostly sometimes and seldom	ABE mostly consistent with few sometimes	ABE mostly consistent and often	ABE predominately consistent
Literacy and Numeracy capabilities	3 outstanding OLNA strands D/E grade in English and Mathematics	2 outstanding OLNA grades D grade in English or Mathematics	1 outstanding OLNA D/C grades in English and Mathematics	All OLNA strands D/C grades in English and Mathematics	All OLNA strands C grades or better in English and Mathematics
Attendance	Less than 70%	70-80%	80-90%	90-95%	Above 95%
Interest in Certificate III study	No interest given	Limited interest	Some interest in some aspects of the certificate	Good level of interest demonstrated	Clear interest in further study
Links to post-school aspirations	No post-school links	Mentions potential job opportunities	Generalised links to post-school aspirations	Range of links to post-school aspirations	Clear and specific links to post-school aspirations
Options for off-site industry placement	Only own farm/workplace listed	1 non-reputable industry listed	1-2 reputable industries listed	3 reputable industries listed	4 + reputable industries listed



Certificate III Application Process- Grading

Criteria and scoring points	Very low	Low	Average	High	Very High
	1	2	3	4	5
Organisational skills and be ability to work independently	Few skills and independent abilities demonstrated	Sometimes demonstrates a low-mid level of organisation and autonomy	Sometimes demonstrates a high level of organisation and autonomy	Frequently demonstrates a high level of organisation and autonomy	Consistently demonstrates a high level of organisation and autonomy
Attitude, behaviour and effort indicators on their Year 11 school report	ABE predominately seldom	ABE mostly sometimes and seldom	ABE mostly consistent with few sometimes	ABE mostly consistent and often	ABE predominately consistent
Progress in their ATAR subjects	Limited progress, D and E grades	Some progress, mostly D grades with some C grades	Good progress mostly C grades	Solid progress B and C grades (no D/E grades)	Excellent progress A and B grades (no D/E grades)
Attendance	Less than 70%	70-80%	80-90%	90-95%	Above 95%
Interest in Certificate III study	No interest given	Limited interest	Some interest in some aspects of the certificate	Good level of interest demonstrated	Clear interest in further study
Links to post-school aspirations	No post-school links	Mentions potential job opportunities	Generalised links to post-school aspirations	Range of links to post-school aspirations	Clear and specific links to post-school aspirations
Options for off-site industry placement	Only own farm/workplace listed	1 non-reputable industry listed	1-2 reputable industries listed	3 reputable industries listed	4 + reputable industries listed



Scholarships

Scholarships Are:

- GRDC Agricultural Training Award Scholarship (4x \$3000)
 - WA Farmers Agricultural Ambassador Scholarship (1 x \$500)
 - Wool Education Trust Scholarship (3 x \$3000)
 - Old Collegians Scholarship (1 x \$500)
 - College Farm Scholarship (1 x \$500)
-
- Applications distributed in Week 10 (GRDC application separate)
 - Written application
 - Applications close Thursday 31st August 4pm
 - Recipients announced at Year 11 Ceremony



GRDC

Criteria and scoring points	Very low	Low	Average	High	Very High
	1	2	3	4	5
Strong record of achievement					
Demonstrated enthusiasm for the agricultural industry					
Understanding of the knowledge and skill that will be required for a successful career in the grain industry					
Demonstrated intent to work in the grains industry					
Referee report 1					
Referee report 2					
Total					
Overall score					



Wool Education Trust

Criteria and scoring points	Very low	Low	Average	High	Very High
	1	2	3	4	5
Strong record of achievement					
Demonstrated interest for the wool industry					
Demonstrated intent to work in the wool industry					
Demonstrated leadership					
Total					
Recipient of other assistance/scholarship?					
Overall score					



All other scholarships

Criteria and scoring points	Very low	Low	Average	High	Very High
	1	2	3	4	5
Strong record of achievement					
Demonstrated interest for the agricultural industry					
Demonstrated intent to work in the agricultural industry					
Demonstrated leadership					
Total					
Recipient of other assistance/scholarships?					
Overall score					



End of Year Sign Off Process

Week 6	Monday	Tuesday	Wednesday	Thursday	Friday
	Regular Timetable	Regular Timetable	Regular Timetable	Regular Timetable	Regular Timetable (until Lunchtime)
	Sign off Sheets provided to students		Final list of students returning Week 7 developed (Student Services)	ATAR Exam 1 9.00-12.10pm	ATAR Exam 2 (Mathematics) 9.00-11.40am
					Early Lunch (12.00pm) Year 11 Awards Ceremony 1.00 – 2.30pm
Bingo/Quiz Night (no prep)		Rewards Activity (after school)	Special Christmas Dinner	Last Day for Year 11's other than those who: <ul style="list-style-type: none"> • Have not completed Class, Farm and Trades Assessments • Are undertaking Harvest UOC's and require extra time • Are Enrolled in Cert III for the following year • ATAR Students Early Close 2.30pm following the Awards Ceremony	



End of Year – Week 7

Week 7	Monday	Tuesday	Wednesday	Thursday	Friday
	Class / Trades / Farm Catch Up	Class / Trades / Farm Catch Up	Class / Trades / Farm Catch Up		
	Extra Harvest Time (Cert II)	Extra Harvest Time (Cert II)	Extra Harvest Time (Cert II)	Extra Harvest Time (Cert II)	Extra Harvest Time (Cert II)
	ATAR Exam 3 9.00-12.10pm	ATAR Exam 4 9.00-12.10pm	Cert III Induction	Cert III Induction	Cert III Induction

