

Braitling OSHC School Holiday Program

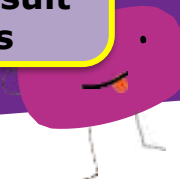
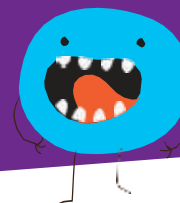
25th September – 29th

September

**ENROLMENTS &
BOOKINGS** after 15th
September will result
in \$20 late fees

For bookings email: braitling.oshc@ynt.org.au

For enrolments visit: oshc.nt.ymca.org.au/family-booking-school



**Monday 25th
September**



Mini Master Chef

Come and try cooking skills. From a range of cooking activities across the day including Cake Pops, tacos, homemade ice cream, and more!

Of course you get to eat and enjoy all the deliciousness you make!

\$74.50 GREEN

**Tuesday 26th
September**



Emergency Services

We will be having the emergency services visit our centres to teach us some of their skills they use to keep everyone safe.

\$74.50 GREEN

**Wednesday 27th
September**



Araluen Park Picnic

Fun filled day of adventures at Araluen Park. Explore the walking tracks, play games in the picnic area, fun on the playground or cooling off in the shade.

please remember Sun Smart Policy that shoulders must be covered, no singlets, please wear a t-shirt underneath

\$80 GREEN

**Thursday 28th
September**



Messy Play Day

Messy play day including a colour run, slime making, tie dye, sensory bins and much more!

Bring any white item/s you choose from home to tie dye (pillowcase, shirt, hat etc)

\$78 AMBER

**Friday 29th
September**



OSHC KRC

Today we will be going to the Kilgariff Recreations Centre to do some rock wall climbing, Bubble soccer, basket ball and badge making

\$85 RED

Y NT Braitling OSHC

Bunny OSHC Coordinator p: 0447 172 857 e: braitling.oshc@ynt.org.au



Braitling OSHC School Holiday Program

2nd October – 6th October

For bookings email: braitling.oshc@ynt.org.au

For enrolments visit: oshc.nt.ymca.org.au/family-before-after-school

ENROLMENTS & BOOKINGS after 15th September will result in \$20 late fees



**Monday 2nd
October**



Water Play Day

-Slippery Slide
-Water Balloons
-Make your own to Boat to race against your friends

Bring a set of wet activity clothes and your towel and as always, remember our Sun Smart Policy!

\$75 GREEN

**Tuesday 3rd
October**



Reptile Centre

We will be having a special visit from the reptile centre here in Alice Springs.

\$80 RED

**Wednesday 4th
October**



GUTS Workshop

We are having the GUTS team visit us to show us some awesome dance moves!

\$74.50 AMBER

**Thursday 5th
October**



Wheels Day

Learning how to be safe on the roads with our very own traffic course.
Bring your wheels and helmet.

\$74.50 AMBER

**Friday 6th
October**



ASP Cinema

As a tradition with every end of school holiday care we will be going to the Alice springs cinema the movie will be chosen closer to the date.

\$74.50 AMBER

**Monday 9th
October**



Messy Day

Spending the day being as creative and as messy as we can with messy play and craft.

This is a Pupil Free day. School will resume in term 4 on Tuesday 10/10/23

\$74.50 AMBER

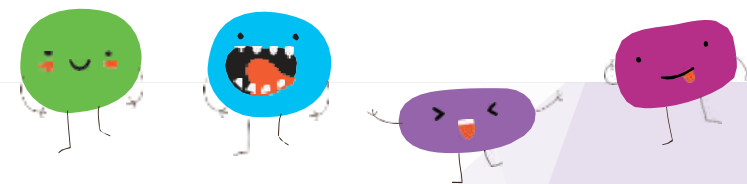
Y NT Braitling OSHC

Bunny OSHC Coordinator p: 0447 172 857 e: braitling.oshc@ynt.org.au



PARENT INFORMATION & BOOKING

OSHC will be opened: 7:30am – 6:00pm Monday – Friday. Please be sure to Sign your Children in and Out.



How to book

1. If you are an existing Family at our OSHC service, please book sessions using XPLOR, or by email. This will mean you are already enrolled, and no new enrolment is required.

2. For New Families that wish to Enrol:

<https://oshc.nt.ymca.org.au/enrolment/>

Please note that if you have not yet applied for CCS with MyGov, that this can be a 4 week process and it is recommending you apply early. CCS rules apply. CCS not applicable for absent days at the beginning and end of care.

3. Submit your completed excursion permission forms via one of the following options:

• Email: rosebery.oshc@ynt.org.au

• Hand into the center.

Enrolments window ends Friday of week 8. So please be quick to secure your child's place. Late and extra bookings will only be accepted if there are available spaces. Excursions are capped due to travel limited availability; please ensure you are quick to avoid disappointment. Late enrolments will incur a \$20 late fee administration charge.

Fees

- From \$74.50 a day as base rate
- Incursion and excursion fees are dependent on the activities and will be advertised for each vacation care period
- Late pick up fees is \$15 per 15-minute increments
- Commonwealth Child Care Subsidy (CCS) is available to eligible families.
- YMCA have partnered with Debit Success for all fee payments. Families must complete a direct debit form to attend the service or have their billing details updated in the Xplor app once they have successfully enrolled. Fees will be deducted from the nominated account. All booked days will be charged the advertised fee. All absent days will be charged. For existing or returning families if you have not attended the service for more than 3 months please check your billing details are still correct by logging into your Xplor app and checking under Accounts > Finance.
- All School Holiday Care fees must be paid in full before care can be provided.

Clothing and Footwear

- Please send children in clothes appropriate for the activity they will be participating in.
- Children will be required to wear sun-smart hats every day.
- Please ensure adequate footwear each day. **No bare feet or thongs.**

Food and Drinks

Please provide a healthy packed lunch, snacks and drink bottle every day. Please provide enough food for the entire school day.

Morning and Afternoon tea will be provided.

No spending money is permitted

Medical Conditions

- Please provide all necessary medications, asthma inhalers, spacers, Epipens/ Anapens, etc. Speak to educators and complete necessary paperwork on arrival.
- Medical action plans and risk minimisation plans must be completed and submitted with enrolment forms.
- Individual Anaphylaxis Medical Action Plans will be displayed where all staff can readily access them.
- All families to be aware that children at risk of anaphylaxis will be attending the vacation care program. Please be aware of the various allergies that children suffer from, for example: peanuts, tree nuts, eggs, sesame seeds
- A risk minimization plan is required to be developed for all children who have been diagnosed with anaphylaxis, asthma, diabetes or any other medical condition in consultation with educators on enrolment.

Excursions

Children must be at the venue by 9am on excursion days.

Electronic Devices

Hand held and all electronic devices i.e. iPads, phones, iPods, PS2 etc. are not permitted at the centre. If a child brings an electronic toy or mobile device, staff will keep this in a safe place until families arrive.

Behaviour Management Policy

YMCA has the right to remove or refuse further participation of any child whose behaviour is deemed to be inappropriate. Bullying, bad language and harassment of other children and educators will not be tolerated under any circumstances.

Children with additional needs

In accordance with the application for enrolment procedure we may be able to provide additional educator support to include children with additional needs and children from culturally and linguistically diverse backgrounds.

Prior to booking, please discuss your specific circumstances with the service coordinator.

Traffic Light System

Here at YMCA we understand that we cater for and support many families of children with additional needs and or sensory processing needs. We acknowledge that many of these can vary from child to child, some are diagnosed and others are not, this may also include anxiety.

To help families in deciding what activities are suitable for each individual child and their needs we have created the Traffic Light System.

The Traffic Light System is exactly as it sounds, a variation of coloured dots indicating what level of sensory difficulties that may be encountered in each programmed activity.

RED: indicating that throughout the activity a large amount of sensory difficulties may be encountered. Parents may decide at their own discretion upon consultation with the coordinator, if their child will be able to participate comfortably. Children attending on these days will require an Inclusion Support Plan.

AMBER: Indicating that there is a medium level of sensory difficulties that may be encountered, parents may decide at their own discretion upon consultation with the coordinator, if their child will be able to participate comfortably. Children attending on these days will require an Inclusion Support Plan.

GREEN: Indicating that this activity will be a wonderful opportunity for your child to participate comfortably.

At the Y, we are committed to empowering all Children and Young People to feel safe and be safe, at the Y, in their families and in their communities. As such, we ensure that all of our candidates are appropriately screened (including police checks) to make sure that the right people are in the right roles.

To learn more about our screening processes, click here to view our Safeguarding Children and Young People Policy: <https://ymca.org.au/about-us/safeguarding-children-young-people/safeguardingresources/>

